

# BIKEDANE

June 17<sup>th</sup>, 2019



Capital City Trail Pavement Restoration  
August 2018



# Welcome and Introductions

## Dane County Executive

### Joe Parisi



# BIKEDANE 2019

## OVERVIEW

- Welcome by County Executive Joe Parisi
- Current Dane County Bicycle Project Updates
- 2018 PARC and Ride Grant Project Overview
- Flood Repair Grant Opportunities
- Trail Steward and Volunteer Opportunities
- Questions



# Current Dane County Parks Bicycle Project Updates

- Phase 2 Lower Yahara River Trail
- North Mendota Trail
- Glacial Drumlin-CCT Connection
- Walking Iron Trail
- Capital City Trail Pavement Restoration
- Dane County Highway Bicycle Projects

# Lower Yahara River Trail

## Phase 2-Fish Camp to Williams Drive

Planning/Design/Engineering

Planning Process Estimated Completion

Construction

Commence Summer 2019

Fall 2020

2021?



# Lower Yahara River Trail Phase 2: Fish Camp County Park to Lake Kegonsa State Park Segment



**EXHIBIT B: PROJECT AREA**



**Legend**

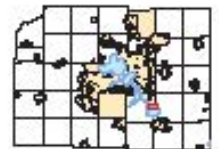
- County Wildlife Land
- County Park Land
- County Resource Area

- Proposed Lower Yahara Trail: Phase 2
- Lower Yahara River Trail: Future Phase
- Proposed Bike/Pedestrian Bridge

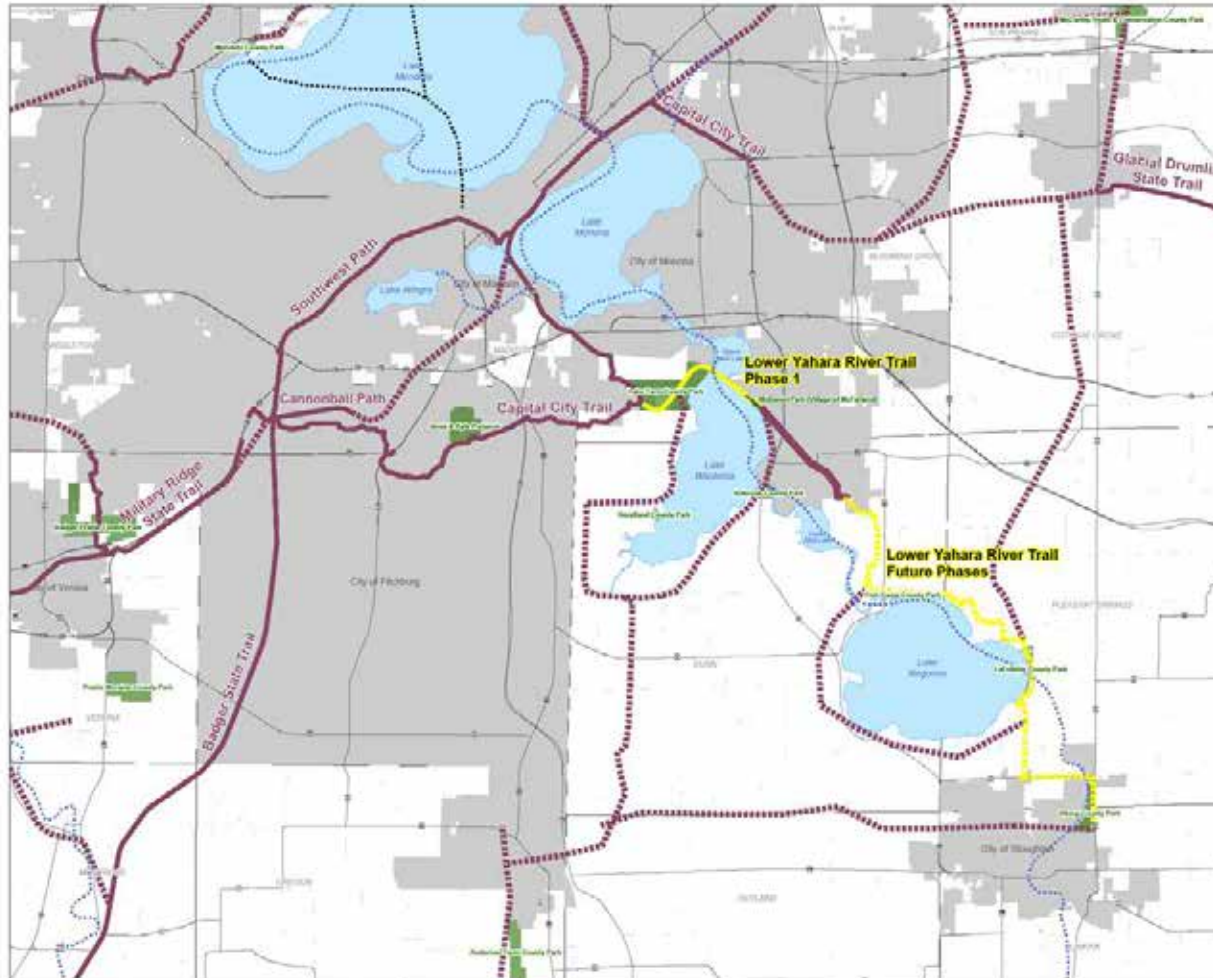
Scale: 1" = 300'-0"



Map Revised: March 3, 2019



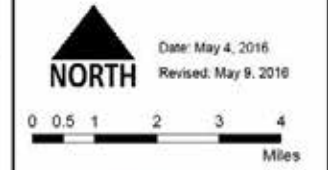
# Future Phases Lower Yahara River Trail



## LOWER YAHARA RIVER TRAIL

Regional Connections

- Legend**
- Lower Yahara River Trail Phase 1
  - Lower Yahara River Trail Future Phases
  - Existing Off-road Bicycle/Pedestrian Trails
  - Proposed Dane County Parks and Open Space Plan Off-road Bicycle/Pedestrian Trails
  - Water Trail
  - Proposed Bicycle/Pedestrian Ferry
  - County Recreation Park
  - City/Village
  - Major Lake
  - Township Boundary



# North Mendota Trail

- Design & engineering plans are underway for new trail segment between Woodland Drive and Governor Nelson State Park.
- Project will include a bicycle/pedestrian bridge across Six Mile Creek.
- Town of Westport is the project manager with financial assistance from the County.
- Final plans, permits anticipated to be completed this year.
- Construction pending funding.





# North Mendota Trail



**Dane County  
5-Year Major Regional  
Bicycle/Pedestrian  
Trail Improvements**

**North Mendota Trail**

- Phase 1 - COMPLETED**
- Phase 2 - CTH M to North Mendota Wildlife Area**
  - Project Responsibility: TWall Investments
  - Estimated Timeline: 2019 Completion
- Phase 3 - Woodland Drive to CTH M**
  - Project Responsibility: Westport/Waunakee
  - Estimated Timeline: 2018-19
  - Environmental/PSE/Permits
  - Construction
- Phase 4 - North Mendota Wildlife Area to Fox Bluff Road**
  - Project Responsibility: Dane County
  - Estimated Timeline: 2021?
  - Environmental/PSE/Permits
  - Construction
- Future Phase to Mendota Co. Park**

**Notes:**

- Westport/Waunakee completed preliminary P/S/E in 2017 with County financial support.
- Potential future PARC and Ride project.

0 01 02 04 08 08 Miles

**Dane County Parks**  
Always in Season

**Dane County**

Date Saved: 26/11/2018  
H:\ParkMapping\Trail\and\YearPlan\NT Phases.mxd

# Capital City Trail to Glacial Drumlin State Trail

- November 2017 Planning Kick Off Meeting
- November 2017 Planning Team Site Tour
  - Non-resolvable Design Constraints Identified at Two Locations
- December 2017 Dane County Closed Project Agreement with WisDOT

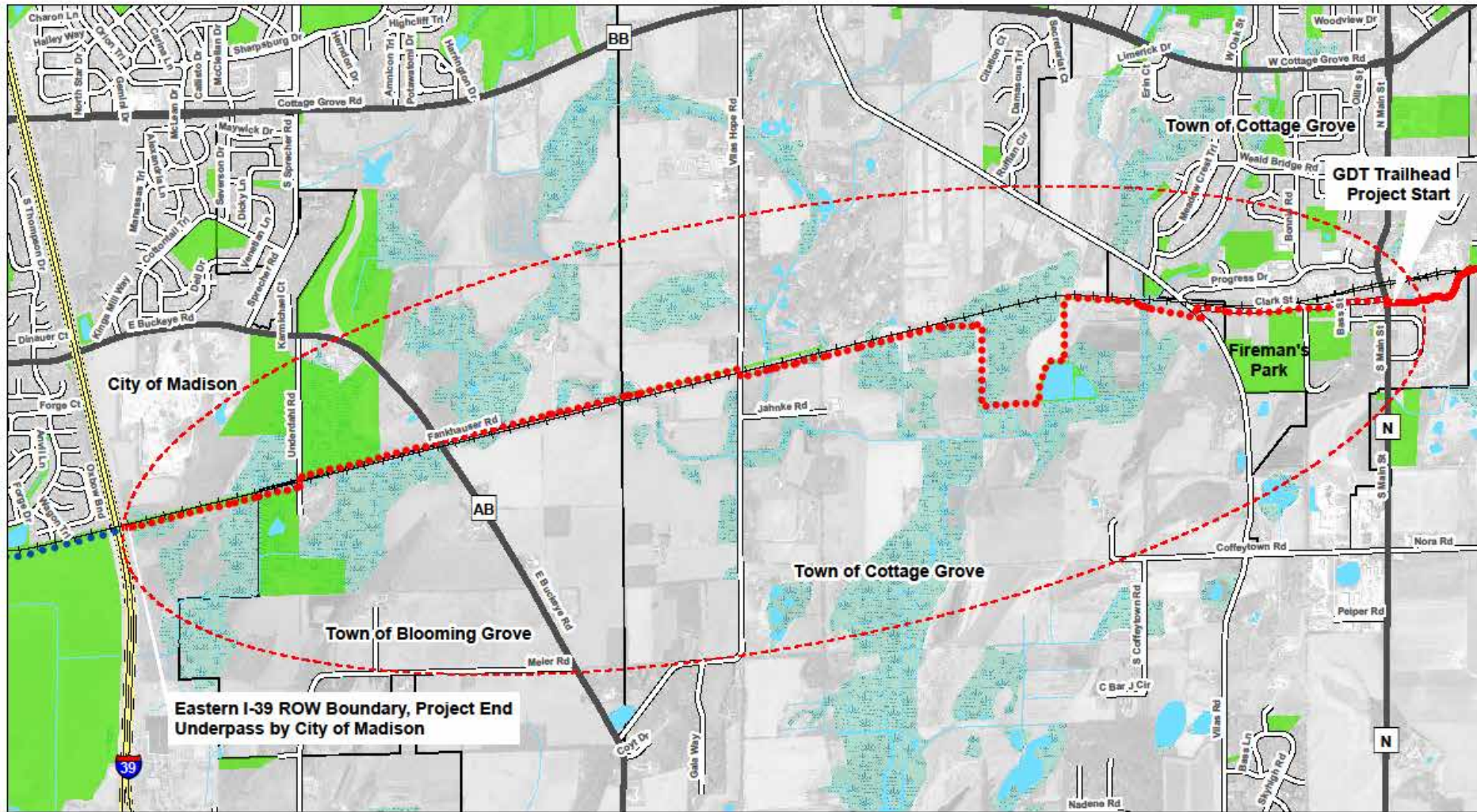


# Capital City Trail to Glacial Drumlin State Trail

- Jan-Feb 2018 Revise Project Scope and Approach  
-Interstate to Buckeye Road
- Mar-Apr 2018 Amend Consultant Contract
- April 2018-CORRE Began Planning Process
- 2019-20 Acquire Addition Land Buckeye to Vilas
- July 2020-Final PSE Interstate to Buckeye
- 2021 Construction to Buckeye Road



# Glacial Drumlin Trail Appendix A: Project Area Overview Map



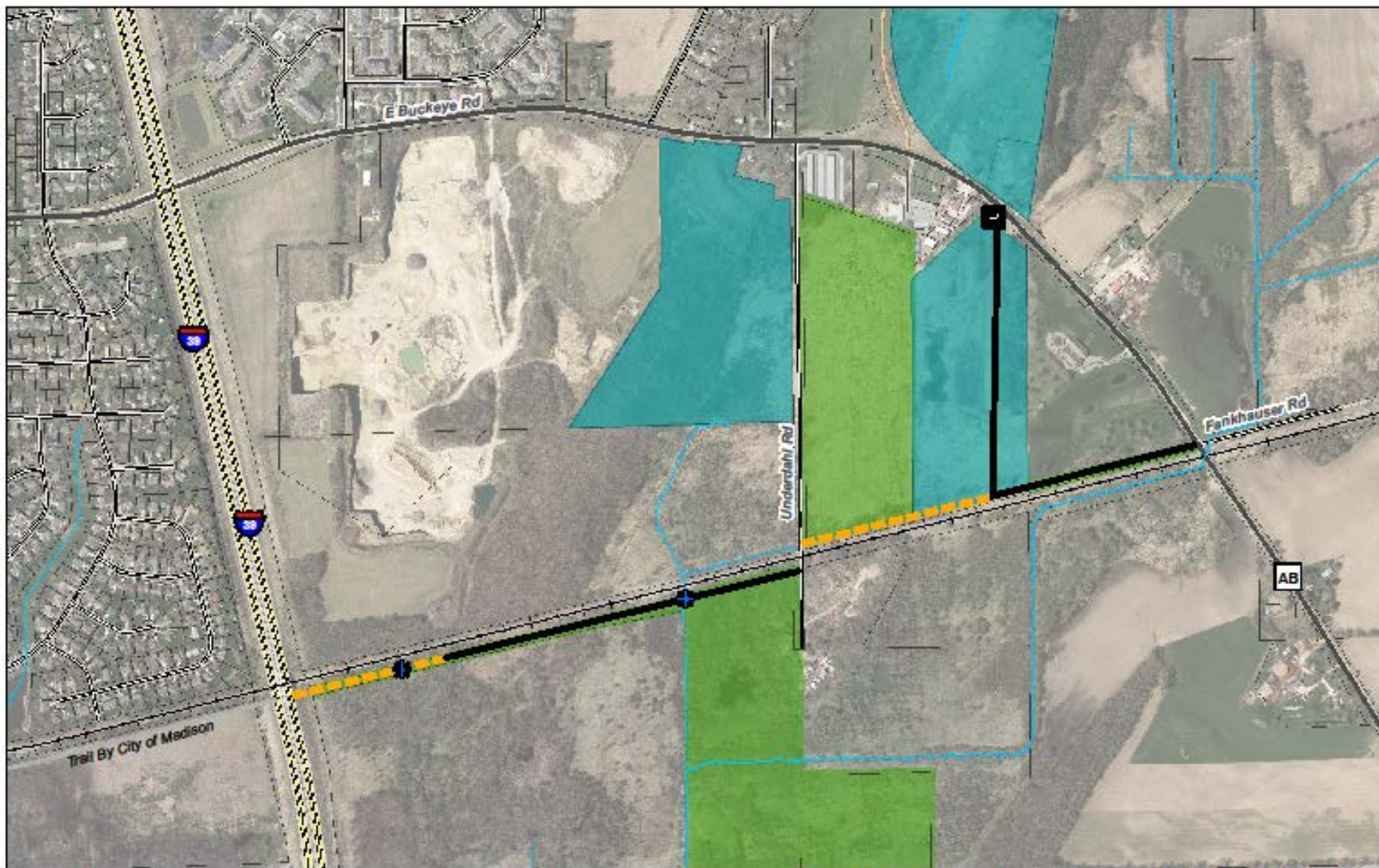
Map created: 11/16/2015  
 Map edited: 5/16/2016  
 Not to Scale

## Legend

- ..... Proposed Trail Alignment; Exact alignment to be determined
- ..... Connector trail by City of Madison
- Existing Glacial Drumlin Trail



EXHIBIT 1



H:\Parks\Mapping\Trails\Land\GDTtoCCT\Maps\GDT\_AlignmentOverview\_Phase 1.mxd



# Glacial Drumlin Trail

## Phase One Alignment

03/22/2018

**Legend**

Proposed Boardwalk

Proposed At-Grade Trail

Proposed Parking Lot

Water Crossing

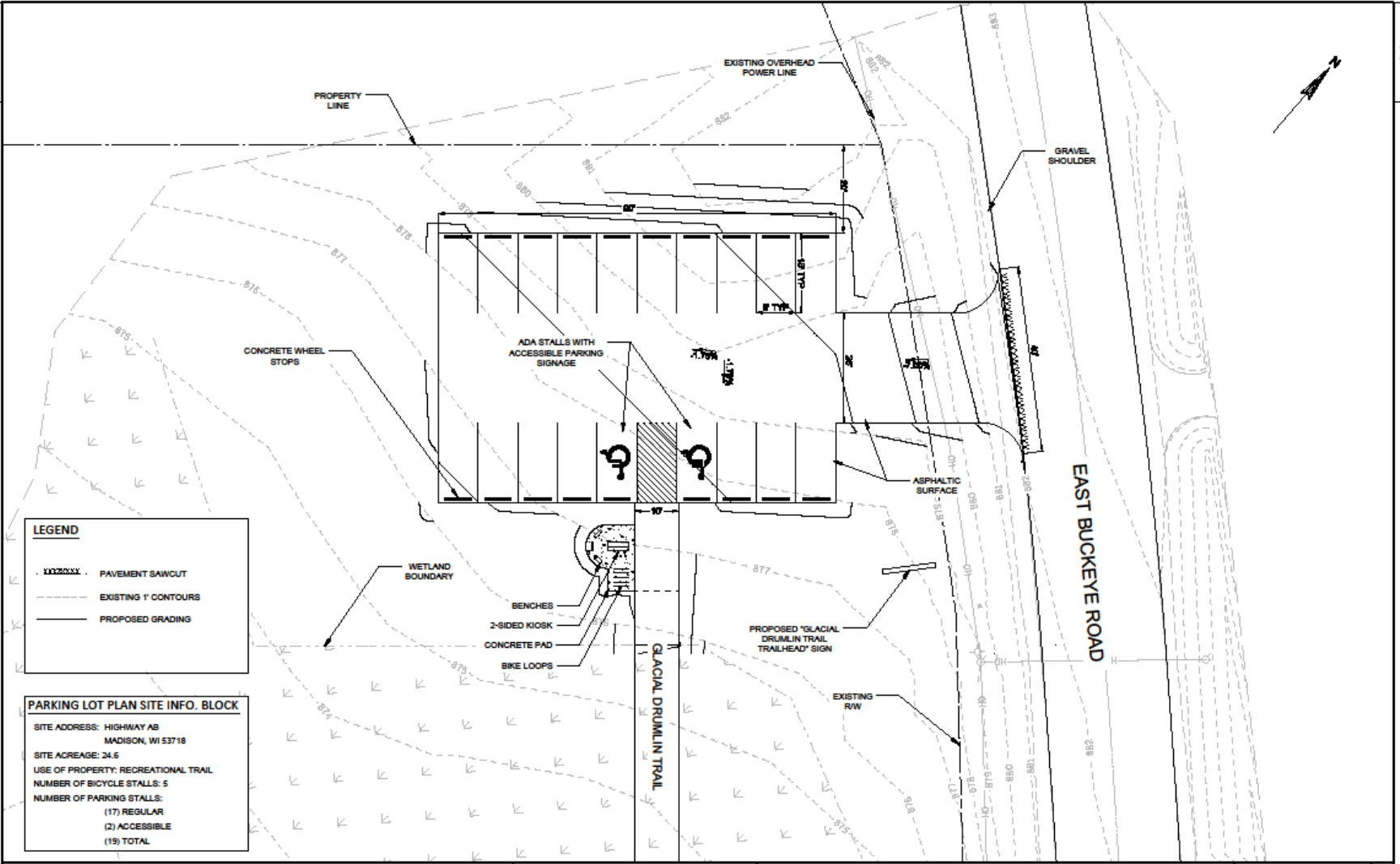
Dane Co. Lands

DNR Lands/Easements

Railroad



0 250 500 Feet



**LEGEND**

- - - - - PAVEMENT SAWCUT
- - - - - EXISTING 1" CONTOURS
- — — — PROPOSED GRADING

**PARKING LOT PLAN SITE INFO. BLOCK**

SITE ADDRESS: HIGHWAY AB  
MADISON, WI 53718

SITE ACREAGE: 24.6

USE OF PROPERTY: RECREATIONAL TRAIL

NUMBER OF BICYCLE STALLS: 5

NUMBER OF PARKING STALLS:

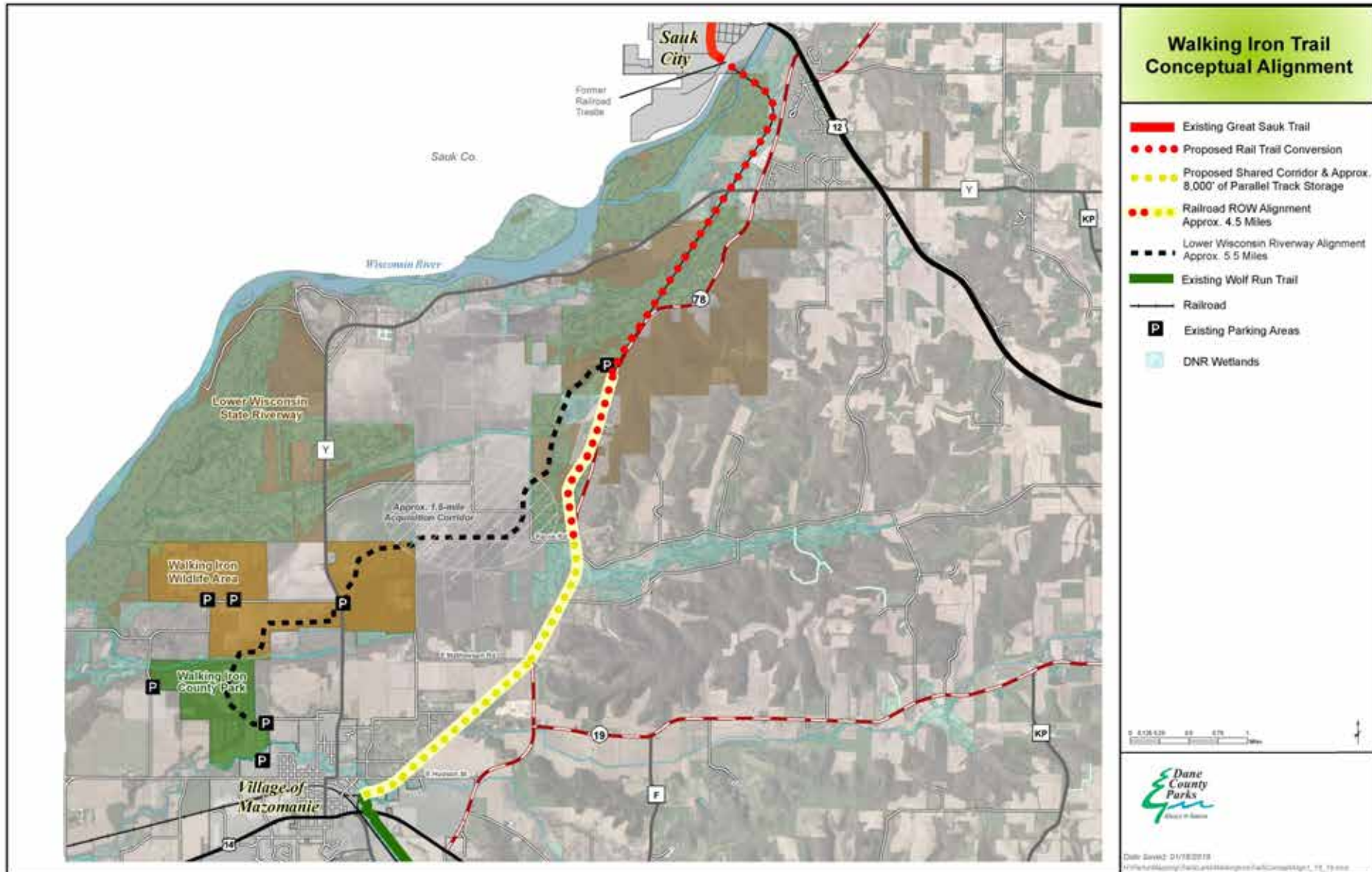
- (17) REGULAR
- (2) ACCESSIBLE
- (19) TOTAL

# Walking Iron (State) Trail

- Trail concept to connect Village of Mazomanie with Sauk City per Wisconsin State Trail Plan and Dane County Parks and Open Space Plan.
- Utilize existing rail corridor, combination of rail to trail conversion northern half and shared corridor southern half.
- Includes feasibility study joint planning venture with Sauk County for a multi use recreation bridge crossing of the Wisconsin River.
- Construction pending funding.

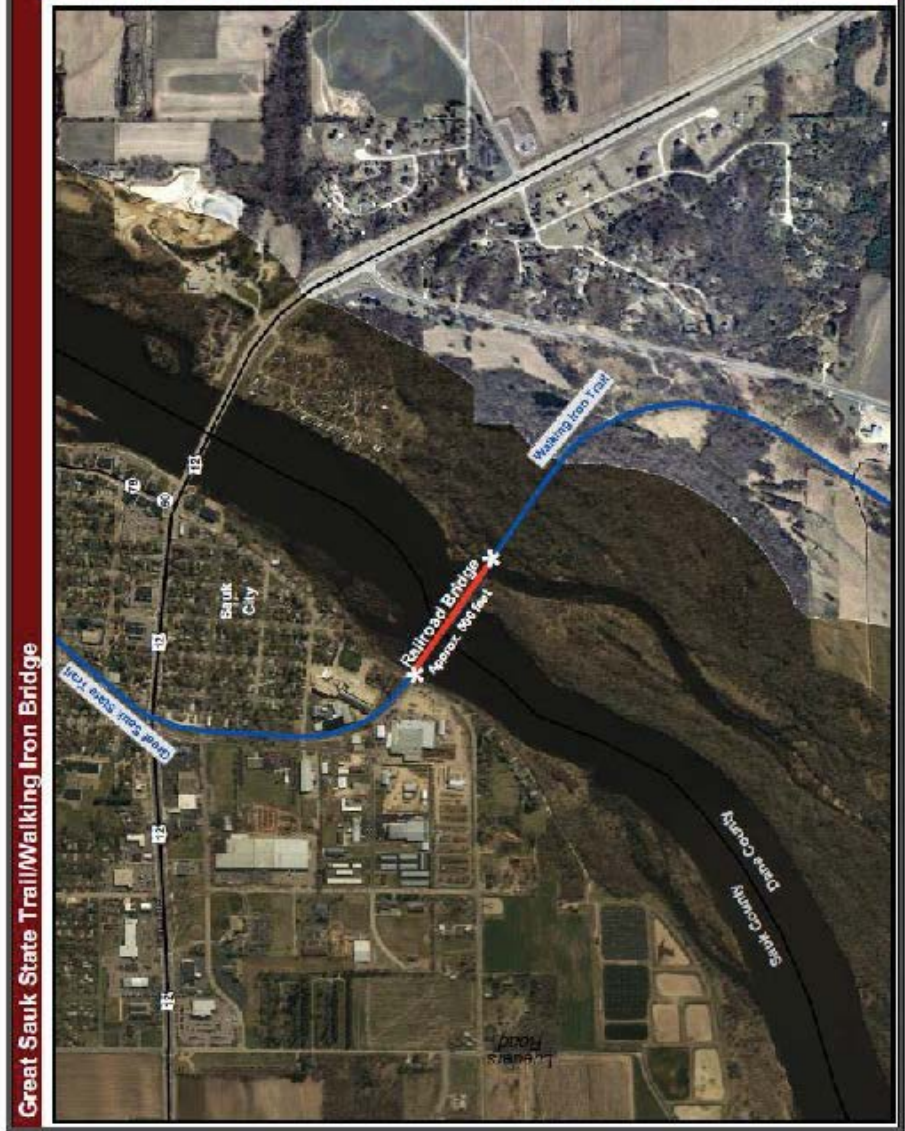


# Walking Iron (State) Trail





PEDESTRIAN/BICYCLE/SNOWMOBILE BRIDGE STUDY AND PLANS



Great Sauk State Trail/Walking Iron Bridge

# Capital City Trail Pavement Restoration

PHASE 1- 2018, Complete

- Total Cost Approx. \$1 M, \$750K County, \$250K DNR

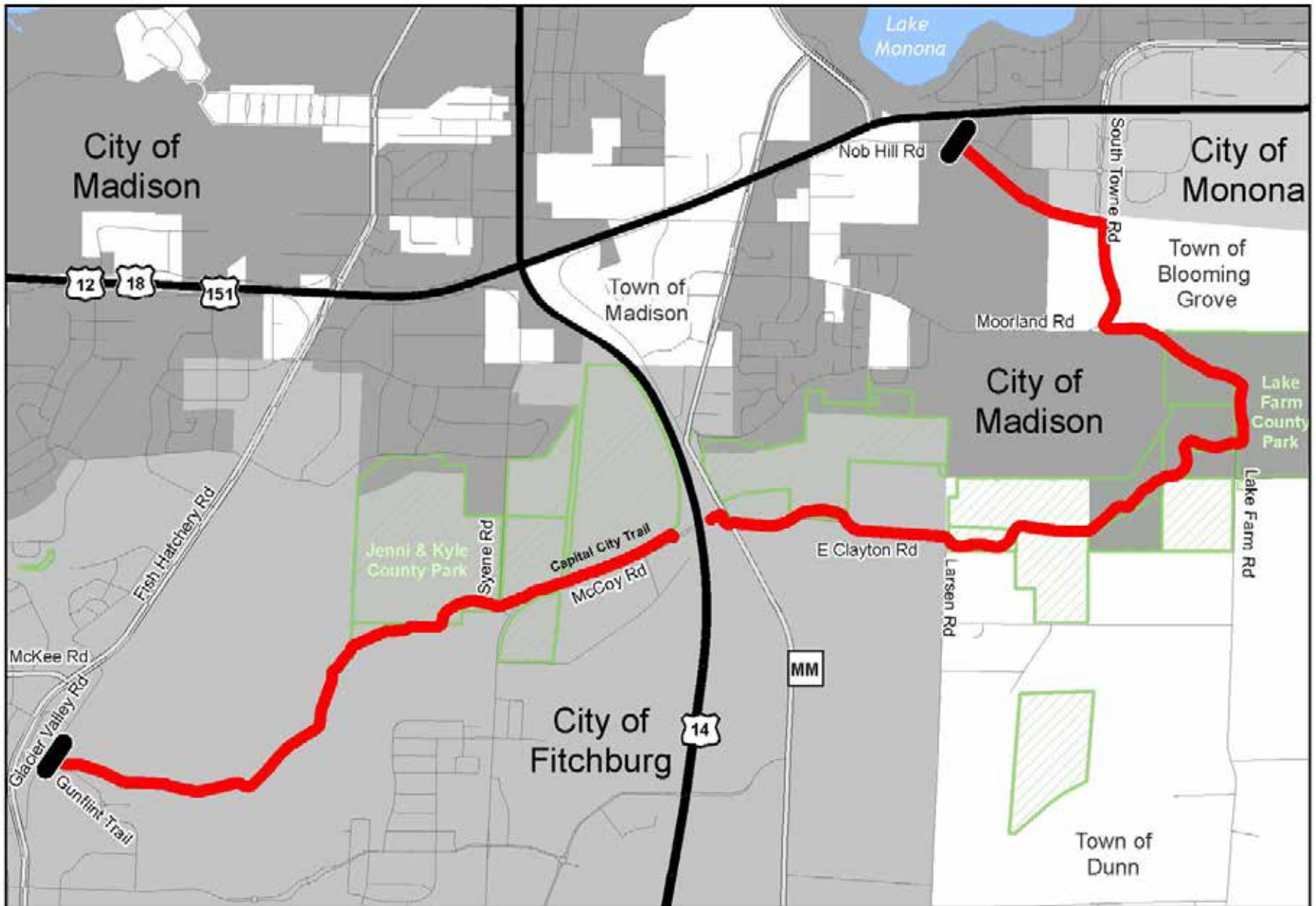
- Resurfaced 6.5 Miles

- Replaced Culverts

- Installed Wayfinding Signing & Striping

Project Information Available At:

<https://parks-lwrp.countyofdane.com/Information/Planning-Development/Capital-City-Trail-Pavement-Restoration>



## 2018 CAPITAL CITY TRAIL PAVEMENT RESTORATION

PHASE 1 PROJECT EXTENTS

**Before**



**After**



# Capital City Trail Pavement Restoration

## PHASE 2- 2019

- Approx. Cost: \$545K, \$345K County, \$200K DNR
- Resurface Glacier Valley to Seminole Hwy.
- Approx. 2 Miles of Trail
- Re-Align “S” Curve, Replace Bridge West of Fish Hatchery
- Install Wayfinding Signing, Striping

Project Information Available At:

<https://parks-lwrp.countyofdane.com/Information/Planning-Development/Capital-City-Trail-Pavement-Restoration>



H:\Parks\Mapping\Trails\Land\Capital City Trail\Maps\Pavement\Restoration\Phase\_II\BridgeLocationMap.mxd



# 2019 CAPITAL CITY TRAIL PROPOSED BRIDGE

LOCATION MAP W/ PHASE 2 PROJECT EXTENTS



06/11/2019

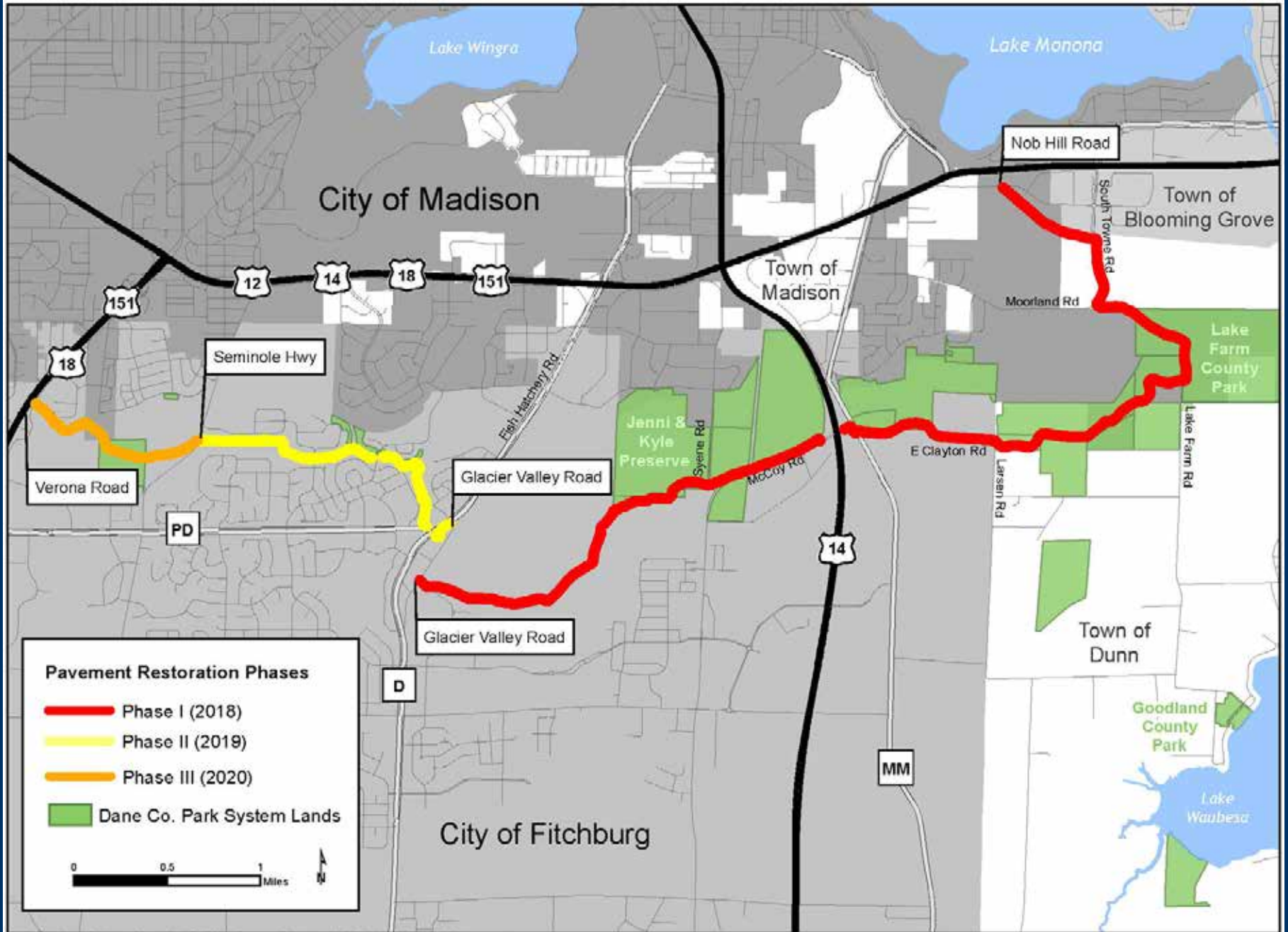
# Capital City Trail Pavement Restoration

## PHASE 3- 2020

- Resurface Seminole Hwy. To Verona Road
- Repair Stormwater Issues Between Dawley Bike Hub and Bicycle Roundabout
- Install Wayfinding Signing

Project Information Available At:

<https://parks-lwr.dane.gov/Information/Planning-Development/Capital-City-Trail-Pavement-Restoration>



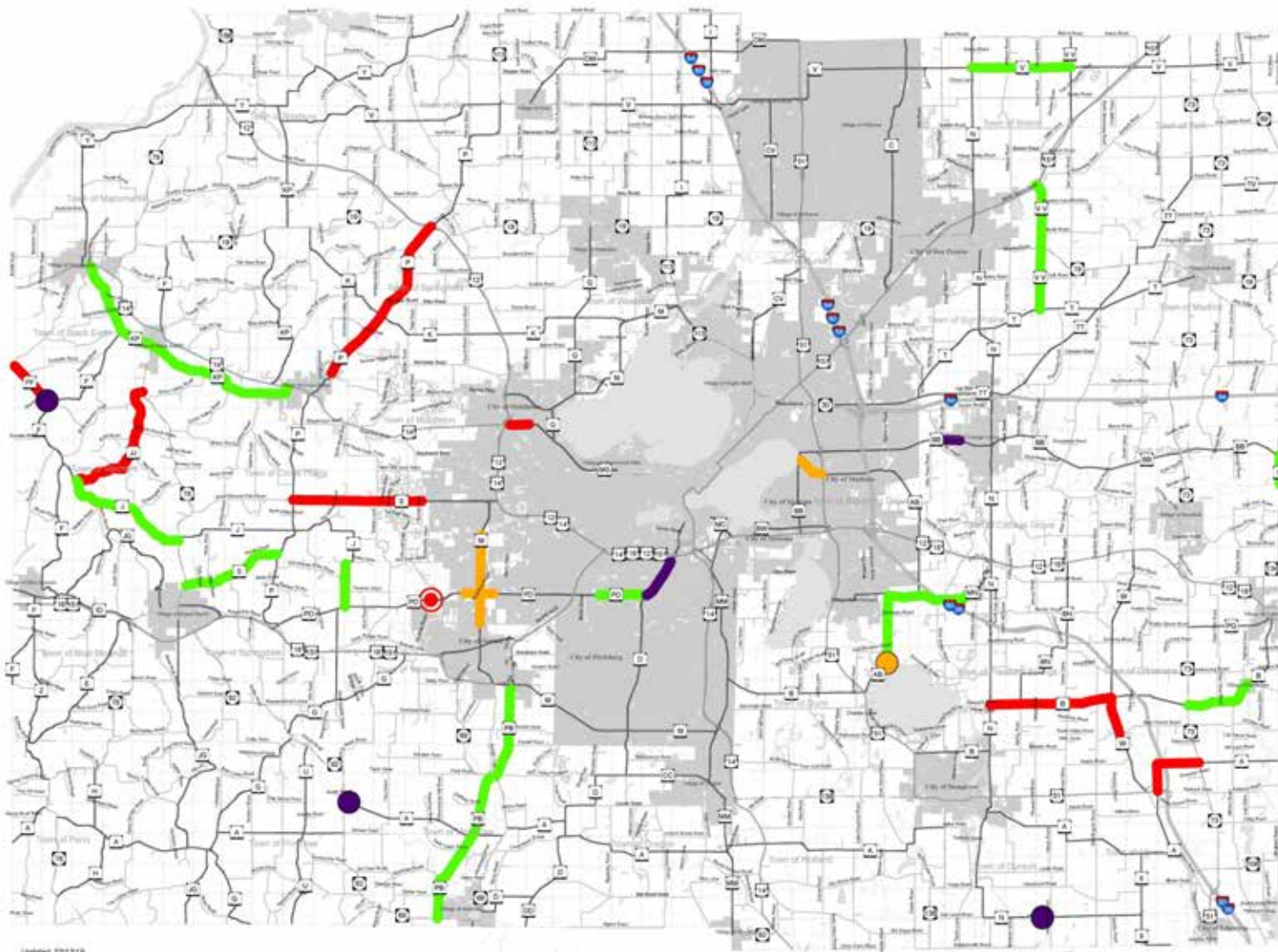


# Current Dane County Highway On Road Bicycle Improvement Projects

Pam Dunphy, P.E.  
Assistant Commissioner,  
Department of Public Works,  
Highway & Transportation

[Dunphy@countyofdane.com](mailto:Dunphy@countyofdane.com)





**DANE COUNTY  
HIGHWAY  
DEPARTMENT**



**2019**

**WORK MAP**

- CONSTRUCTION
- JOINT CONSTRUCTION
- SEALCOAT
- DESIGN
- FEDERAL BRIDGE PROGRAM
- COUNTY CULVERT/  
BRIDGE REPLACEMENT



Updated 12/15/18

More details on Dane County Highway construction projects can be found on our website at:  
[https://pwht.countyofdane.com/hw\\_engineer/projects](https://pwht.countyofdane.com/hw_engineer/projects)

# 2018 PARC & Ride Grant Awards

Sponsor	Project Title	PARC Grant Award
Village of Cambridge	CamRock/Glacial Drumlin Trail Connector	\$209,250
Village of Cottage Grove	Main Street Community Trail	\$182,500
Village of Windsor	Wolf Hollow Bicycle/Pedestrian Bridge and Bull Run Multi-use Path	\$81,600
Village of Shorewood Hills	Blackhawk Path Extension	\$26,650

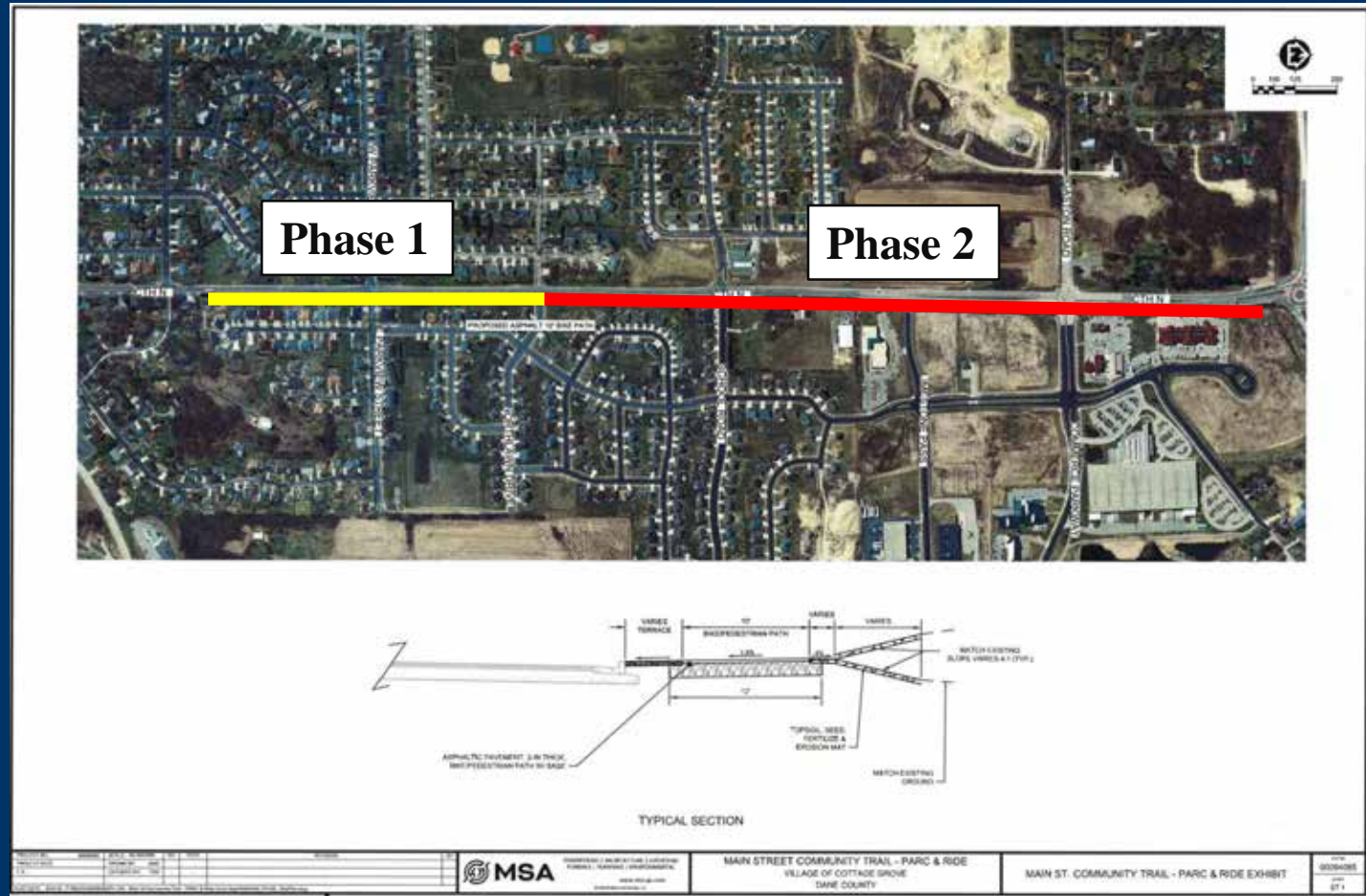
# CamRock to Glacial Drumlin Trail



# Main Street Commuter Trail

**Phase 1**  
Oak St to Northlawn  
Summer 2019

**Phase 2**  
Northlawn to I-94  
Summer 2020



# Wolf Hollow Bicycle/Pedestrian Bridge and Bull Run Multi-use Path



# Blackhawk Path Extension





# Park and Trail Flood Repair Grants

- Up to \$1 million available to communities for matching grants.
- Grant submissions are due July 31<sup>st</sup>.
- Funds can be used for park or trail flood repair costs including design, engineering, and construction costs.
- Priority for funding will be given to projects that are identified in Parks & Open Space Plan or have previously received County grants.

Questions? Contact Sara Rigelman at [rigelman@countyofdane.com](mailto:rigelman@countyofdane.com)





# Trail Steward and Volunteer Opportunities

- Consider becoming a Dane County Parks volunteer!
- Friends of Trail Program?
- Friends of Capital Springs Recreation Area
- Assist with Trail Clean Up Days, Surveys, Field User Counts, Other?

Contact: Rhea Stangel-Maier, Volunteer Coordinator  
[stangel-maier@countyofdane.com](mailto:stangel-maier@countyofdane.com)

Questions? Contact Sara Rigelman at [rigelman@countyofdane.com](mailto:rigelman@countyofdane.com)

# QUESTIONS?

