



Bicycle Wayfinding Plan Cannonball Path

August, 2016

THIS PAGE INTENTIONALLY LEFT BLANK

Table of Contents

1 Corridor Overview	1
Introduction	2
How to Use this Wayfinding Sign Plan	3
How to read the Sign Assembly Detail Sheets	4
2 Fabrication and Installation Details	5
Fabrication Specifications	6
Sign Dimensions	6
Post Style	8
Roadway Installation	8
Shared-Use Path Installation	9
3 Plan Maps	11
4 Sign Assembly Detail Sheets	17
5 Sign Schedule	77

Produced by:



THIS PAGE INTENTIONALLY LEFT BLANK



1: Corridor Overview

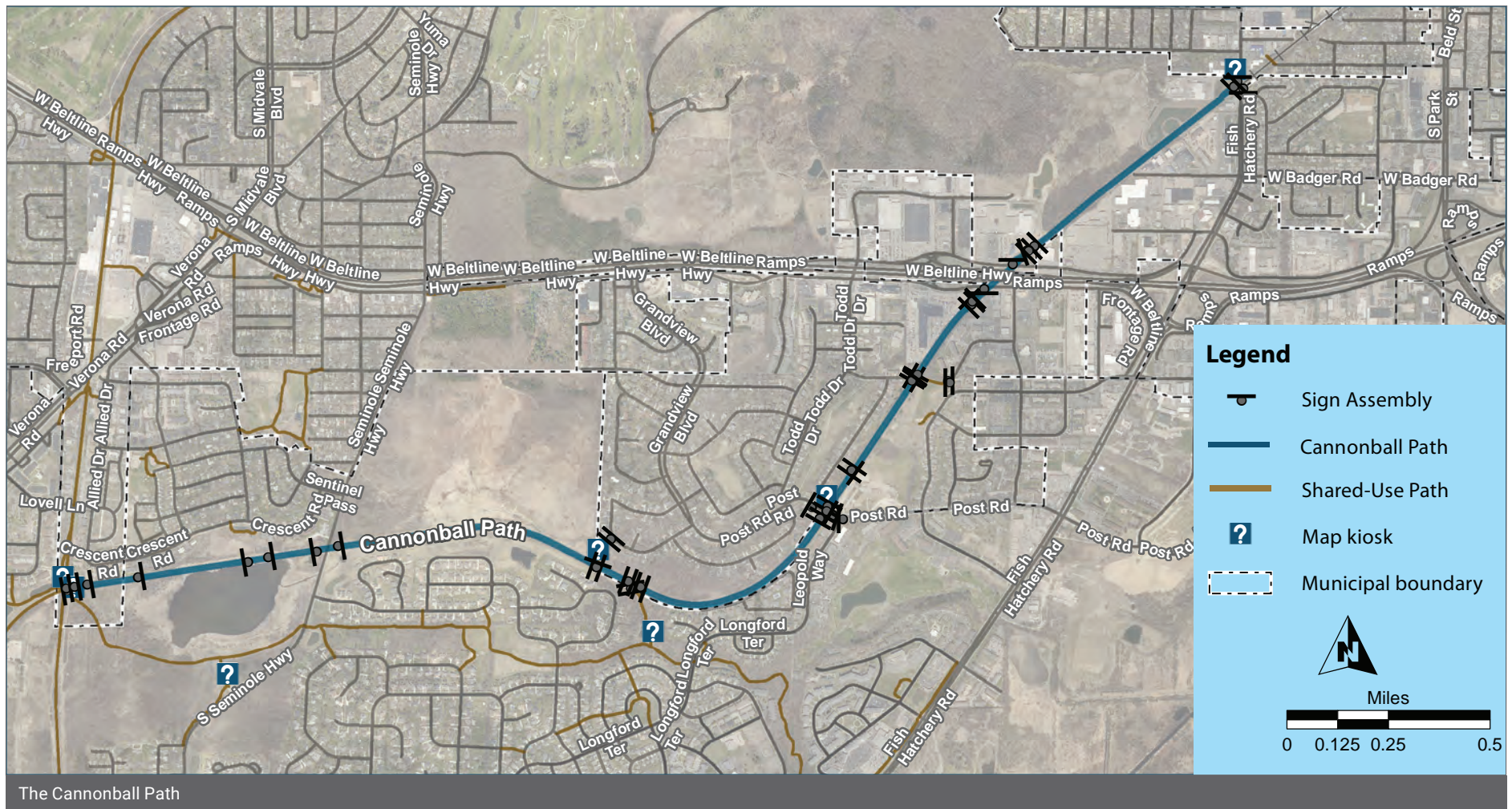
Corridor Overview

The Cannonball Path is a shared-use path in a former railroad corridor. The path starts at the bicycle roundabout where the Military Ridge State Trail, the Badger State Trail, and the Southwest Path meet, travels northeast through Fitchburg,

and ends in south Madison at Fish Hatchery Road.

A bridge across the Beltline and an extension to Fish Hatchery Road in 2015 made the Cannonball

a valuable bikeway connection. The City of Madison plans to extend the Cannonball path through Bowman Park to the Wingra Creek path in the future.



The Cannonball Path

How to Use this Wayfinding Sign Plan

This wayfinding sign plan was developed using the methodology and guidelines in the Dane County Bicycle Wayfinding Manual (“the Manual”). The Manual informed decisions about where to place sign assemblies and the destinations to include on signs. The Manual also provides detailed standards for sign design, fabrication, and installation.

This plan includes the following sections to help field crews with sign placement and installation:

Post Installation

Provides specifications on sign mounting standards and the proper hardware to be used. Some jurisdictions may have their own sign mounting standards that should be followed instead.

Corridor overview maps

Show the approximate locations of the sign assemblies along the entire Cannonball Path corridor. Sign assemblies are labeled by their Assembly ID number.

Sign Assembly Detail Sheet

Each Sign Assembly Detail Sheet displays the Assembly Identification code at the top, an image of the sign assembly as it should look mounted to the post, a map of the assembly location, and placement information. Most Detail Sheets also include a photo of the approximate location to aid in placement.

Judgement Required

This sign plan does not provide full engineering documents for each sign placement and installation. The sign placement locations in this guide were made using a combination of aerial satellite images, Google Street View, and field work. Therefore, the locations for each sign assembly are rough estimates.

For each sign assembly, the Sign Assembly Detail Sheet provides approximate distances for the sign assembly placement from both the nearest intersection and from the road or path on which the sign assembly is installed. The distances provided on the Sign Assembly Detail Sheet may point to a deep ditch, a location that blocks another sign, or a location that is blocked from view by overhanging branches. The field crew manager will need to use judgement to install the signs in a location where they are visible from the road or path.

Common Terms Used in this Plan

Sign Assembly

A combination of one or more sign panels mounted to the same post and facing the same direction.

Sign Placement

The approximate location, on a path or street, where the sign assembly should be installed

Sign Panel

One single sign plate. Most of the wayfinding sign assemblies in this guide have two or more sign panels.

Post Installation

The specific distance from the street, sidewalk or path that the post should be embedded, and the height of the post that should be used.

Sign Mounting

The height and direction, and sign panel assembly order as mounted to the post

How to Read the Sign Assembly Detail Sheets

The Sign Assembly Detail sheets are displayed in this plan in order of east to west, from the Bicycle Roundabout to Fish Hatchery Road. The Sign Assembly ID numbers do not have a particular order. They are only to be used to match the sign assembly on the plan maps, to the Assembly ID in the Detail Sheets.

- Maps in this Sign Plan display the approximate location of each sign assembly, the sign assembly ID number, and the orientation of the sign panel.
- The assembly symbols are rotated to show the direction the sign assembly is to face. The “post” symbol is shown behind the “panel” symbol.

Assembly ID: 271

Assembly Identification Number

Post Symbol

Sign Panel Symbol

Municipal Boundary

Green Box Highlights the Sign Assembly being Detailed

Scale: 1 inch = 80 feet

Location	
On	Cannonball Path
At	North of Overpass

Installation Details	
Assembly Type	Decision
Jurisdiction	City of Madison
Pole	New
Other Assemblies	Back to Back with #272
Sign Facing	Northwest
Distance off Pavement	3 feet
Distance from Intersection	50 feet from path juncture

Placement Notes

Example Sign Assembly Detail Sheet



2: Fabrication and Installation Details

Fabrication and Installation Details

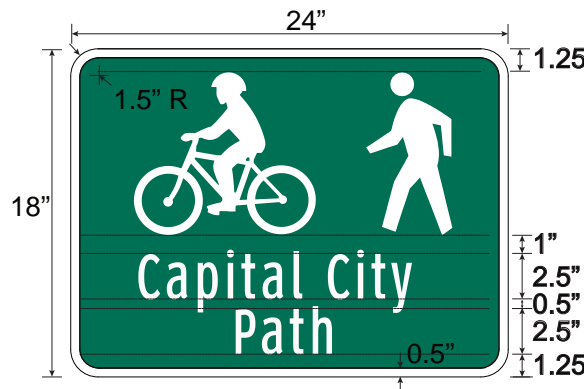
Fabrication Specifications

Signs shall be installed in accordance with each governing jurisdiction's standards and specification. For jurisdictions that don't have their own standard sign fabrication specifications, the Wisconsin Department of Transportation's (WisDOT) Standard Specifications for Signs may be used. They may be found at <http://wisconsindot.gov/Pages/doing-bus/eng-consultants/cnslt-rsrces/rdwy/stnds-spec.aspx>, under Part 6 – Incidental Construction, Section 637 Signing.

Sign Dimensions

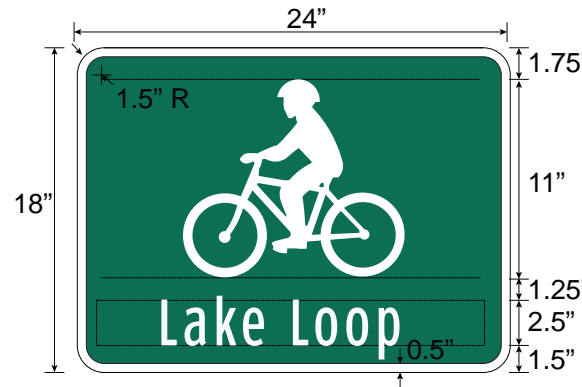
Identification/Shared-Use Paths (I-SP)

- 18" tall x 24" wide
- Highway Gothic font with at least 2" capital letter height; 2.5" height is preferred. Use upper and lower case for text
- Shared-Use Paths should be identified with bicycle and pedestrian symbols



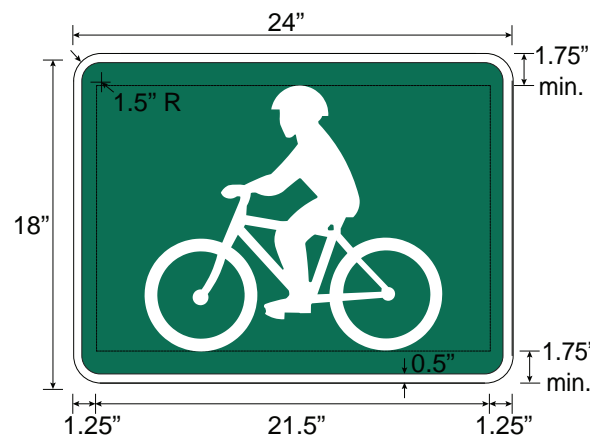
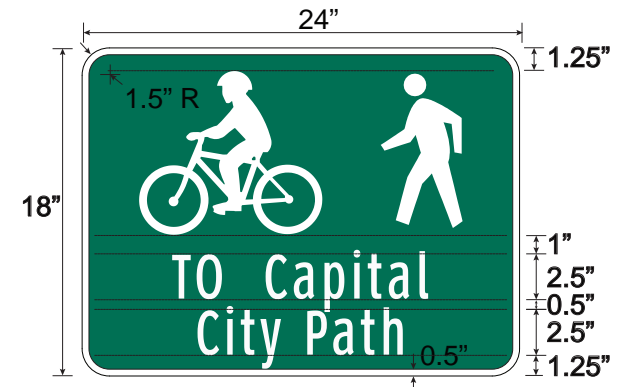
Identification/On-Street Routes (I-OS)

- 18" tall x 24" wide
- Bicycle rider symbol only
- For "signature" named on-street routes, include the name of the route below the bicycle symbol in Highway Gothic font with at least 2" capital letter height. 2.5" height is preferred. Use upper and lower case for text.



Identification/Path Access (I-PA)

- 18" tall x 24" wide
- Highway Gothic font with at least 2" capital letter height; 2.5" height is preferred.
- "TO" is upper case, path name is upper and lower case
- Shows bicycle and pedestrian mode symbols and the name of the path

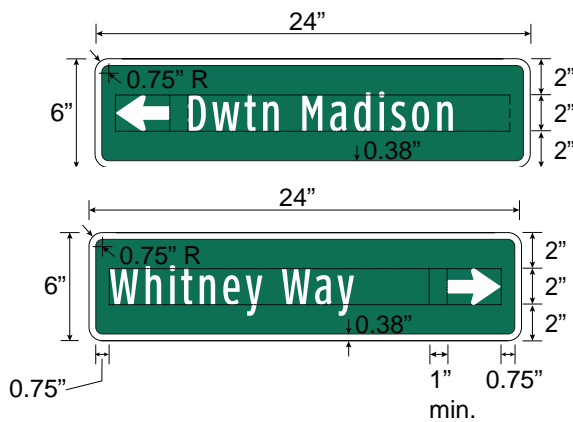


Fingerboards

- 6", 9", or 12" tall x 24" wide
- Highway Gothic font with 2" capital letter height.
- Use upper and lower case for text
- Standard horizontal spacing between the main elements of a fingerboard (arrows, text, symbols, and distance) is one inch (1"); the recommended minimum spacing is 3/4".

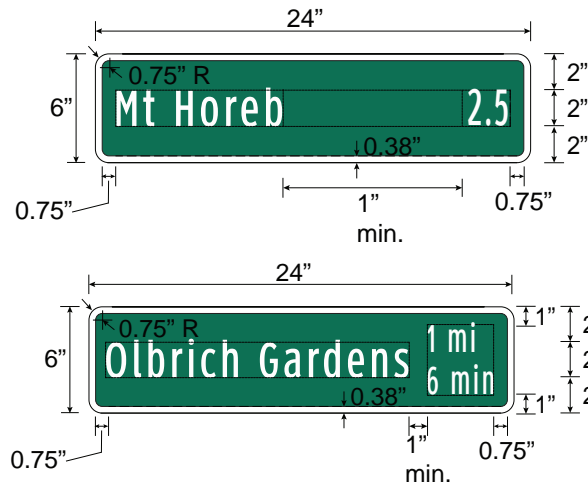
Fingerboard Arrow Panel (FB-A)

- Shows destination name and directional arrows
- Place left and through arrows on the far left of the sign; place right arrows on the far right



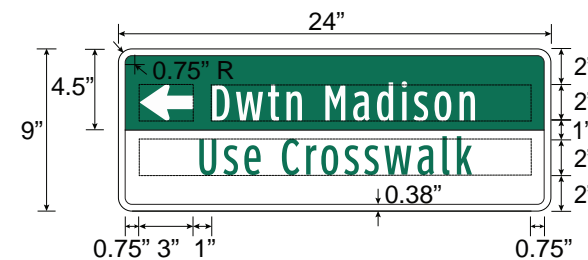
Fingerboard Distance Panel (FB-D)

- Shows destination name and distance (and optionally, time)



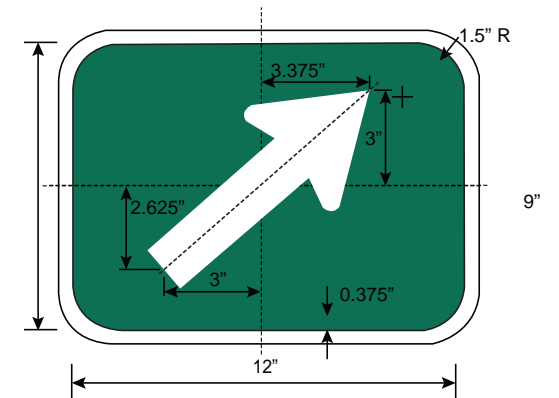
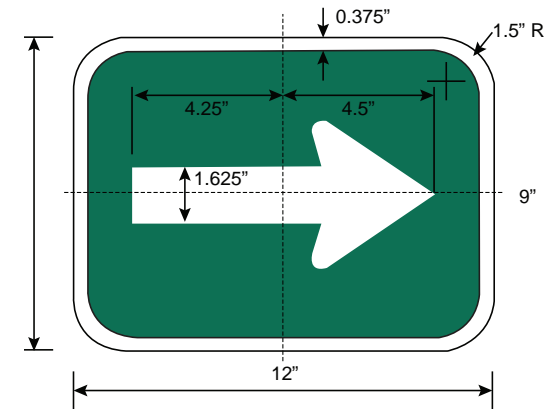
Fingerboard Navigation Aid Panel (FB-NA)

- Combines the FB-A or FB-D panels with supplementary information to help cyclists use preferred route
- Green text on white background
- Center text, except when accompanied by an arrow, in which case it should be justified to the opposite side of the arrow



Arrow Plaques (AR)

- 9" tall x 12" wide
- Any of the standard MUTCD directional arrow plates may be used



Installation Details

Signs and sign posts shall be installed according to the governing jurisdiction's standards and specifications. For jurisdictions that don't have their own standards, the following may be used.

Post style

Sign posts should allow signs to be mounted on all four sides. The following post styles are acceptable:

- 2" square perforated galvanized post
- 2 3/8" round galvanized post
- 4" square wood post (for parks and natural settings)

The length of the post and the depth of the embedment will depend upon the overall weight of the signs and the soil/pavement conditions.

Roadway Installation

Posts of 12' in height can usually accommodate an identification panel with two fingerboard panels.

Wayfinding assemblies should be installed on separate posts from existing signs, except where they do not conflict with the existing sign.

- Wayfinding assemblies may be placed above parking restriction signs.
- Wayfinding assemblies may be placed below Bike Lane signs.
- The post may need to be replaced with a longer post to maintain the 7' minimum vertical clearance.

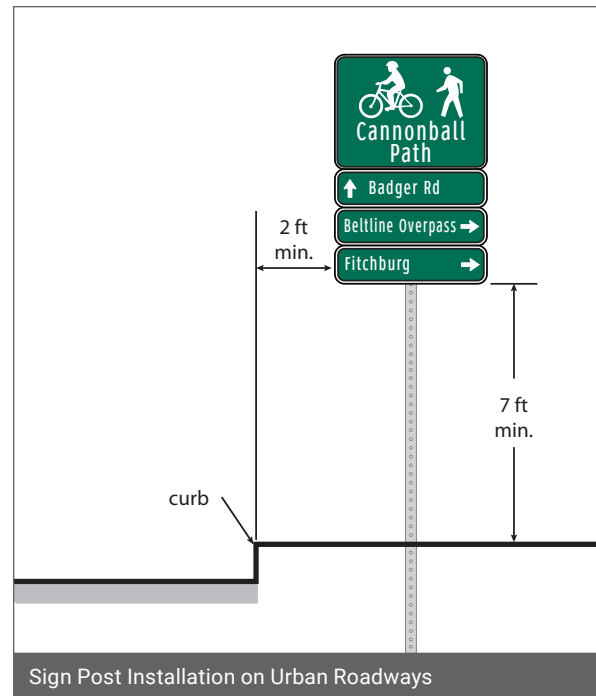
Urban Roadways

Vertical Clearance

- Minimum of 7 feet from the ground to the bottom edge of the sign.

Lateral Clearance

- Minimum of 2 feet from face of the curb to the side edge of the sign (post should be installed at least 3 feet from the face of the curb).
- In dense commercial areas where existing posts are close to the curb: 1 foot from face of curb to edge of sign (post should be in-stalled at least 2 feet from face of curb).
- Signs should not intrude into a sidewalk.



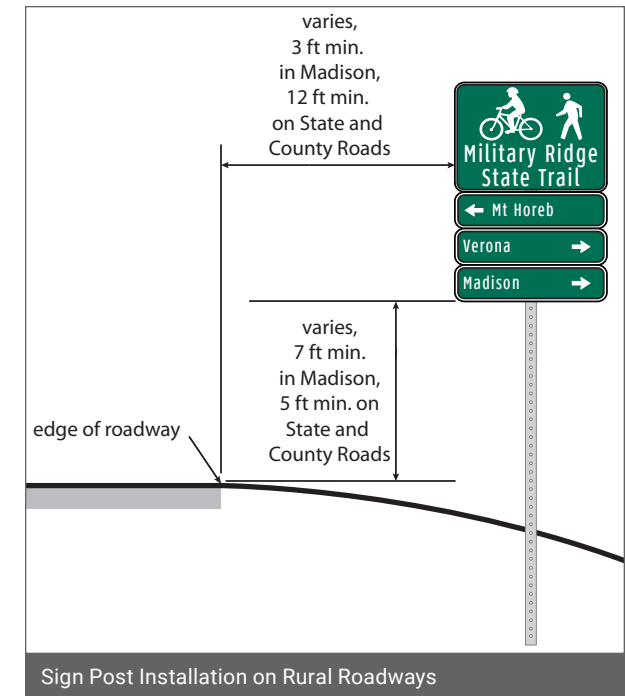
Rural Roadways

Vertical Clearance

- Municipal Streets: Refer to local jurisdiction standards.
- State and County Roads: Minimum of 5 feet from the pavement to the bottom edge of the sign.

Lateral Clearance

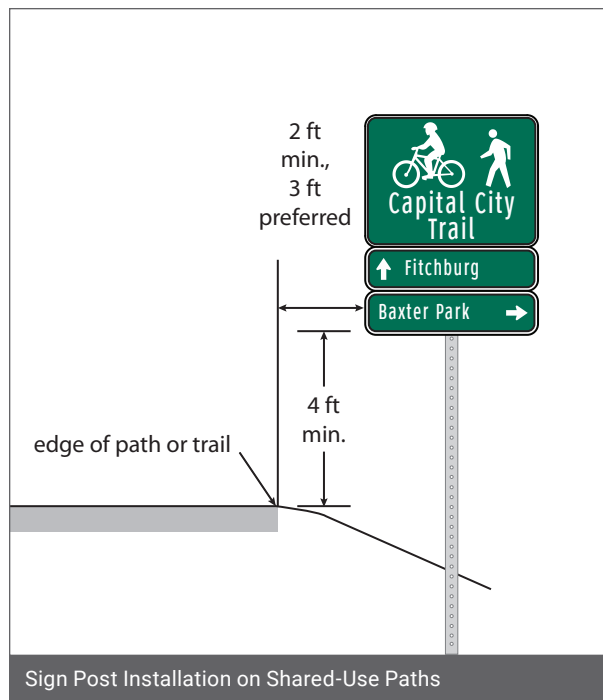
- Municipal Streets: Refer to local jurisdiction standards.
- State and County Roads: minimum of 12 feet from the edge of the travel lane to the edge of the sign.



Shared-Use Path Installation

Posts of 10' in height can usually accommodate an identification panel with two fingerboard panels. This height will allow for the installation of supplementary signs while maintaining a minimum 4' height as measured from the height of the shared use path to the bottom edge of the bottom sign.

It is common on shared-use paths for two sign assemblies to be mounted on the same sign post. If signs are mounted perpendicularly using standard bolts, longer posts may be required. Alternatively, jurisdictions may consider the use of wing brackets to allow two or more signs to be mounted perpendicularly at the same height.



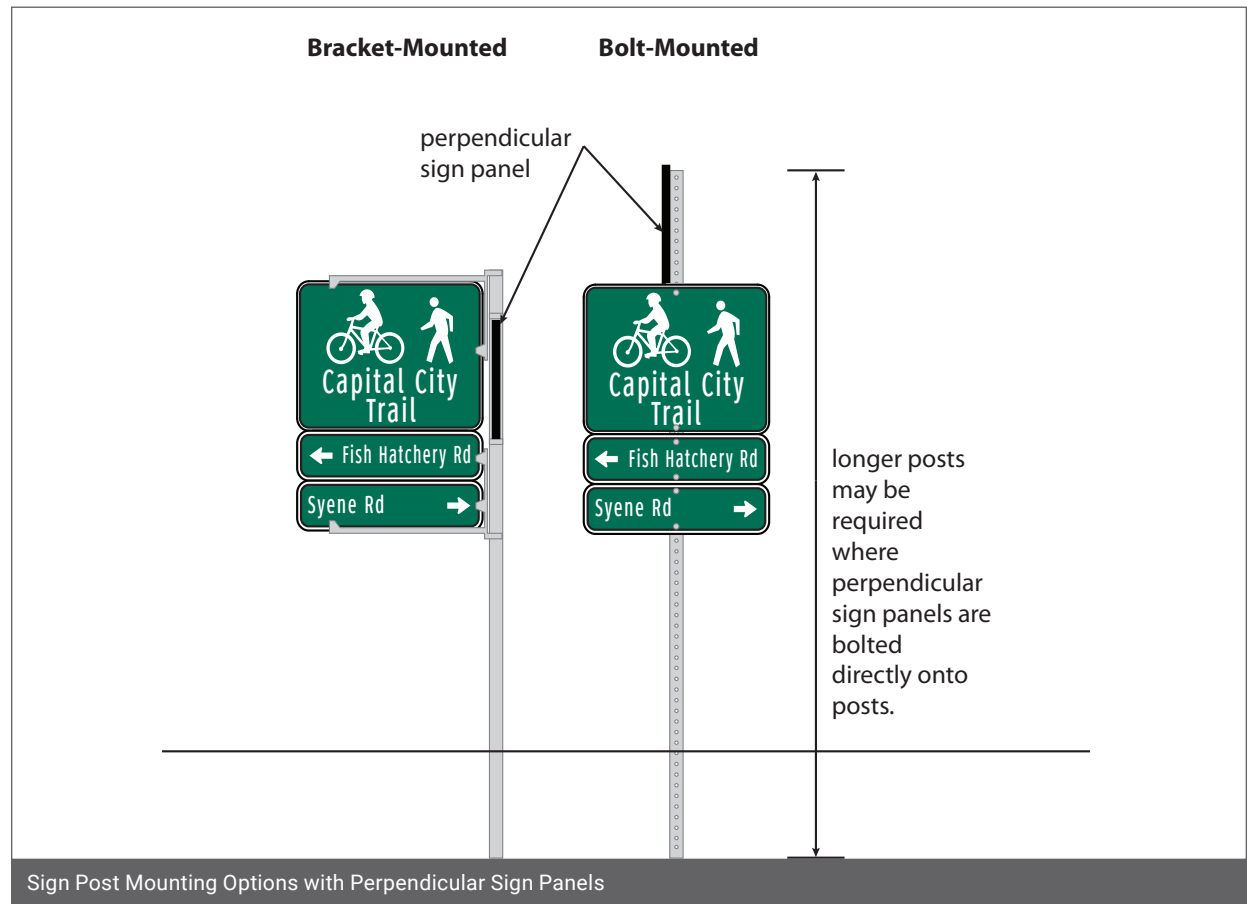
Shared Use Paths

Vertical Clearance

- Minimum of 4 feet from the height of the shared use path to the bottom edge of the sign.
- For signs placed overhead of shared-use paths, a minimum of 8 feet vertically over entire width of shared-use path.
- Mile Markers along shared-use paths should be installed so the bottom of the sign is 3 feet from the height of the shared-use path.

Lateral Clearance

- Preferred: 3 feet from the edge of the path to the side edge of the sign (post should be installed at least 4 feet from the edge of the path).
- Minimum: 2 feet from the pavement to the side edge of the sign (post should be installed at least 3 feet from the edge of the path).



THIS PAGE INTENTIONALLY LEFT BLANK



3: Plan Maps

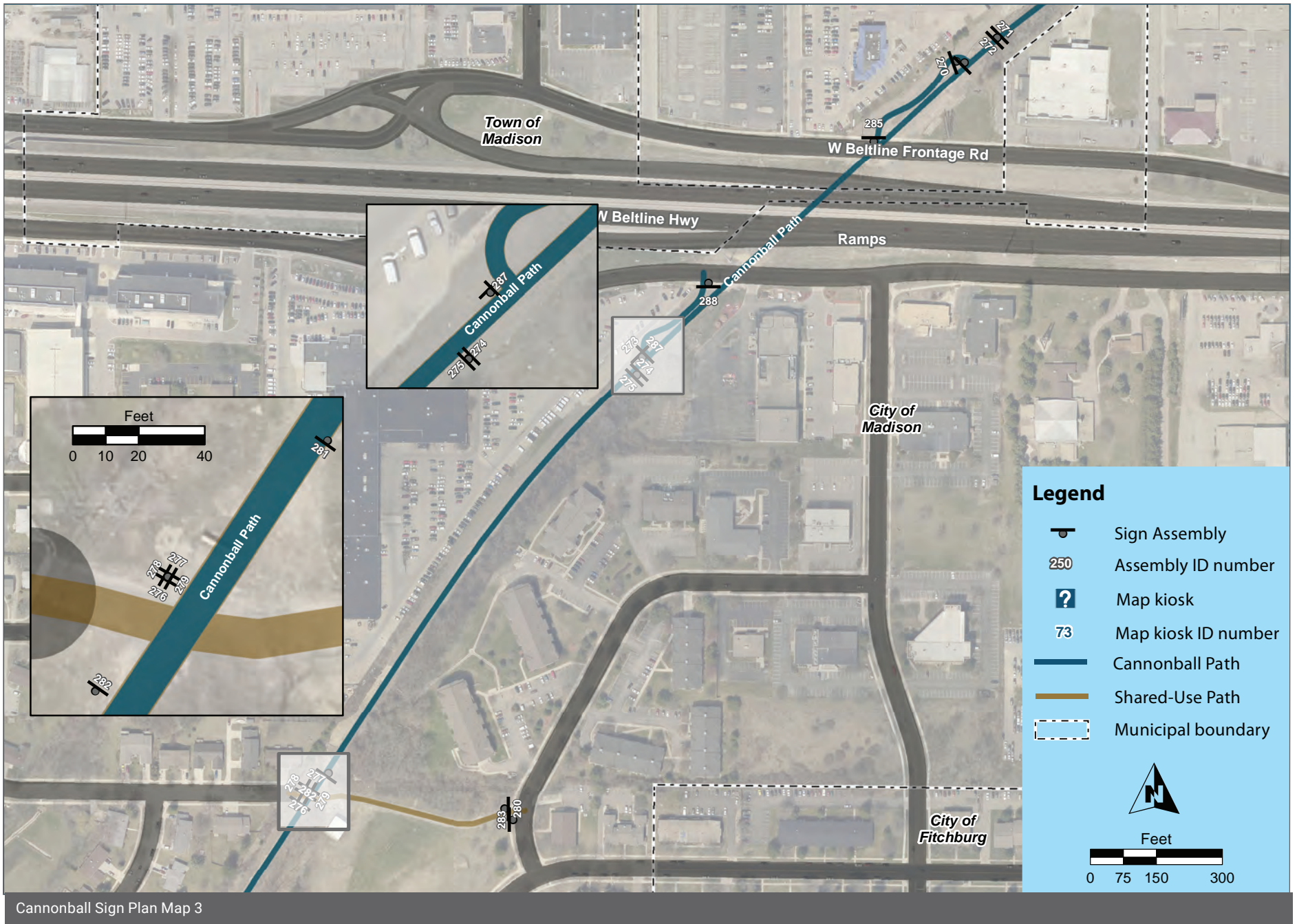
Plan Maps

The following 4 pages show the wayfinding sign plan for the entire Cannonball Path corridor. Sign Assemblies are labeled with their Assembly ID number. The symbols are rotated to show the direction the sign assembly should be facing, so that the “post” symbol is shown behind the sign “panel” symbol.












Cannonball Sign Plan Map 2

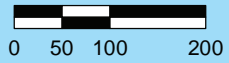


Legend

-  Sign Assembly
-  250 Assembly ID number
-  ? Map kiosk
-  73 Map kiosk ID number
-  Cannonball Path
-  Shared-Use Path
-  Municipal boundary



Feet



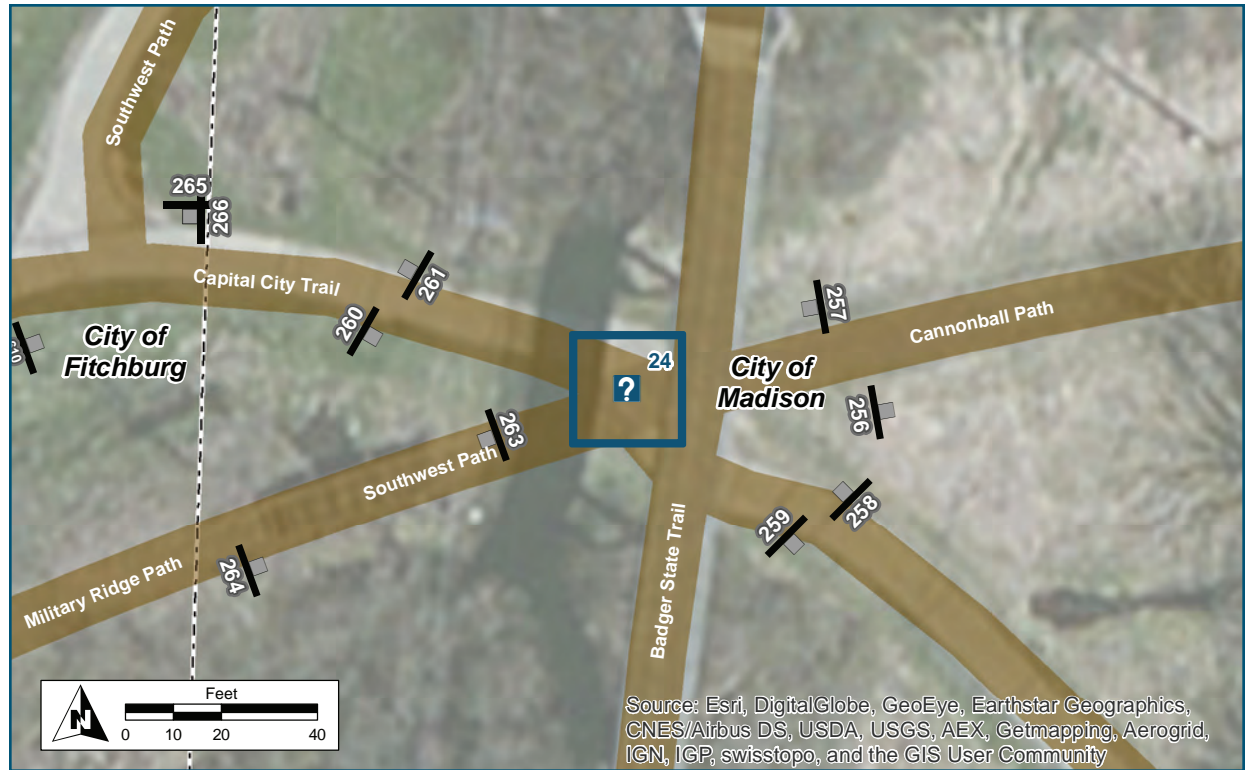
Cannonball Sign Plan Map 4

THIS PAGE INTENTIONALLY LEFT BLANK



4: Sign Assembly Detail Sheets

Kiosk ID: 24



Location

On Cannonball Path
At Bicycle Roundabout

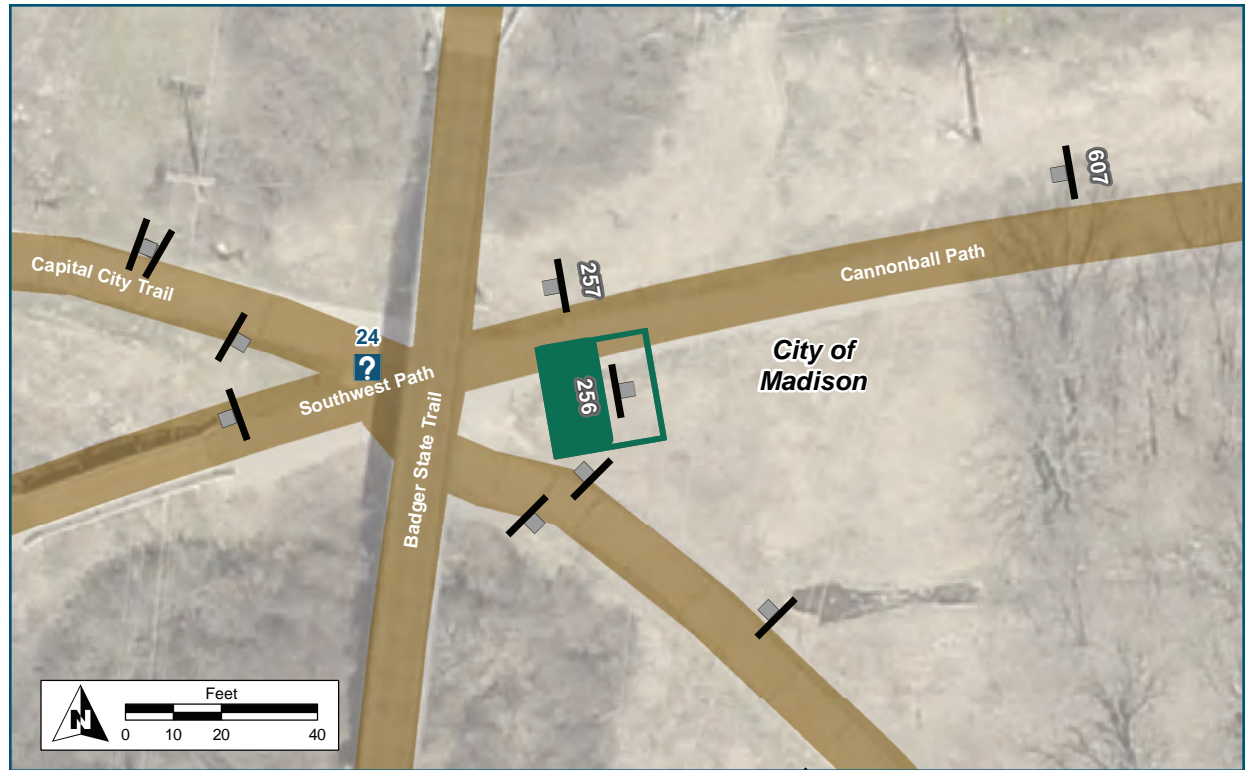
Installation Details

Kiosk Type	Map Kiosk, self registration station
Jurisdiction	Fitchburg
Existing or Proposed	Existing
Other Amenities	Bench
Sign Facing	East/West
Distance off Pavement	0 ft
Distance from Intersection	0 ft

Placement Notes

No change to existing kiosk

Assembly ID: 256



Location	
On	Cannonball Path
At	East of Bicycle Roundabout
Installation Details	
Assembly Type	Confirmation
Jurisdiction	Fitchburg
Post	Existing
Other Assemblies	None
Sign Facing	West
Post Distance off Pavement	5 ft
Distance from Intersection	10 ft east of bicycle roundabout
Placement Notes	
Replace existing assembly with proposed assembly.	

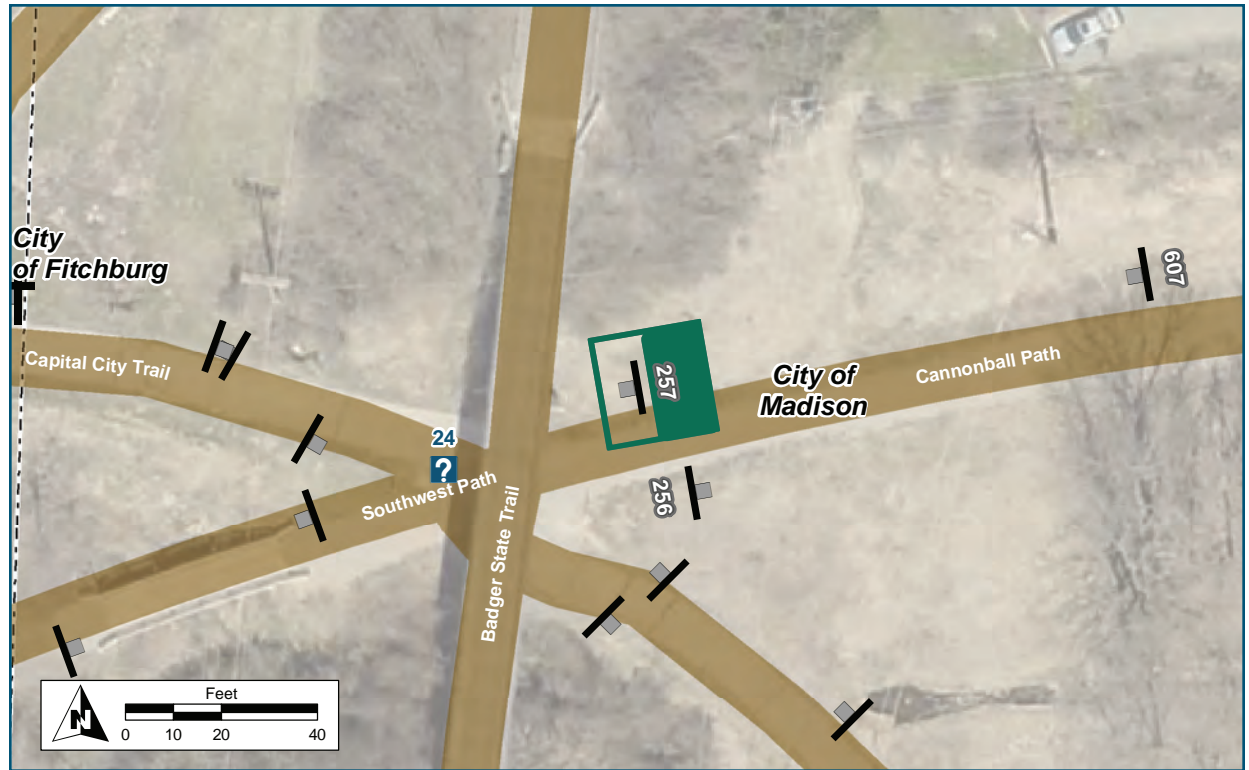


Assembly ID: 257



Verona Rd
Underpass via
Cap. City Path

Camp Randall via
Southwest Path



Location

On Cannonball Path
At East of Bicycle Roundabout

Installation Details

Assembly Type	Decision
Jurisdiction	Fitchburg
Post	Existing
Other Assemblies	None
Sign Facing	East
Post Distance off Pavement	5 ft north of path
Distance from Intersection	About 5 ft East of Bicycle Roundabout

Placement Notes

Replace Existing Assembly with Proposed Panels

Assembly ID: 607



↑ Military Ridge Path
 Path

↑ Verona

↑ Badger Prairie Co Park



Location	
On	Cannonball Path
At	East of Bicycle Roundabout
Installation Details	
Assembly Type	Decision
Jurisdiction	Fitchburg
Post	Existing
Other Assemblies	None
Sign Facing	West
Post Distance off Pavement	4 ft
Distance from Intersection	About 100 ft E of roundabout
Placement Notes	
Replace Existing Assembly with Proposed Panels.	



Assembly ID: 640

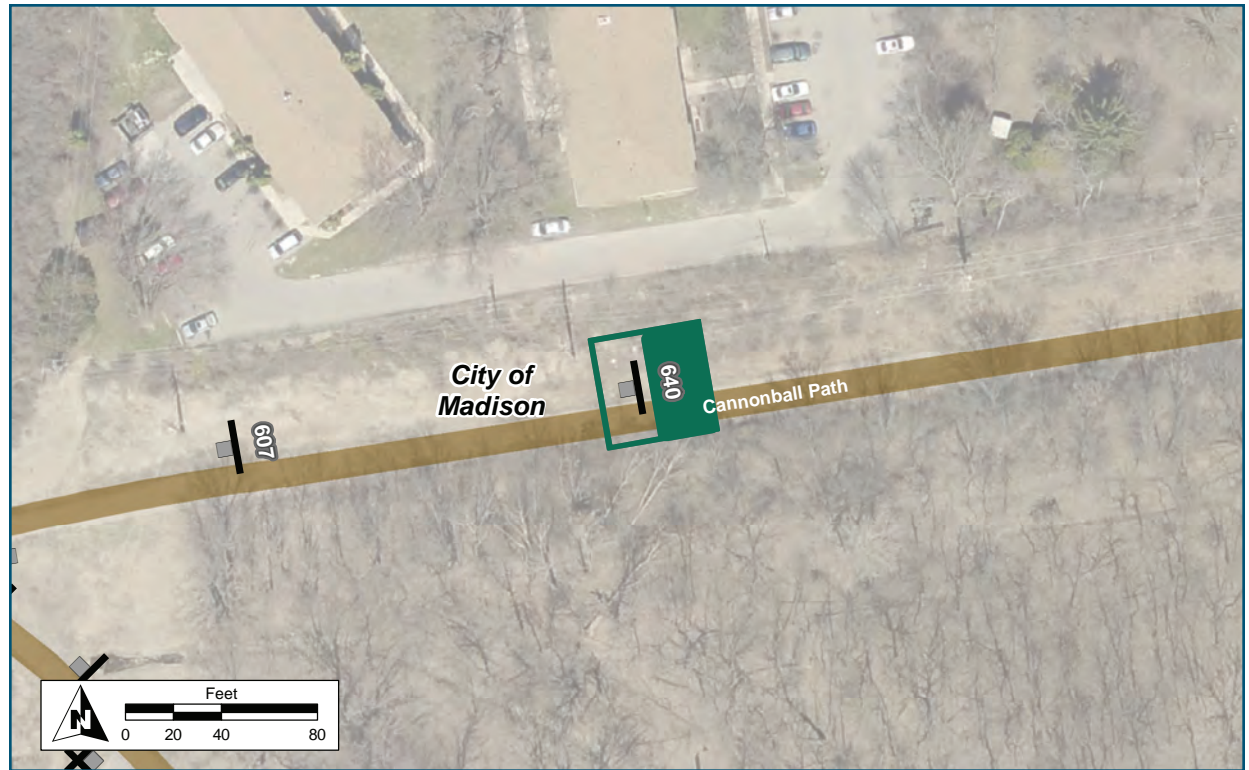


In 300 Feet

← Seminole Mtb Trails 

← Dawley Bike Hub   
via Cap. City Path

← Belleville via Badger State Trl



Location

On Cannonball Path
At East of Bicycle Roundabout

Installation Details

Assembly Type	Decision
Jurisdiction	Fitchburg
Post	New
Other Assemblies	None
Sign Facing	East
Post Distance off Pavement	5 ft north of path
Distance from Intersection	300 ft East of Bicycle Roundabout

Placement Notes

Assembly ID: 639



Dunn's Marsh 0.2 mi
Roundabout 1 min



Regional Path
Connections



Location

On Cannonball Path
At East of Bicycle Roundabout

Installation Details

Assembly Type	Confirmation
Jurisdiction	Fitchburg
Post	New
Other Assemblies	None
Sign Facing	West
Post Distance off Pavement	5 ft north of path
Distance from Intersection	900-1,000 ft East of Bicycle roundabout

Placement Notes

Assembly ID: 250



↑ Seminole Hwy

↑ Beltline Overpass

← Crescent Rd



Location

On Cannonball Path
At West of Crescent Road Boardwalk

Installation Details

Assembly Type Existing Decision
Jurisdiction Fitchburg
Post Existing
Other Assemblies None
Sign Facing West
Post Distance off Pavement 4 ft
Distance from Intersection About 100 ft West of boardwalk

Placement Notes

Eventually Replace Existing Assembly with Proposed Assembly.





↑ Dunn's Marsh
Bike Roundabout

Regional Path
Connections

↑ Seminole Mtb
Trails 

Crescent Rd →



Location

On Cannonball Path
At East of Crescent Road Boardwalk

Installation Details

Assembly Type	Existing Decision
Jurisdiction	Fitchburg
Post	Existing
Other Assemblies	None
Sign Facing	East
Post Distance off Pavement	4 ft North of Path
Distance from Intersection	About 150 ft East of Boardwalk

Placement Notes

Eventually Replace Existing Assembly with Proposed Assembly



Assembly ID: 253

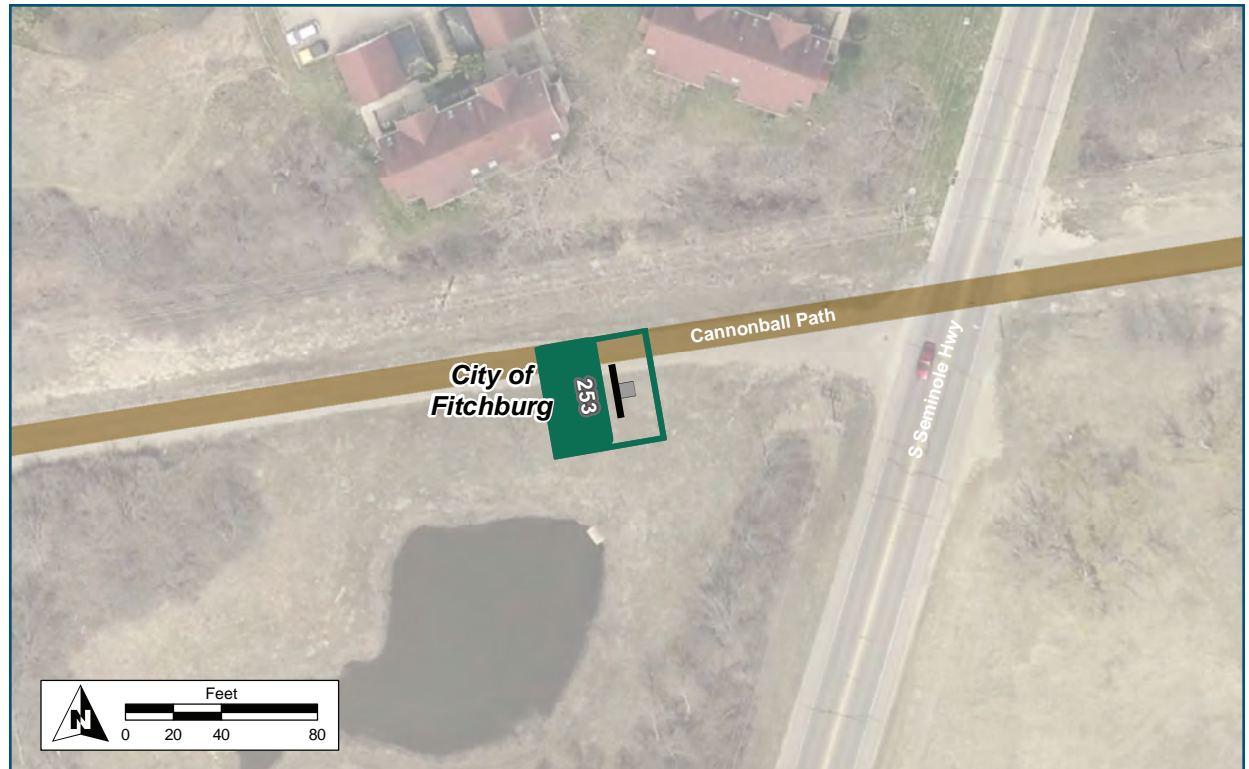


↑ Post Road

↑ Beltline Overpass

← UW Arboretum
West Entrance

Dawley Bike Hub →

Location

On Cannonball Path
 At West of Seminole Highway

Installation Details

Assembly Type	Decision
Jurisdiction	Fitchburg
Post	Existing
Other Assemblies	None
Sign Facing	West
Post Distance off Pavement	5 ft from path
Distance from Intersection	About 100 ft West of Seminole Highway

Placement Notes

Eventually Replace Existing Assembly with Proposed Assembly



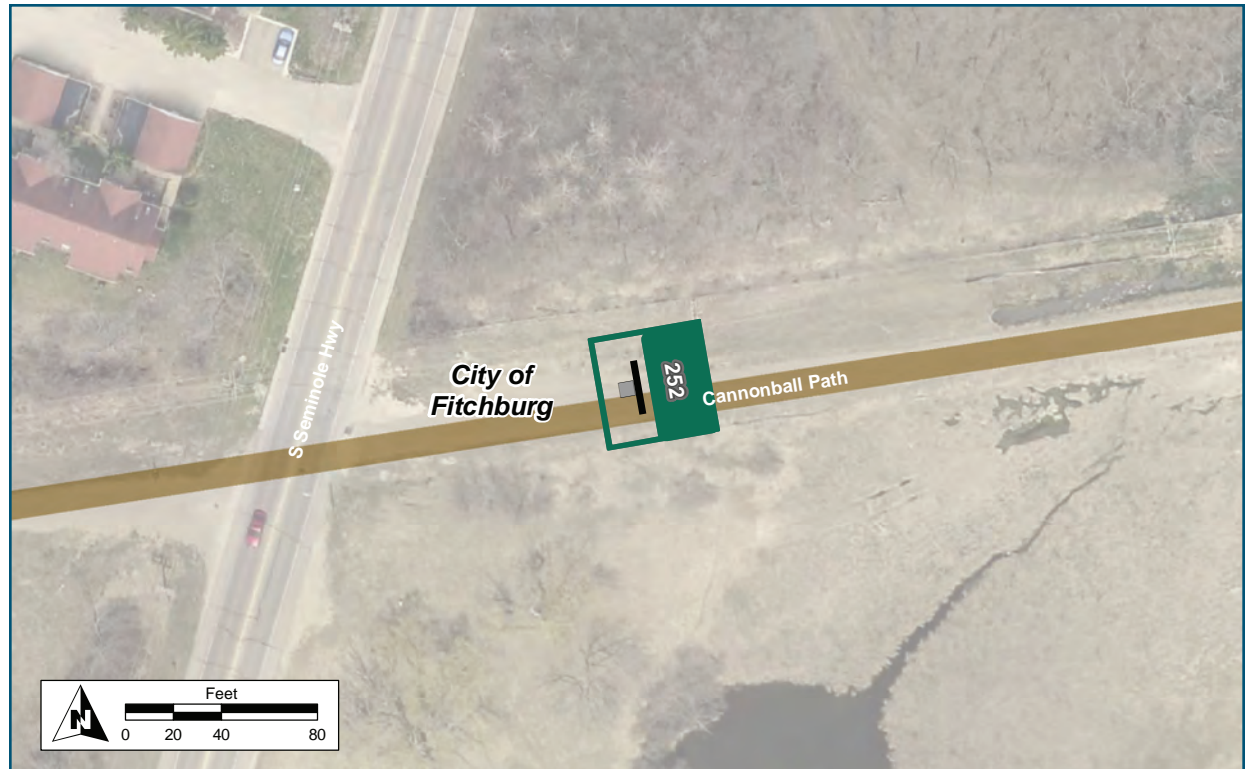


↑ Dunn's Marsh
Bike Roundabout

↑ Seminole Mtb
Trails 

← Dawley Bike
Hub    

UW Arboretum →
West Entrance



Location

On Cannonball Path
At East of Seminole Highway

Installation Details

Assembly Type	Decision
Jurisdiction	Fitchburg
Post	Existing
Other Assemblies	None
Sign Facing	East
Post Distance off Pavement	4 ft from path
Distance from Intersection	About 120 ft East of Seminole Highway

Placement Notes

Eventually Replace Existing Assembly with Proposed Assembly

Existing Sign Assembly



UW Arboretum 1.0 →

← Dawley Hub 0.4
   

↑ Regional Paths 0.7

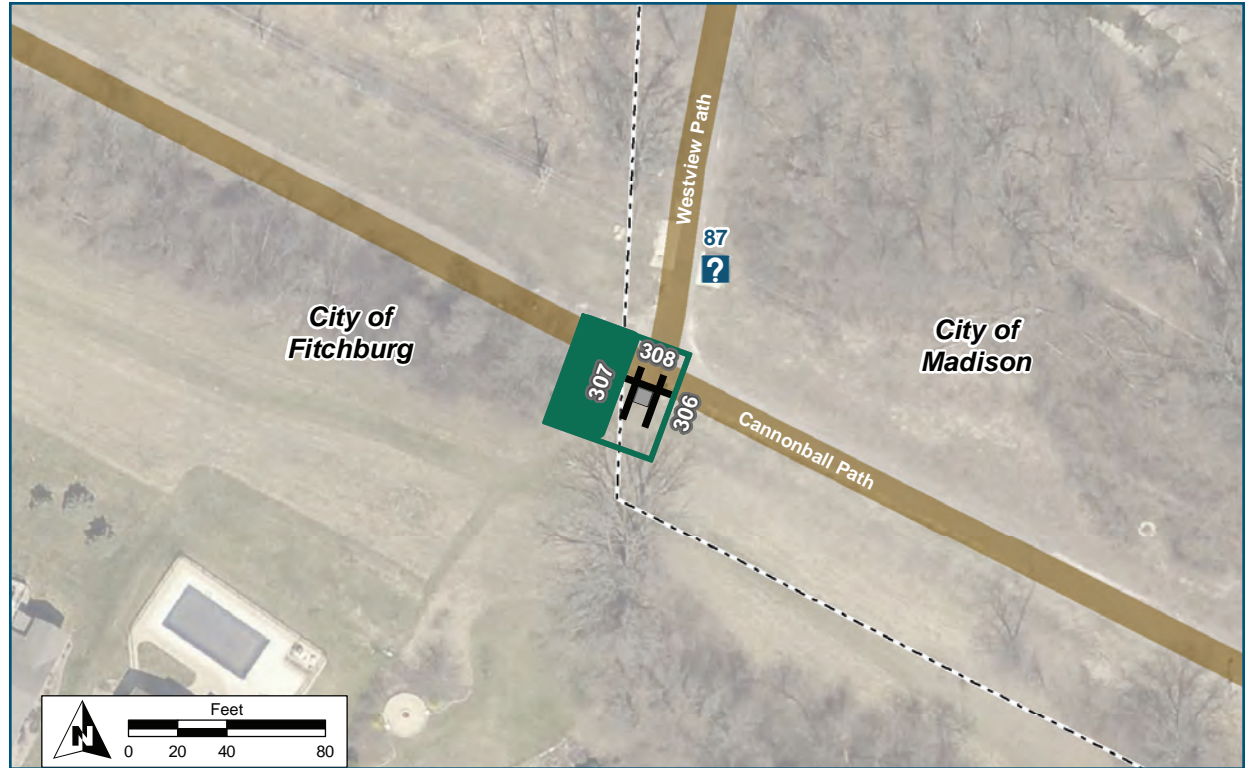
Assembly ID: 307



Madison

← UW Arboretum
SE Entrance 

← Westview Ln



Location

On Cannonball Path

At South of spur to Arboretum

Installation Details

Assembly Type Decision

Jurisdiction City of Madison

Post New 12 Foot Post

Other Assemblies Back to Back with #306,
Perpendicular to #308

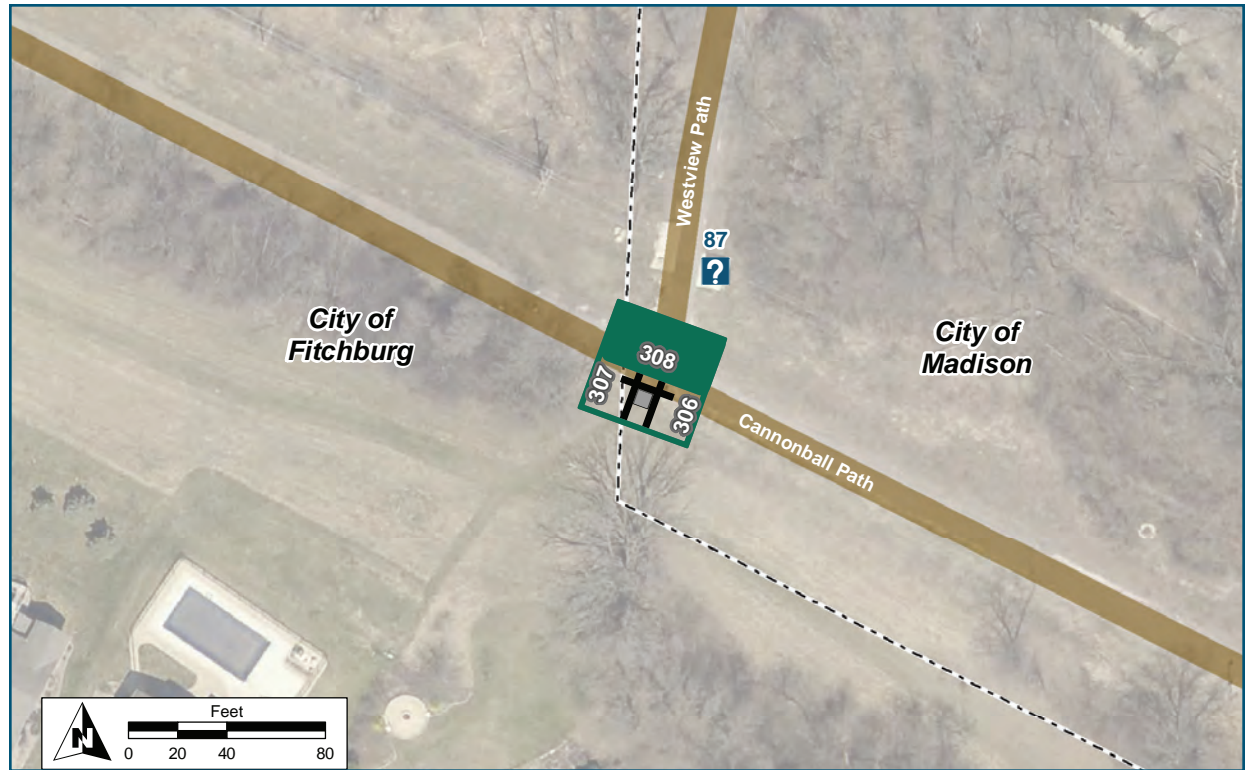
Sign Facing West

Post Distance off Pavement 4 ft south of path

Distance from Intersection 0 ft

Placement Notes

Place on south side of intersection with trail spur



Location

On Cannonball Path
At Arboretum Spur

Installation Details

Assembly Type Decision
Jurisdiction City of Madison
Post New 12 Foot Post
Other Assemblies Perpendicular with #306 and #307
Sign Facing North
Post Distance off Pavement 4 ft south of path
Distance from Intersection 0 ft

Placement Notes

Place on south side of intersection with trail spur



Assembly ID: 306

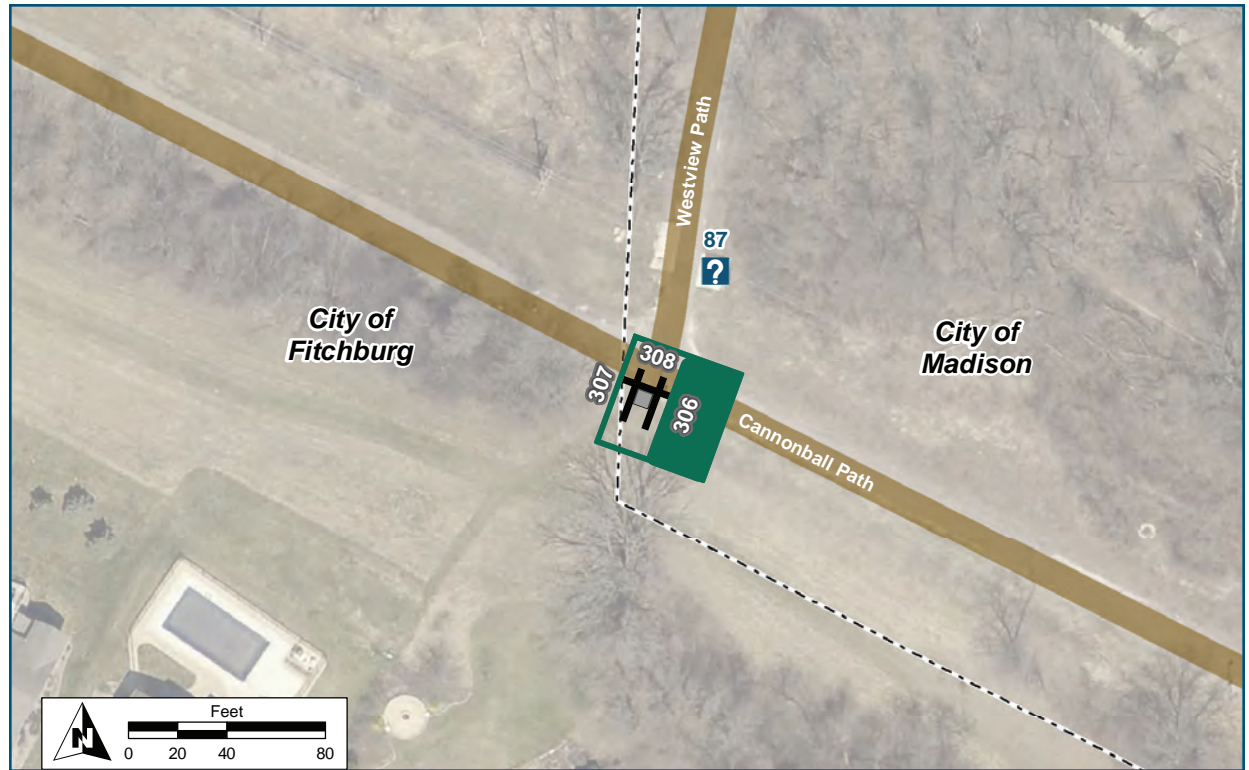


Madison

UW Arboretum
SE Entrance



Westview Ln



Location

On Cannonball Path

At Arboretum Spur

Installation Details

Assembly Type Decision

Jurisdiction City of Madison

Post New 12 Foot Post

Other Assemblies Back to Back with #307,
Perpendicular to #308

Sign Facing East

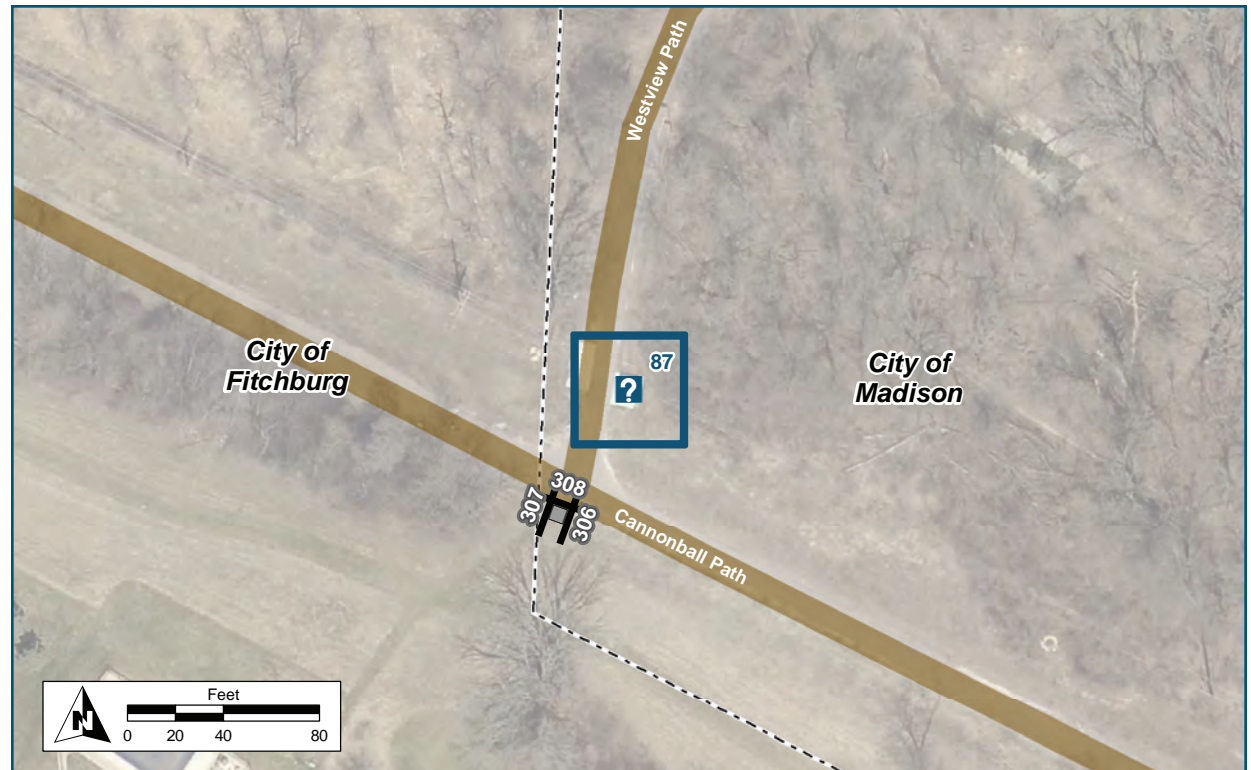
Post Distance off Pavement 4 ft south of path

Distance from Intersection 0 ft

Placement Notes

Place on south side of intersection with trail spur

See Placement Notes



Location

On Cannonball Path

At Arboretum Spur

Installation Details

Kiosk Type Kiosk Map, rest area

Jurisdiction City of Madison

Existing or Proposed Existing

Other Amenities Bike racks, bench, water fountain

Sign Facing South

Distance off Pavement 20 ft north of path

Distance from Intersection 0 ft

Placement Notes

Map is difficult to read due to fogging and condensation.



Assembly ID: 312

Existing
Westview Ln

Grandview Blvd/ Post Rd →
Via Westview Ln



Location

On Cannonball Spur

At Westview Lane

Installation Details

Assembly Type Path Exit

Jurisdiction City of Madison

Post Existing

Other Assemblies Back to Back with #311

Sign Facing Southeast

Post Distance off Pavement Existing 2 ft

Distance from Intersection Existing 2 ft from sidewalk

Placement Notes

Place under existing street name sign

Assembly ID: 311

Westview Ln
Existing



Motor Driven
Existing
Vehicles Prohibited



Location

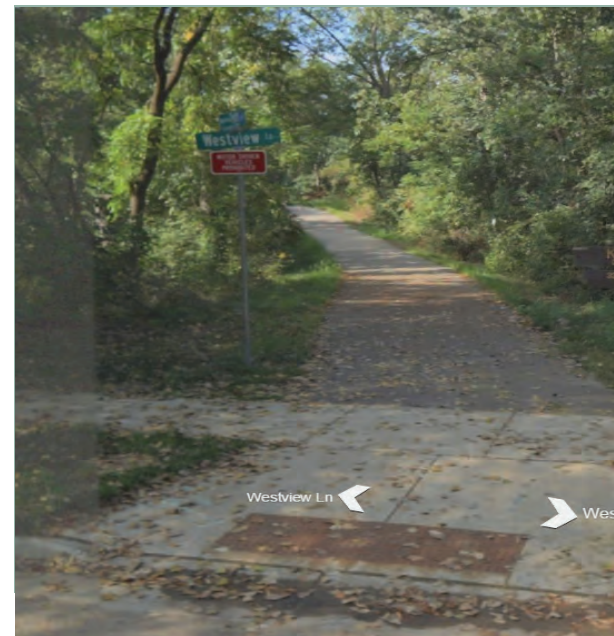
On Cannonball Spur
At Westview Lane

Installation Details

Assembly Type	Path Access
Jurisdiction	City of Madison
Post	New
Other Assemblies	Back to Back with #312
Sign Facing	Northeast
Post Distance off Pavement	Existing 2 ft
Distance from Intersection	Existing 2 ft from sidewalk.

Placement Notes

Place under existing street name sign, and above "MOTOR DRIVEN VEHICLES PROHIBITED" sign.





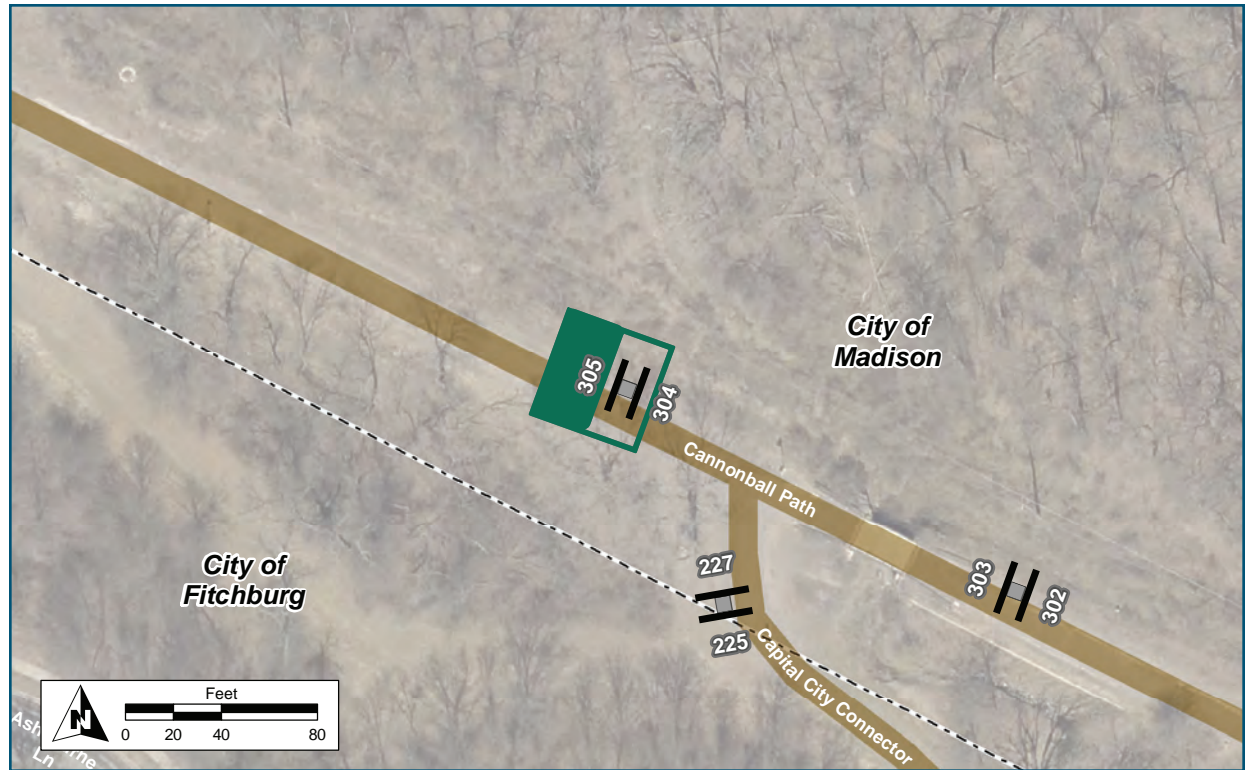
Madison



Cannonball Path

↑ Beltline Overpass

Capital City Trail →



Location

On Cannonball Path
 At West of Cap City Spur

Installation Details

Assembly Type Decision
 Jurisdiction City of Madison
 Post New
 Other Assemblies Back to Back with #304
 Sign Facing West
 Post Distance off Pavement 4 ft
 Distance from Intersection 60 ft

Placement Notes

60 ft west of intersection with path

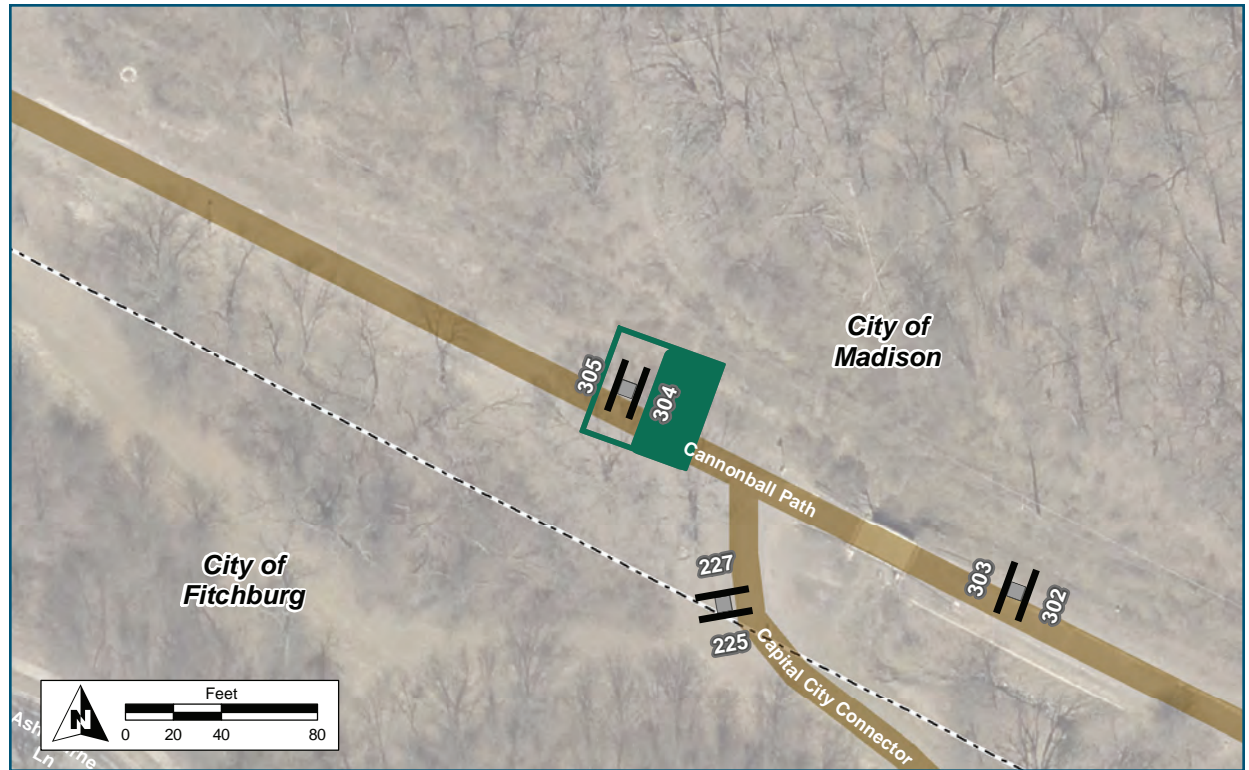
Assembly ID: 304



Trail Pass Not Required

Seminole Hwy 0.8 mi
5 min

Dunn's Marsh 1.4 mi
Bike Roundabout 8 min



Location

On Cannonball Path
At West of Cap City Spur

Installation Details

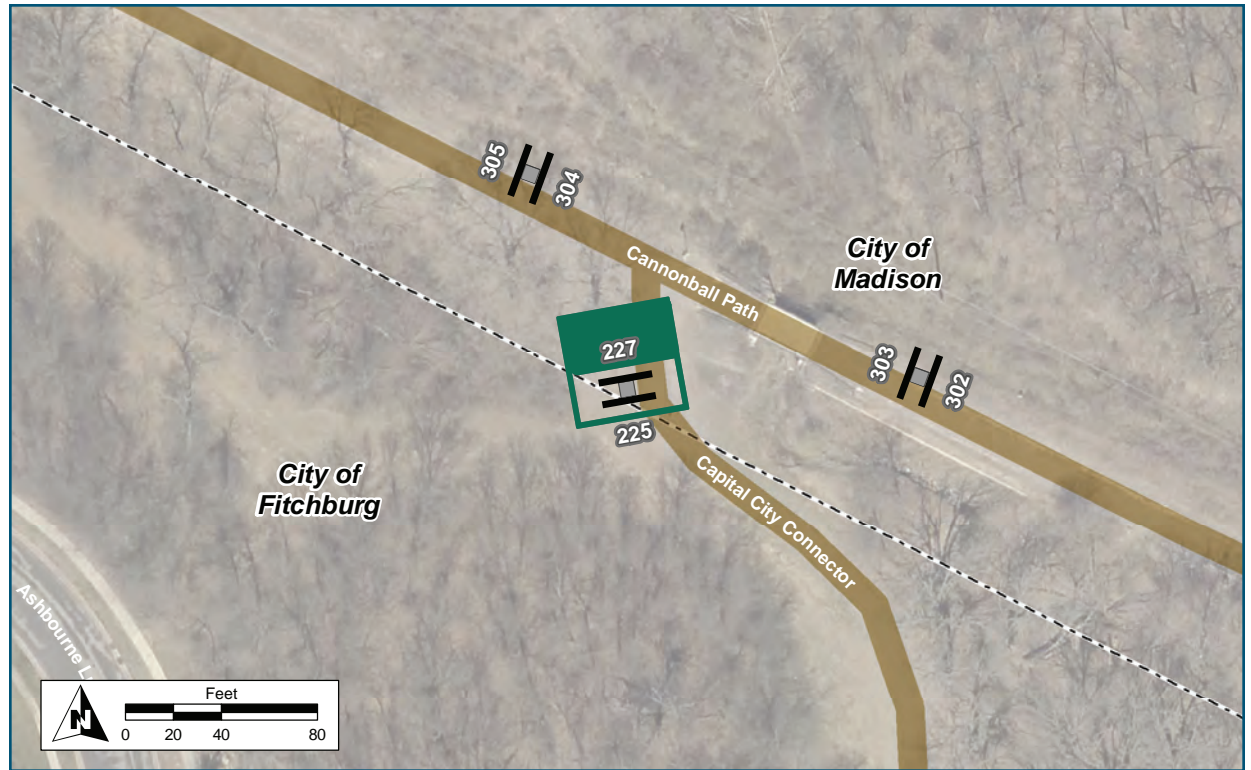
Assembly Type Confirmation
Jurisdiction City of Madison
Post Existing
Other Assemblies Back to Back with #305
Sign Facing East
Post Distance off Pavement 4 ft
Distance from Intersection 60 ft west of path junction

Placement Notes

60 ft west of intersection with path



Assembly ID: 227



Location

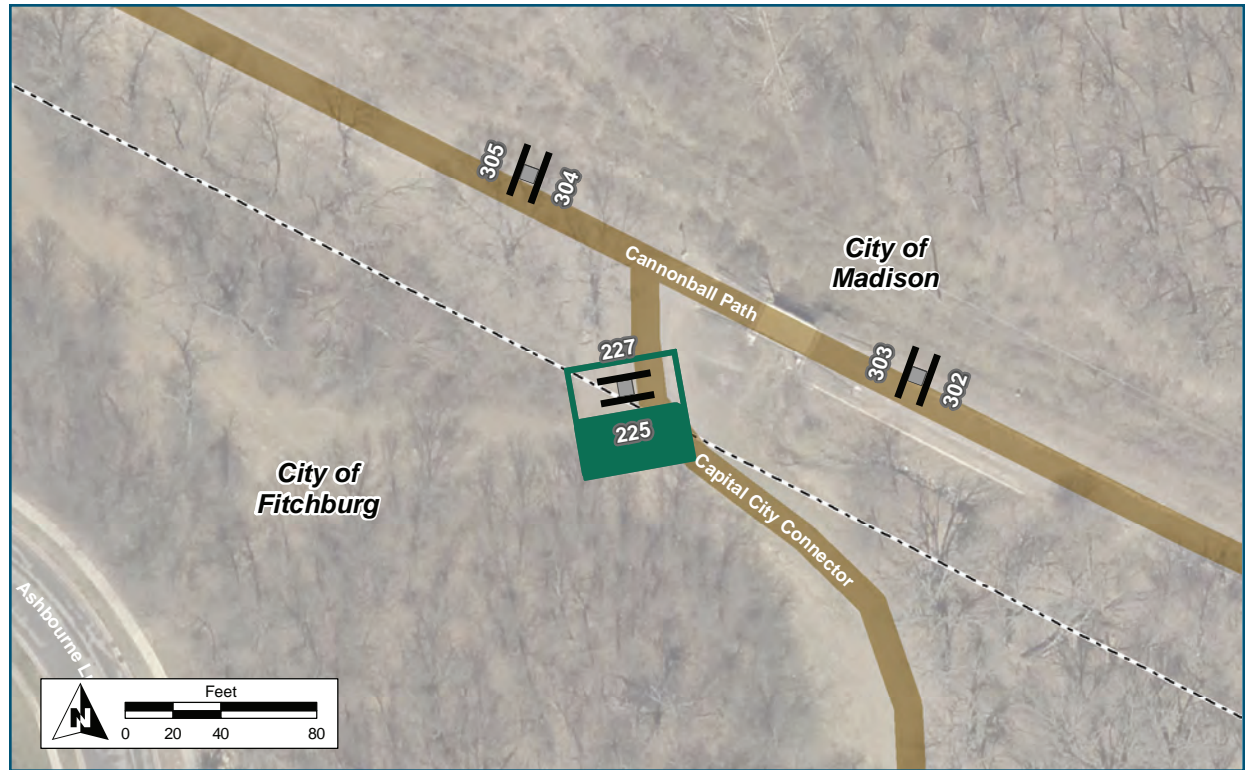
On Capital City Connector
At South of Cannonball Path

Installation Details

Assembly Type Path Access
Jurisdiction City of Madison
Post New
Other Assemblies Back to Back with #225
Sign Facing North
Post Distance off Pavement 4 ft
Distance from Intersection 40 ft south of junction with Cannonball path

Placement Notes

Assembly ID: 225



Location

On	Capital City Connector
At	South of Cannonball Path

Installation Details

Assembly Type	Decision
Jurisdiction	City of Madison
Post	New
Other Assemblies	Back to Back with #227
Sign Facing	South
Post Distance off Pavement	4 ft
Distance from Intersection	40 ft south of junction with Cannonball path

Placement Notes

--	--



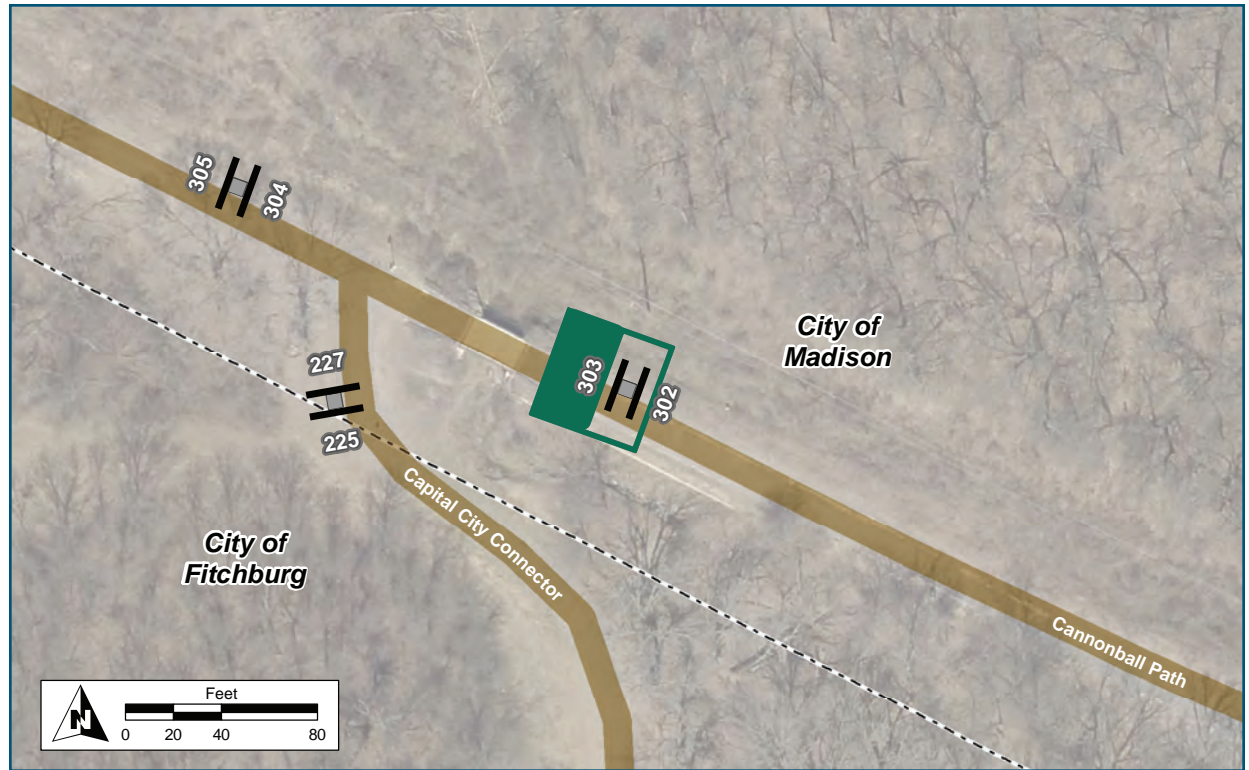
Assembly ID: 303



Trail Pass Not Required

Post Rd 0.5 mi
3 min

Dwtm Madison 4 mi
24 min



Location

On Cannonball Path
At East of Cap City Spur

Installation Details

Assembly Type Confirmation
Jurisdiction City of Madison
Post New
Other Assemblies Back to Back with #302
Sign Facing West
Post Distance off Pavement 4 ft
Distance from Intersection 100 ft east of path junction

Placement Notes

100 ft east of path junction

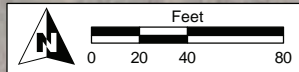


Madison

↑ Dawley Bike Hub

↑ Dunn's Marsh Bike Roundabout

← Capital City Trail



Location

On Cannonball Path
 At East of Cap City Spur

Installation Details

Assembly Type	Decision
Jurisdiction	City of Madison
Post	New
Other Assemblies	Back to Back with #303
Sign Facing	East
Post Distance off Pavement	4 ft
Distance from Intersection	100 ft east of path junction

Placement Notes

100 ft east of path junction

Assembly ID: 301



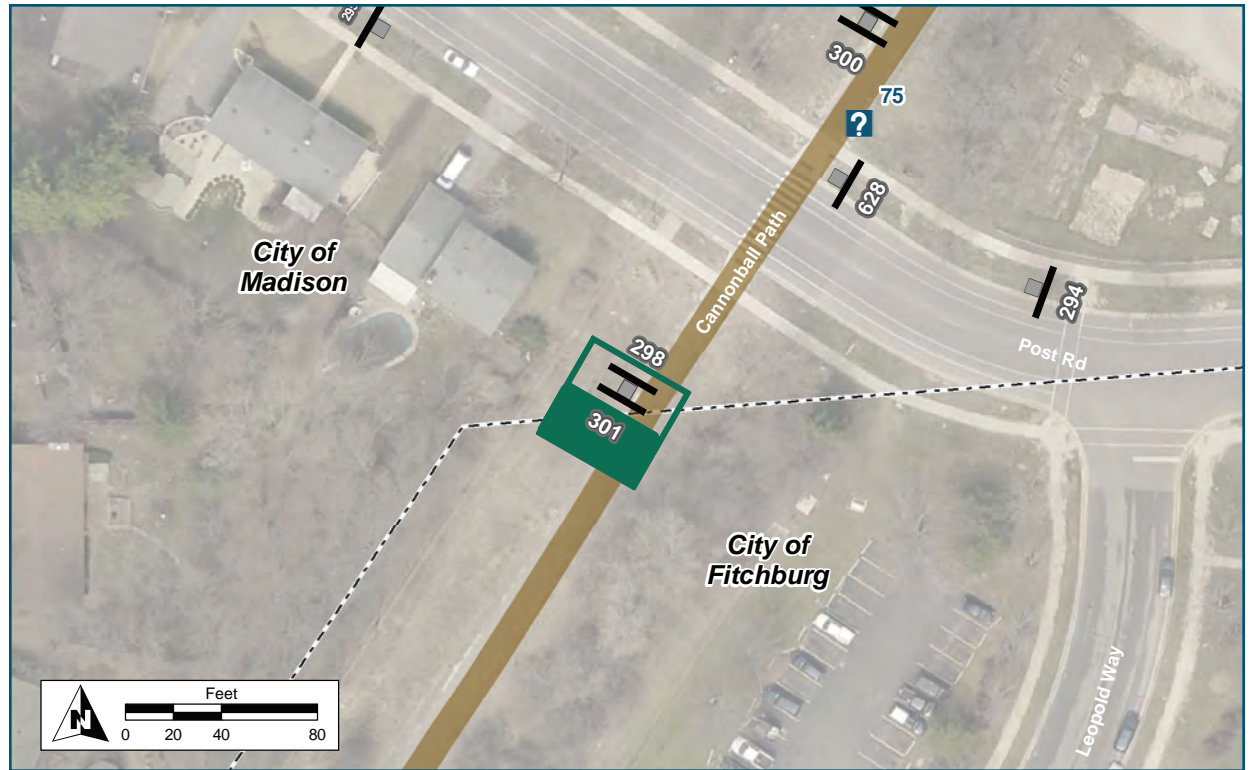
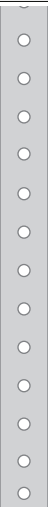
Madison

↑ Beltline Overpass

↑ Dwtm Madison

Fish Hatchery Rd →

Jenni & Kyle Preserve →



Location

On Cannonball Path
At South of Post Road

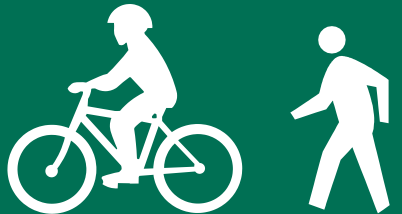
Installation Details

Assembly Type Decision
Jurisdiction City of Madison
Post New
Other Assemblies Back to back with #298
Sign Facing Southwest
Post Distance off Pavement 4 ft
Distance from Intersection 50-60 ft from sidewalk

Placement Notes



Madison

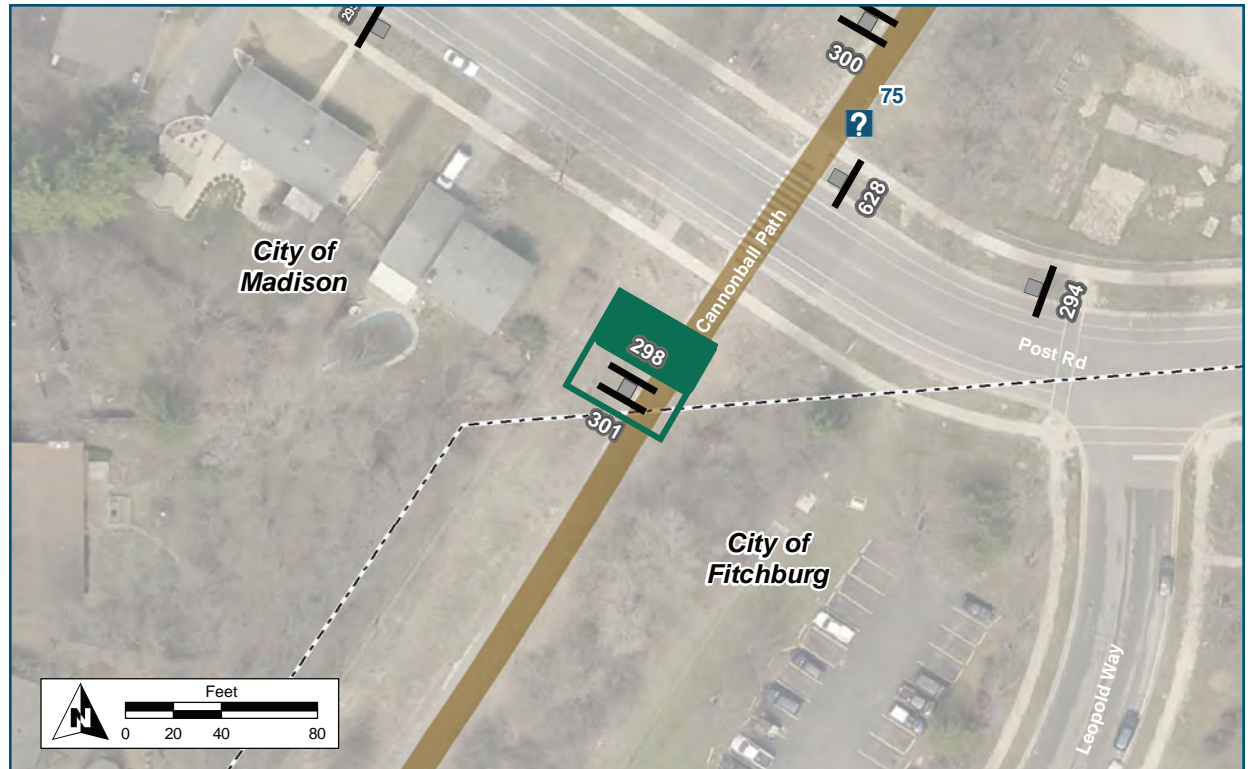


Cannonball Path

Trail Pass Not Required

Capital City Trail 0.7 mi
4 min

Dunn's Marsh Roundabout 2 mi
12 min



Location

On Cannonball Path
At South of Post Road

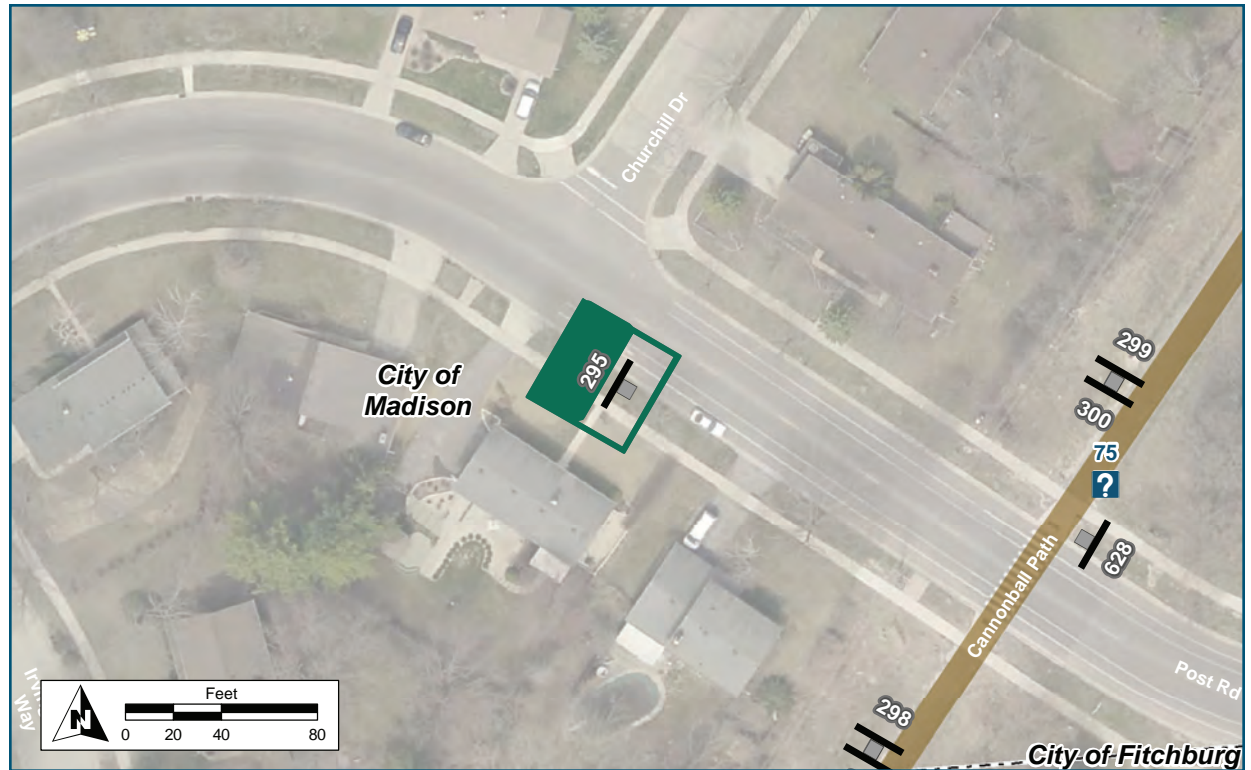
Installation Details

Assembly Type	Confirmation
Jurisdiction	City of Madison
Post	New
Other Assemblies	Back to Back with #301
Sign Facing	Northwest
Post Distance off Pavement	4 ft
Distance from Intersection	50-60 ft from sidewalk

Placement Notes



Assembly ID: 295



Location

On	Post Road
At	West of Cannonball Path

Installation Details

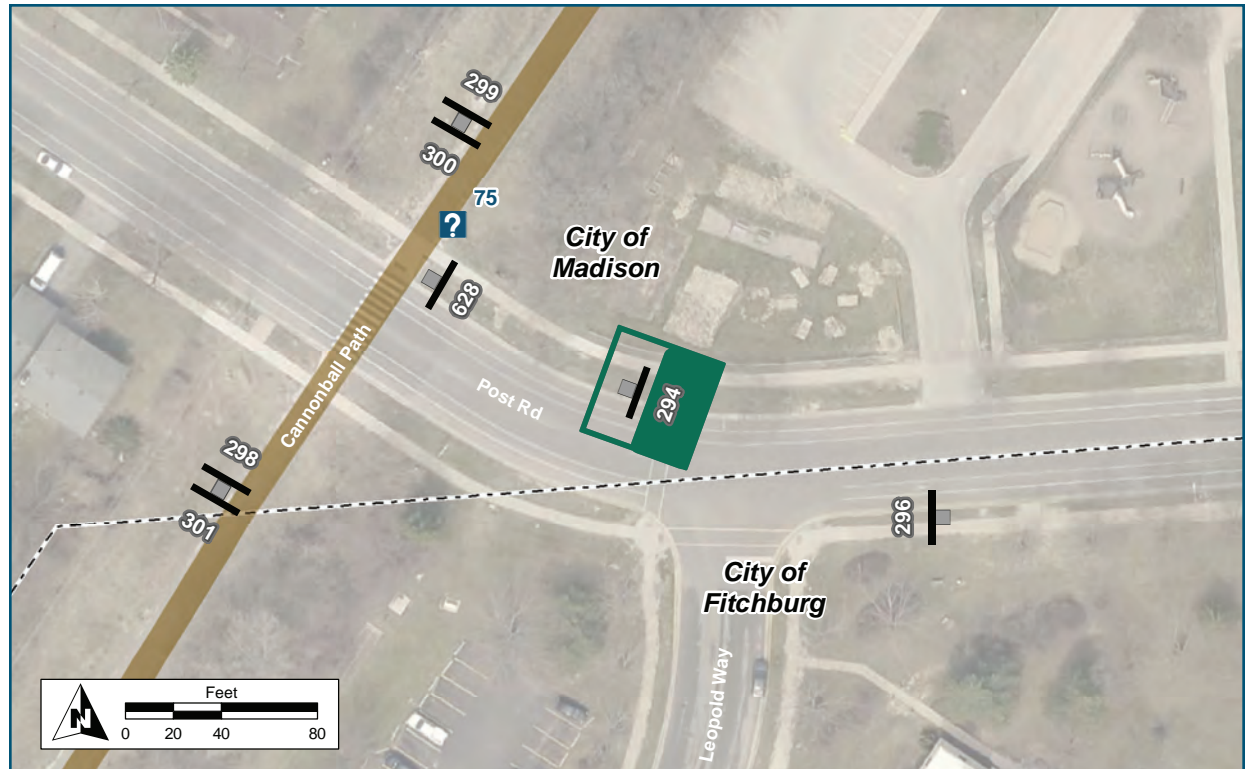
Assembly Type	Decision
Jurisdiction	City of Madison
Post	New
Other Assemblies	None
Sign Facing	West
Post Distance off Pavement	4 ft from curb
Distance from Intersection	170 ft west of path intersection

Placement Notes

In advance of existing school crossing sign.



Assembly ID: 294



Location

On	Post Road
At	Cannonball Path

Installation Details

Assembly Type	Decision
Jurisdiction	City of Madison
Post	New
Other Assemblies	None
Sign Facing	East
Post Distance off Pavement	4 ft from curb
Distance from Intersection	100 ft from Cannonball Path

Placement Notes

Place 10 ft west of crosswalk ramp for Leopold way, in front of tree.

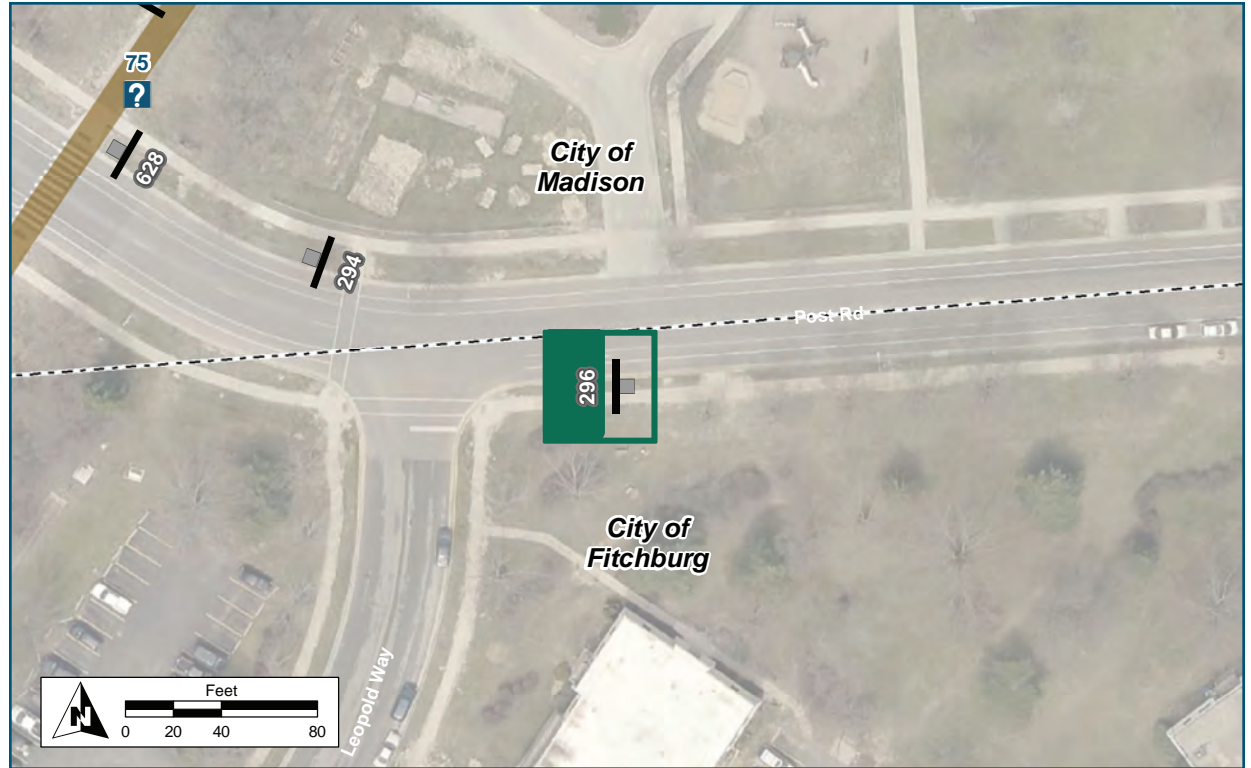


Assembly ID: 296



Fish Hatchery Road 0.5 mi
3 min

Jenni & Kyle Preserve 1.2 mi
7 min



Location

On Post Road
At Cannonball Path

Installation Details

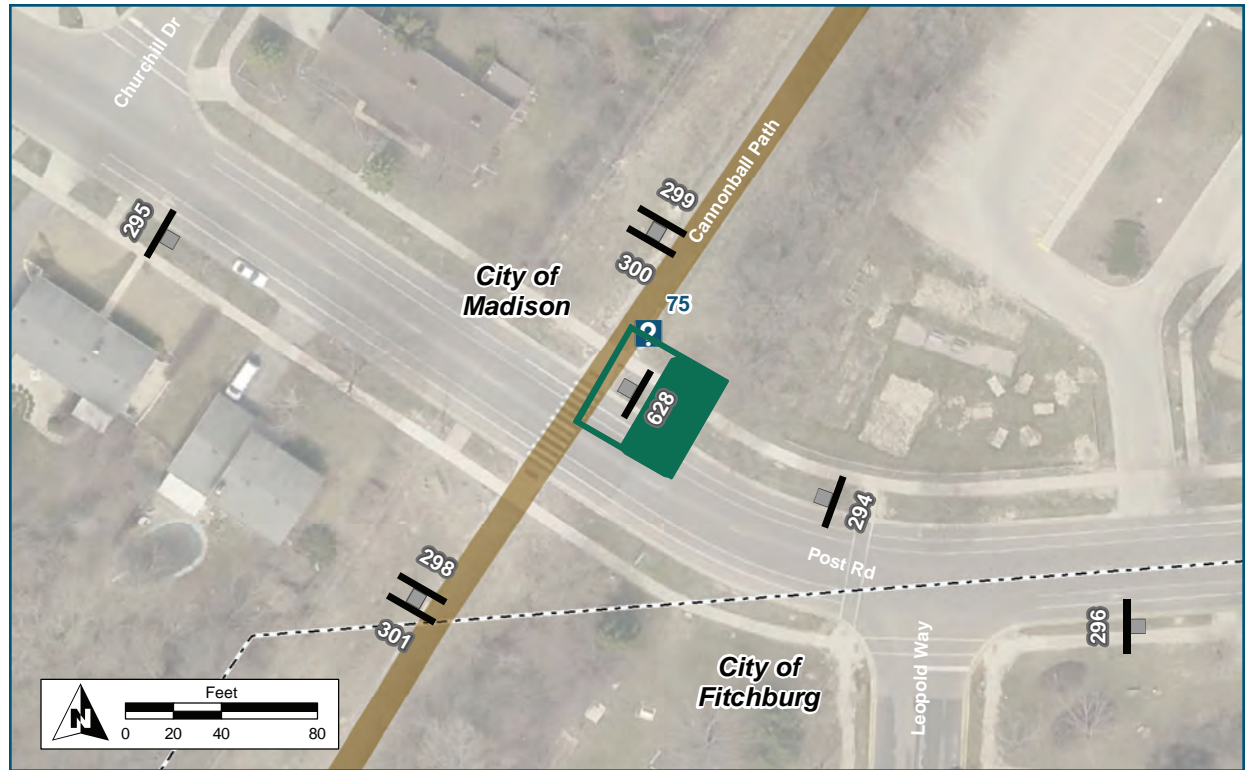
Assembly Type Confirmation
Jurisdiction Fitchburg
Post Existing
Other Assemblies Pedestrian Crossing Sign
Sign Facing West
Post Distance off Pavement 4 ft from curb
Distance from Intersection 60 ft from Leopold Way

Placement Notes

Place under existing BIKE LANE sign panel



See Photo and
Placement Notes



Location

On Post Road
At Cannonball Path

Installation Details

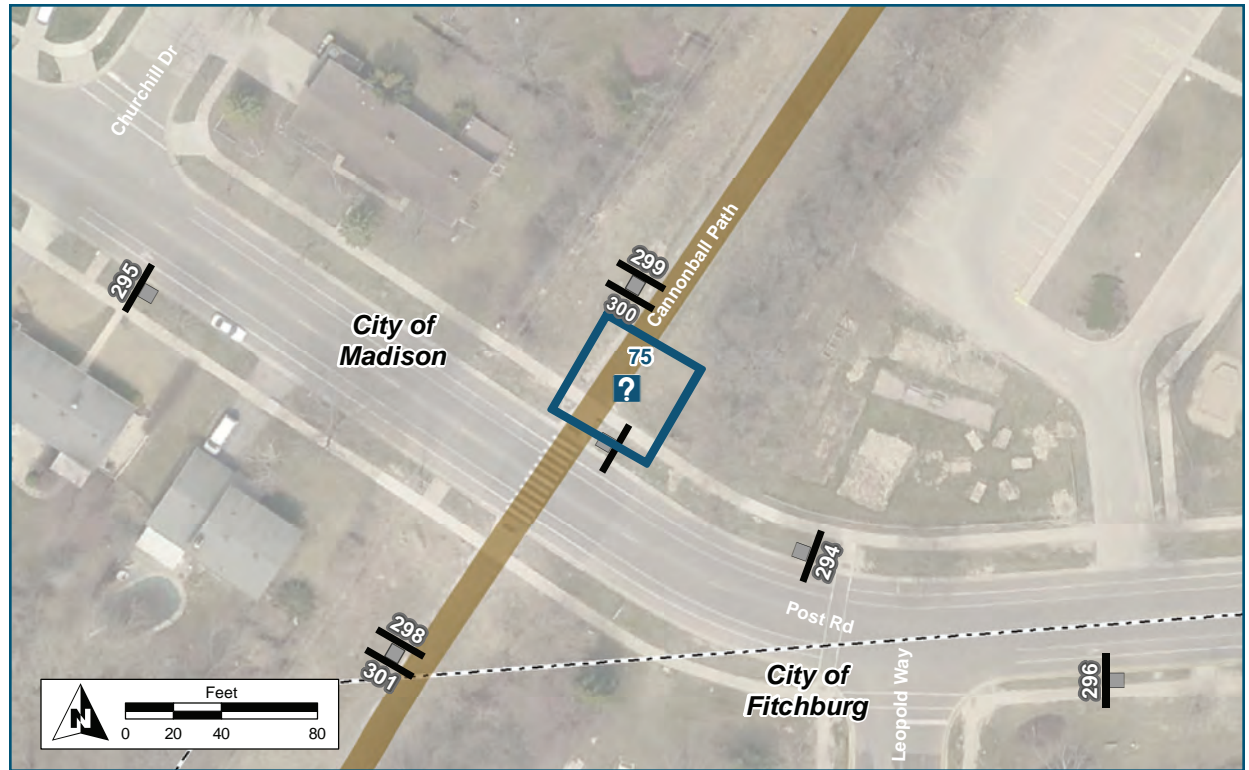
Assembly Type	Streetname
Jurisdiction	Madison
Post	Existing
Other Assemblies	Bike/Ped Crossing Sign
Sign Facing	West
Post Distance off Pavement	3 ft from curb
Distance from Intersection	5 ft from path

Placement Notes

Existing Assembly to Remain



See Photo and
Placement Notes



Location

On Cannonball Path
At North of Post Road

Installation Details

Kiosk Type	Map Kiosk
Jurisdiction	City of Madison
Existing or Proposed	Existing
Other Amenities	None
Sign Facing	West
Distance off Pavement	4 ft
Distance from Intersection	5 ft north of sidewalk

Placement Notes

Existing Kiosk Map to Remain



Assembly ID: 300



Madison



Cannonball Path

Trail Pass Not Required

Beltline 0.7 mi
Overpass 4 min

Dwtm Madison 3.5 mi
21 min



Location

On Cannonball Path
At North of Post Road

Installation Details

Assembly Type	Confirmation
Jurisdiction	City of Madison
Post	New
Other Assemblies	Back to Back with #299
Sign Facing	Southwest
Post Distance off Pavement	4 ft
Distance from Intersection	50-60 ft from sidewalk

Placement Notes



Madison

↑ Capital City Trail 

↑ Dunn's Marsh Bike Roundabout

← Fish Hatchery Rd

← Jenni & Kyle Preserve 



Location

On Cannonball Path
At North of Post Road

Installation Details

Assembly Type Decision
Jurisdiction City of Madison
Post New
Other Assemblies Back to Back with #300
Sign Facing Northwest
Post Distance off Pavement 4 ft
Distance from Intersection 50-60 ft from sidewalk

Placement Notes



Location

On Cannonball Path
At Leopold Elementary path

Installation Details

Assembly Type Decision
Jurisdiction City of Madison
Post New
Other Assemblies Back to Back with #291,
Perpendicular with #293
Sign Facing Southwest
Post Distance off Pavement 4 ft west of path
Distance from Intersection 0 ft

Placement Notes





Location	
On	Cannonball Path
At	Leopold Elementary Path
Installation Details	
Assembly Type	Decision
Jurisdiction	City of Madison
Post	New
Other Assemblies	Perpendicular with #291 and #292
Sign Facing	Southeast
Post Distance off Pavement	4 ft west of path
Distance from Intersection	0 ft
Placement Notes	



Location

On Cannonball Path
 At Leopold Elementary path

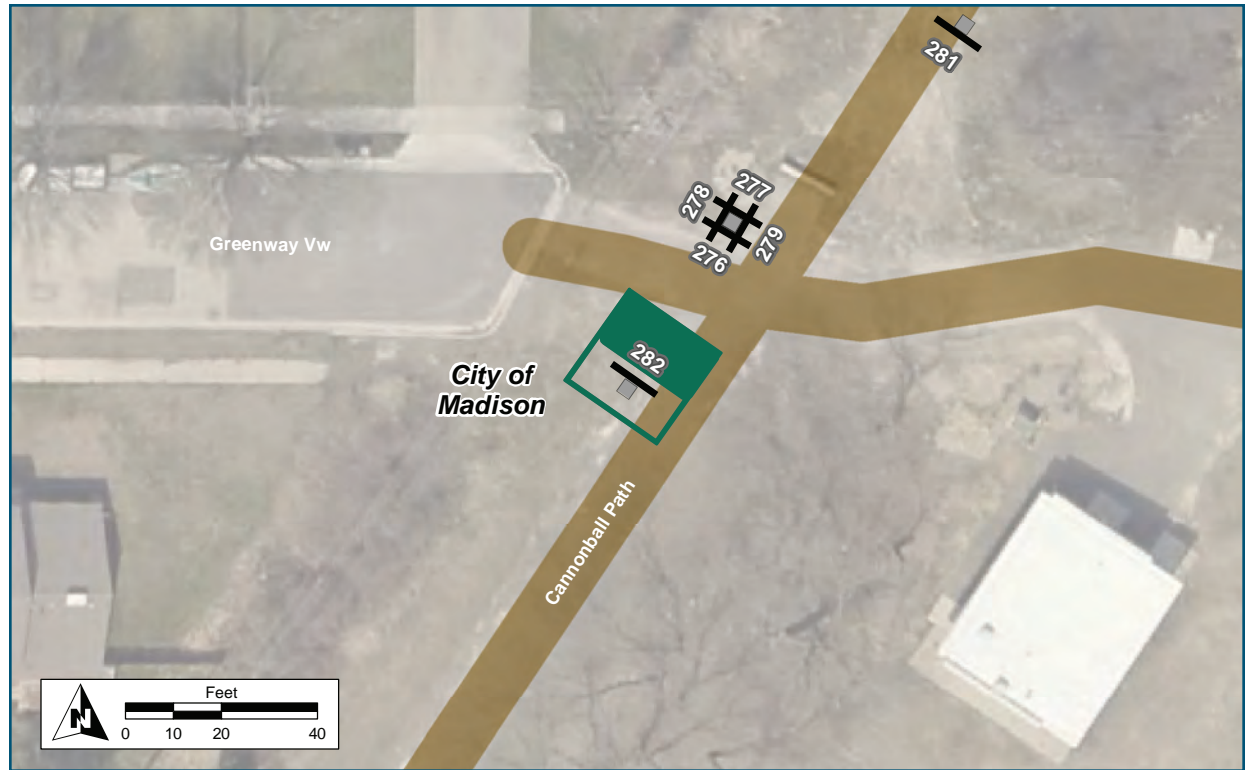
Installation Details

Assembly Type Decision
 Jurisdiction City of Madison
 Post New
 Other Assemblies Back to Back with #292,
 Perpendicular with #293
 Sign Facing Northwest
 Post Distance off Pavement 4 ft west of path
 Distance from Intersection 0 ft

Placement Notes



See Placement Notes



Location

On Cannonball Path
At South of Greenway View

Installation Details

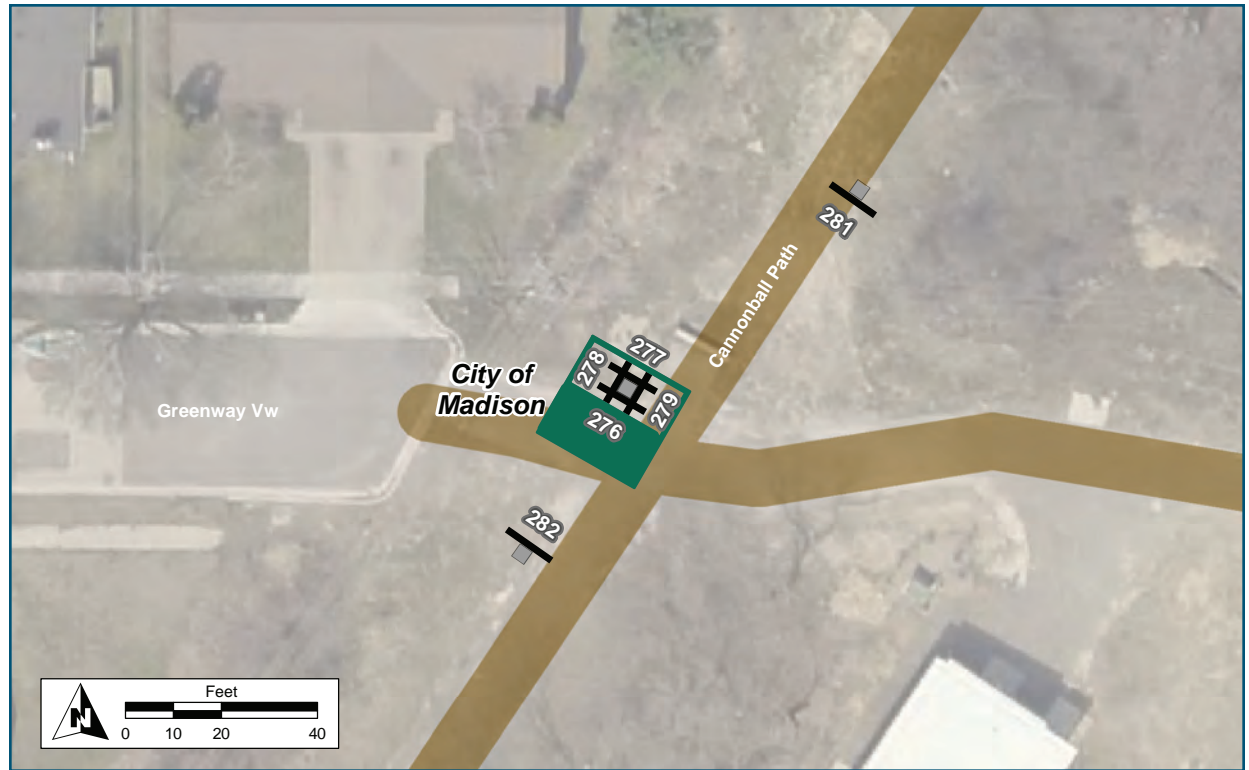
Assembly Type	Existing Etiquette
Jurisdiction	City of Madison
Post	Existing
Other Assemblies	None
Sign Facing	Northwest
Post Distance off Pavement	4-5 ft
Distance from Intersection	15-25 ft

Placement Notes

Existing Assembly to Remain



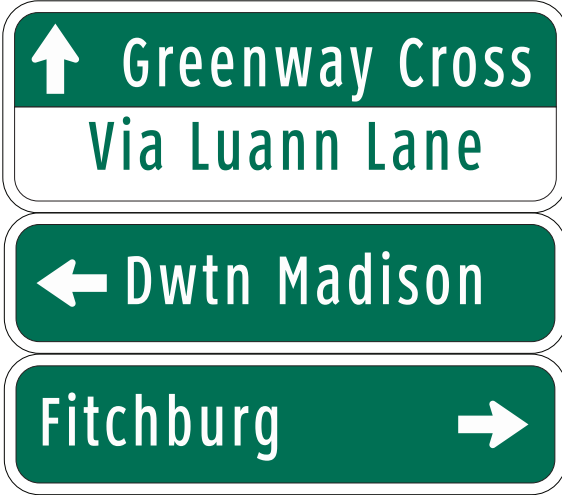
Assembly ID: 276



Location	
On	Cannonball Path
At	Greenway View
Installation Details	
Assembly Type	Decision
Jurisdiction	City of Madison
Post	Existing Light Post
Other Assemblies	Back to Back with #277, Perpendicular to #278 and #279
Sign Facing	Southwest
Post Distance off Pavement	5-8 ft
Distance from Intersection	5-8 ft
Placement Notes	



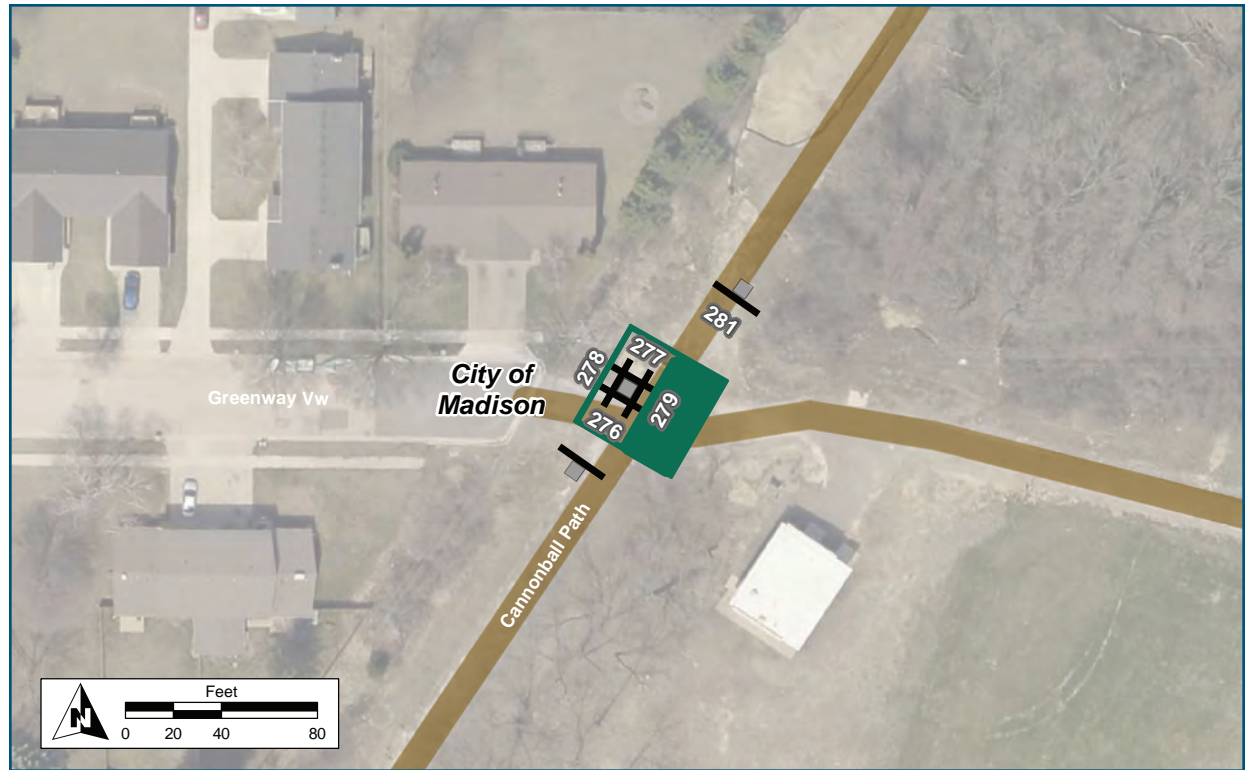
Assembly ID: 278



Location	
On	Cannonball Path
At	Greenway View
Installation Details	
Assembly Type	Decision
Jurisdiction	City of Madison
Post	Existing Light Post
Other Assemblies	Back to Back with #279, Perpendicular with #276 and #277
Sign Facing	West
Post Distance off Pavement	5-8 ft
Distance from Intersection	5-8 ft
Placement Notes	
Mount below existing Street Name Signs	



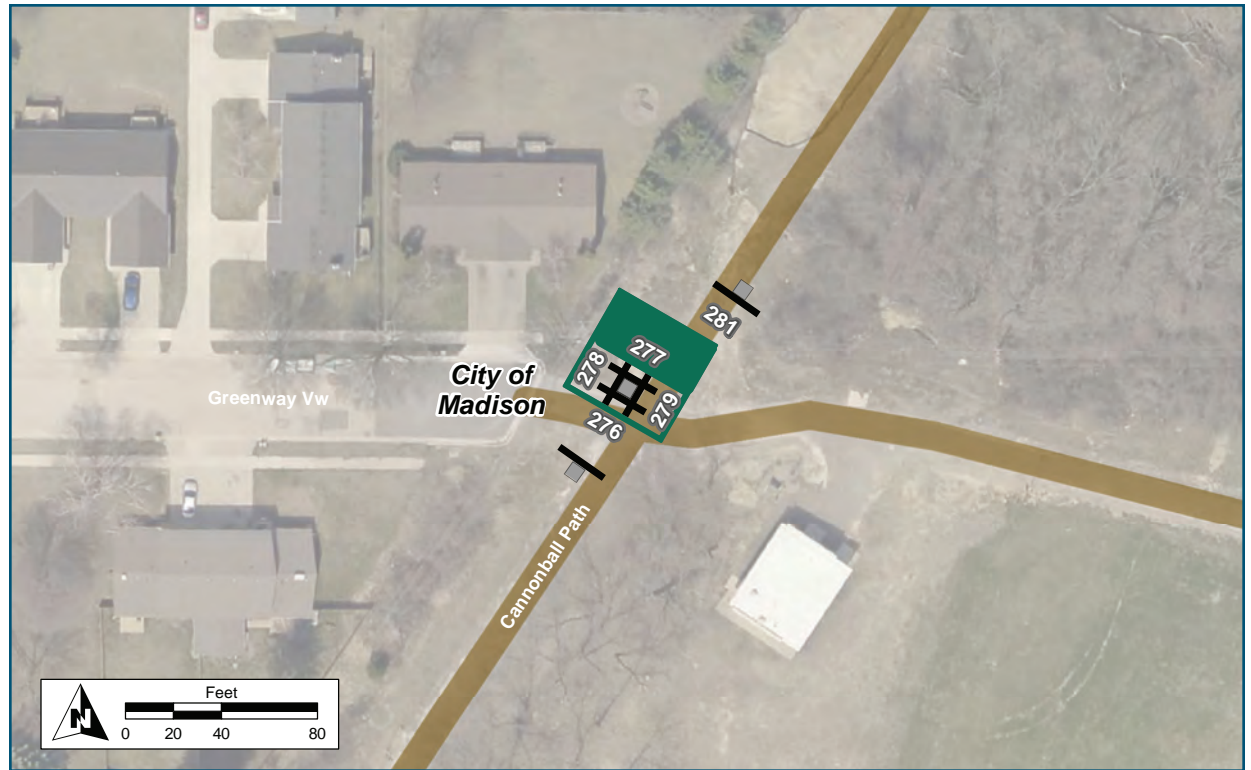
Assembly ID: 279



Location	
On	Cannonball Path
At	Greenway View
Installation Details	
Assembly Type	Decision
Jurisdiction	City of Madison
Post	Existing Light Post
Other Assemblies	Back to Back with #278, Perpendicular with #276 and #277
Sign Facing	East
Post Distance off Pavement	5-8 ft from path
Distance from Intersection	5-8 ft from path junction
Placement Notes	



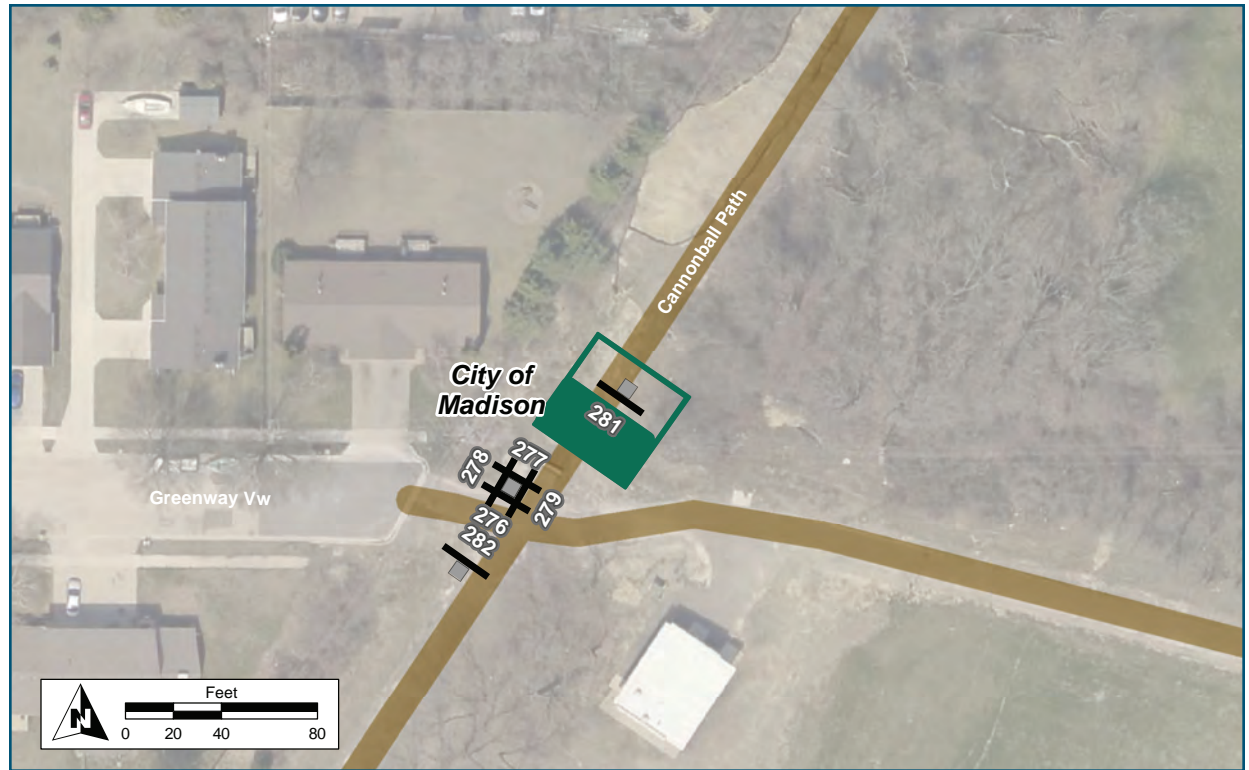
Assembly ID: 277



Location	
On	Cannonball Path
At	Greenway View
Installation Details	
Assembly Type	Decision
Jurisdiction	City of Madison
Post	Existing Light Post
Other Assemblies	Back to Back with #276, Perpendicular with #278, #279
Sign Facing	Northwest
Post Distance off Pavement	5-8 ft
Distance from Intersection	5-8 ft
Placement Notes	



See Placement Notes



Location

- On Cannonball Path
- At North of Greenway View

Installation Details

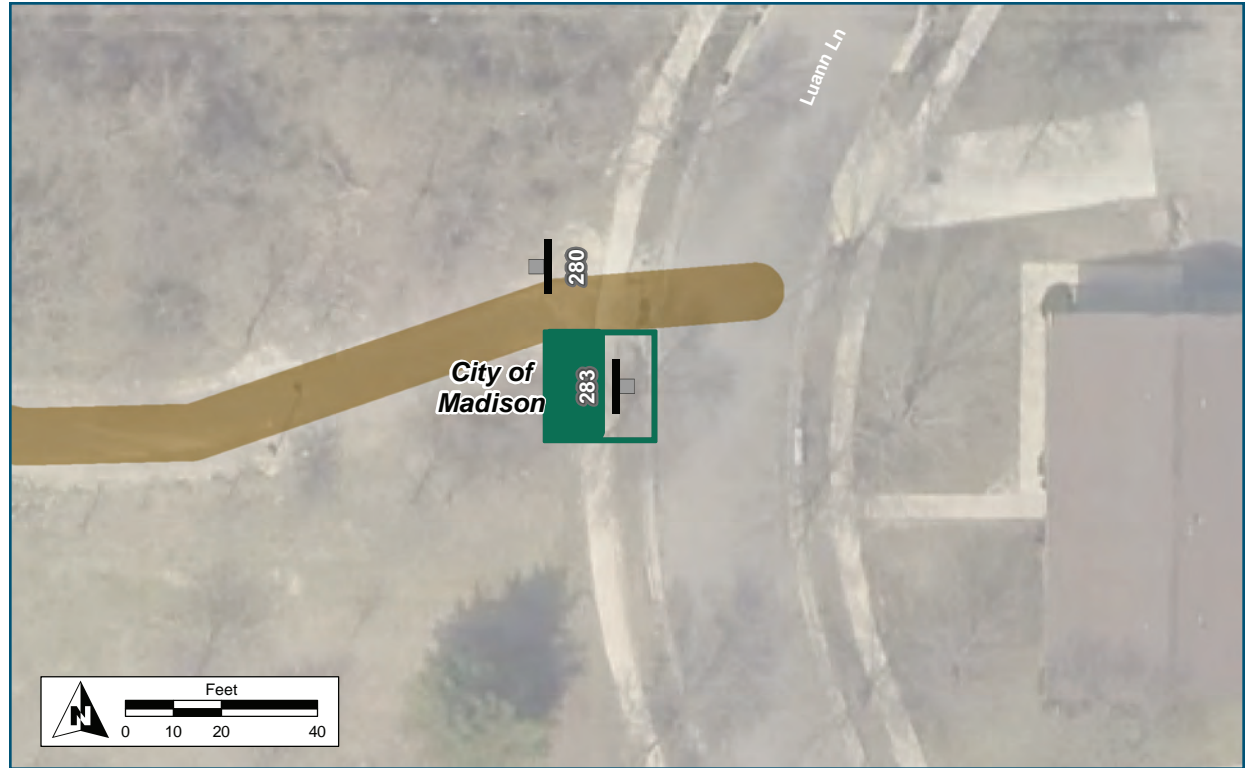
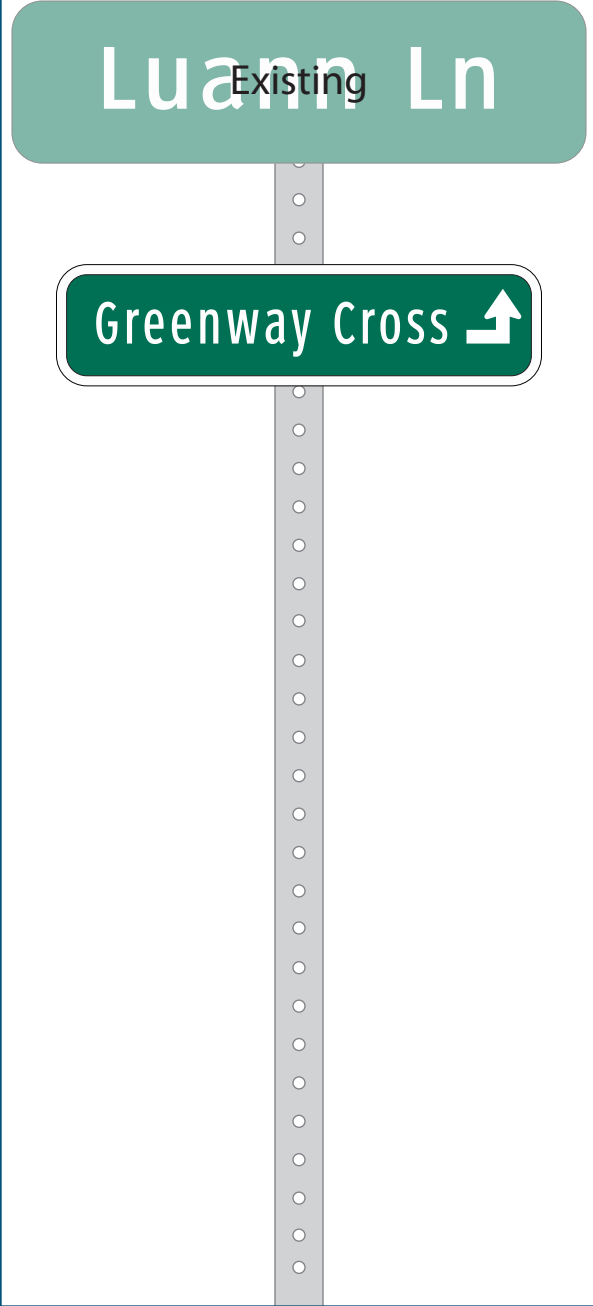
Assembly Type	Existing Etiquette
Jurisdiction	City of Madison
Post	Existing
Other Assemblies	None
Sign Facing	Southwest
Post Distance off Pavement	3-5 ft
Distance from Intersection	50-70 ft

Placement Notes

Remove allowed uses panel (says ordinary biking not recommended)



Assembly ID: 283



Location	
On	Luann Lane
At	Leopold Park Path Spur
Installation Details	
Assembly Type	Path Exit
Jurisdiction	City of Madison
Post	Existing
Other Assemblies	Back to Back with "DO NOT ENTER EXCEPT BIKES" sign
Sign Facing	West
Post Distance off Pavement	4 ft from ramp
Distance from Intersection	3 ft from curbside
Placement Notes	
Place fingerboard sign on the back of "DO NOT ENTER EXCEPT BIKES" sign.	



Assembly ID: 280



Location

On Leopold Park Path Spur

At Luann Lane

Installation Details

Assembly Type Path Access

Jurisdiction City of Madison

Post New

Other Assemblies None

Sign Facing East

Post Distance off Pavement 4 ft from path

Distance from Intersection 10 ft from sidewalk

Placement Notes



Assembly ID: 275



Location

On Cannonball Path
 At South of Overpass

Installation Details

Assembly Type Decision
 Jurisdiction City of Madison
 Post New
 Other Assemblies Back to Back with #274
 Sign Facing Southwest
 Post Distance off Pavement 4 ft
 Distance from Intersection 50-60 ft

Placement Notes



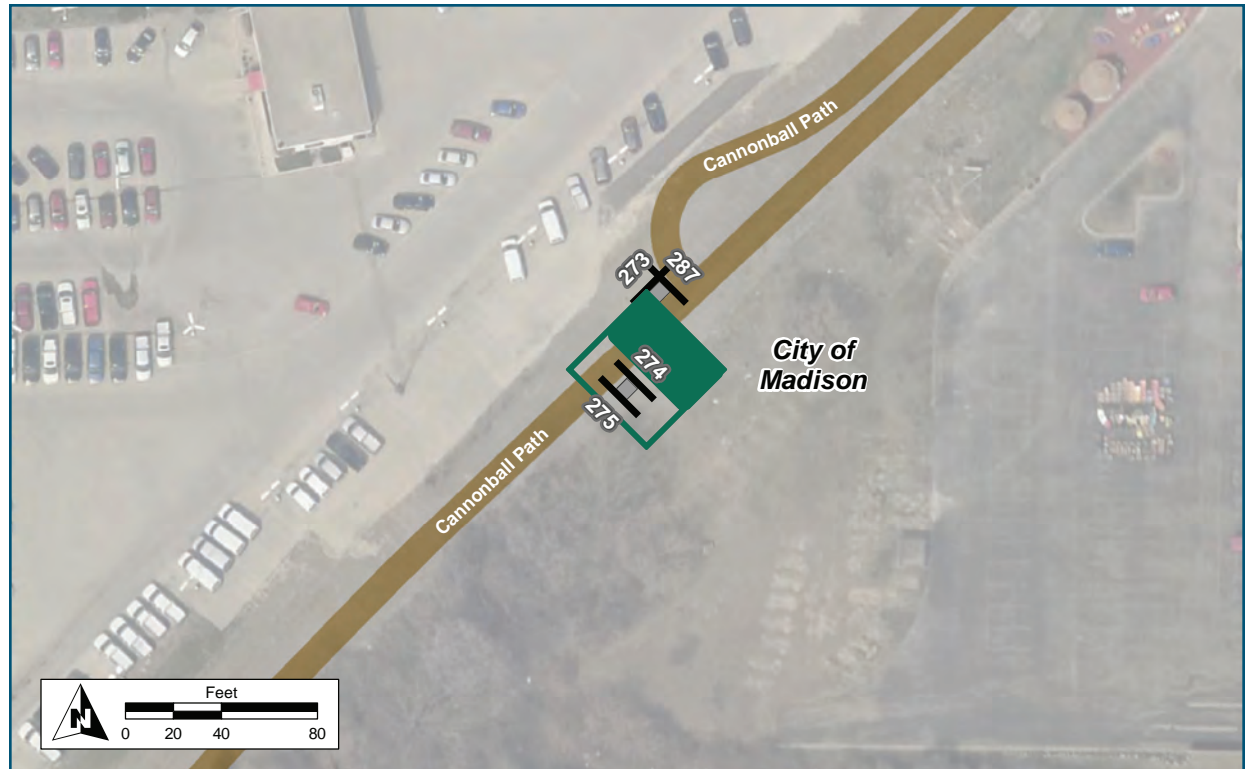
Assembly ID: 274



Post Rd 0.6 mi
4 min

Capital City Trail 1.4 mi
8 min

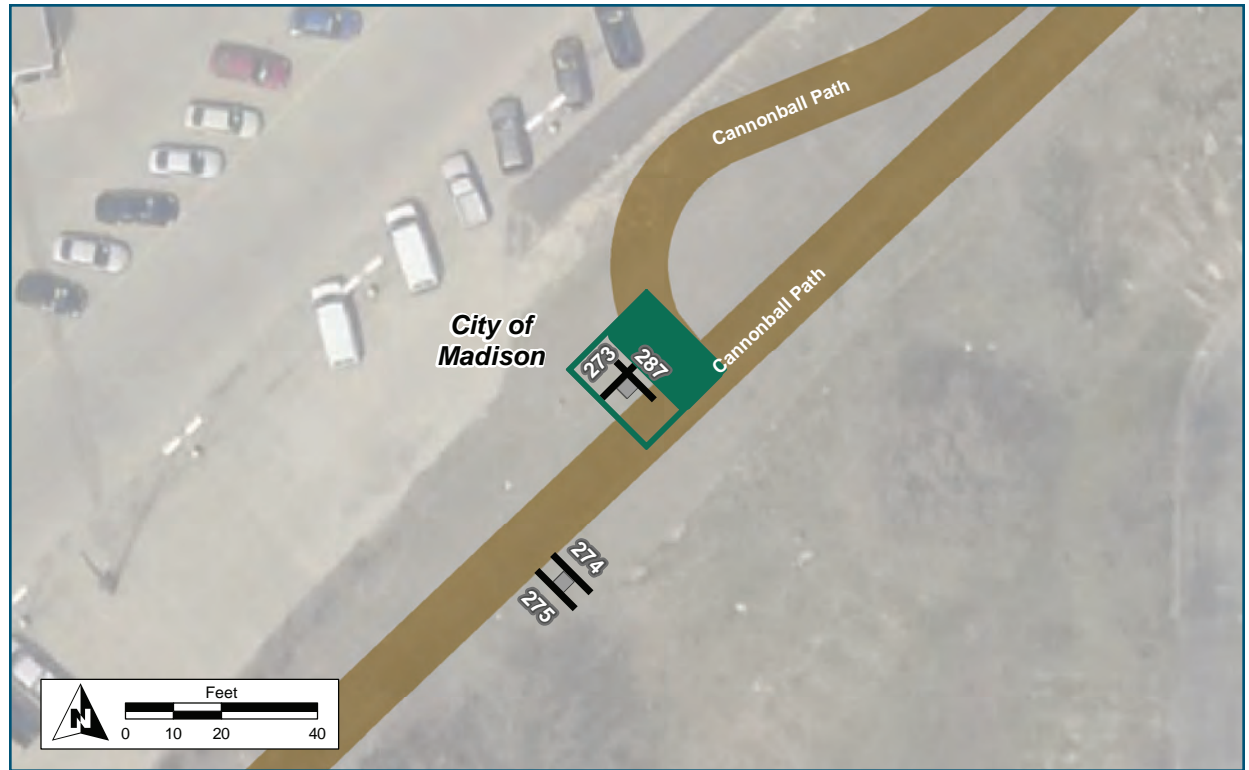
Dunn's Marsh Roundabout 2.6 mi
16 min



Location	
On	Cannonball Path
At	South of Overpass
Installation Details	
Assembly Type	Confirmation
Jurisdiction	City of Madison
Post	New
Other Assemblies	Back to Back with #275
Sign Facing	Northwest
Post Distance off Pavement	4 ft
Distance from Intersection	50-60 ft from path junction
Placement Notes	



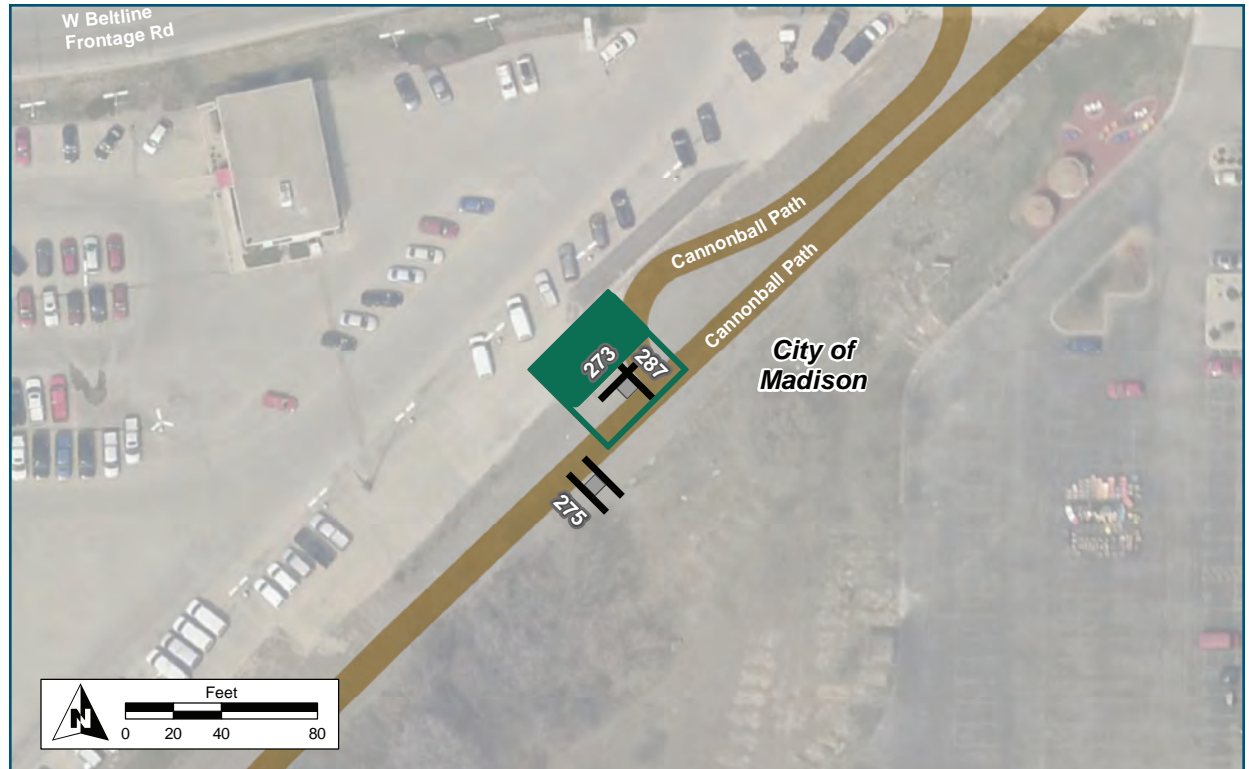
Assembly ID: 287



Location	
On	Cannonball Path
At	South of Overpass
Installation Details	
Assembly Type	Decision
Jurisdiction	City of Madison
Post	New
Other Assemblies	Perpendicular to #273
Sign Facing	Northeast
Post Distance off Pavement	4 ft from path
Distance from Intersection	4 ft from path junction
Placement Notes	
Place the post so that it will be visible to a bicyclist on the bridge, 100 ft from the sign.	



Assembly ID: 273



Location

On	Cannonball Path
At	South of Overpass

Installation Details

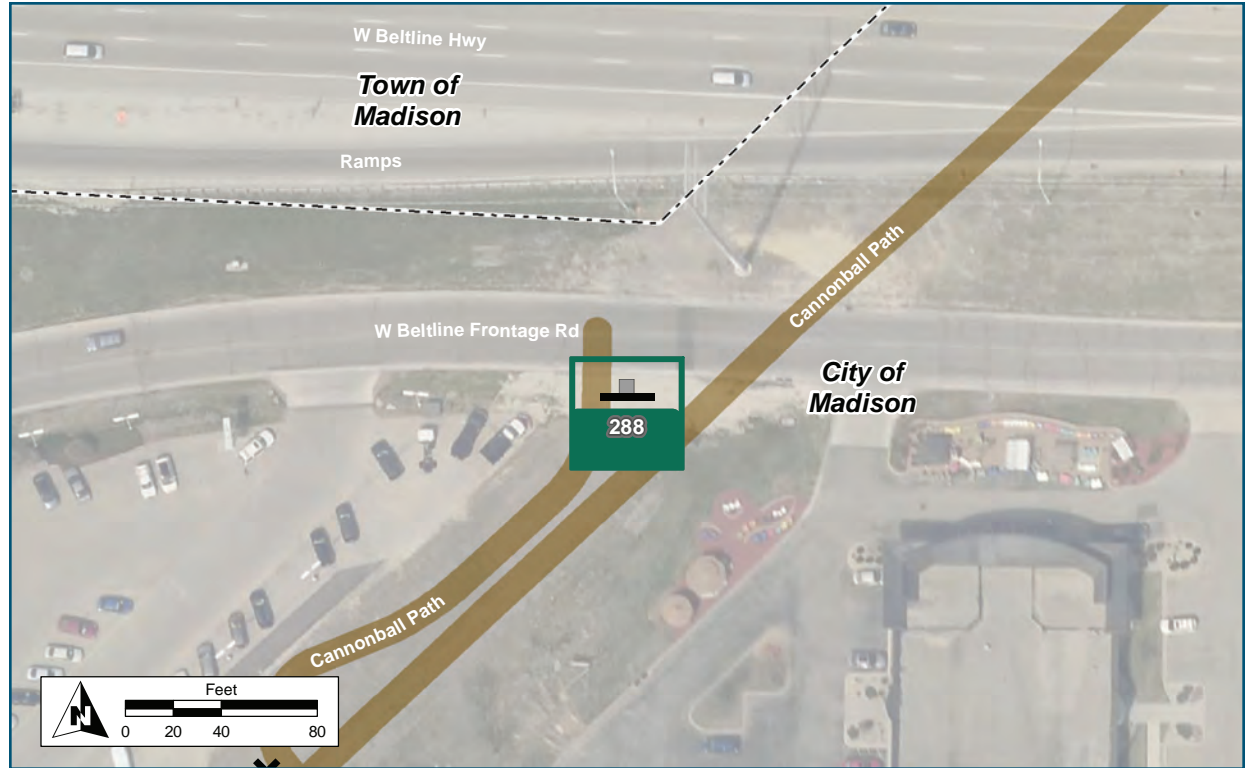
Assembly Type	Decision
Jurisdiction	City of Madison
Post	New
Other Assemblies	Perpendicular to #287
Sign Facing	Northwest
Post Distance off Pavement	4 ft from path
Distance from Intersection	4 ft from path junction

Placement Notes

--	--



Assembly ID: 288



Location

On Cannonball Spur
At W Beltline Frontage Road

Installation Details

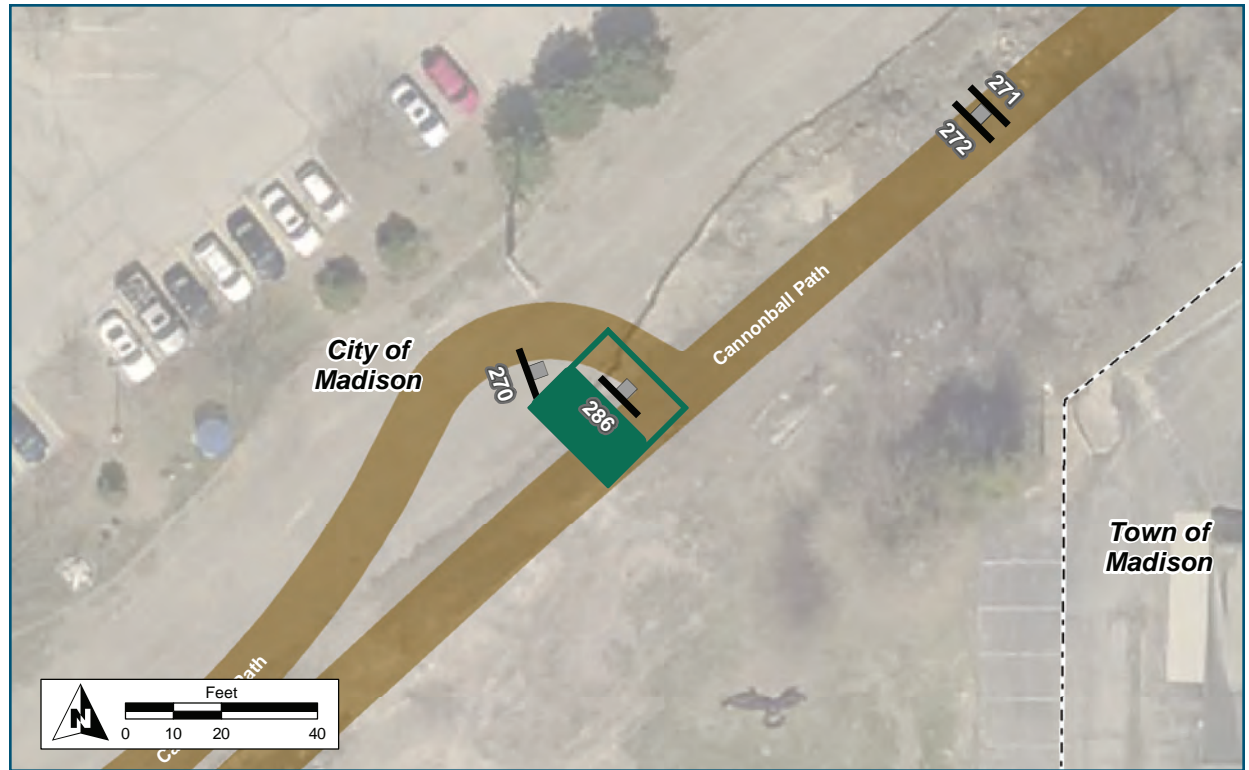
Assembly Type	Streetname
Jurisdiction	City of Madison
Post	Existing
Other Assemblies	Yellow Pedestrian warning panels
Sign Facing	South
Post Distance off Pavement	Existing post
Distance from Intersection	Existing post

Placement Notes

No change to existing sign assembly.



Assembly ID: 286



Location

On Cannonball Path
At North of Overpass

Installation Details

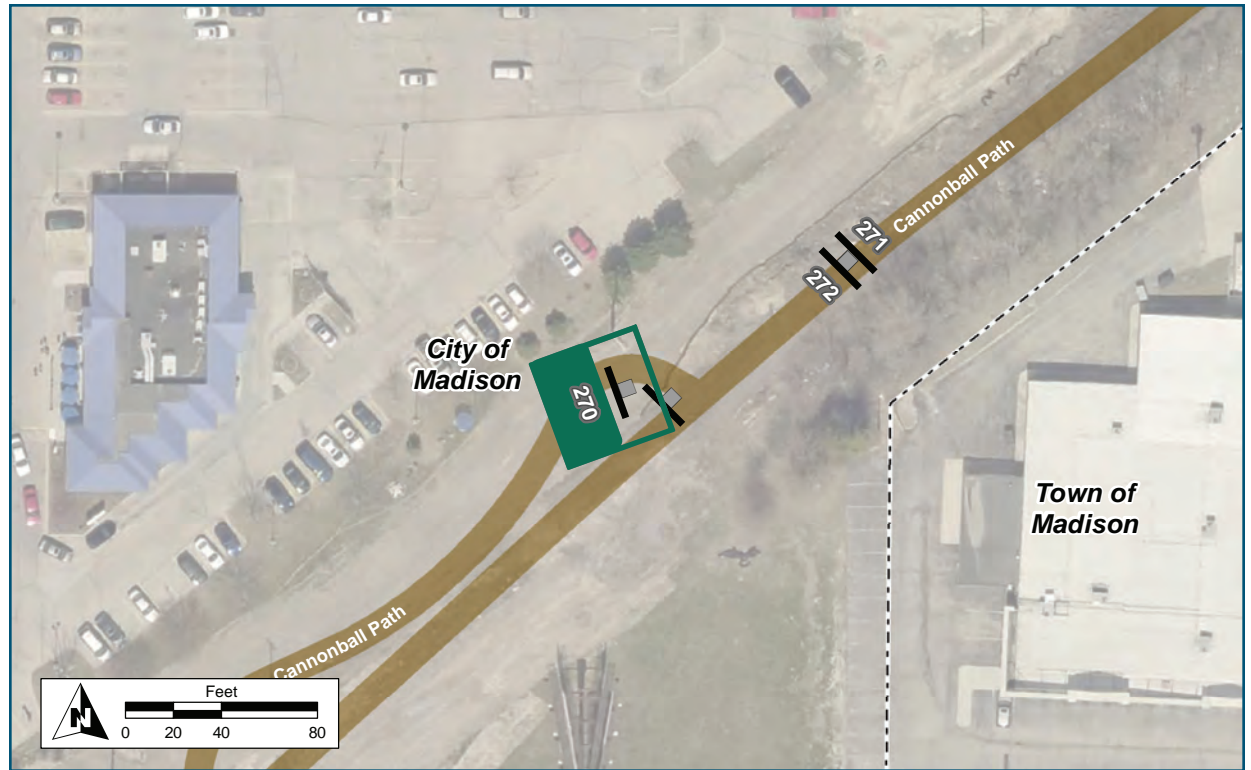
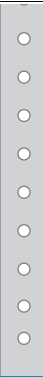
Assembly Type	Decision
Jurisdiction	City of Madison
Post	New
Other Assemblies	None
Sign Facing	Southwest
Post Distance off Pavement	3 ft from Cannonball path
Distance from Intersection	4 ft from spur path

Placement Notes

Place the post so that it will be visible to a bicyclist on the bridge, 100 feet from the sign.



Assembly ID: 270

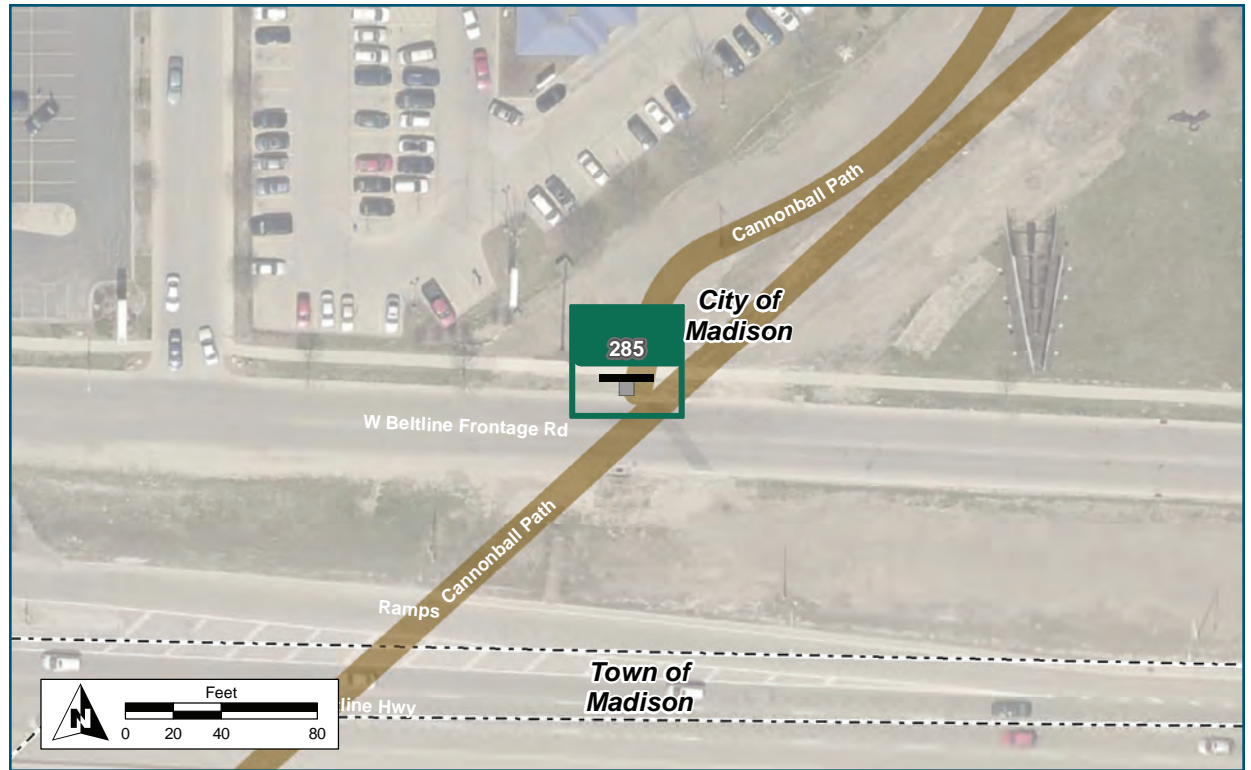


Location	
On	Cannonball Spur
At	Cannonball Overpass
Installation Details	
Assembly Type	Decision
Jurisdiction	City of Madison
Post	New
Other Assemblies	None
Sign Facing	Southwest
Post Distance off Pavement	4 ft
Distance from Intersection	30 ft
Placement Notes	
Place the post so it will be visible to a bicyclist riding up the path spur, 100 ft from the sign.	



Assembly ID: 285

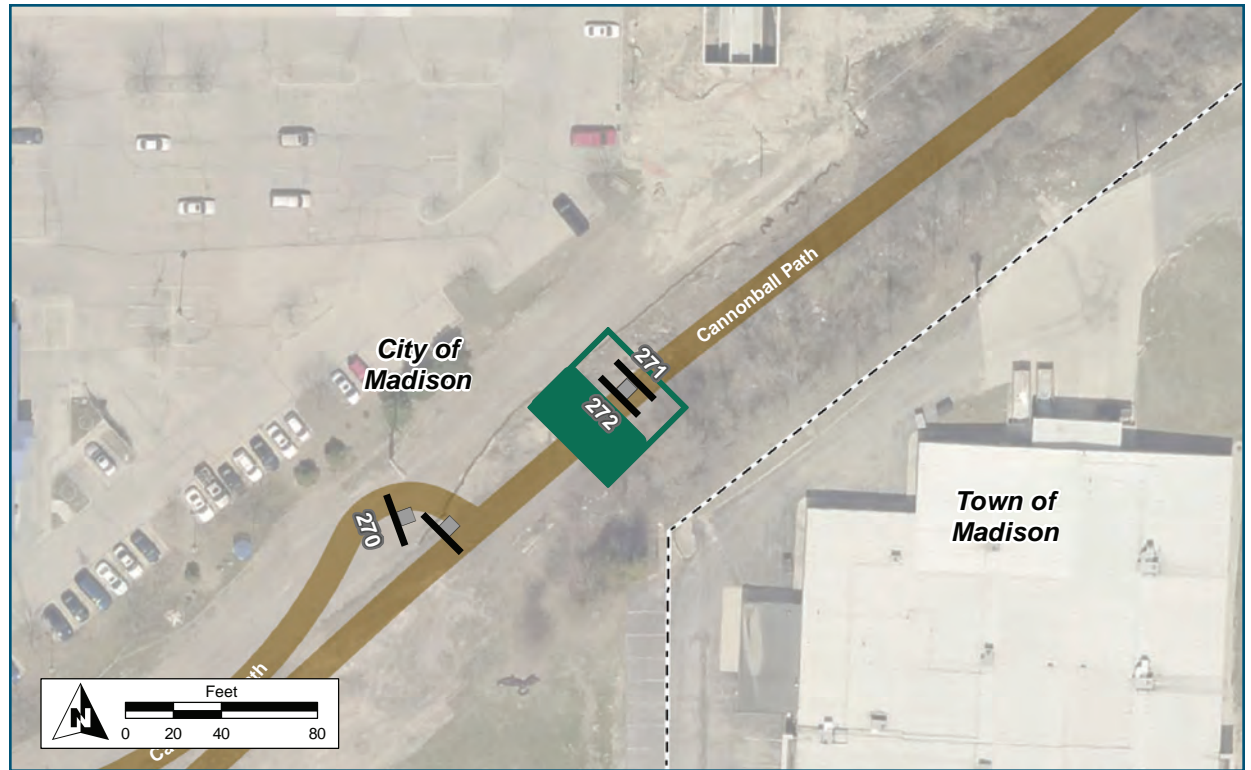
W Beltline Frontage Rd Existing



Location	
On	Cannonball Path
At	W Beltline Frontage Road
Installation Details	
Assembly Type	Path Exit
Jurisdiction	City of Madison
Post	Existing
Other Assemblies	Perpendicular to yellow diamond path crossing warning sign
Sign Facing	North
Post Distance off Pavement	4 ft from curb
Distance from Intersection	5 ft from ramp
Placement Notes	



Assembly ID: 272



Location

On	Cannonball Path
At	North of Overpass

Installation Details

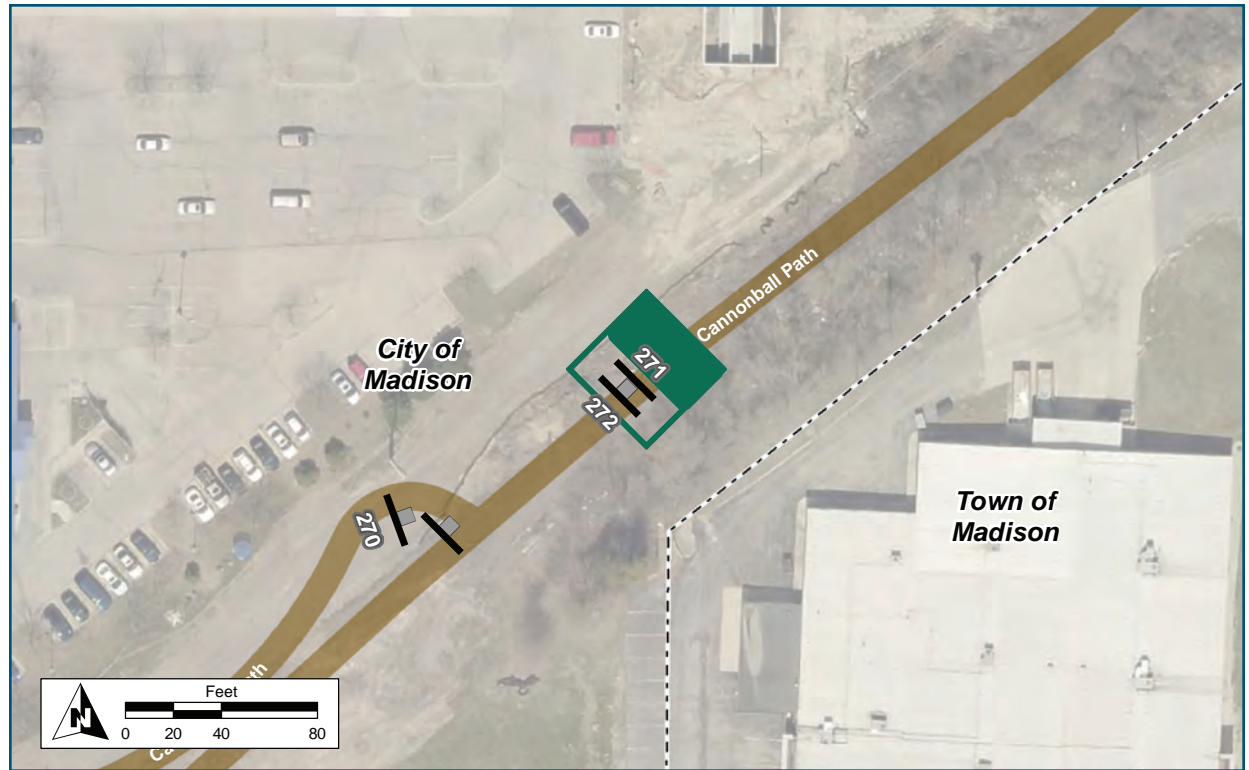
Assembly Type	Confirmation
Jurisdiction	City of Madison
Post	New
Other Assemblies	Back to Back with #271
Sign Facing	Southwest
Post Distance off Pavement	4 ft
Distance from Intersection	50 ft from path junction

Placement Notes

--	--



Assembly ID: 271



Location

On Cannonball Path
At North of Overpass

Installation Details

Assembly Type Decision
Jurisdiction City of Madison
Post New
Other Assemblies Back to Back with #272
Sign Facing Northwest
Post Distance off Pavement 4 ft
Distance from Intersection 50 ft from path junction

Placement Notes

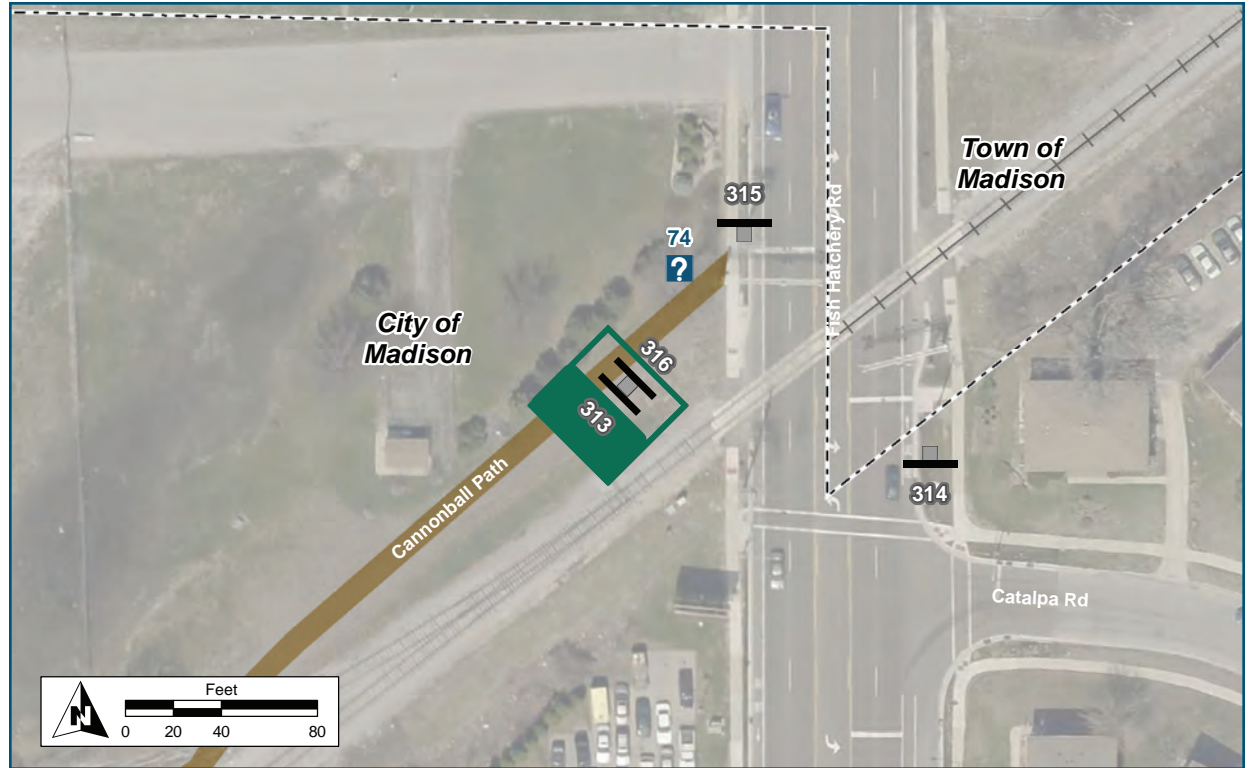


Assembly ID: 313

Fish Hatchery Rd

← Dwtm Madison

Badger Rd →



Location

On Cannonball Path

At Fish Hatchery Road

Installation Details

Assembly Type Path Exit

Jurisdiction City of Madison

Post New

Other Assemblies Back to Back with #316

Sign Facing Southwest

Post Distance off Pavement 4 ft

Distance from Intersection 40-50 ft from sidewalk

Placement Notes

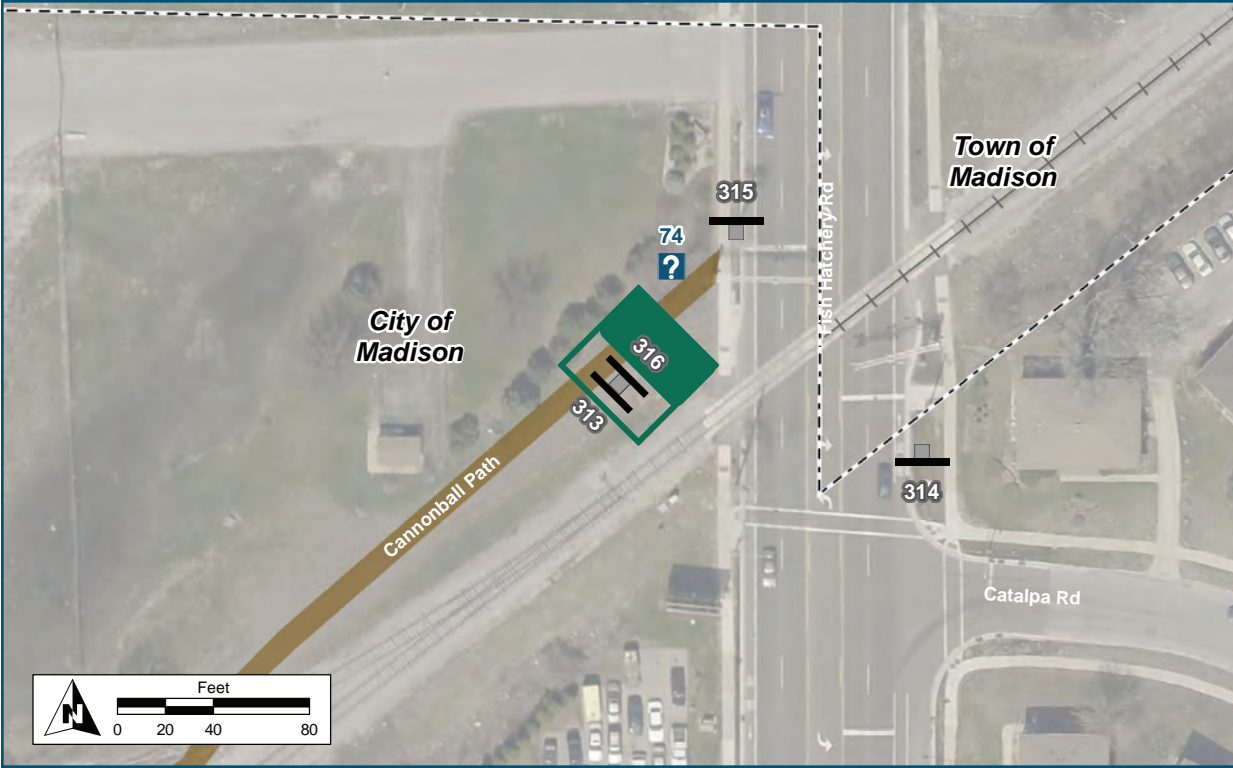
Assembly ID: 316



Beltline 0.7 mi
Overpass 4 min

Fitchburg City 1.5 mi
Limit 9 min

Capital City 2.2 mi
Trail 13 min



Location

On Cannonball Path
At Fish Hatchery Road

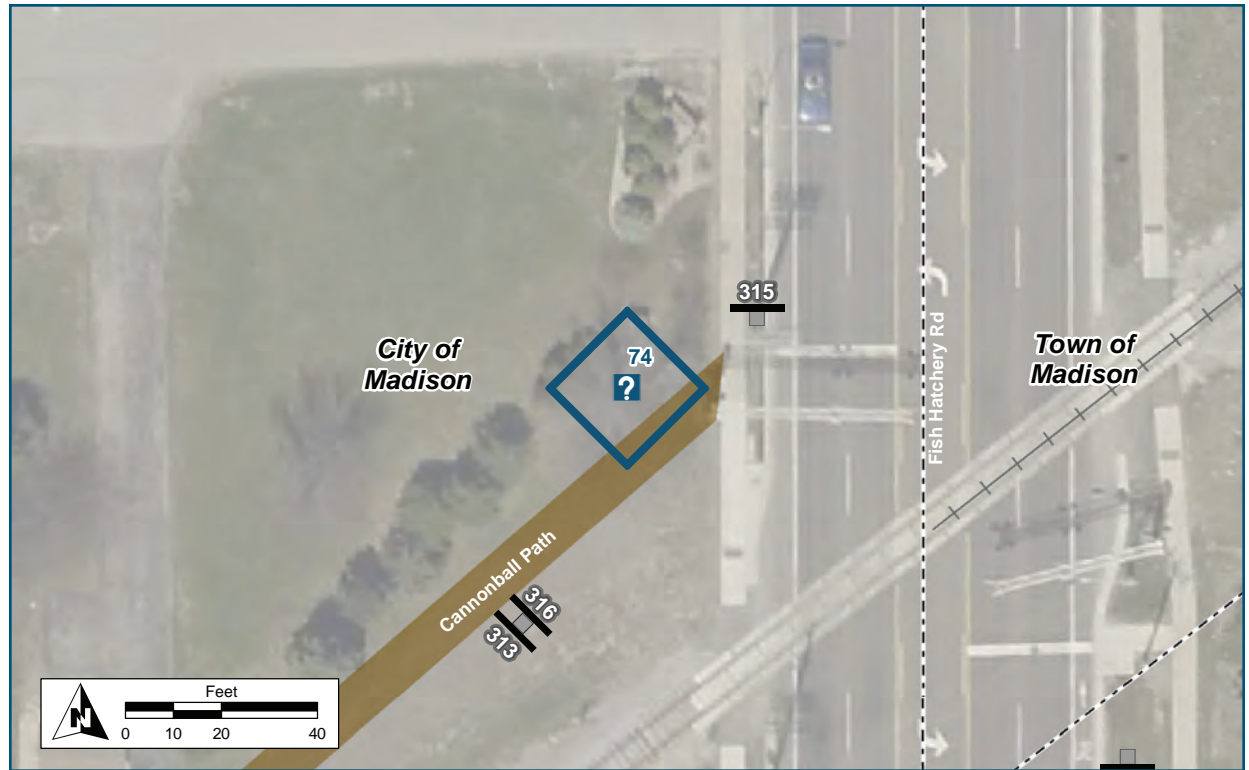
Installation Details

Assembly Type Confirmation
Jurisdiction City of Madison
Post New
Other Assemblies Back to Back with #313
Sign Facing Northwest
Post Distance off Pavement 4 ft
Distance from Intersection 40-50 ft from sidewalk

Placement Notes



Kiosk ID: 74



Location

On Cannonball Path

At West of Fish Hatchery Road

Installation Details

Kiosk Type Map Kiosk

Jurisdiction City of Madison

Existing or Proposed Proposed

Other Amenities None

Sign Facing South

Distance off Pavement 5 ft

Distance from Intersection 10 ft west of sidewalk

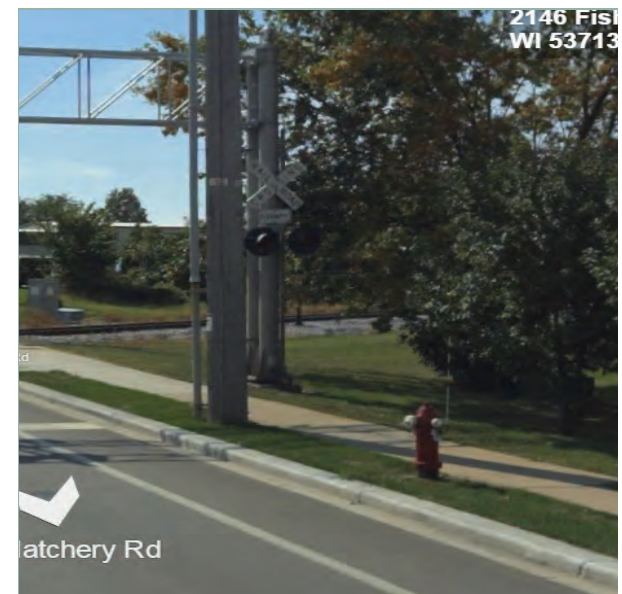
Placement Notes

Place Kiosk so that the map is oriented north and that viewers will also face north.

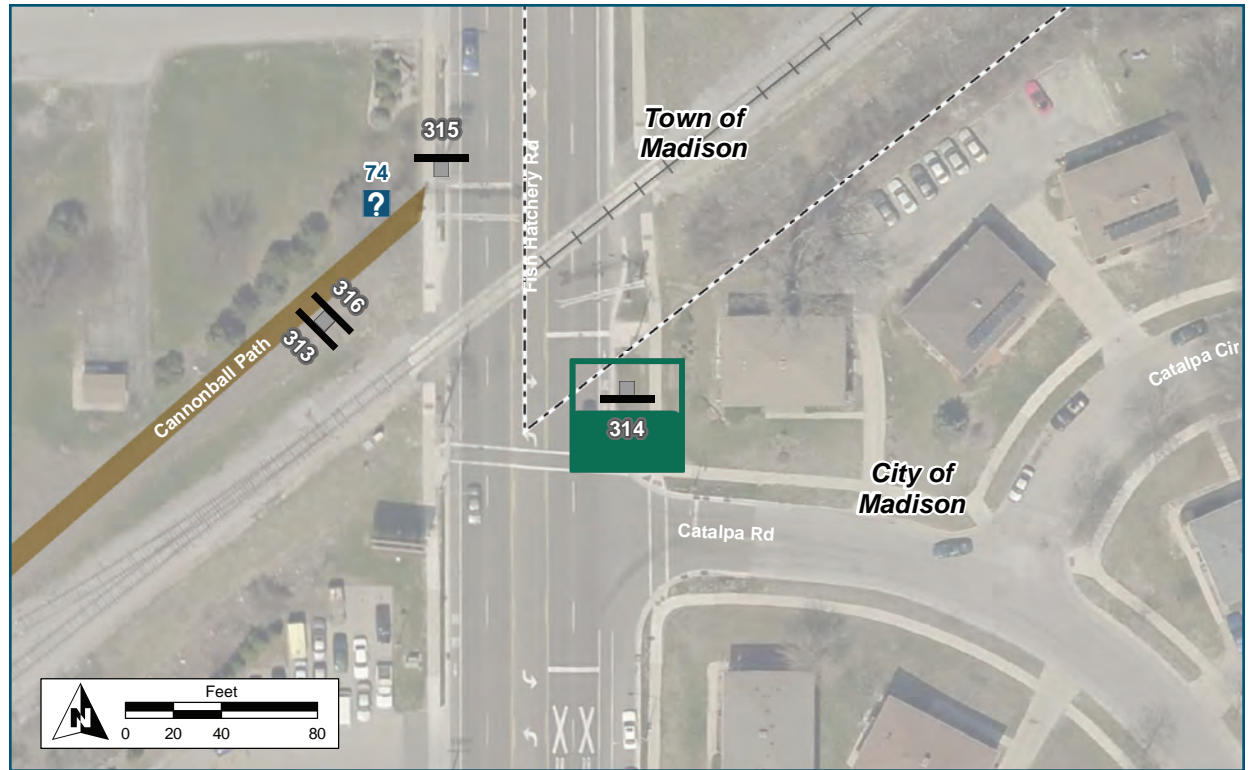
Assembly ID: 315



Location	
On	Fish Hatchery Road
At	South of Cannonball Path
Installation Details	
Assembly Type	Decision
Jurisdiction	Dane County Highway
Post	Existing Streetname
Other Assemblies	None
Sign Facing	North
Post Distance off Pavement	3 ft from curb
Distance from Intersection	5 ft north of intersection with path
Placement Notes	



Assembly ID: 314



Location

On Fish Hatchery Road
At South of Cannonball Path

Installation Details

Assembly Type	Decision
Jurisdiction	Dane County Highway
Post	Existing
Other Assemblies	Existing Bike Lane Panel
Sign Facing	South
Post Distance off Pavement	5 ft from curb
Distance from Intersection	25-30 ft north of Catalpa Rd intersection

Placement Notes

Place wayfinding signs below Bike Lane sign.



THIS PAGE INTENTIONALLY LEFT BLANK

THIS PAGE INTENTIONALLY LEFT BLANK



5: Sign Schedule

Sign Schedule

The following table below lists the planned sign assemblies in order of Assembly ID number.

Assembly ID	On	At	Assembly Type	Jurisdiction	Post	Panel 1 Type	Panel 1 Content
225	Cap City Connector	S of Cannonball	Decision	Madison	New	I-SP	Cannonball Path
227	Cap City Connector	S of Cannonball	Path Access	Madison	New	I-PA	TO Capital City Trail
250	Cannonball Path	Crescent Rd boardwal	Decision	Fitchburg	Exist	FB LOGO	Fitchburg + logo
251	Cannonball	Crescent Rd boardwal	Decision	Fitchburg	Exist	FB LOGO	Fitchburg + logo
252	Cannonball	Seminole Hwy	Decision	Fitchburg	Exist	FB LOGO	Fitchburg + logo
253	Cannonball	Seminole Hwy	Decision	Fitchburg	Exist	FB LOGO	Fitchburg + logo
256	Cannonball	E of Bicycle roundabout	Confirmation	Fitchburg	Exist	FB LOGO	Fitchburg + logo
257	Cannonball	Bicycle Roundabout	Roundabout	Fitchburg	Exist	FB LOGO	Fitchburg + logo
270	Cannonball spur	Cannonball overpass	Decision	Madison	New	I-SP	Cannonball Path
271	Cannonball	N of Overpass	Decision	Madison	New	I-SP	Cannonball Path
272	Cannonball	N of Overpass	Confirmation	Madison	New	I-SP	Cannonball Path
273	Cannonball spur	S of overpass	Decision	Madison	New	I-SP	Cannonball Path
274	Cannonball	South of Overpass	Confirmation	Madison	New	I-SP	Cannonball Path
275	Cannonball	South of Overpass	Decision	Madison	New	FB-A	Fish Hatchery Rd + straight arrow
276	Cannonball	Greenway View	Decision	Madison	Exist	FB-A	Dwtn Madison + straight arrow
277	Cannonball	Greenway View	Decision	Madison	Exist	FB-A	Fitchburg + straight arrow

Panel 2 Type	Panel 2 Content	Panel 3 Type	Panel 3 Content	Panel 4 Type	Panel 4 Content	Panel 5 Type	Panel 5 Content
FB-A	Seminole Hwy + left arrow	FB-A	Post Rd + right arrow	FB-A	Beltline Overpass + right arrow		
AR	Straight arrow						
FB-A	Seminole Hwy + straight arrow	FB-A	Beltline Overpass + straight arrow	FB-A	Crescent Rd + left arrow		
FB-A	Dunn's Marsh Bike Roundabout + straight arrow	FB-NA	Regional Path Connections	FB-A	Seminole Mtb trails + icon+ straight arrow	FB-A	Crescent Rd + right arrow
FB-A	Dunn's Marsh Bike Roundabout + straight arrow	FB-A	Seminole Mtb Trails + icon + straight arrow	FB-A	Dawley Bike Hub + left arrow + icons	Exist FB-A	UW Arboretum West Entrance + right arrow
FB-A	Post Rd + straight arrow	FB-A	Beltline overpass + straight arrow	FB-A	UW Arboretum West Entrance + left arrow	FB-A	Dawley Bike Hub + right arrow + icons
I-SP	Cannonball Path + bike/ped	FB-NA	Trail Pass Not Required	FB-D	Seminole Hwy 0.6	FB-D	Beltline Overpass 2.7
FB-A	Verona Rd Underpass via Cap. City Path + diagonal up right arrow	FB-A	Camp Randall via Southwest Path + diagonal up right arrow				
FB-A	Dwtn Madison + left arrow	FB-A	Fitchburg + right arrow	FB-A	Capital City Trail + right arrow		
FB-A	Fitchburg + straight arrow	FB-A	Capital City Trail + straight arrow	FB-A	W Beltline Frontage Rd + right arrow		
FB-D	Fish Hatchery Rd 0.6 mi	FB-D	Dwtn Madison 2.7 mi				
FB-A	Fish Hatchery Rd + left arrow	FB-A	Dwtn Madison + left arrow	FB-A	Fitchburg + right arrow		
FB-d	Post Rd 0.6 mi	FB-D	Capital City Trail +bike/ped 1.4 mi	FB-D	Dunn's Marsh Bike Roundabout 2.6 mi		
FB-A	Dwtn Madison + straight arrow	FB-A	W Beltline Frontage Rd + left arrow				
FB-A	Todd Dr + left arrow + FB-NA: "Via Greenway View"	FB-A	Greenway Cross + right arrow	FB-NA	Via Luann Lane		
FB-A	Greenway Cross + left arrow	FB-NA	Via Luann Lane	FB-A	Todd Dr + right arrow + FB-NA: "Via Greenway View"		

Assembly ID	On	At	Assembly Type	Jurisdiction	Post	Panel 1 Type	Panel 1 Content
278	Cannonball	Greenway View	Decision	Madison	Exist	FB-A	Greenway Cross + straight + FB-NA "Via Luann Ln"
279	Cannonball	Greenway View	Decision	Madison	Exist	I-SP	Cannonball Path
280	Leopold Pk path spur	Luann Ln	Path Access	Madison	New	I-PA	TO Cannonball Path
281	Cannonball	N of Greenway View	Etiquette	Madison	Exist	Exist etiquette	Path etiquette in English
282	Cannonball	S of Greenway View	Etiquette	Madison	Exist	Exist Etiquette	Path etiquette in English
283	Luann Ln	Leopold Pk path spur	Path Exit	Madison	Exist	Existing StreetName	Luann Ln
285	Cannonball spur	W Beltline frontage	Streetname	Madison	Exist	StreetName	W Beltline Frontage Rd
286	Cannonball path	spur to Frontage Rd	Decision	Madison	New	FB-A	Fish Hatchery Rd + straight arrow
287	Cannonball	S of overpass	Decision	Madison	New	FB-A	Post Rd + straight arrow
288	Cannonball Spur	W Beltline Frontage	Streetname	Madison	Exist	Exist Streetname	W Beltline Frontage
291	Cannonball	Leopold Elementary	Decision	Madison	New	FB-A	Leopold Elem + left arrow
292	Cannonball	Leopold Elementary	Decision	Madison	New	FB-A	Leopold Elem + right arrow
293	Cannonball	Leopold Elementary	Decision	Madison	New	Streetname	Cannonball PATH
294	Post Rd	E of Cannonball	Decision	Madison	New	I-UN	BIKE ROUTE
295	Post Rd	W of Cannonball	Decision	Madison	New	I-UN	BIKE ROUTE
296	Post Rd	E of Cannonball	Confirmation	Fitchburg	Existing	Existing Bike Lane	Existing Bike Lane
298	Cannonball	S of Post Rd	Confirmation	Madison	New	FB LOGO	Madison + logo
299	Cannonball	N of Post Rd	Decision	Madison	New	FB LOGO	Madison + logo
300	Cannonball	N of Post Rd	Confirmation	Madison	New	FB LOGO	Madison + logo

Panel 2 Type	Panel 2 Content	Panel 3 Type	Panel 3 Content	Panel 4 Type	Panel 4 Content	Panel 5 Type	Panel 5 Content
FB-A	Dwtm Madison + left arrow	FB-A	Fitchburg + right arrow				
FB-A	Todd Dr + straight + FB-NA "Via Greenway View"	FB-A	Fitchburg + left arrow	FB-A	Dwtm Madison + right arrow		
AR	Straight Arrow						
Exist etiquette	Path etiquette in Spanish	Exist rule	Allowed uses (incorrect)				
Exist etiquette	Path etiquette in Spanish	Exist rule	Existing allowed uses				
FB-A	Greenway Cross + right-then-left arrow						
FB-A	W Beltline Frontage Rd+ left arrow						
FB-A	Fitchburg + straight arrow	FB-A	Capital City Trail + bike/ped + straight arrow	FB-A	W Beltline Frontage Rd + right arrow		
Exist Streetname	Cannonball PATH						
FB-A	Post Rd + left arrow	FB-A	Beltline overpass + right arrow				
FB-A	Cannonball Path + right & left arrow	FB-A	Dunn's Marsh Bicycle Roundabout + left arrow	FB-A	Dwtm Madison + right arrow		
FB-A	Fish Hatchery Rd + straight arrow	FB-A	Cannonball Path + bike/ped_+ left&right arrow	FB-A	Dwtm Madison + left arrow		
FB-D	Fish Hatchery Rd 0.5 mi	FB-D	Jenni & Kyle Preserve + shelter, hiking 1.2 mi				
I-SP	Cannonball Path	Fee	Trail Pass Not Required	FB-D	Capital City Trail + bike/ped 0.7 mi	FB-D	Dunn's Marsh Bike Roundabout 2.0 mi
FB-A	Capital City Trail + straight arrow	FB-A	Dunn's Marsh Bike Roundabout + straight arrow	FB-A	Fish Hatchery Rd + left arrow	FB-A	Jenni & Kyle Preserve +shelter hiking+ left arrow
I-SP	Cannonball Path	FEE	Trail Pass Not Required	FB-D	Beltline overpass 0.7 mi	FB-D	Dwtm Madison 3.5 mi

Assembly ID	On	At	Assembly Type	Jurisdiction	Post	Panel 1 Type	Panel 1 Content
301	Cannonball	S of Post Rd	Decision	Madison	New	FB LOGO	Madison + logo
302	Cannonball	E of Cap City spur	Decision	Madison	New	FB LOGO	Madison + logo
303	Cannonball	E of Cap City spur	Confirmation	Madison	New	I-SP	Cannonball Path
304	Cannonball	W of Cap City spur	Confirmation	Madison	New	I-SP	Cannonball Path
305	Cannonball	W of Cap City spur	Decision	Madison	New	FB LOGO	Madison + logo
306	Cannonball	Arboretum spur	Decision	Madison	New	FB LOGO	Madison + logo
307	Cannonball	Arboretum spur	Decision	Madison	New	FB LOGO	Madison + logo
308	Cannonball	Arboretum spur	Decision	Madison	New	I-SP	Cannonball Path
311	Cannonball spur	S of Westview Ln	Path Access	Madison	Exist	Existing Streetname	Westview Lane
312	Cannonball spur	S of Westview Ln	Path Exit	Madison	Exist	Streetname	Existing Westview Ln
313	Cannonball	W of Fish Hatchery	Path Exit	Madison	New	Streetname	Fish Hatchery Rd
314	Fish Hatchery	S of Cannonball	Decision	Dane Co Hwy	Existing	BIKE LANE	Existing BIKE LANE
315	Fish Hatchery	N of Cannonball	Streetname	Dane Co Hwy	Existing	Streetname	Cannonball PATH & icons
316	Cannonball	W of Fish Hatchery	Confirmation	Madison	New	I-SP	Cannonball Path
607	Cannonball	E of Bike Roundabout	Decision	Fitchburg	Exist	FB LOGO	Fitchburg + logo
628	Post Road	Cannonball Path	Streetname	Madison	Exist	Streetname	Post Road
639	Cannonball	E of Bike Roundabout	Confirmation	Fitchburg	New	FB LOGO	Fitchburg + logo
640	Cannonball	E of Bike Roundabout	Decision	Fitchburg	New	FB LOGO	Fitchburg + logo

Panel 2 Type	Panel 2 Content	Panel 3 Type	Panel 3 Content	Panel 4 Type	Panel 4 Content	Panel 5 Type	Panel 5 Content
FB-A	Beltline overpass + straight arrow	FB-A	Dwtm Madison + straight arrow	FB-A	Fish Hatchery Rd + right arrow	FB-A	Jenni & Kyle Preserve + shelter hiking + right arrow
FB-A	Dawley Bike Hub+ icons+ straight arrow	FB-A	Dunn's Marsh Bike Roundabout + straight arrow	FB-A	Capital City Trail +icons+ left arrow		
FEE	Trail Pass Not Required	FB-D	Post Rd 0.5 mi	FB-D	Dwtm Madison 4 mi		
FEE	Trail Pass Not Required	FB-D	Seminole Hwy 0.8 mi	FB-D	Dunn's Marsh Bike Roundabout 1.4 mi		
I-SP	Cannonball Path	FB-A	Beltline Overpass + straight arrow	FB-A	Capital City Trail + right arrow		
FB-A	UW Arboretum SE entrance+ icons + right arrow	FB-A	Westview Ln + right arrow				
FB-A	UW Arboretum SE entrance+ icons + left arrow	FB-A	Westview Ln + left arrow				
FB-A	Capital City Trail + left arrow	FB-A	Beltline Overpass + left arrow	FB-A	Dunn's Marsh Bike Roundabout + right arrow		
I-PA	TO Cannonball Path	AR	straight arrow	Exist Reg	MOTOR DRIVEN VEHICLES PROHIBITED		
FB-A	Grandview Blvd/Post Rd + right arrow	FB-NA	Via Westview Ln				
FB-A	Dwtm Madison + straight-left arrow	FB-A	Badger Rd + right arrow				
FB-A	Dwtm Madison + bike + straight arrow	FB-A	Cannonball Path + bike/ ped + left arrow	FB-NA	Beltline Overpass + bike/ ped + left arrow		
Streetname	Fish Hatchery Rd	FB-A	Beltline Overpass + bike/ ped+ right arrow				
FB-D	Beltline Overpass 0.7 mi	FB-D	Fitchburg City Limit 1.5 mi	FB-D	Capital City Trail 2.2 mi		
FB-A	Military Ridge Path + bike/ped + straight arrow	FB-A	Verona + straight arrow	FB-A	Badger Prairie Co Park + icons + straight arrow		
Streetname	Cannonball Path	Warning	Yellow diamond bike ped symbol	AR	diagonal down arrow		
FB-D	Dunn's Marsh Bike Roundabout 0.2 mi	FB-NA	Regional Path Connections				
FB-NA	In 300 Feet	FB-A	Seminole Mtb Co Trails + icon + down diagonal left arrow	FB-A	Dawley Hub via Cap. City Path +icons+ down diagonal left arrow	FB-A	Belleville via Badger State Trl + down diagonal left arrow

Kiosk Schedule

The following table below lists the planned kiosk assemblies in order of Kiosk ID number.

Kiosk ID	On	At	Kiosk Type	Jurisdiction	Existing or Proposed	Other Amenities	Sign Facing	Placement Notes
24	Cannonball Path	Bicycle Roundabout	Map Kiosk, self registration station	Fitchburg	Existing	Bench	East/West	No change to existing kiosk
74	Cannonball Path	West of Fish Hatchery Road	Map Kiosk	City of Madison	Proposed	None	South	Place Kiosk so that the map is oriented north and that viewers will also face north.
75	Cannonball Path	North of Post Road	Map Kiosk	City of Madison	Existing	None	West	Existing Kiosk Map to Remain
87	Cannonball Path	Arboretum Spur	Map Kiosk, rest area	City of Madison	Existing	Bike racks, bench, water fountain	South	Map is difficult to read due to fogging and condensation.

THIS PAGE INTENTIONALLY LEFT BLANK

