



Bicycle Wayfinding Plan University Avenue

September 2016

THIS PAGE INTENTIONALLY LEFT BLANK

Table of Contents

1 Corridor Overview	1
Introduction	2
How to Use this Wayfinding Sign Plan	3
How to read the Sign Assembly Detail Sheets	4
2 Fabrication and Installation Details	5
Fabrication Specifications	6
Sign Dimensions	6
Post Style	8
Roadway Installation	8
Shared-Use Path Installation	9
3 Plan Maps	11
4 Sign Assembly Detail Sheets	15
5 Sign Schedule	67

Produced by:



THIS PAGE INTENTIONALLY LEFT BLANK



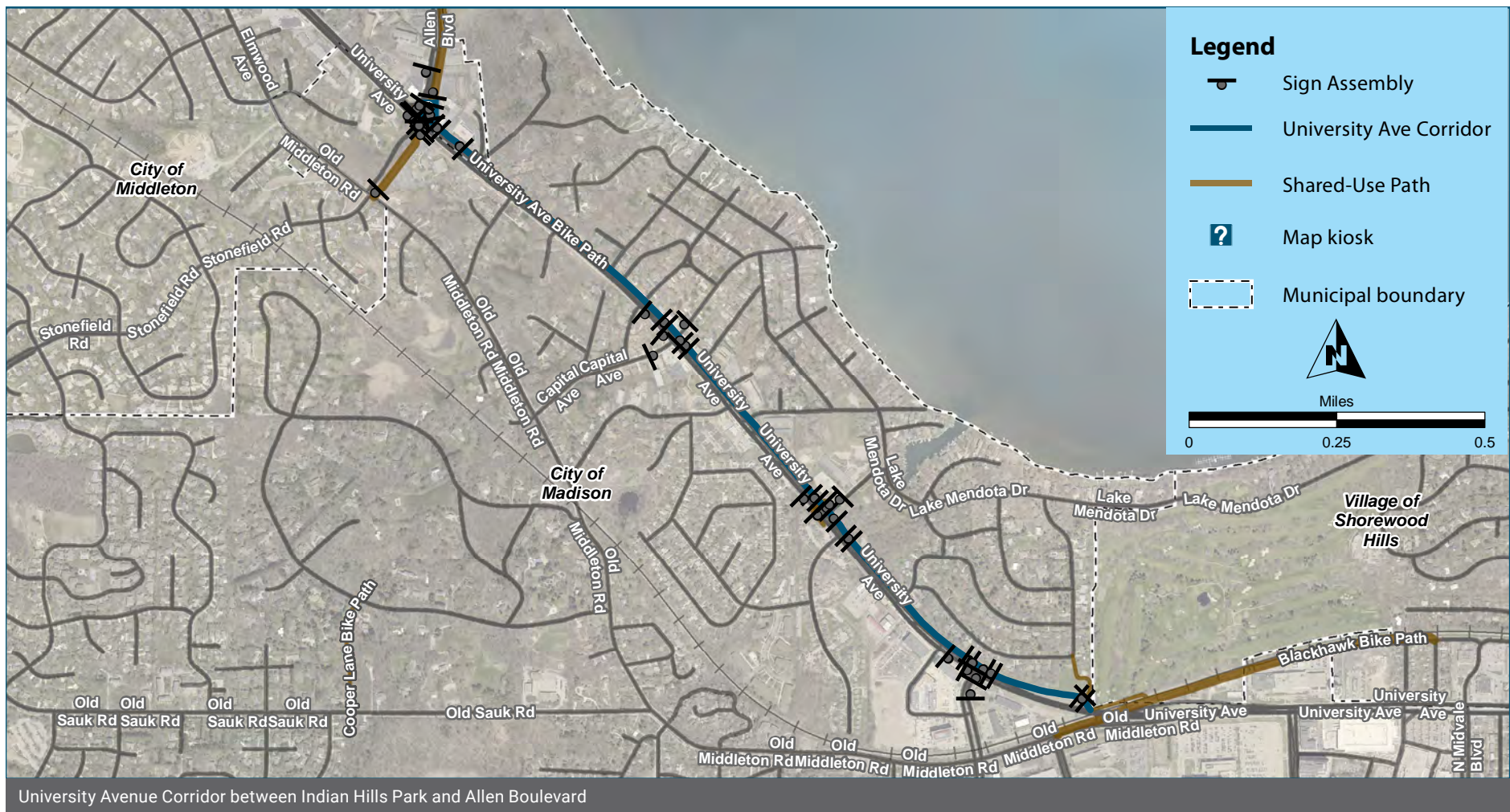
1: Corridor Overview

Corridor Overview

In 2012, University Avenue between Whitney Way and Allen Boulevard was rebuilt with bike lanes, wide medians, and a sidepath on the north side of the roadway. As a result, it is now a popular bike route between Middleton and central Madison.

The wayfinding plan for this corridor was designed for both bicyclists who use the bike lanes and are those who use the sidepath. The sidepath is considered the “primary” bikeway on the corridor, since it would be preferred by casual cyclists.

Both decision and confirmation assemblies will be placed on the sidepath. The bike lanes are considered “secondary”. Only decision assemblies will be placed in view of the eastbound bike lanes.



How to Use this Wayfinding Sign Plan

This wayfinding sign plan was developed using the methodology and guidelines in the Dane County Bicycle Wayfinding Manual (“the Manual”). The Manual informed decisions about where to place sign assemblies and the destinations to include on signs. The Manual also provides detailed standards for sign design, fabrication, and installation.

This plan includes the following sections to help field crews with sign placement and installation:

Post Installation

Provides specifications on sign mounting standards and the proper hardware to be used. Some jurisdictions may have their own sign mounting standards that should be followed instead.

Corridor overview maps

Show the approximate locations of the sign assemblies along the entire Cannonball Path corridor. Sign assemblies are labeled by their Assembly ID number

Sign Assembly Detail Sheet

Each Sign Assembly Detail Sheet displays the Assembly Identification code at the top, an image of the sign assembly as it should look mounted to the post, a map of the assembly location, and placement information. Most Detail Sheets also include a photo of the approximate location to aid in placement.

Judgement Required

This sign plan does not provide full engineering documents for each sign placement and installation. The sign placement locations in this guide were made using a combination of aerial satellite images, Google Street View, and field work. Therefore, the locations for each sign assembly are rough estimates.

For each sign assembly, the Sign Assembly Detail Sheet provides approximate distances for the sign assembly placement from both the nearest intersection and from the road or path on which the sign assembly is installed. The distances provided on the Sign Assembly Detail Sheet may point to a deep ditch, a location that blocks another sign, or a location that is blocked from view by overhanging branches. The field crew manager will need to use judgement to install the signs in a location where they are visible from the road or path.

Common Terms Used in this Plan

Sign Assembly

A combination of one or more sign panels mounted to the same post and facing the same direction.

Sign Placement

The approximate location, on a path or street, where the sign assembly should be installed

Sign Panel

One single sign plate. Most of the wayfinding sign assemblies in this guide have two or more sign panels.

Post Installation

The specific distance from the street, sidewalk or path that the post should be embedded, and the height of the post that should be used.

Sign Mounting

The height and direction, and sign panel assembly order as mounted to the post

How to Read the Sign Assembly Detail Sheets

The Sign Assembly Detail sheets are displayed in this plan in order of west to east, from the Allen Boulevard to Indian Hills Park. The Sign Assembly ID numbers do not have a particular order. They are only to be used to match the sign assembly on the plan maps, to the Assembly ID in the Detail Sheets.

- Maps in this Sign Plan display the approximate location of each sign assembly, the sign assembly ID number, and the orientation of the sign panel.
- The assembly symbols are rotated to show the direction the sign assembly is to face. The “post” symbol is shown behind the “panel” symbol.

Assembly ID: 271

Assembly Identification Number

Post Symbol

Sign Panel Symbol

Municipal Boundary

Green Box Highlights the Sign Assembly being Detailed

Scale: 1 inch = 80 feet

Location	
On	Cannonball Path
At	North of Overpass

Installation Details	
Assembly Type	Decision
Jurisdiction	City of Madison
Pole	New
Other Assemblies	Back to Back with #272
Sign Facing	Northwest
Distance off Pavement	3 feet
Distance from Intersection	50 feet from path juncture

Placement Notes

Example Sign Assembly Detail Sheet



2: Fabrication and Installation Details

Fabrication and Installation Details

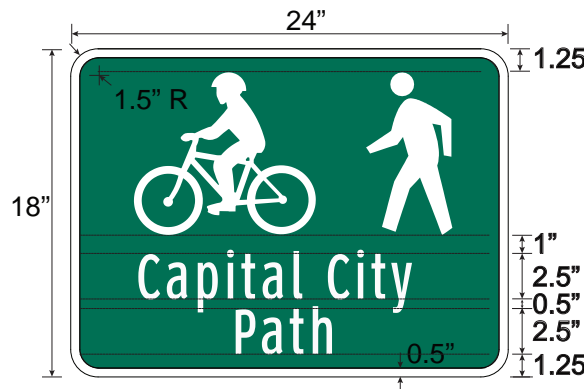
Fabrication Specifications

Signs shall be installed in accordance with each governing jurisdiction's standards and specification. For jurisdictions that don't have their own standard sign fabrication specifications, the Wisconsin Department of Transportation's (WisDOT) Standard Specifications for Signs may be used. They may be found at <http://wisconsindot.gov/Pages/doing-bus/eng-consultants/cnslt-rsrces/rdwy/stnds-spec.aspx>, under Part 6 – Incidental Construction, Section 637 Signing.

Sign Dimensions

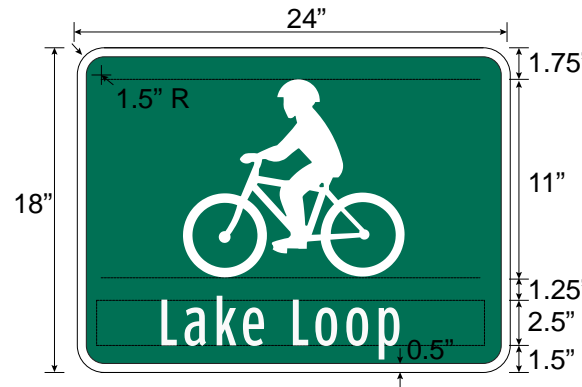
Identification/Shared-Use Paths (I-SP)

- 18" tall x 24" wide
- Highway Gothic font with at least 2" capital letter height; 2.5" height is preferred. Use upper and lower case for text
- Shared-Use Paths should be identified with bicycle and pedestrian symbols



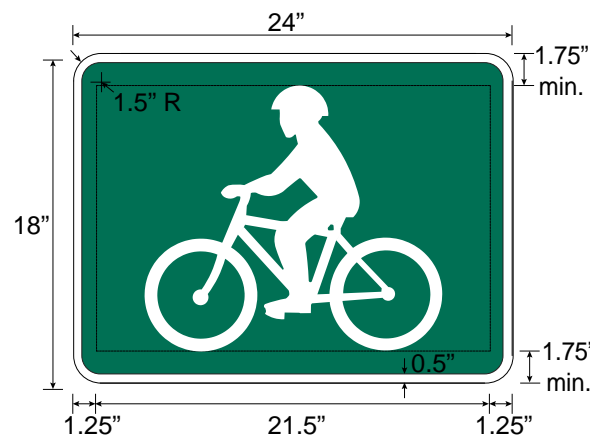
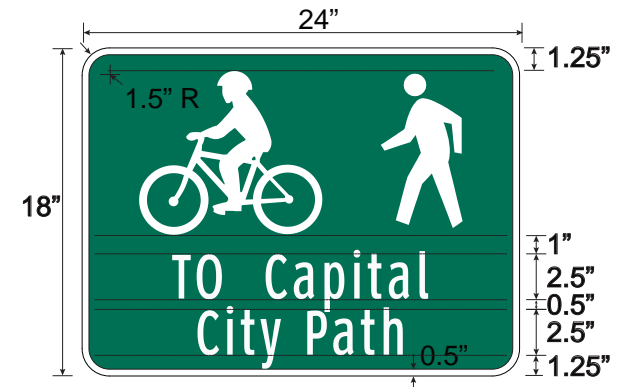
Identification/On-Street Routes (I-OS)

- 18" tall x 24" wide
- Bicycle rider symbol only
- For "signature" named on-street routes, include the name of the route below the bicycle symbol in Highway Gothic font with at least 2" capital letter height. 2.5" height is preferred. Use upper and lower case for text.



Identification/Path Access (I-PA)

- 18" tall x 24" wide
- Highway Gothic font with at least 2" capital letter height; 2.5" height is preferred.
- "TO" is upper case, path name is upper and lower case
- Shows bicycle and pedestrian mode symbols and the name of the path

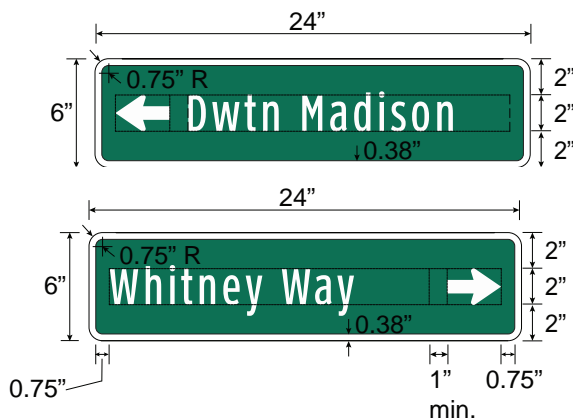


Fingerboards

- 6", 9", or 12" tall x 24" wide
- Highway Gothic font with 2" capital letter height.
- Use upper and lower case for text
- Standard horizontal spacing between the main elements of a fingerboard (arrows, text, symbols, and distance) is one inch (1"); the recommended minimum spacing is 3/4".

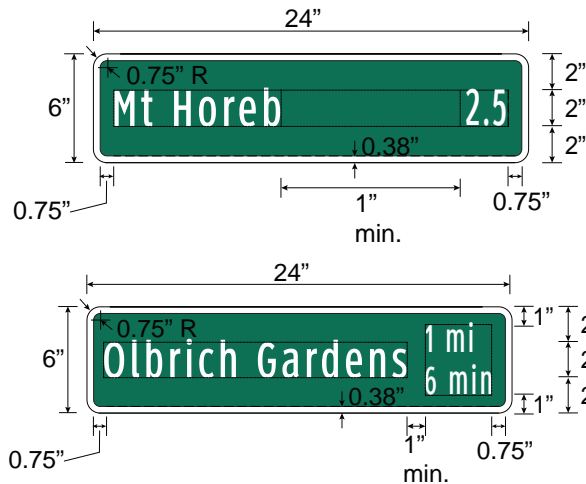
Fingerboard Arrow Panel (FB-A)

- Shows destination name and directional arrows
- Place left and through arrows on the far left of the sign; place right arrows on the far right



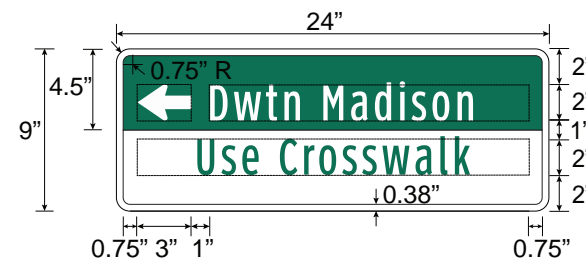
Fingerboard Distance Panel (FB-D)

- Shows destination name and distance (and optionally, time)



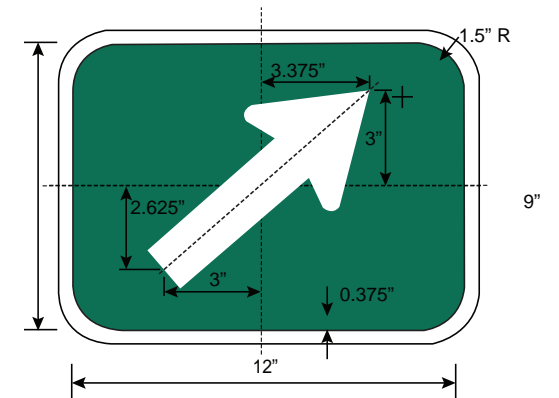
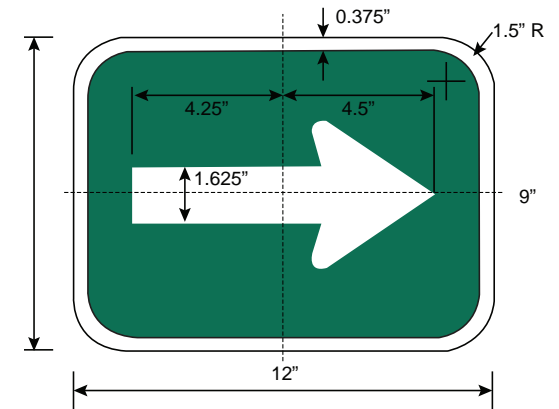
Fingerboard Navigation Aid Panel (FB-NA)

- Combines the FB-A or FB-D panels with supplementary information to help cyclists use preferred route
- Green text on white background
- Center text, except when accompanied by an arrow, in which case it should be justified to the opposite side of the arrow



Arrow Plaques (AR)

- 9" tall x 12" wide
- Any of the standard MUTCD directional arrow plates may be used



Installation Details

Signs and sign posts shall be installed according to the governing jurisdiction’s standards and specifications. For jurisdictions that don’t have their own standards, the following may be used.

Post style

Sign posts should allow signs to be mounted on all four sides. The following post styles are acceptable:

- 2” square perforated galvanized post
- 2 3/8” round galvanized post
- 4” square wood post (for parks and natural settings)

The length of the post and the depth of the embedment will depend upon the overall weight of the signs and the soil/pavement conditions.

Roadway Installation

Posts of 12’ in height can usually accommodate an identification panel with two fingerboard panels.

Wayfinding assemblies should be installed on separate posts from existing signs, except where they do not conflict with the existing sign.

- Wayfinding assemblies may be placed above parking restriction signs.
- Wayfinding assemblies may be placed below Bike Lane signs.
- The post may need to be replaced with a longer post to maintain the 7’ minimum vertical clearance.

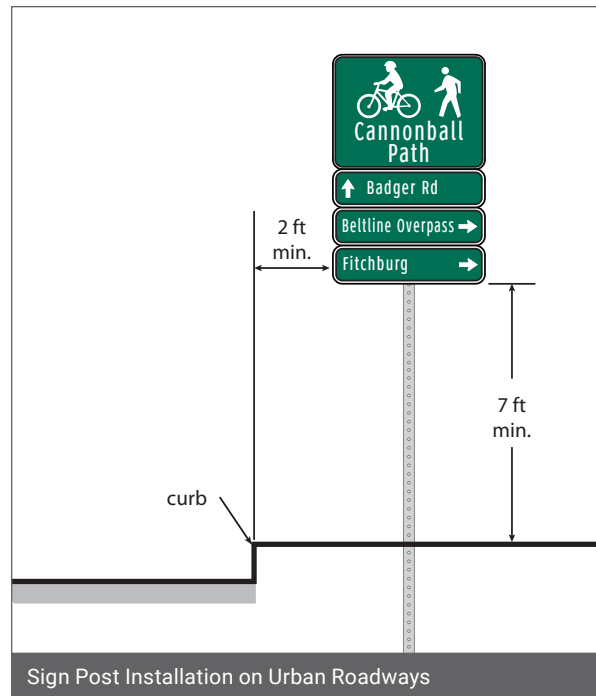
Urban Roadways

Vertical Clearance

- Minimum of 7 feet from the ground to the bottom edge of the sign.

Lateral Clearance

- Minimum of 2 feet from face of the curb to the side edge of the sign (post should be installed at least 3 feet from the face of the curb).
- In dense commercial areas where existing posts are close to the curb: 1 foot from face of curb to edge of sign (post should be in-stalled at least 2 feet from face of curb).
- Signs should not intrude into a sidewalk.



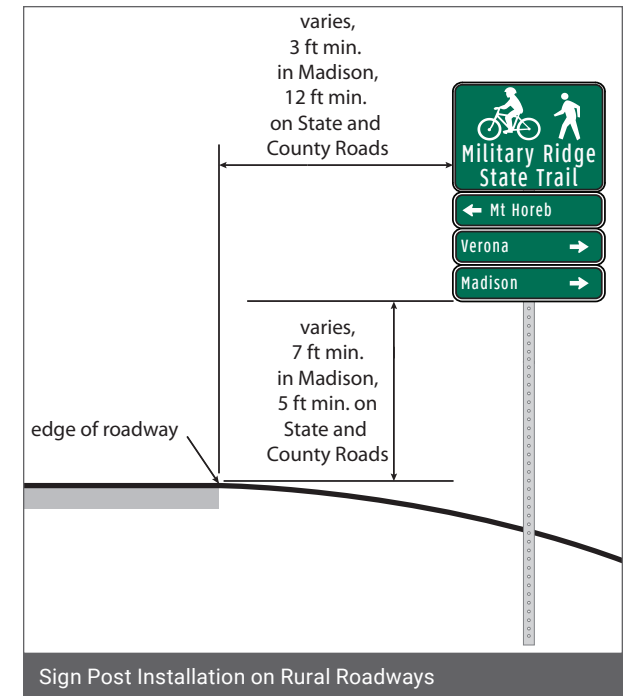
Rural Roadways

Vertical Clearance

- Municipal Streets: Refer to local jurisdiction standards.
- State and County Roads: Minimum of 5 feet from the pavement to the bottom edge of the sign.

Lateral Clearance

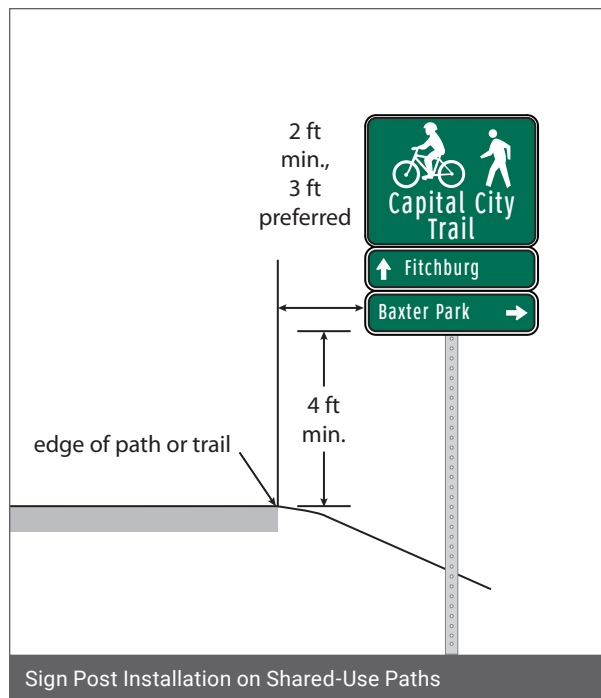
- Municipal Streets: Refer to local jurisdiction standards.
- State and County Roads: minimum of 12 feet from the edge of the travel lane to the edge of the sign.



Shared-Use Path Installation

Posts of 10' in height can usually accommodate an identification panel with two fingerboard panels. This height will allow for the installation of supplementary signs while maintaining a minimum 4' height as measured from the height of the shared use path to the bottom edge of the bottom sign.

It is common on shared-use paths for two sign assemblies to be mounted on the same sign post. If signs are mounted perpendicularly using standard bolts, longer posts may be required. Alternatively, jurisdictions may consider the use of wing brackets to allow two or more signs to be mounted perpendicularly at the same height.



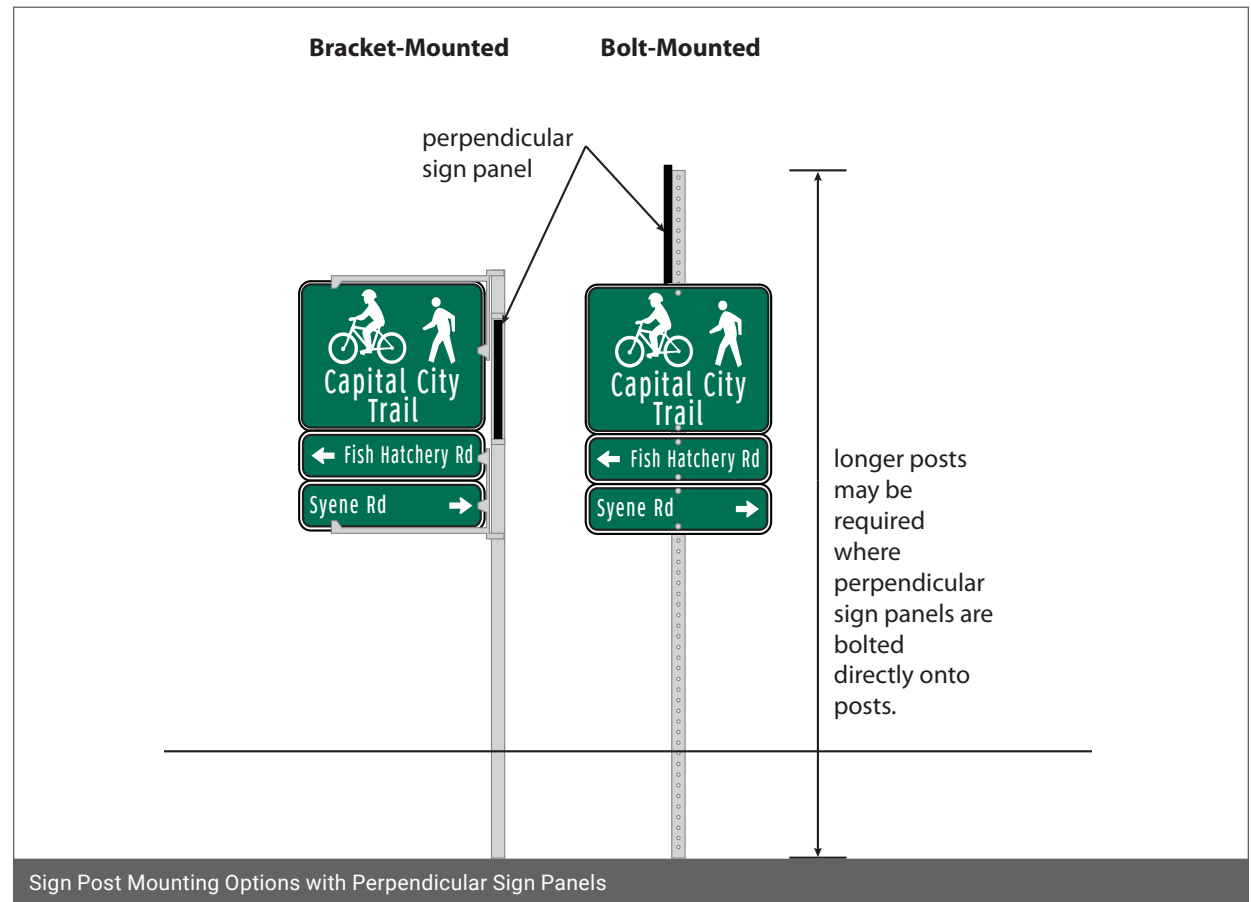
Shared Use Paths

Vertical Clearance

- Minimum of 4 feet from the height of the shared use path to the bottom edge of the sign.
- For signs placed overhead of shared-use paths, a minimum of 8 feet vertically over entire width of shared-use path.
- Mile Markers along shared-use paths should be installed so the bottom of the sign is 3 feet from the height of the shared-use path.

Lateral Clearance

- Preferred: 3 feet from the edge of the path to the side edge of the sign (post should be installed at least 4 feet from the edge of the path).
- Minimum: 2 feet from the pavement to the side edge of the sign (post should be installed at least 3 feet from the edge of the path).



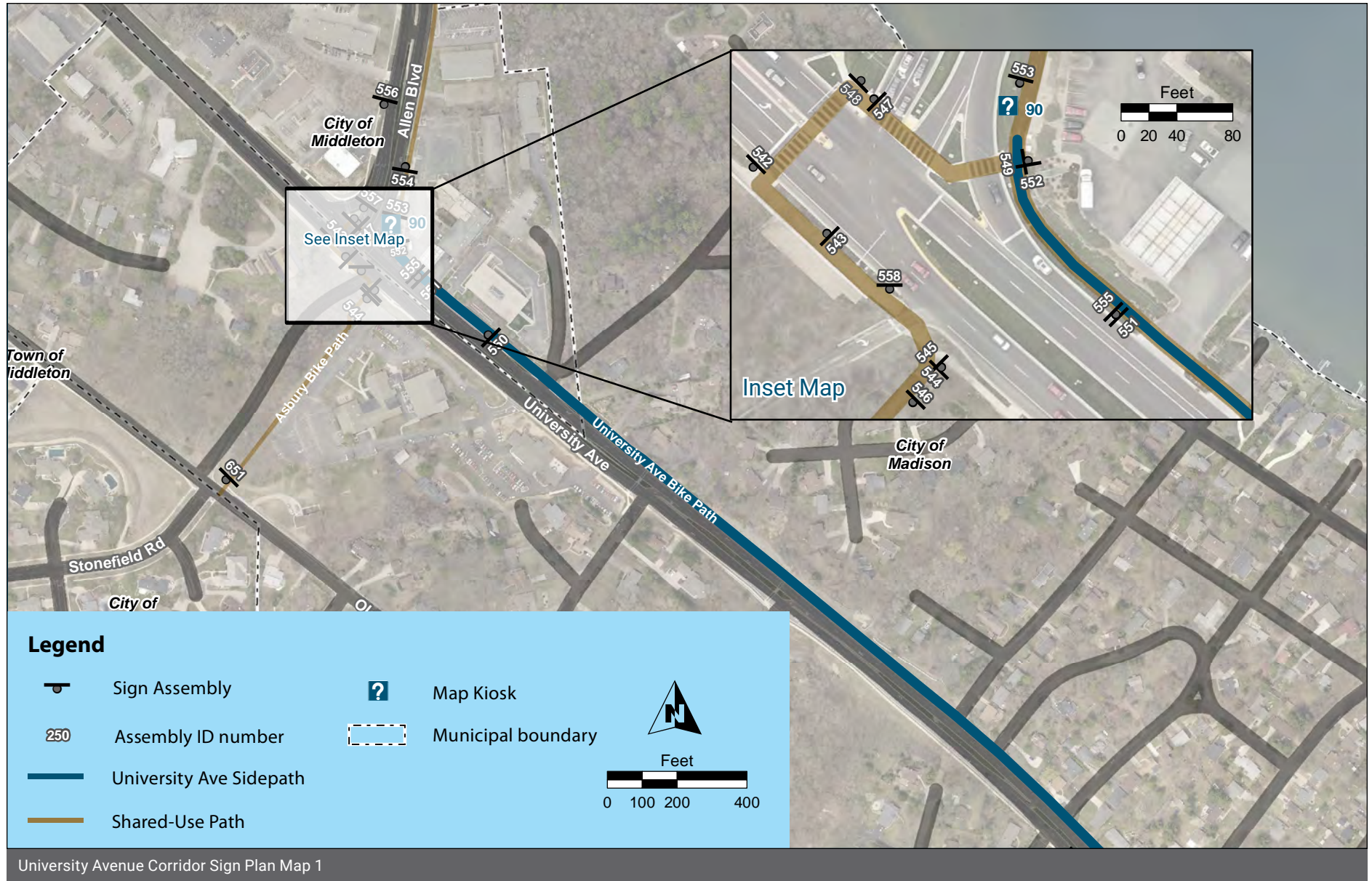
THIS PAGE INTENTIONALLY LEFT BLANK



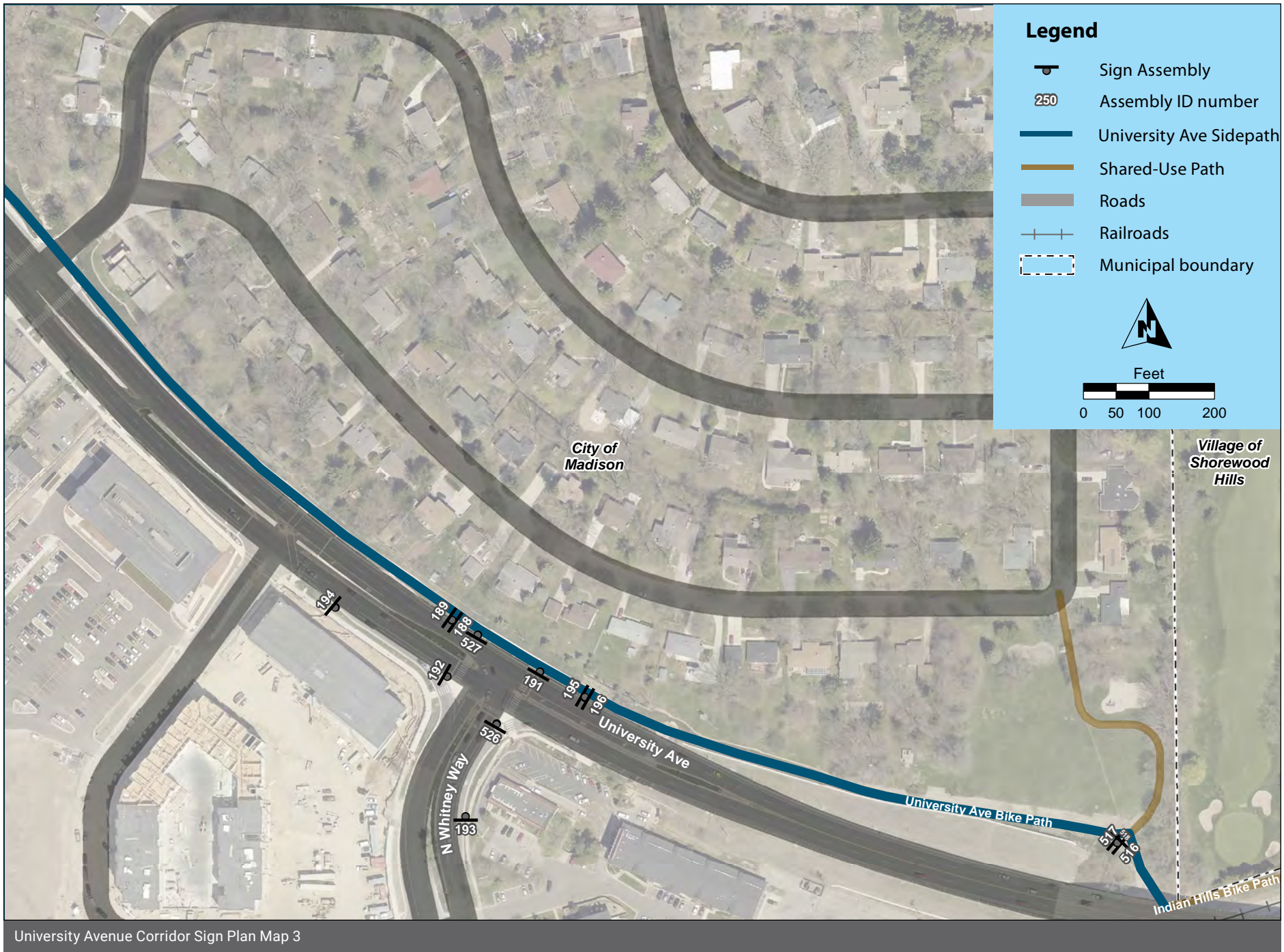
3: Plan Maps

Plan Maps

The following 4 pages show the wayfinding sign plan for the University Avenue corridor. Sign Assemblies are labeled with their Assembly ID number. The symbols are rotated to show the direction the sign assembly should be facing, so that the “post” symbol is shown behind the sign “panel” symbol.





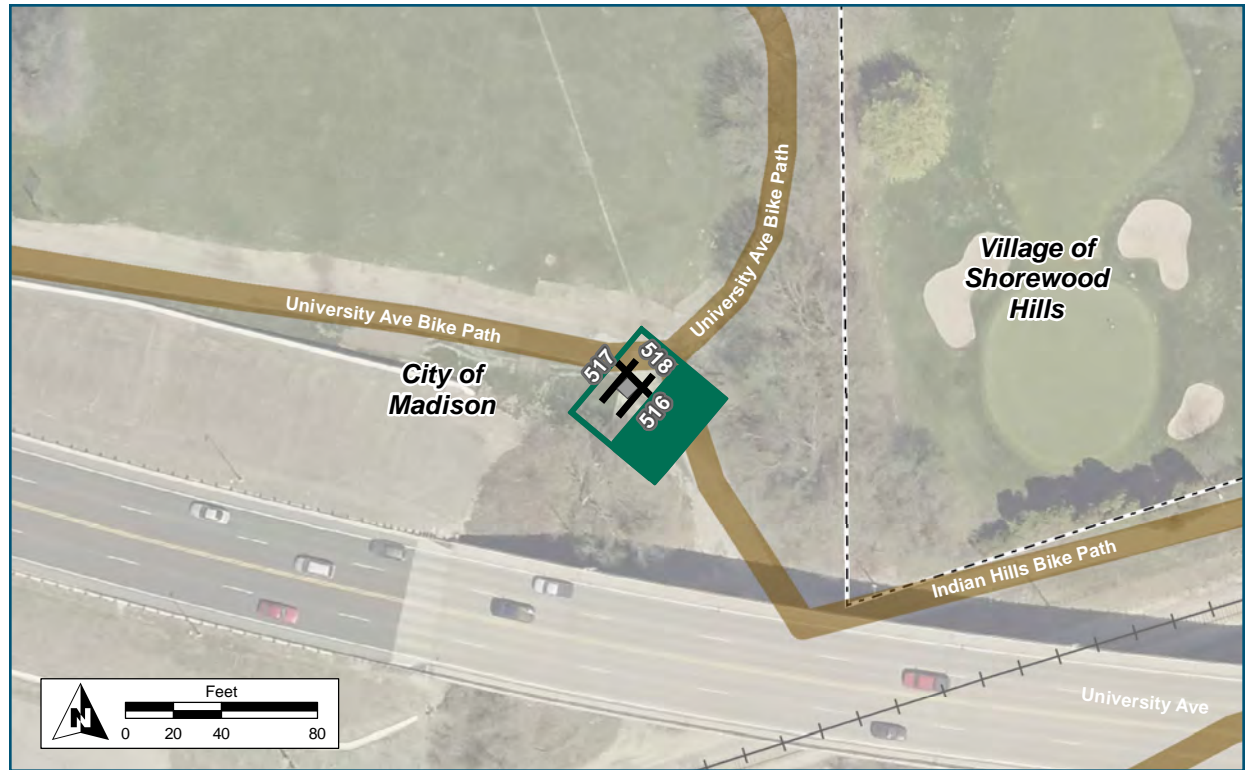


University Avenue Corridor Sign Plan Map 3



4: Sign Assembly Detail Sheets

Assembly ID: 516



Location

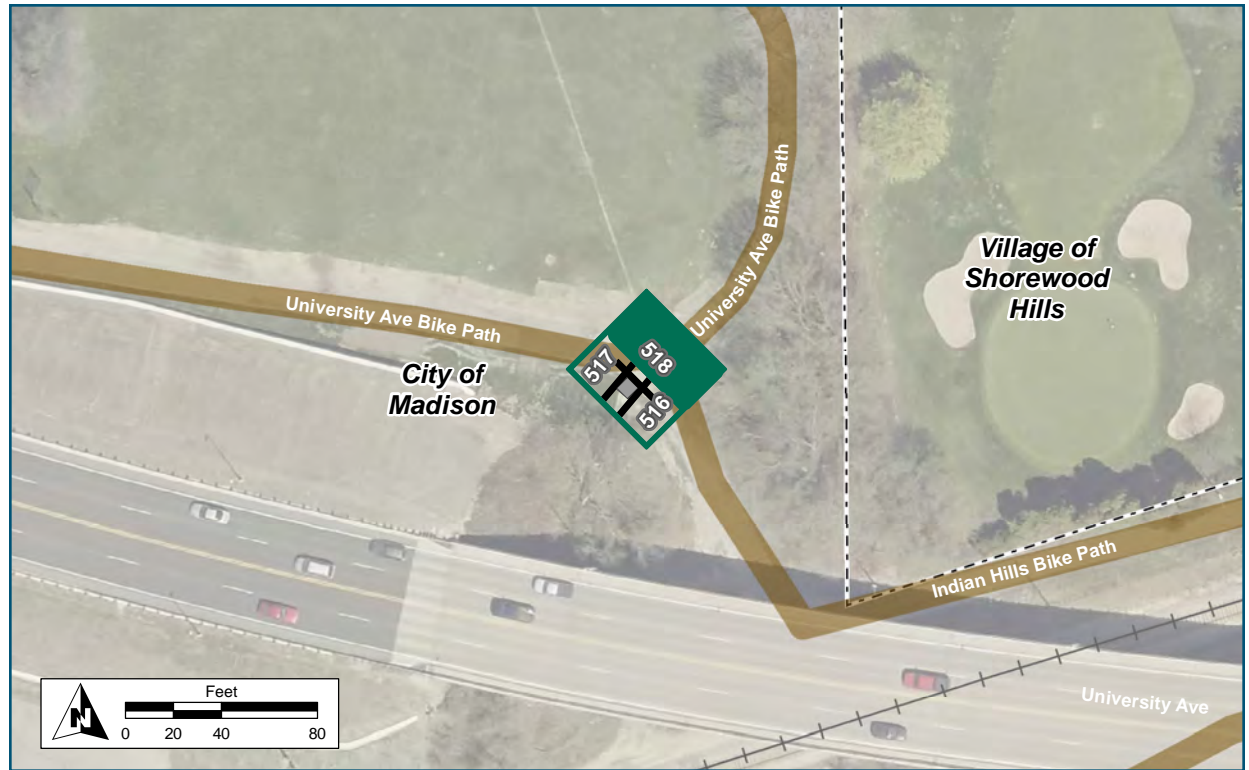
On University Avenue Sidepath
 At Indian Hills Park

Installation Details

Assembly Type Decision
 Jurisdiction City of Madison
 Post New
 Other Assemblies Back to back with #517,
 Perpendicular to #518
 Sign Facing Southeast
 Post Distance off Pavement 5 ft
 Distance from Intersection 0 ft

Placement Notes

Assembly ID: 518



Location

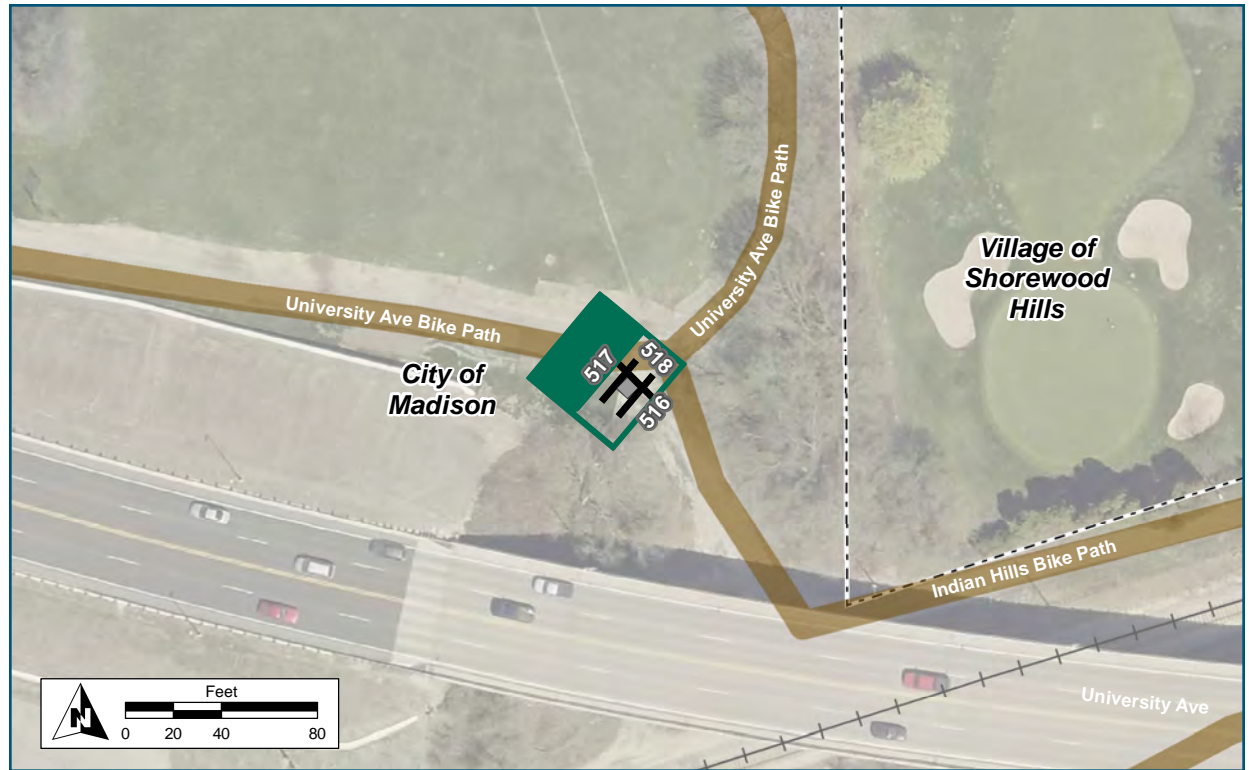
On University Avenue Sidepath
At Indian Hills Park

Installation Details

Assembly Type Decision
Jurisdiction City of Madison
Post New
Other Assemblies Perpendicular to #516 and #517
Sign Facing Northeast
Post Distance off Pavement 5 ft
Distance from Intersection 0 ft

Placement Notes

Assembly ID: 517



Location

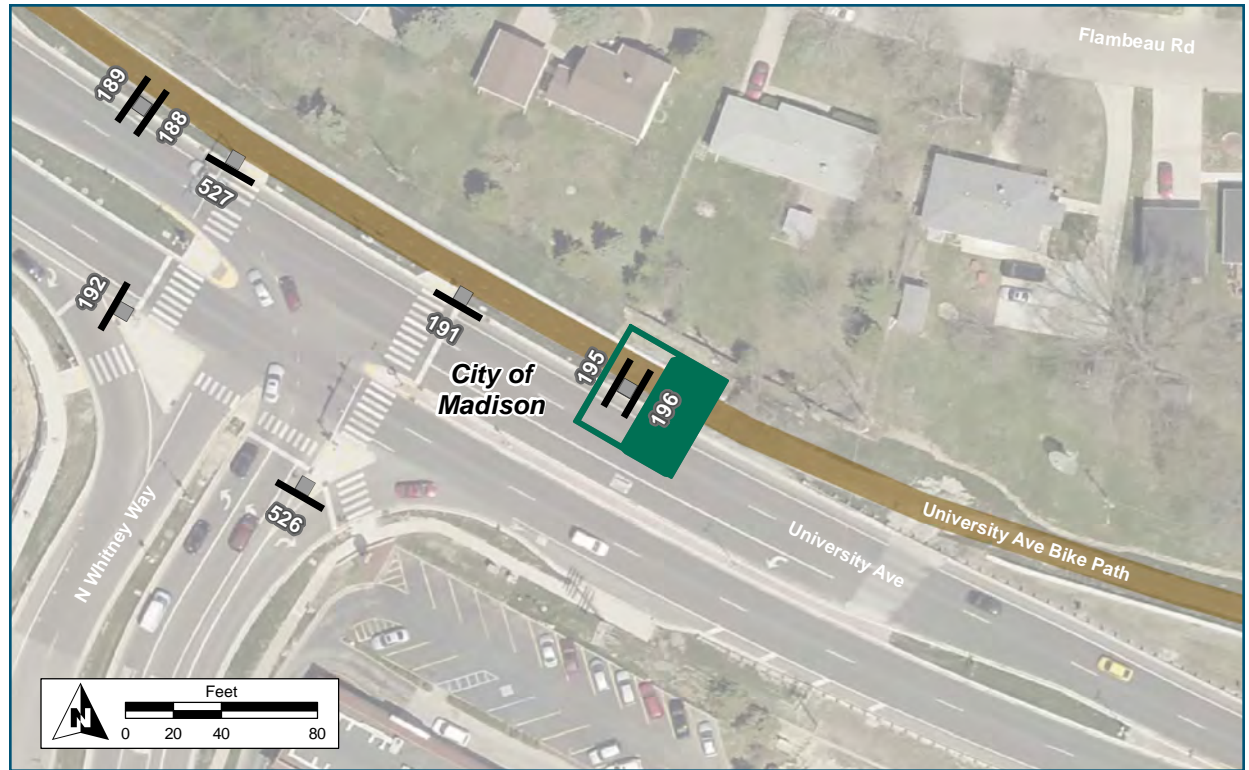
On University Avenue Sidepath
At Indian Hills Park

Installation Details

Assembly Type Decision
Jurisdiction City of Madison
Post New
Other Assemblies Back to back with #516,
Perpendicular to #518
Sign Facing Northwest
Post Distance off Pavement 5 ft
Distance from Intersection 0 ft

Placement Notes

Assembly ID: 196



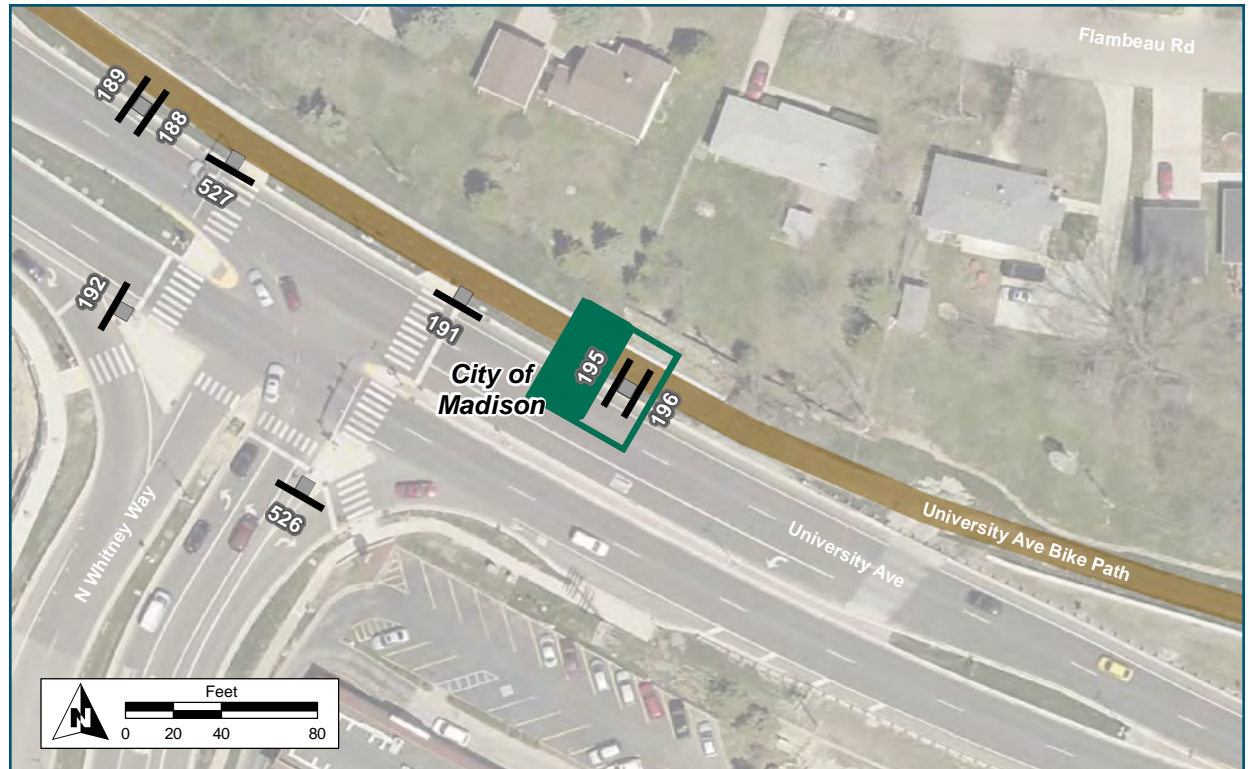
Location	
On	University Avenue Westbound
At	East of Whitney Way
Installation Details	
Assembly Type	Decision
Jurisdiction	Dane County Highway
Post	New
Other Assemblies	Back to Back with #195
Sign Facing	Southwest
Post Distance off Pavement	3 ft from sidepath
Distance from Intersection	85 feet east of crosswalk
Placement Notes	



Assembly ID: 195

 Shorewood Hills 1.2 mi
7 min

 Dwtn Madison 3.7 mi
22 min



Location

On University Avenue Westbound
At East of Whitney Way

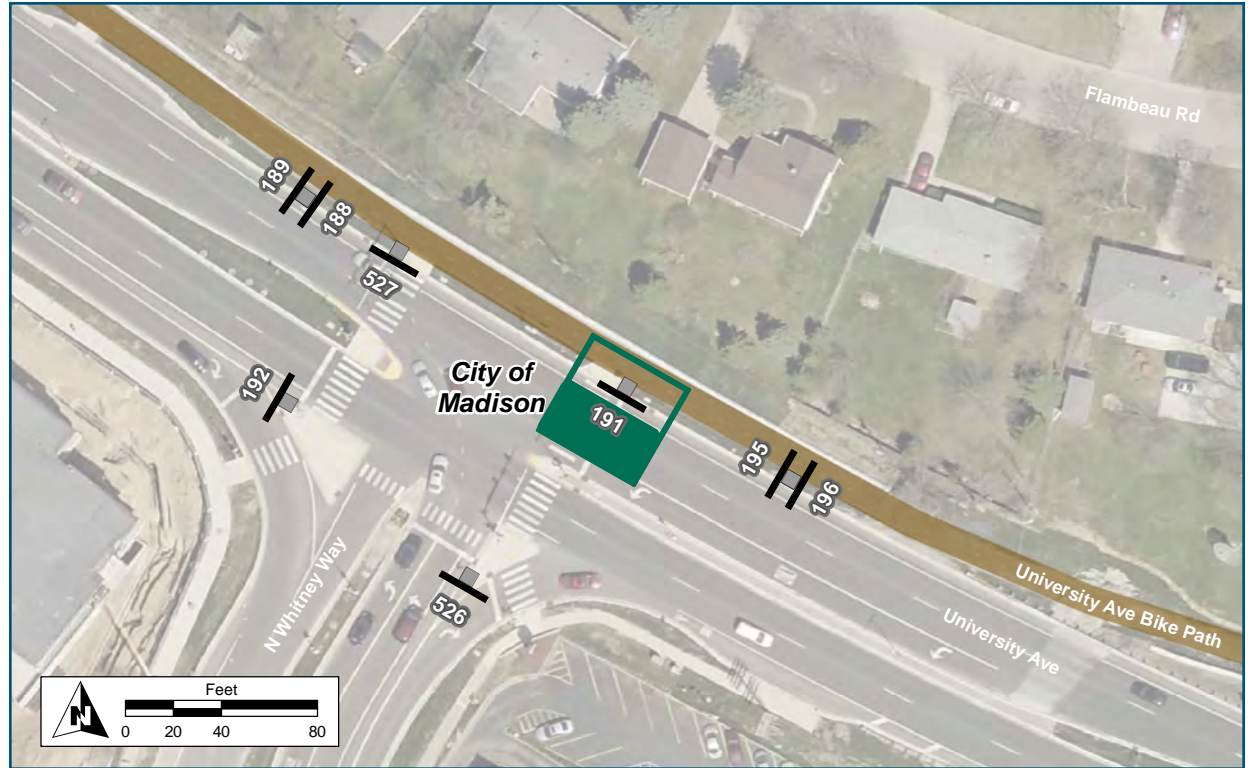
Installation Details

Assembly Type Confirmation
Jurisdiction Dane County Highway
Post New
Other Assemblies Back to Back with #196
Sign Facing Southeast
Post Distance off Pavement 3 ft from sidepath
Distance from Intersection 85 feet east of crosswalk

Placement Notes



Assembly ID: 191



Location

On University Avenue Westbound
 At North of Whitney Way

Installation Details

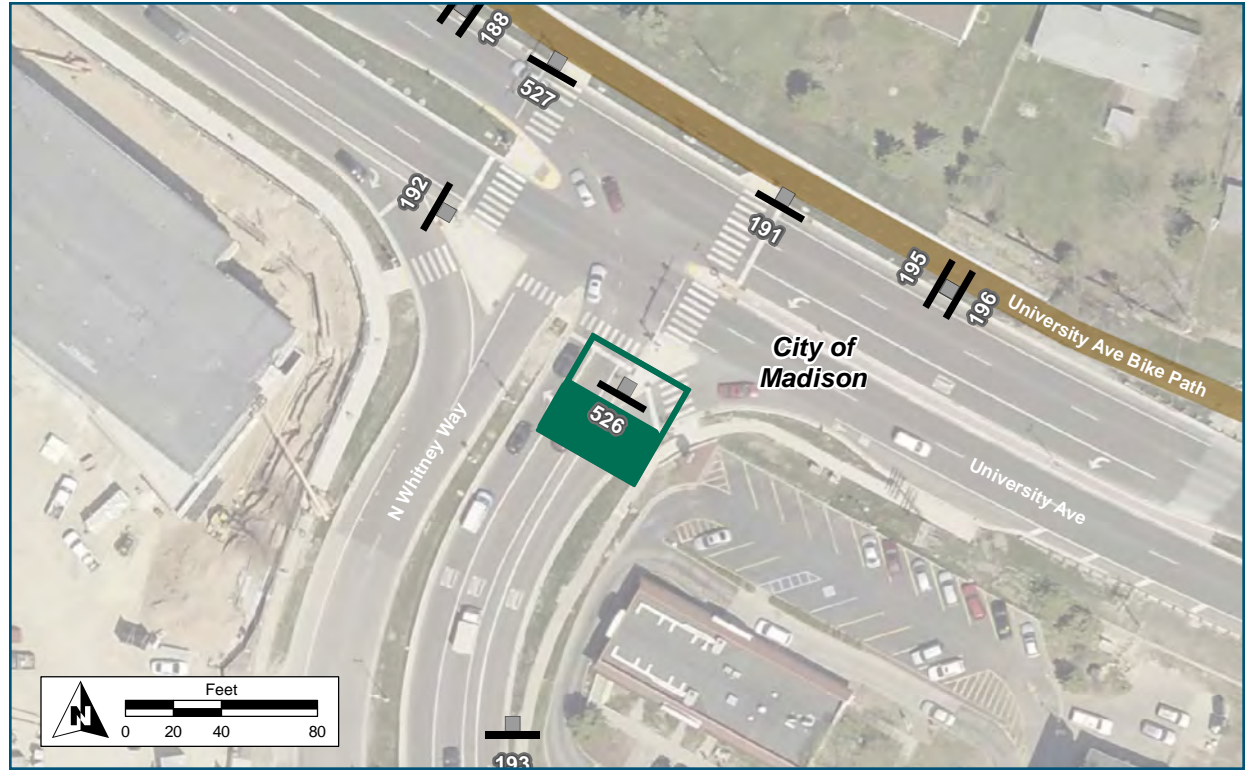
Assembly Type Decision
 Jurisdiction Dane County Highway
 Post Existing
 Other Assemblies None
 Sign Facing Southwest
 Post Distance off Pavement 3 ft from curb
 Distance from Intersection 0 ft from stop bar

Placement Notes

Place on traffic signal pole, above pedestrian signal head.



Assembly ID: 526



Location	
On	Whitney Way Northbound
At	University Avenue
Installation Details	
Assembly Type	Decision
Jurisdiction	City of Madison
Post	Existing
Other Assemblies	Diamond Warning Sign
Sign Facing	Southwest
Post Distance off Pavement	2 ft from curb
Distance from Intersection	5-6 ft south of stop line
Placement Notes	
Mount on traffic signal post at the tip of the porkchop island.	



Assembly ID: 193



Location	
On	Whitney Way Northbound
At	South of University Avenue
Installation Details	
Assembly Type	Decision
Jurisdiction	City of Madison
Post	New
Other Assemblies	None
Sign Facing	South
Post Distance off Pavement	3 ft from curb
Distance from Intersection	140-150 feet S of crosswalk and 40 feet N of the start of the solid bike lane
Placement Notes	



Assembly ID: 192



Location

On University Avenue Eastbound
At Whitney Way

Installation Details

Assembly Type	Turn
Jurisdiction	Dane County Highway
Post	Existing
Other Assemblies	None
Sign Facing	Northwest
Post Distance off Pavement	3 ft from curb
Distance from Intersection	0 ft

Placement Notes

Place on existing traffic signal post. Mount at same height as pedestrian signal head to maintain vertical clearance.



Assembly ID: 527



Location

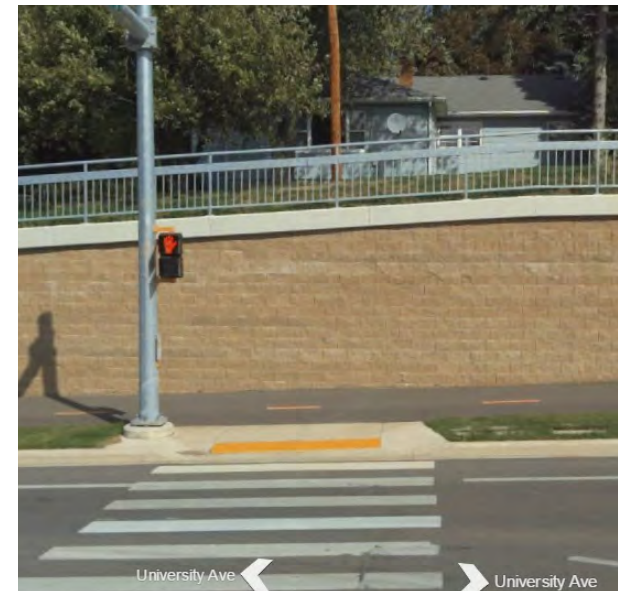
On University Avenue Westbound
At North of Whitney Way

Installation Details

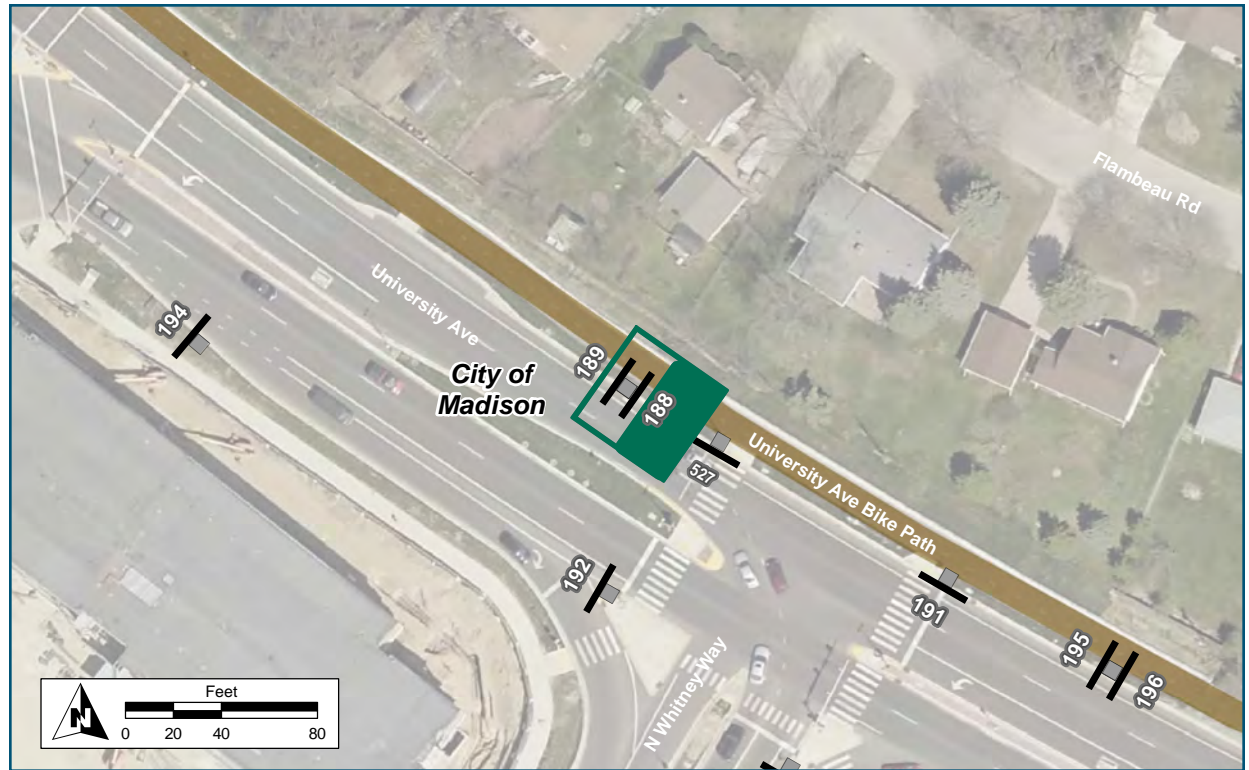
Assembly Type	Decision
Jurisdiction	Dane County Highway
Post	Existing
Other Assemblies	None
Sign Facing	Southwest
Post Distance off Pavement	3 ft from curb
Distance from Intersection	1 ft W of crosswalk

Placement Notes

Place on existing traffic signal post, above pedestrian signal head.



Assembly ID: 188



Location	
On	University Avenue Westbound
At	East of Whitney Way
Installation Details	
Assembly Type	Confirmation
Jurisdiction	Dane County Highway
Post	Existing
Other Assemblies	Existing "Bike Lane" Sign, Back to back with #189
Sign Facing	Southeast
Post Distance off Pavement	3 ft from curb
Distance from Intersection	45 feet west of crosswalk
Placement Notes	
Place new sign panels below existing Bike Lane sign.	



Assembly ID: 189



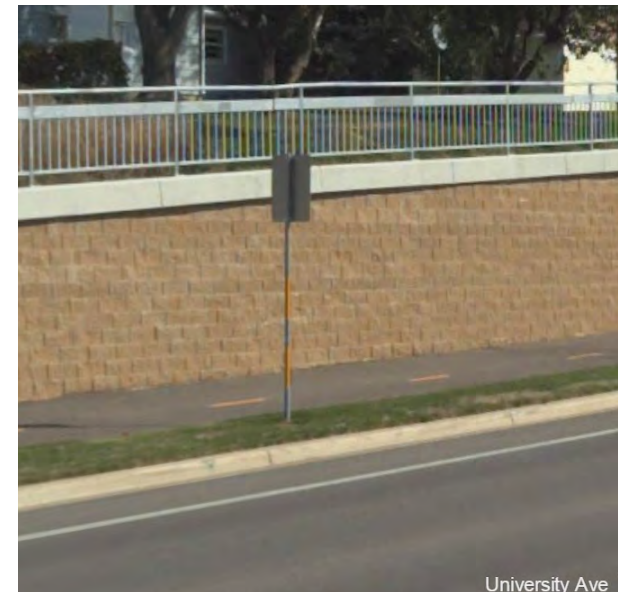
Location

On University Avenue Westbound
At East of Whitney Way

Installation Details

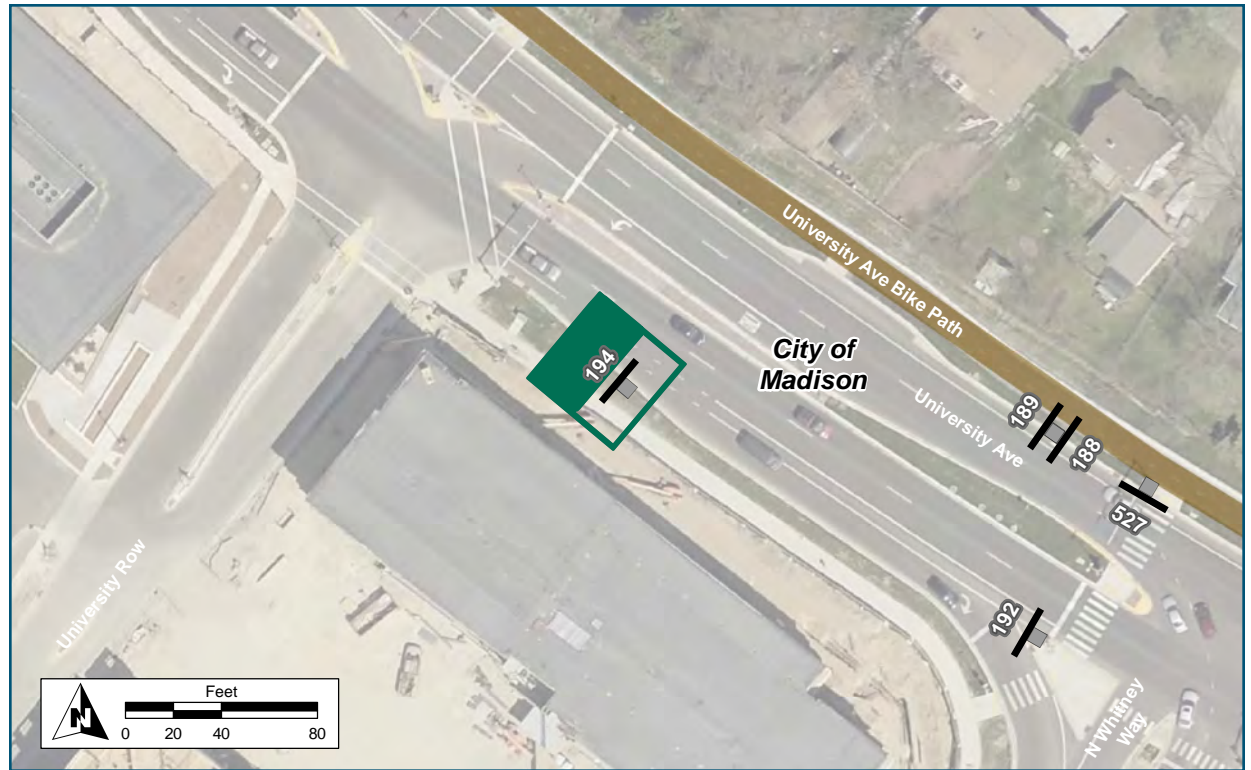
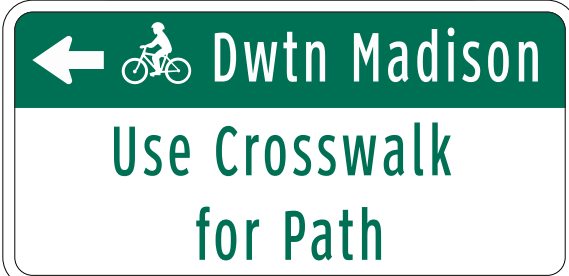
Assembly Type Decision
Jurisdiction Dane County Highway
Post Existing
Other Assemblies Back to back with #188
Sign Facing Northwest
Post Distance off Pavement 3 ft from curb
Distance from Intersection 45 feet west of crosswalk

Placement Notes



University Ave

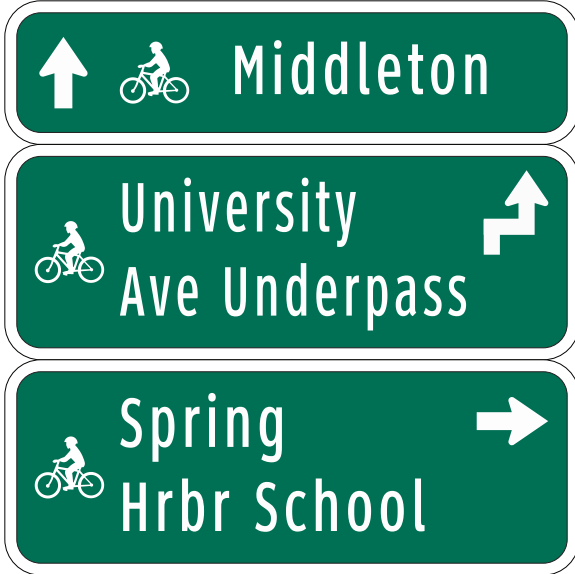
Assembly ID: 194



Location	
On	University Avenue Eastbound
At	West of Whitney Way
Installation Details	
Assembly Type	Decision
Jurisdiction	Dane County Highway
Post	New
Other Assemblies	None
Sign Facing	Northwest
Post Distance off Pavement	4 ft from curb
Distance from Intersection	Install 25 feet east of "Whitney Way" sign
Placement Notes	



Assembly ID: 519



Location

On University Avenue Path
At Southwest of Craig Avenue

Installation Details

Assembly Type	Decision
Jurisdiction	Dane County Highway
Post	New
Other Assemblies	Back to back with #520
Sign Facing	Southeast
Post Distance off Pavement	2 ft from curb
Distance from Intersection	50 feet southwest of crosswalk

Placement Notes



Assembly ID: 530

Old Middleton Rd 0.5 mi
3 min

Shorewood Hills 1.5 mi
9 min

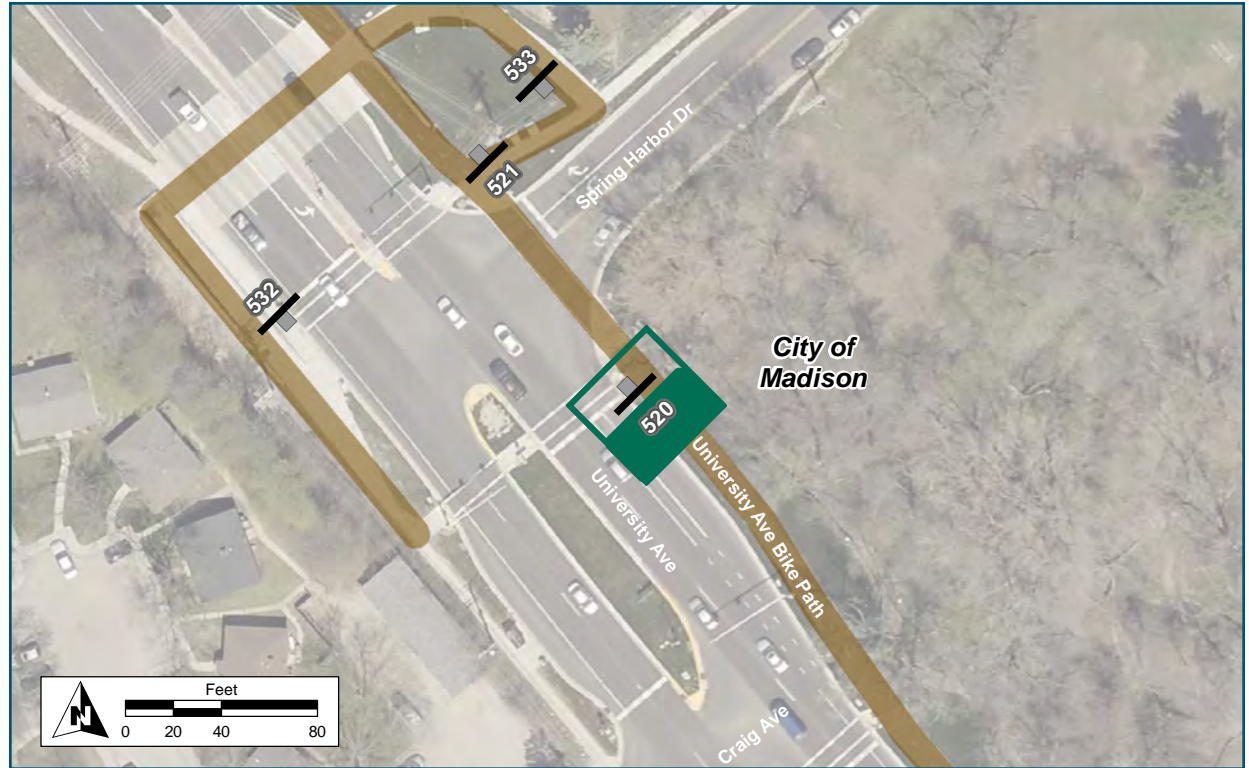
Dwtn Madison 4.1 mi
25 min



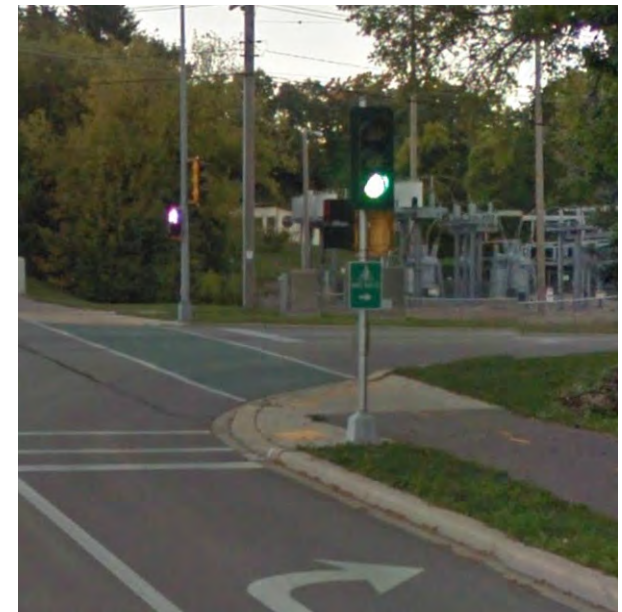
Location	
On	University Avenue Path
At	Southwest of Craig Avenue
Installation Details	
Assembly Type	Confirmation
Jurisdiction	Dane County Highway
Post	New
Other Assemblies	Back to back with #519
Sign Facing	Northwest
Post Distance off Pavement	2 ft from curb
Distance from Intersection	50 feet southwest of crosswalk
Placement Notes	



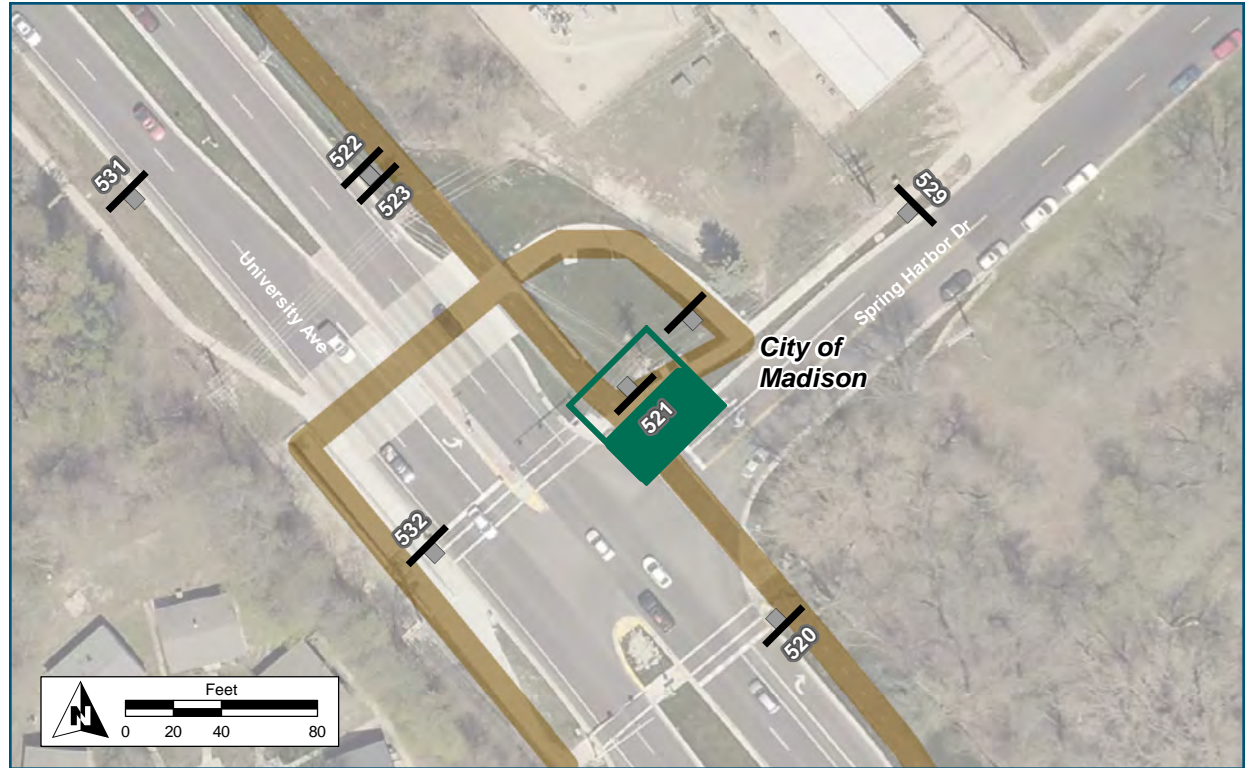
Assembly ID: 520



Location	
On	University Avenue Path
At	Spring Harbor Drive
Installation Details	
Assembly Type	Decision
Jurisdiction	Dane County Highway
Post	Existing
Other Assemblies	Existing "BIKE ROUTE" sign
Sign Facing	Southeast
Post Distance off Pavement	3 ft from curb
Distance from Intersection	0 ft
Placement Notes	
Remove existing "BIKE ROUTE" sign.	



Assembly ID: 521



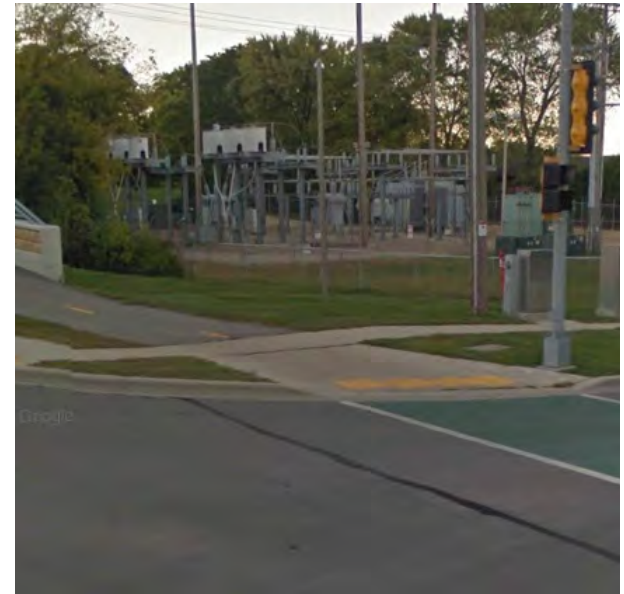
Location

On University Avenue Sidewalk
At North of Spring Harbor Drive

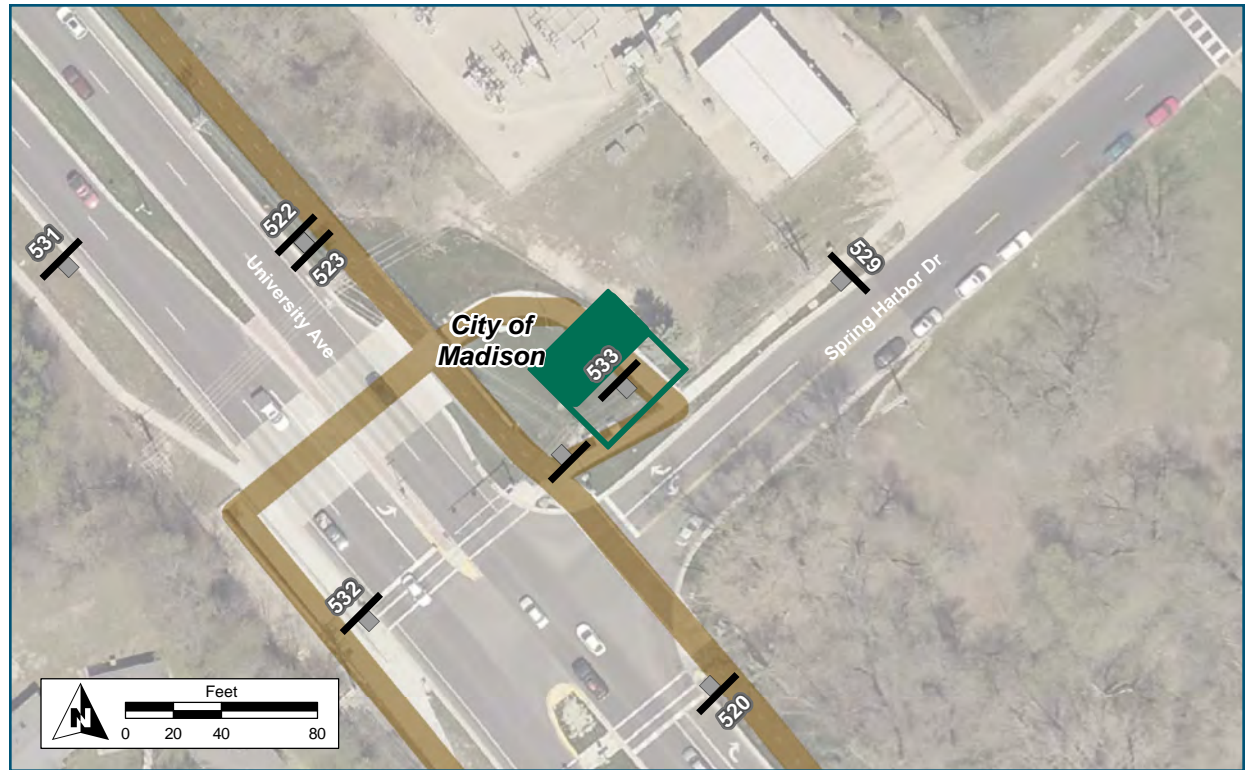
Installation Details

Assembly Type	Decision
Jurisdiction	City of Madison
Post	New
Other Assemblies	None
Sign Facing	Southeast
Post Distance off Pavement	3 ft east of sidewalk
Distance from Intersection	3 ft north of sidewalk

Placement Notes



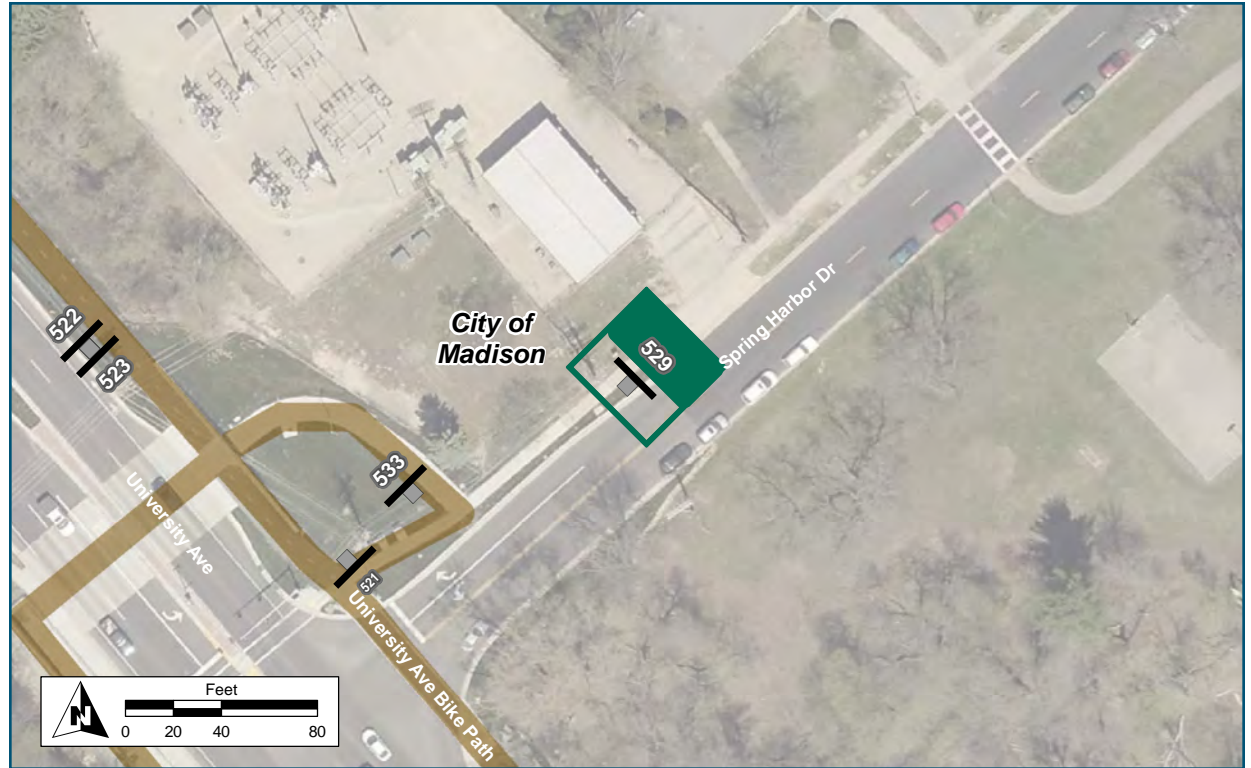
Assembly ID: 533



Location	
On	Underpass Ramp
At	Spring Harbor Drive
Installation Details	
Assembly Type	Decision
Jurisdiction	City of Madison
Post	Existing
Other Assemblies	"No Parking" sign
Sign Facing	Northwest
Post Distance off Pavement	4 ft from path
Distance from Intersection	15 feet northwest of sidewalk and path junction.
Placement Notes	



Assembly ID: 529



Location

On Spring Harbor Drive

At Northeast of University Ave

Installation Details

Assembly Type Decision

Jurisdiction City of Madison

Post Existing

Other Assemblies "No Parking" sign

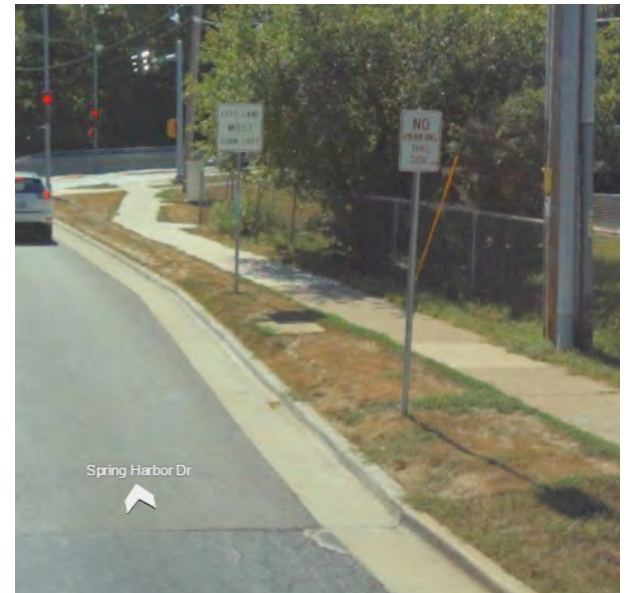
Sign Facing Northeast

Post Distance off Pavement 3 ft from curb

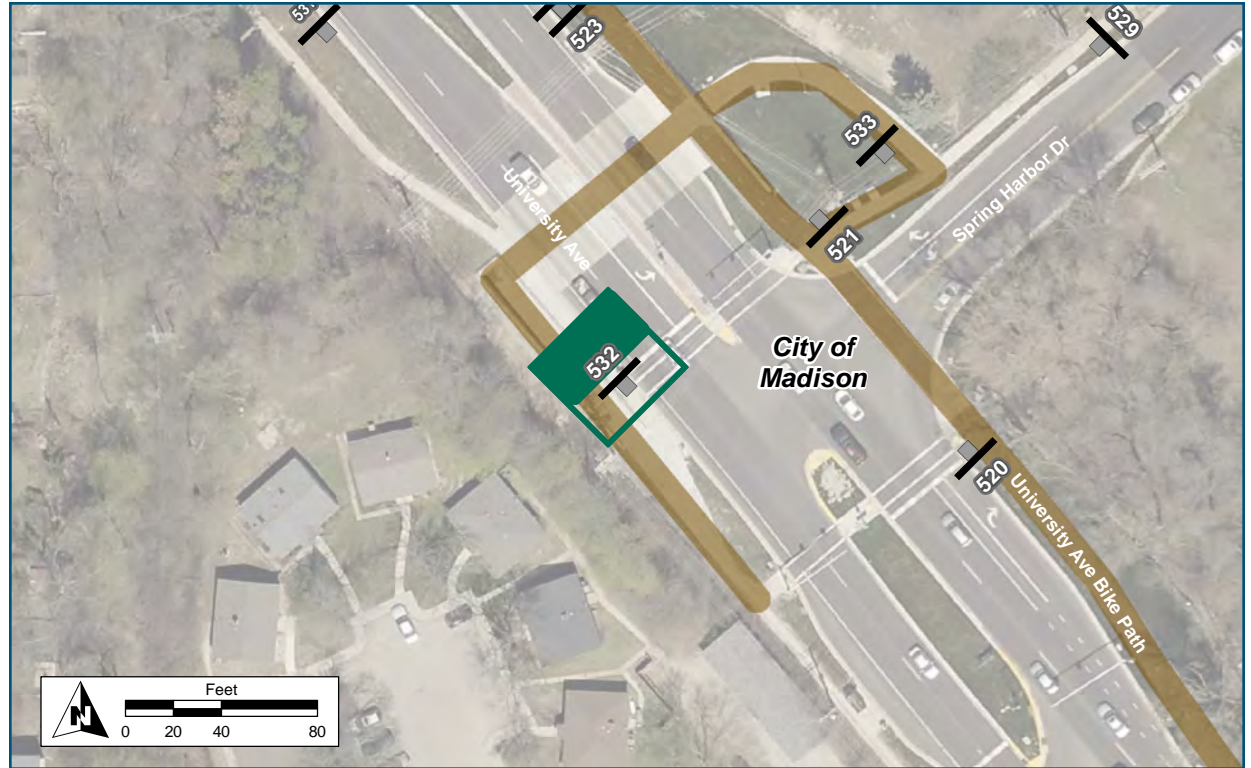
Distance from Intersection 140 northeast of crosswalk

Placement Notes

Add this assembly to top of post, move "No Parking" sign down. May need longer post.



Assembly ID: 532



Location

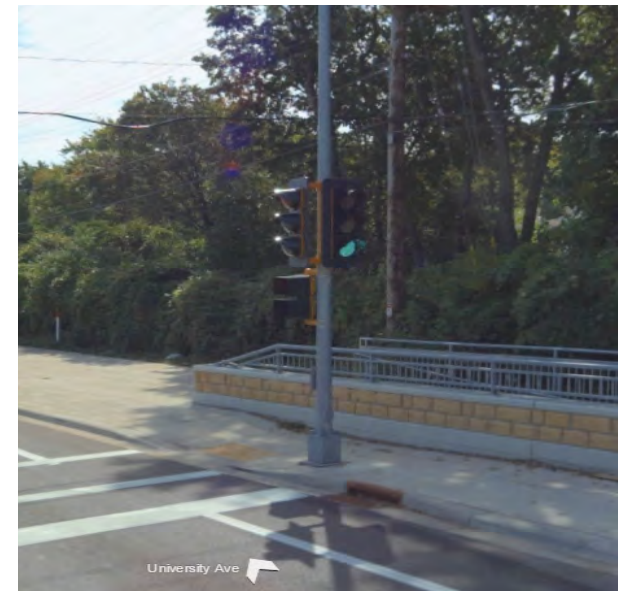
On University Avenue
At Southwest of Spring Harbor

Installation Details




Assembly Type Decision
Jurisdiction Dane County Highway
Post Existing
Other Assemblies None
Sign Facing Northwest
Post Distance off Pavement 2 ft from curb
Distance from Intersection 0 ft

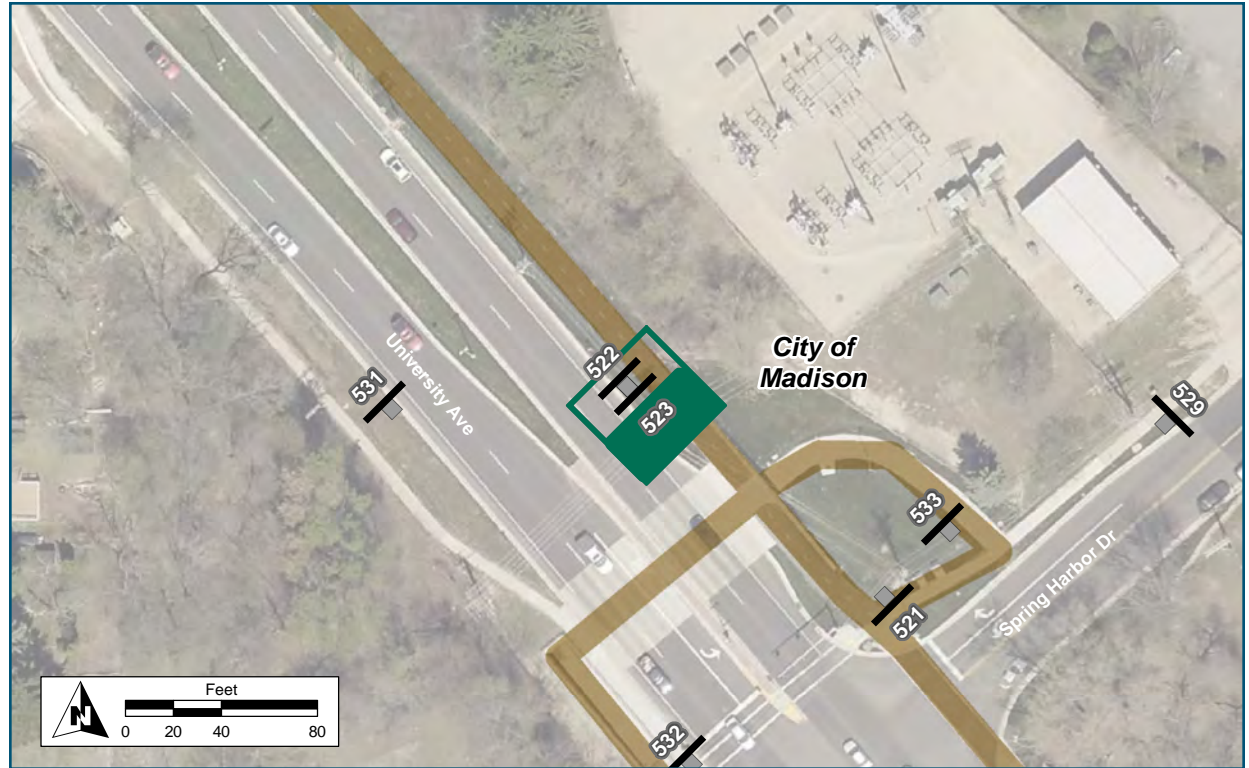
Placement Notes

Install above traffic signals.



Assembly ID: 523

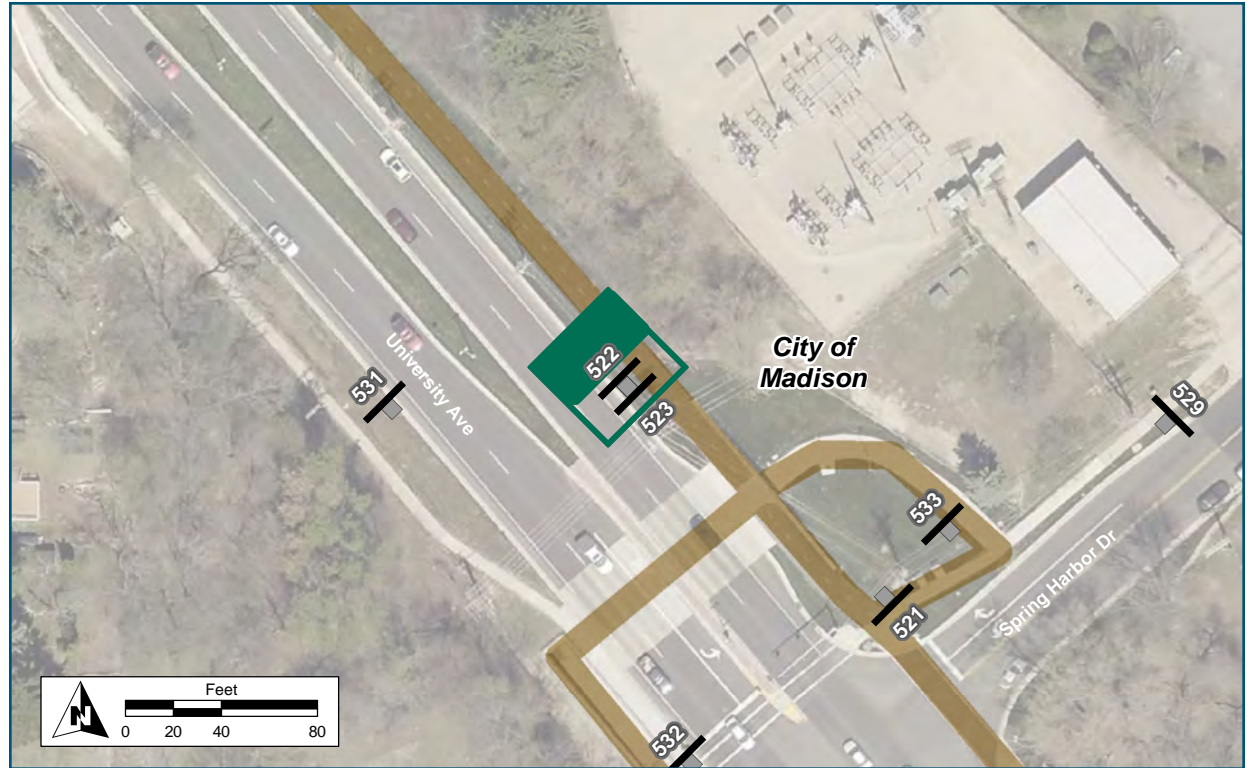
	Capital Ave	0.4 mi 2 min
	Allen Blvd	1.0 mi 6 min
	Dwtn Middleton	2.6 mi 16 min



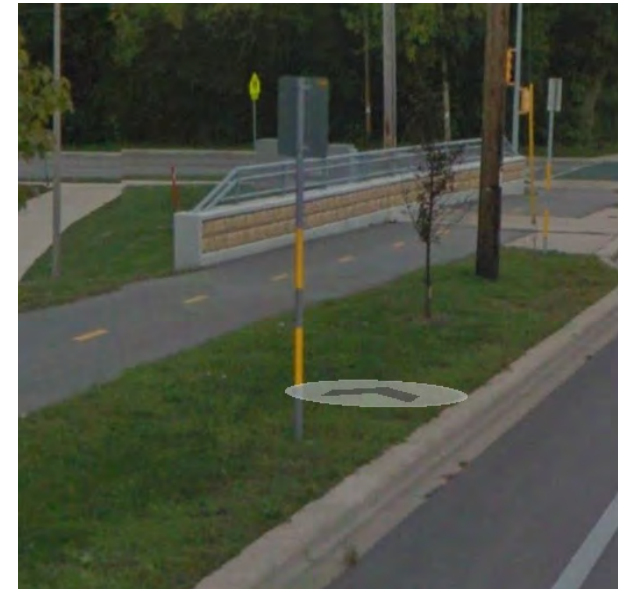
Location	
On	University Avenue Sidepath
At	Northwest of Underpass
Installation Details	
Assembly Type	Confirmation
Jurisdiction	Dane County Highway
Post	New
Other Assemblies	Back to back with #522
Sign Facing	Southeast
Post Distance off Pavement	3 ft from path
Distance from Intersection	About 140 feet northwest of crosswalk
Placement Notes	



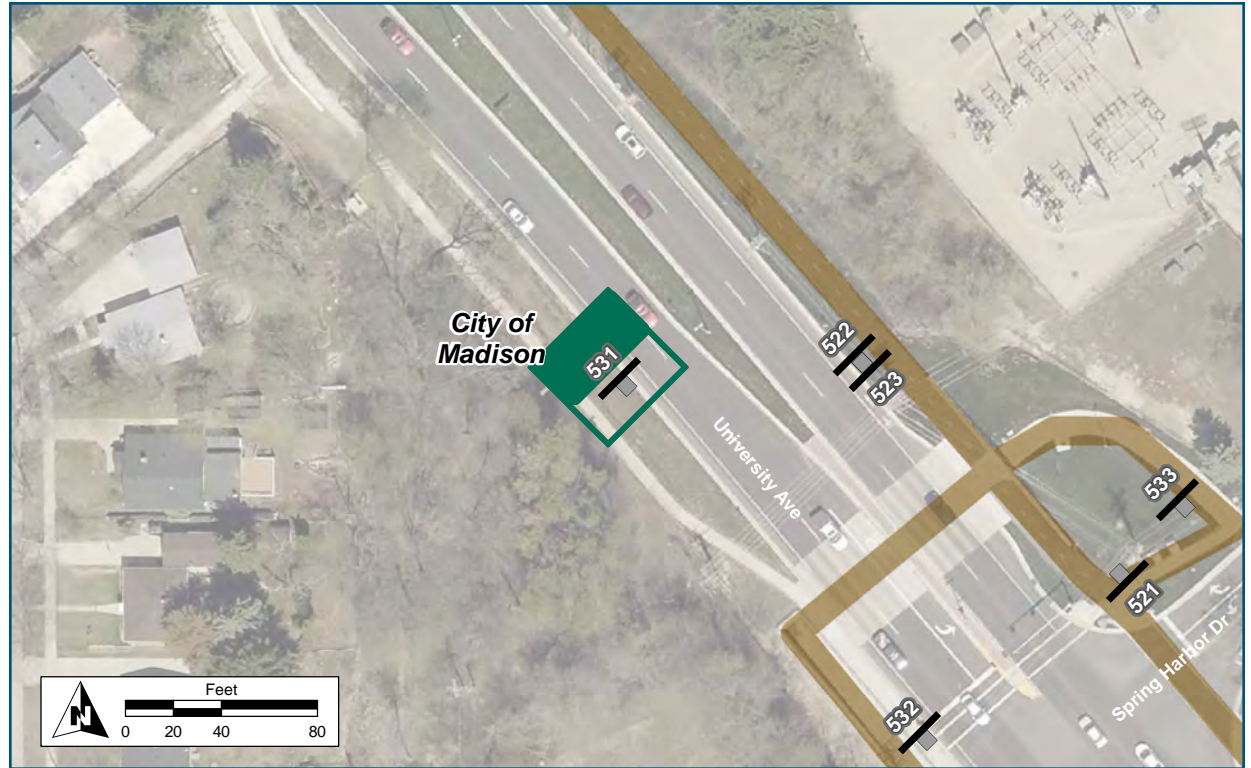
Assembly ID: 522



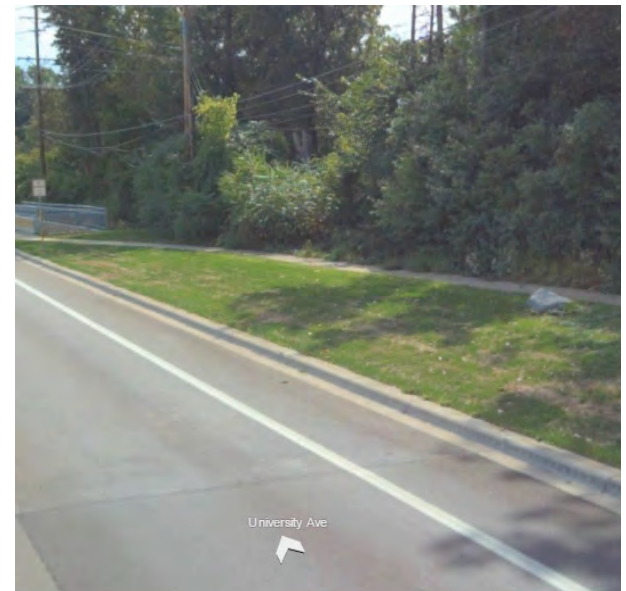
Location	
On	University Avenue Sidepath
At	Northwest of Underpass
Installation Details	
Assembly Type	Decision
Jurisdiction	Dane County Highway
Post	New
Other Assemblies	Back to back with #523
Sign Facing	Northwest
Post Distance off Pavement	3 ft from path
Distance from Intersection	About 140 feet northwest of crosswalk
Placement Notes	



Assembly ID: 531



Location	
On	University Ave
At	Northwest of Underpass
Installation Details	
Assembly Type	Decision
Jurisdiction	Dane County Highway
Post	New
Other Assemblies	None
Sign Facing	Northwest
Post Distance off Pavement	3ft from curb
Distance from Intersection	200 feet northwest of crosswalk
Placement Notes	



Assembly ID: 534



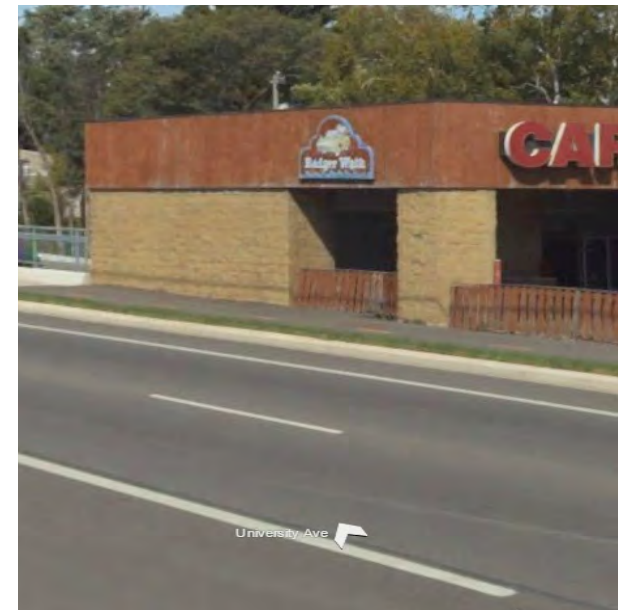
Location

On University Avenue Sidepath
At Southeast of Capital Avenue

Installation Details

Assembly Type	Decision
Jurisdiction	Dane County Highway
Post	New
Other Assemblies	Back to back with 535
Sign Facing	Southwest
Post Distance off Pavement	3 ft from sidepath
Distance from Intersection	50 feet southeast of crosswalk

Placement Notes

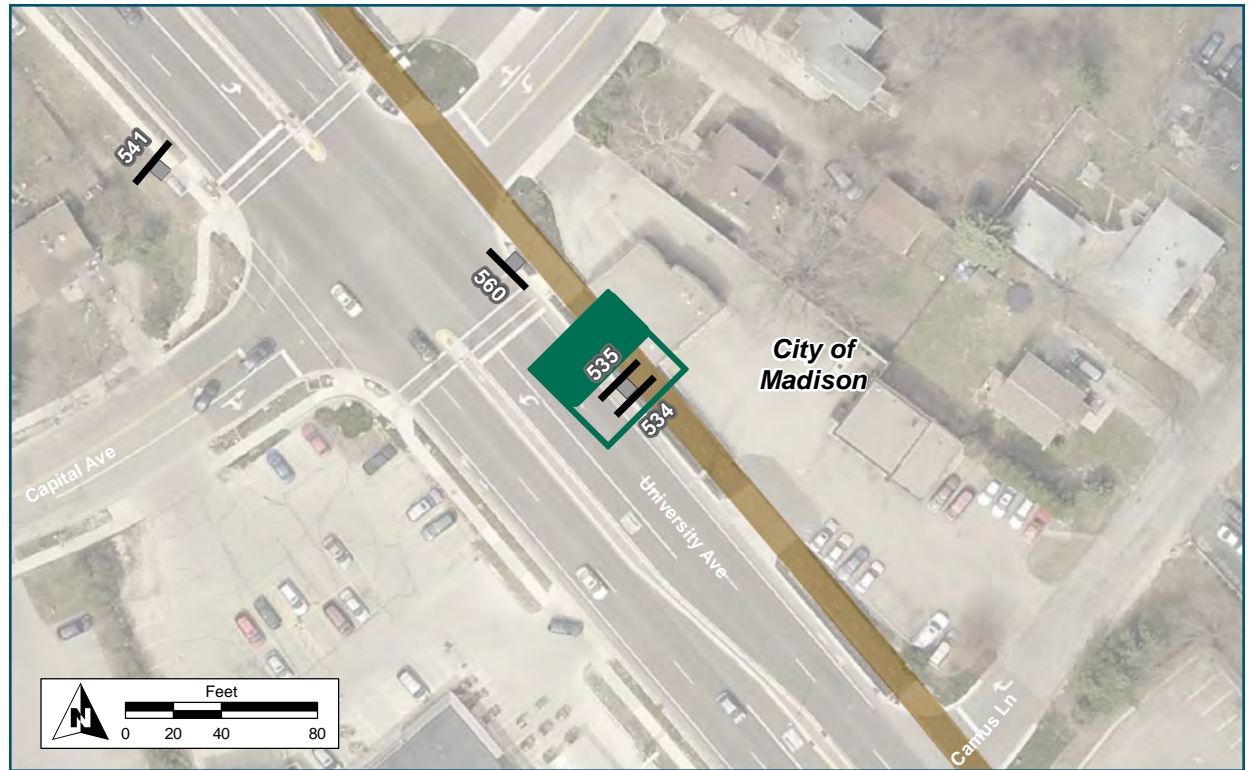


Assembly ID: 535

 **Spring** 0.4 mi
Hrbr School 2 min

 **Shorewood** 2 mi
Hills 12 min

 **Dwtn** 4.5 mi
Madison 27 min



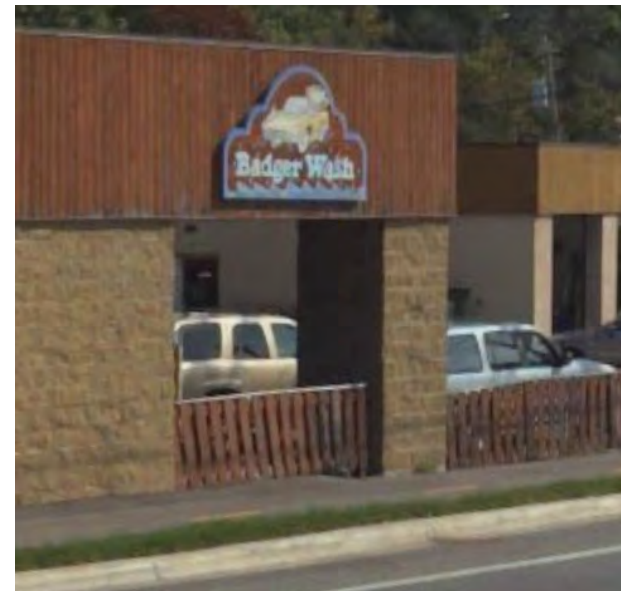
Location

On University Avenue Sidepath
At Southeast of Capital Avenue

Installation Details

Assembly Type Confirmation
Jurisdiction Dane County Highway
Post New
Other Assemblies Back to back with #534
Sign Facing Northwest
Post Distance off Pavement 3 ft from sidepath
Distance from Intersection 50 feet southeast of crosswalk

Placement Notes



Assembly ID: 539



Access Sidepath by
Crossing
University Ave



Location

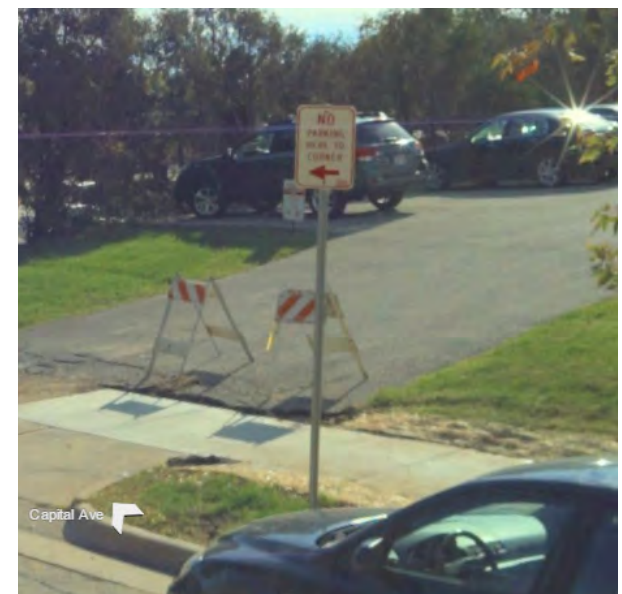
On Capital Avenue
At Southwest of University Ave

Installation Details

Assembly Type Decision
Jurisdiction City of Madison
Post Replace
Other Assemblies Existing "No Parking" sign
Sign Facing West
Post Distance off Pavement 3 ft from curb
Distance from Intersection

Placement Notes

Mount above existing "No Parking" sign. Use longer post to maintain vertical clearance.



Assembly ID: 560



Location

On University Avenue
At Southwest of Capital Ave

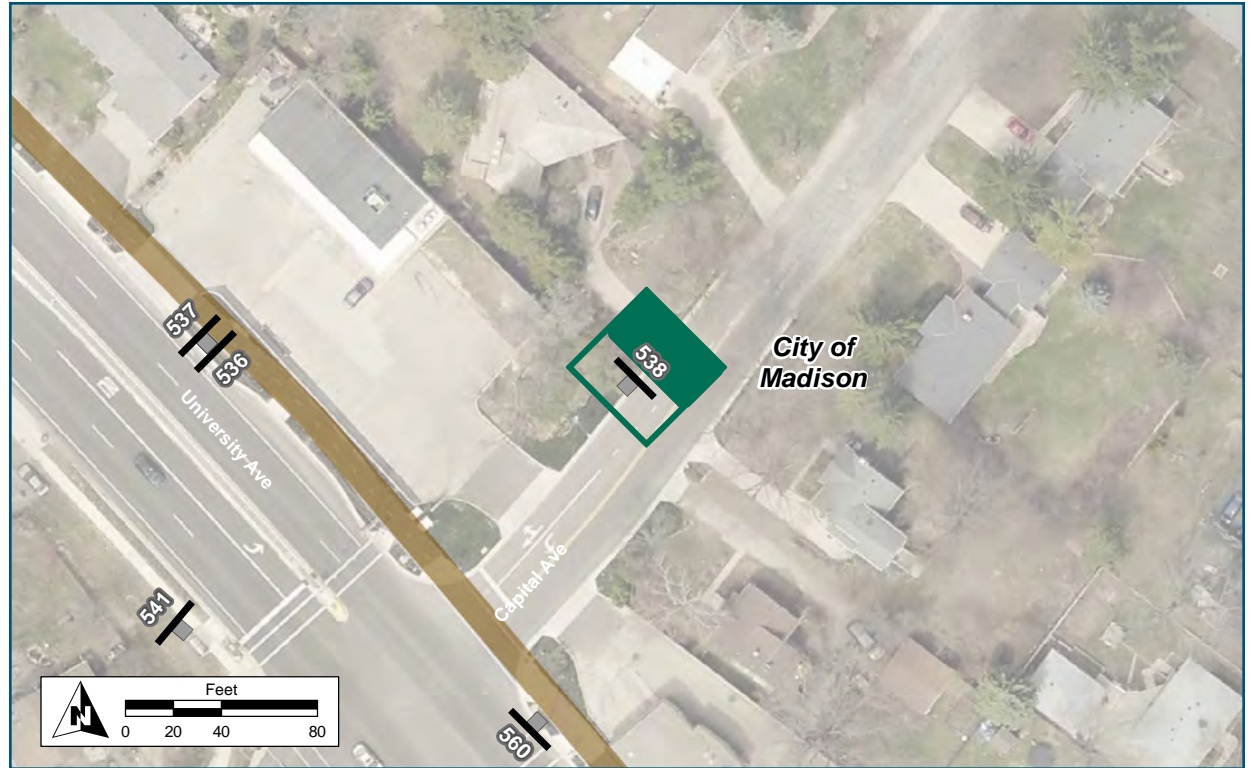
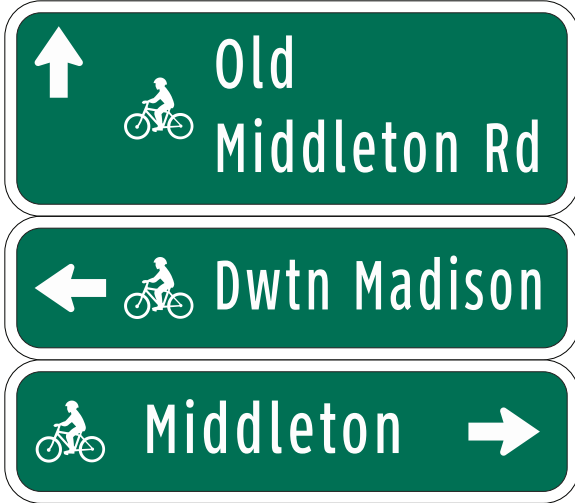
Installation Details

Assembly Type	Decision
Jurisdiction	Dane County Highway
Post	New
Other Assemblies	None
Sign Facing	Southwest
Post Distance off Pavement	3 ft
Distance from Intersection	10 ft northwest of crosswalk

Placement Notes



Assembly ID: 538



Location

On Capital Avenue
At Northeast of University Ave

Installation Details

Assembly Type	Decision
Jurisdiction	City of Madison
Post	New
Other Assemblies	None
Sign Facing	Northeast
Post Distance off Pavement	2 ft from curb
Distance from Intersection	About 110 feet northeast of sidepath crosswalk

Placement Notes



Assembly ID: 541



Location	
On	University Avenue Eastbound
At	Northwest of Capital Avenue
Installation Details	
Assembly Type	Decision
Jurisdiction	Dane County Highway
Post	New
Other Assemblies	None
Sign Facing	Northwest
Post Distance off Pavement	3 ft SW of sidewalk
Distance from Intersection	4 feet NW of bus shelter,, 25 feet northwest of crosswalk
Placement Notes	



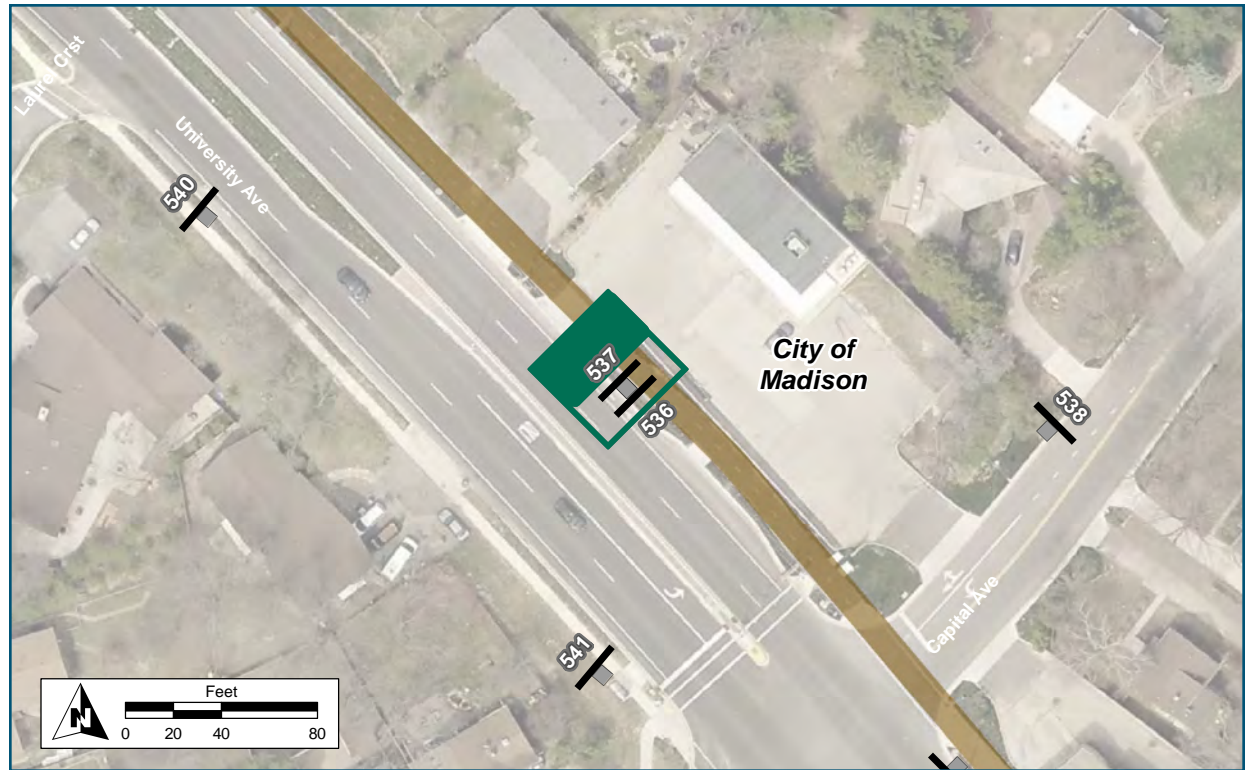
Assembly ID: 536



Location	
On	University Avenue Sidewalk
At	Northwest of Capital Avenue
Installation Details	
Assembly Type	Confirmation
Jurisdiction	Dane County Highway
Post	Existing
Other Assemblies	Existing "Bike Lane" sign, Back to back with #537
Sign Facing	Southeast
Post Distance off Pavement	3 ft from sidewalk
Distance from Intersection	105 feet NW of Capital Ave sidewalk. May need longer post.
Placement Notes	
Place under existing "Bike Lane" sign.	



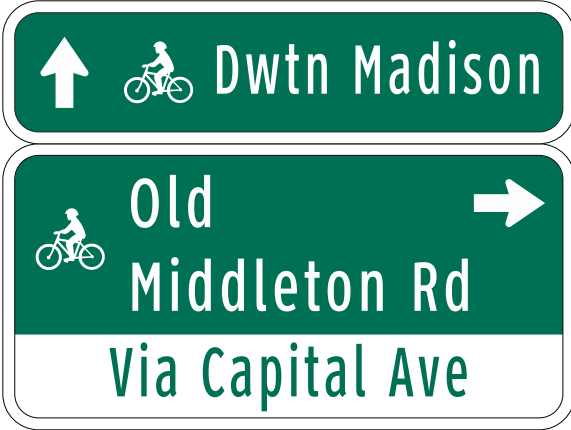
Assembly ID: 537



Location	
On	University Avenue Sidepath
At	Northwest of Capital Avenue
Installation Details	
Assembly Type	Decision
Jurisdiction	Dane County Highway
Post	Existing
Other Assemblies	Back to back with #536 and bike lane sign
Sign Facing	Northwest
Post Distance off Pavement	3 ft from sidepath
Distance from Intersection	105 feet NW of Capital Ave sidewalk. May need longer post.
Placement Notes	



Assembly ID: 540



Location

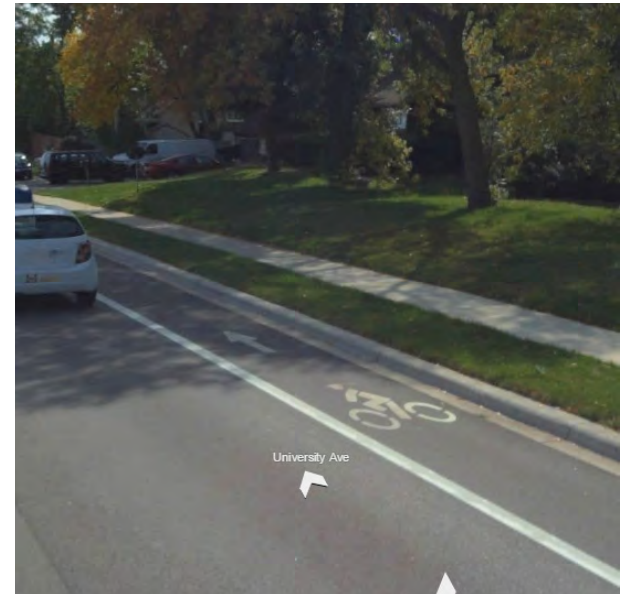
On University Avenue Eastbound
At Northwest of Capital Avenue

Installation Details

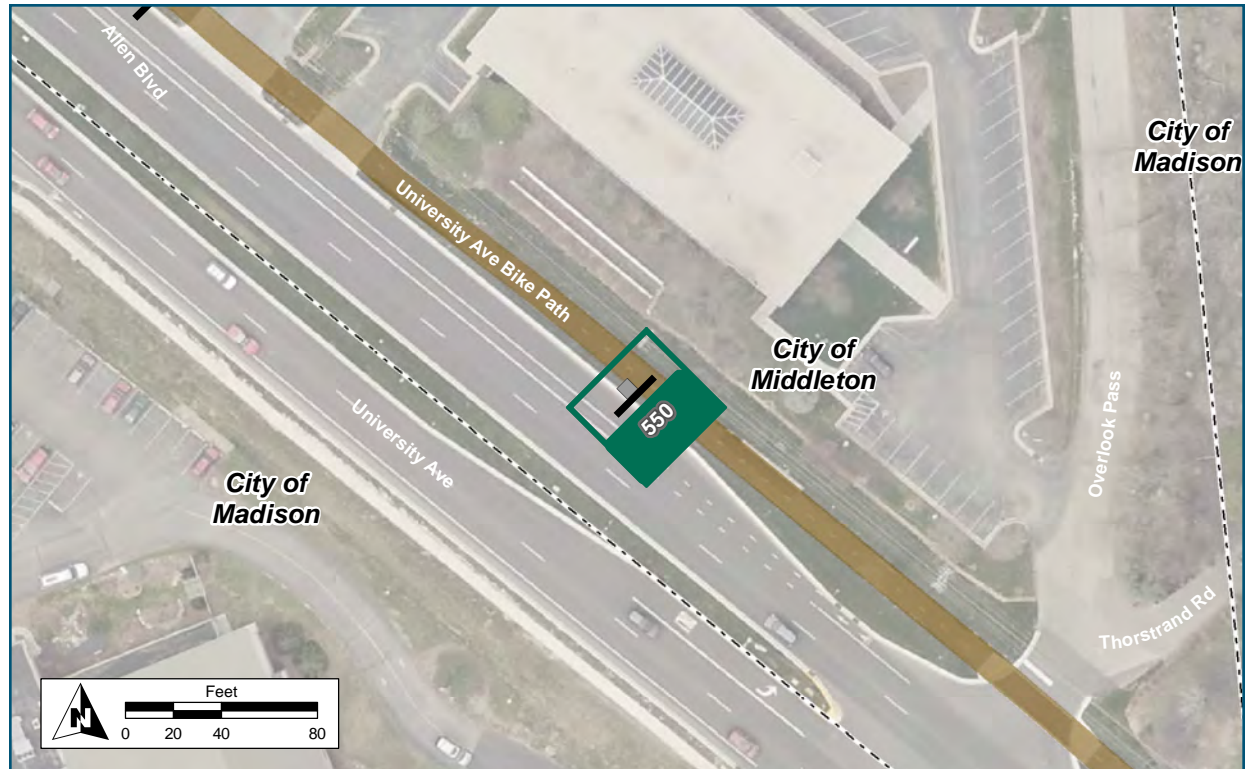
Assembly Type	Decision
Jurisdiction	Dane County Highway
Post	New
Other Assemblies	None
Sign Facing	Northwest
Post Distance off Pavement	3 ft from curb
Distance from Intersection	280 feet northwest of crosswalk

Placement Notes

Install next to painted bike lane symbol.



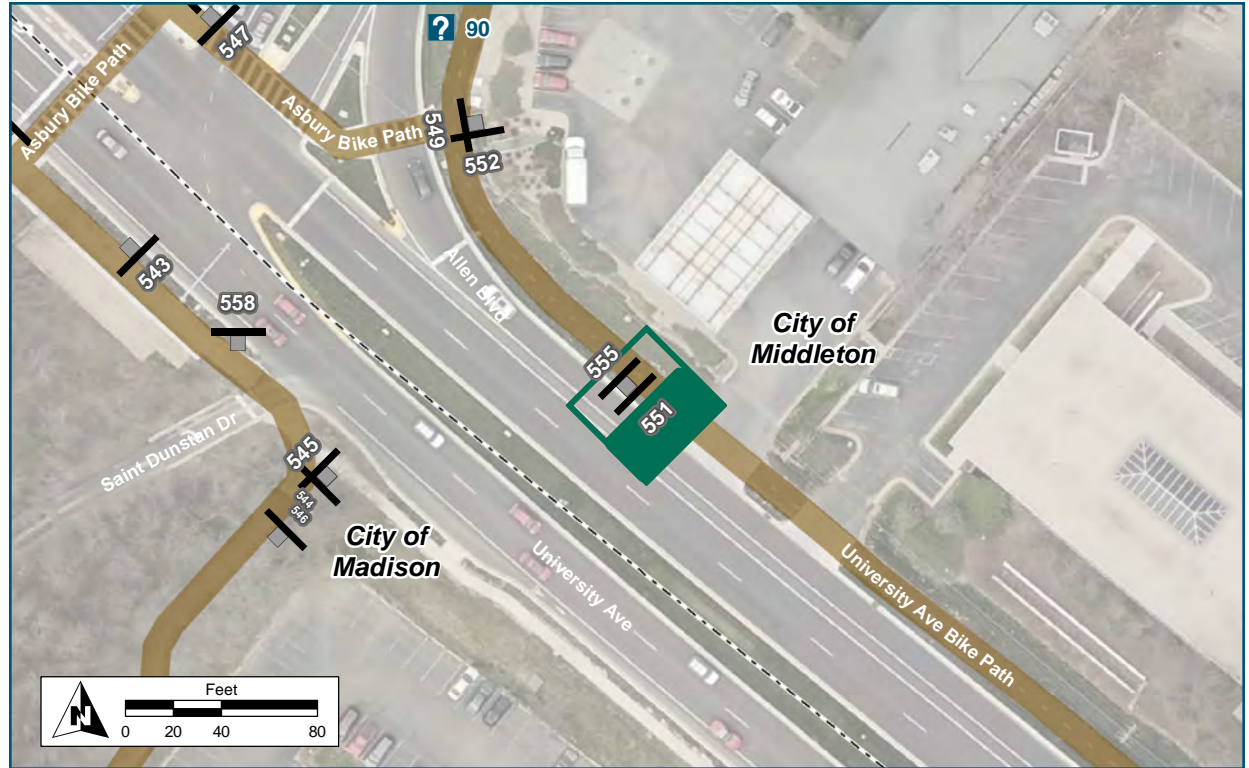
Assembly ID: 550



Location	
On	University Avenue Westbound
At	Northwest of Overlook Pass
Installation Details	
Assembly Type	Decision
Jurisdiction	Dane County Highway
Post	Replace
Other Assemblies	Existing "No Parking" sign
Sign Facing	Southeast
Post Distance off Pavement	3 ft from sidepath
Distance from Intersection	About 200 ft NW of Overlook pass
Placement Notes	
Place signs above existing "No Parking" sign. Replace with longer pole to maintain vertical clearance.	





Assembly ID: 551

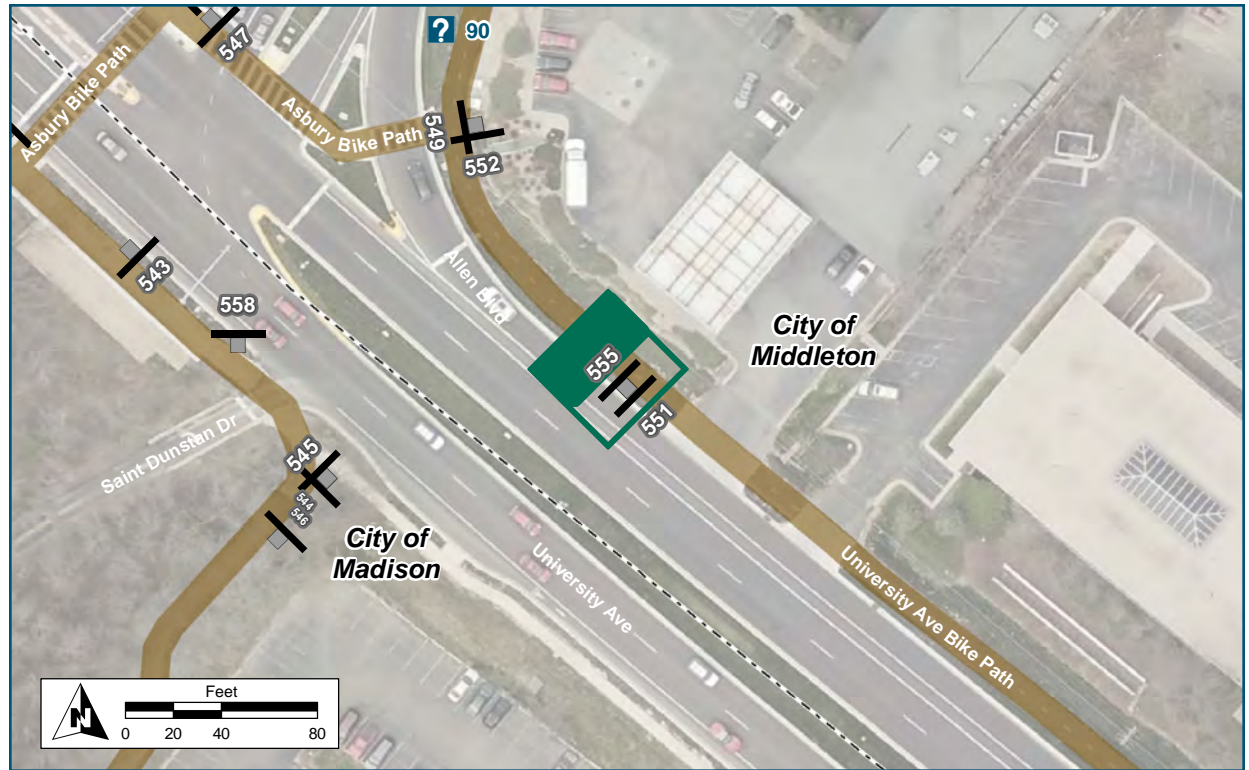


Location	
On	University Avenue Westbound
At	Southeast of Allen Boulevard
Installation Details	
Assembly Type	Decision
Jurisdiction	Dane County Highway
Post	New
Other Assemblies	Back to back with #555
Sign Facing	Southeast
Post Distance off Pavement	3 ft from sidepath
Distance from Intersection	20-25 feet west of driveway. 25-30 feet east of "No Engine Braking" sign.
Placement Notes	



Assembly ID: 555

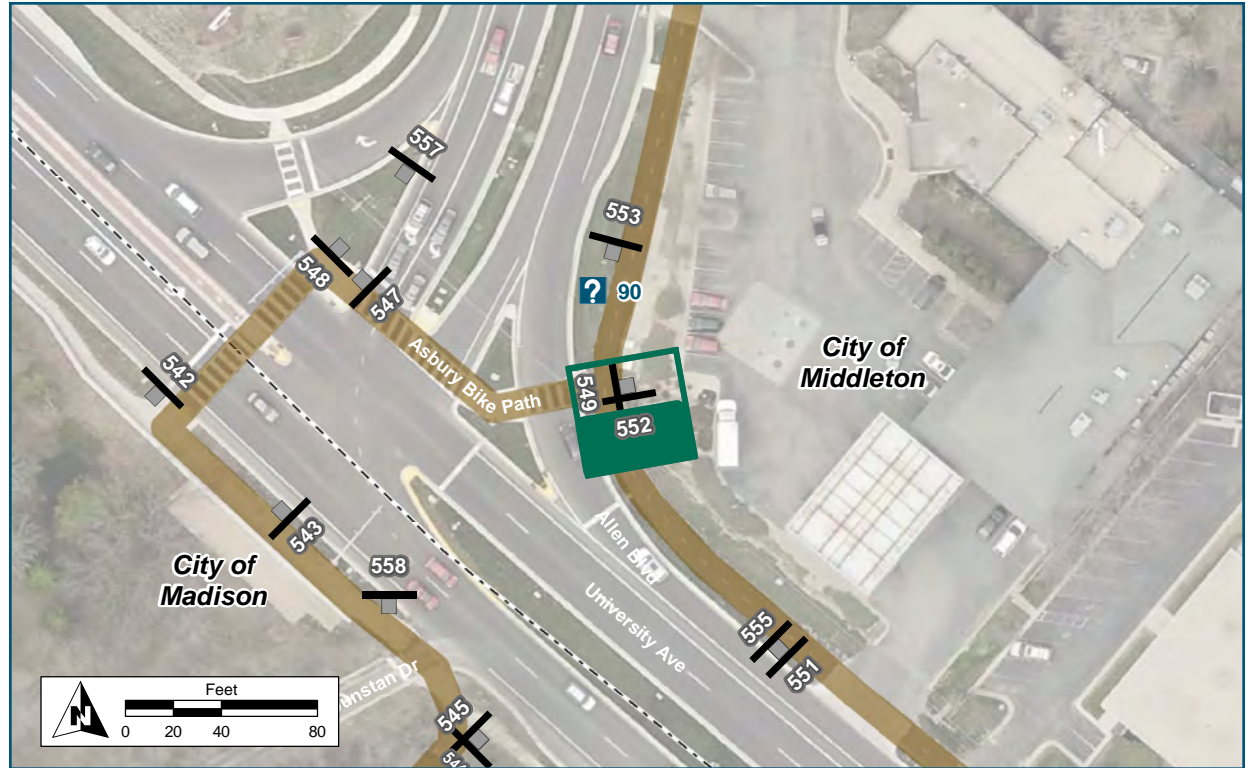
	Capital Ave	0.5 mi 3 min
	Lake Mendota Dr	0.8 mi 5 min
	Dwtn Madison	5.0 mi 30 min



Location	
On	University Avenue
At	Southeast of Allen Boulevard
Installation Details	
Assembly Type	Confirmation
Jurisdiction	Dane County Highway
Post	New
Other Assemblies	Back to back with #551
Sign Facing	Northwest
Post Distance off Pavement	3 ft from sidepath
Distance from Intersection	20-25 feet W of driveway. 25-30 feet E of "No Engine Braking" sign.
Placement Notes	



Assembly ID: 552



Location

On University Avenue Sidepath
 At Northeast of Allen Boulevard

Installation Details

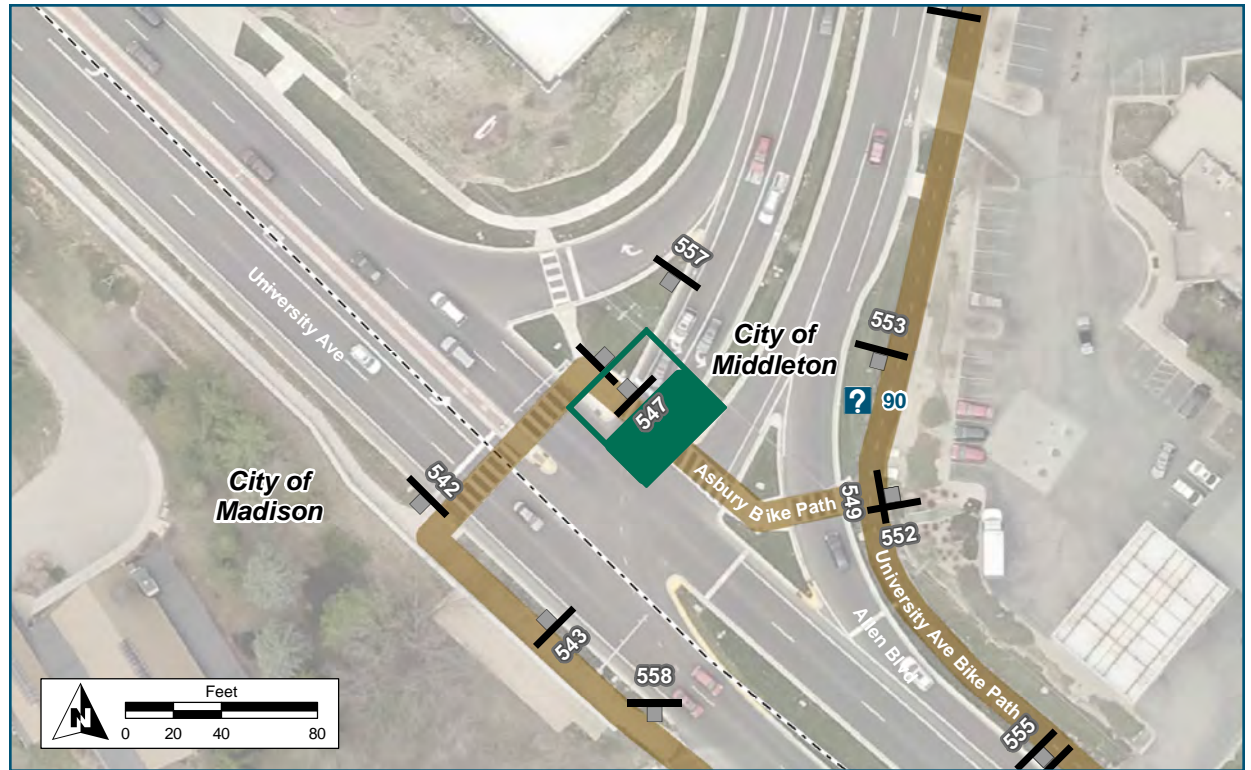
Assembly Type	Decision
Jurisdiction	Dane County Highway
Post	New
Other Assemblies	Perpendicular to #549
Sign Facing	South
Post Distance off Pavement	3 ft east of sidepath
Distance from Intersection	0 ft

Placement Notes

Install across from sidewalk ramp.



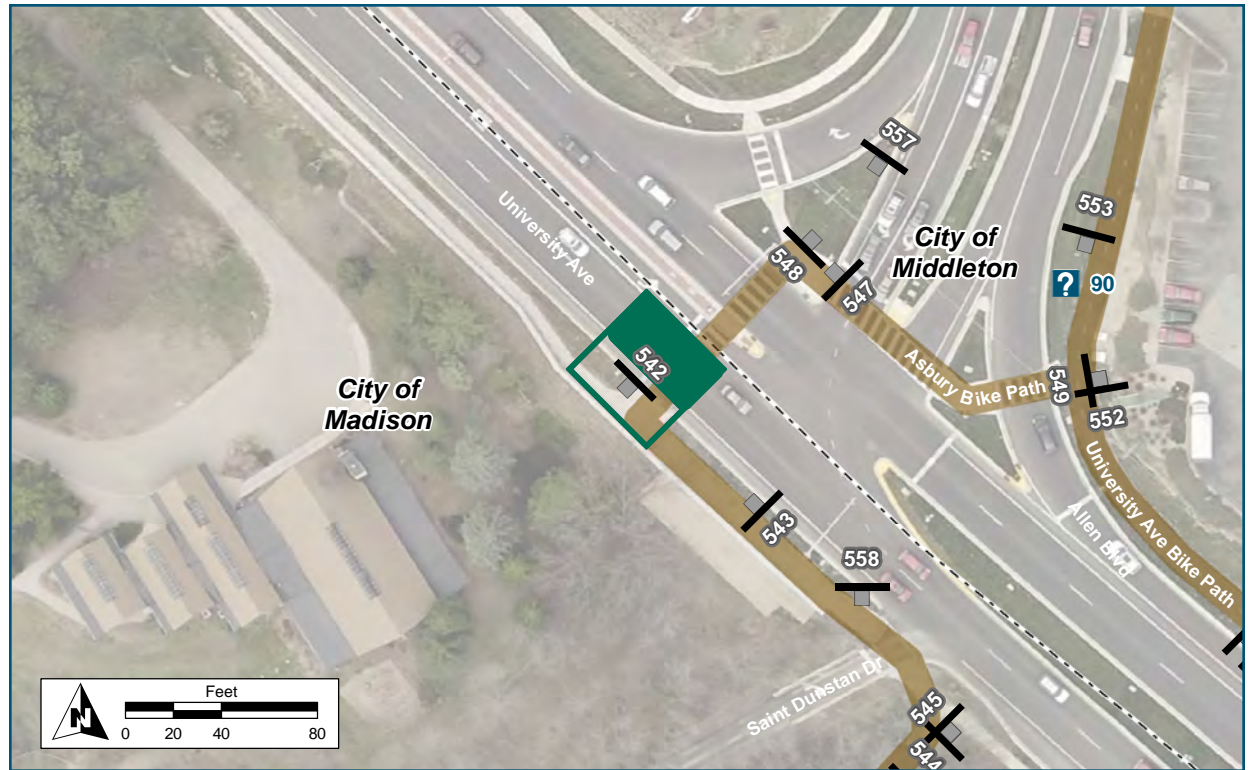
Assembly ID: 547



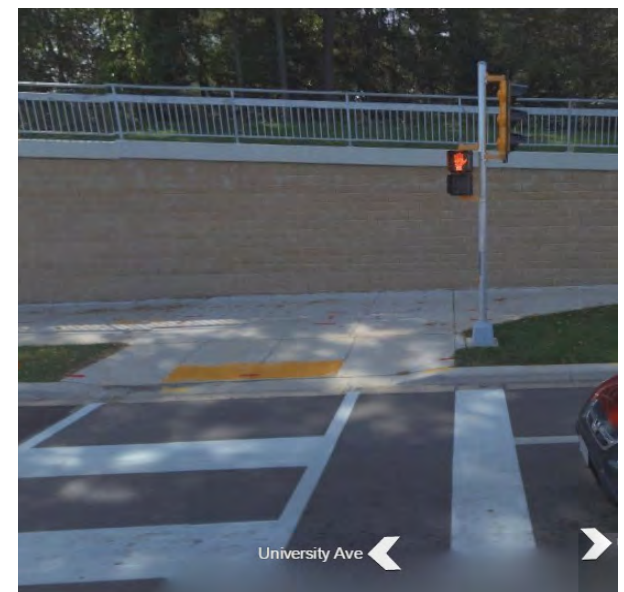
Location	
On	Allen Boulevard SE-bound
At	North of University Avenue
Installation Details	
Assembly Type	Decision
Jurisdiction	Dane County Highway
Post	Existing traffic pole
Other Assemblies	None
Sign Facing	Southeast
Post Distance off Pavement	3 ft from curb
Distance from Intersection	0
Placement Notes	
Mount above pedestrian signal heads.	



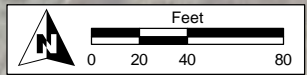
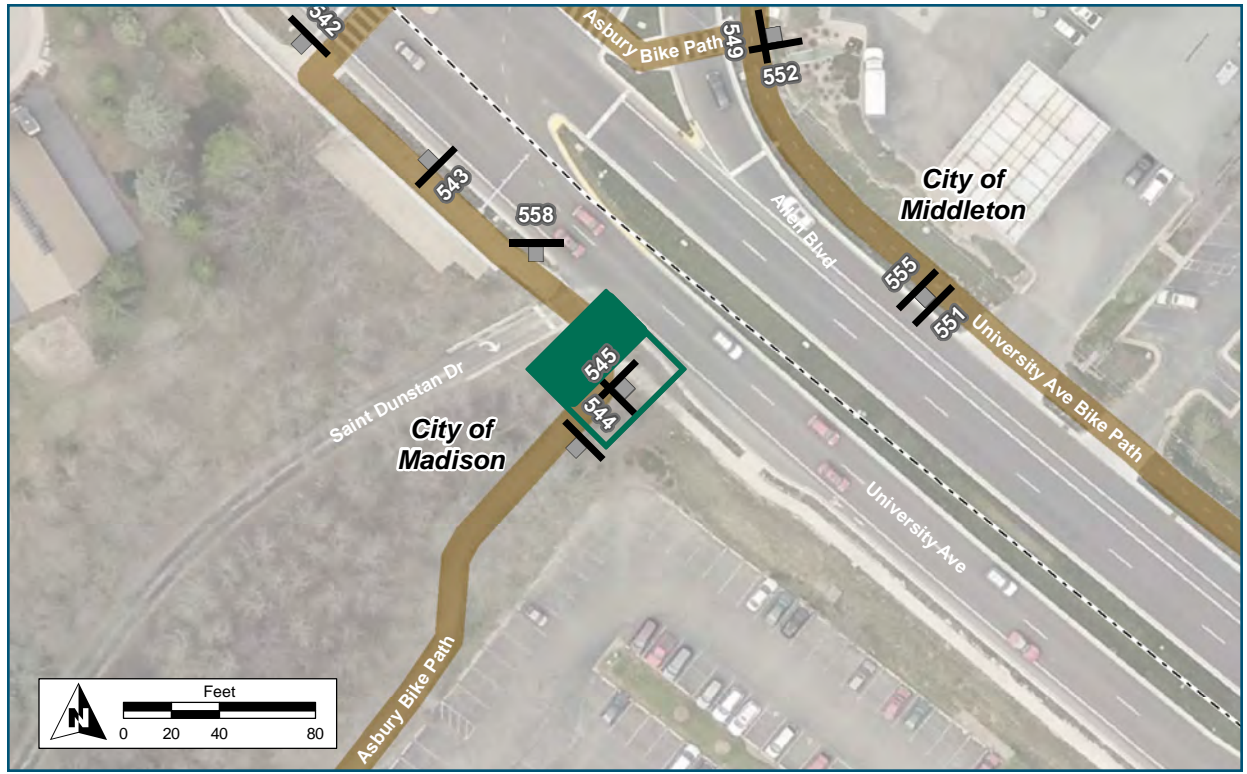
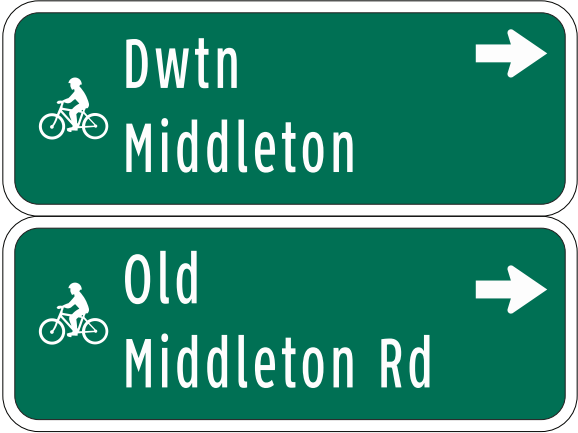
Assembly ID: 542



Location	
On	University Avenue Eastbound
At	South of Allen Boulevard
Installation Details	
Assembly Type	Dane County Highway
Jurisdiction	Existing
Post	None
Other Assemblies	None
Sign Facing	Northeast
Post Distance off Pavement	3 ft
Distance from Intersection	0 ft
Placement Notes	
Mount above pedestrian signal heads.	



Assembly ID: 545



Location

On Asbury Bike Path
 At South of University Avenue

Installation Details

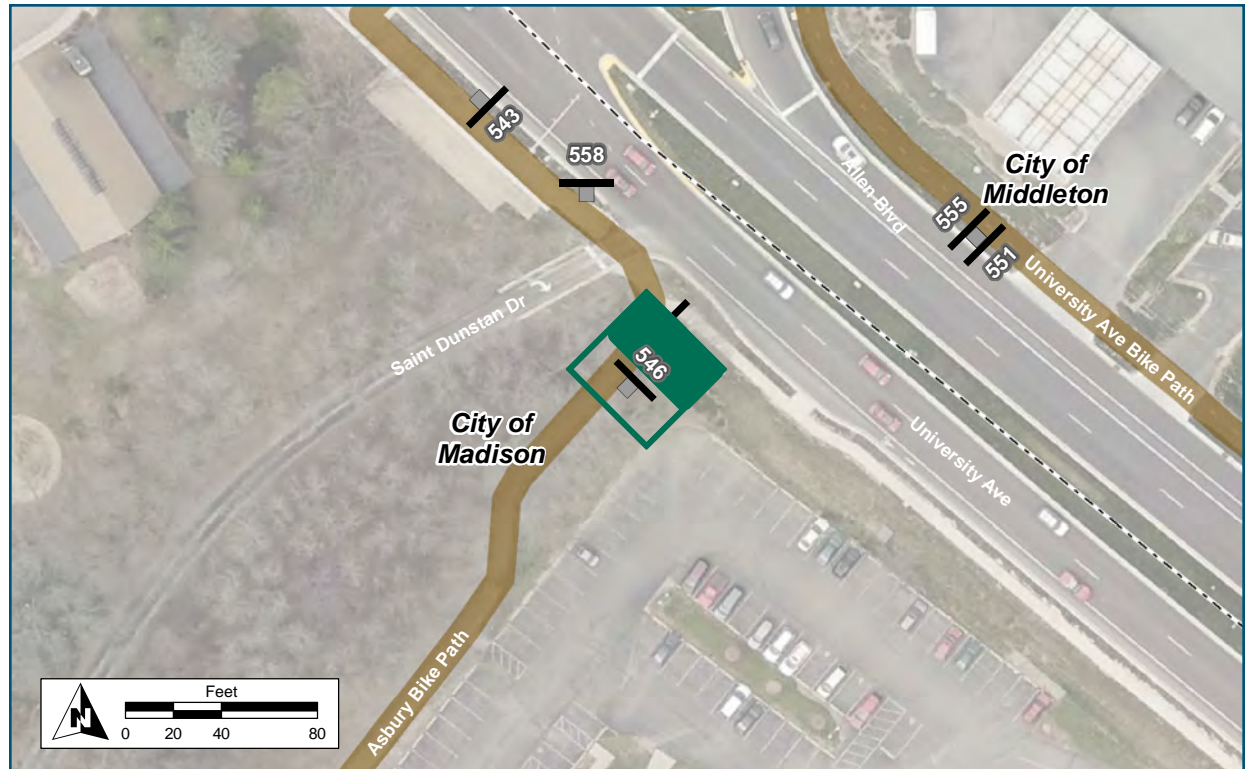
Assembly Type	Decision
Jurisdiction	City of Madison
Post	New
Other Assemblies	Perpendicular to #544
Sign Facing	Northwest
Post Distance off Pavement	4 ft from edge of path
Distance from Intersection	4 ft south of sidewalk

Placement Notes



Assembly ID: 546

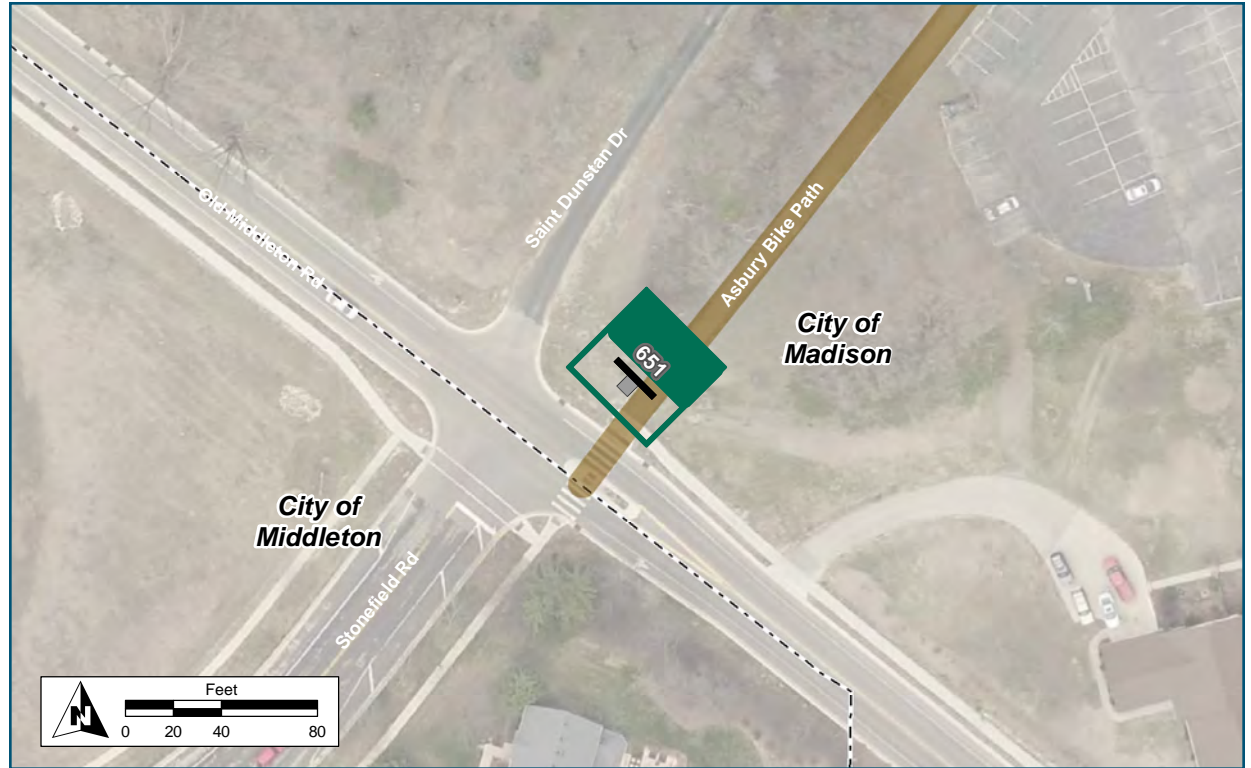
Old Middleton Rd	0.1 mi 1 min
Stonefield Rd	0.2 mi 1 min
Dwtm Middleton	1.6 mi 10 min



Location	
On	Asbury Bike Path
At	South of University Avenue
Installation Details	
Assembly Type	Confirmation
Jurisdiction	City of Madison
Post	New
Other Assemblies	None
Sign Facing	Northeast
Post Distance off Pavement	3 ft
Distance from Intersection	30-40 feet southwest of intersection of path and sidewalk.
Placement Notes	
Should be visible from sidewalk.	



Assembly ID: 651



Location

On Asbury Bike Path
At North of Old Middleton Rd

Installation Details

Assembly Type Decision
Jurisdiction City of Madison
Post New
Other Assemblies None
Sign Facing Northeast
Post Distance off Pavement 3 ft
Distance from Intersection 10 feet north of sidewalk

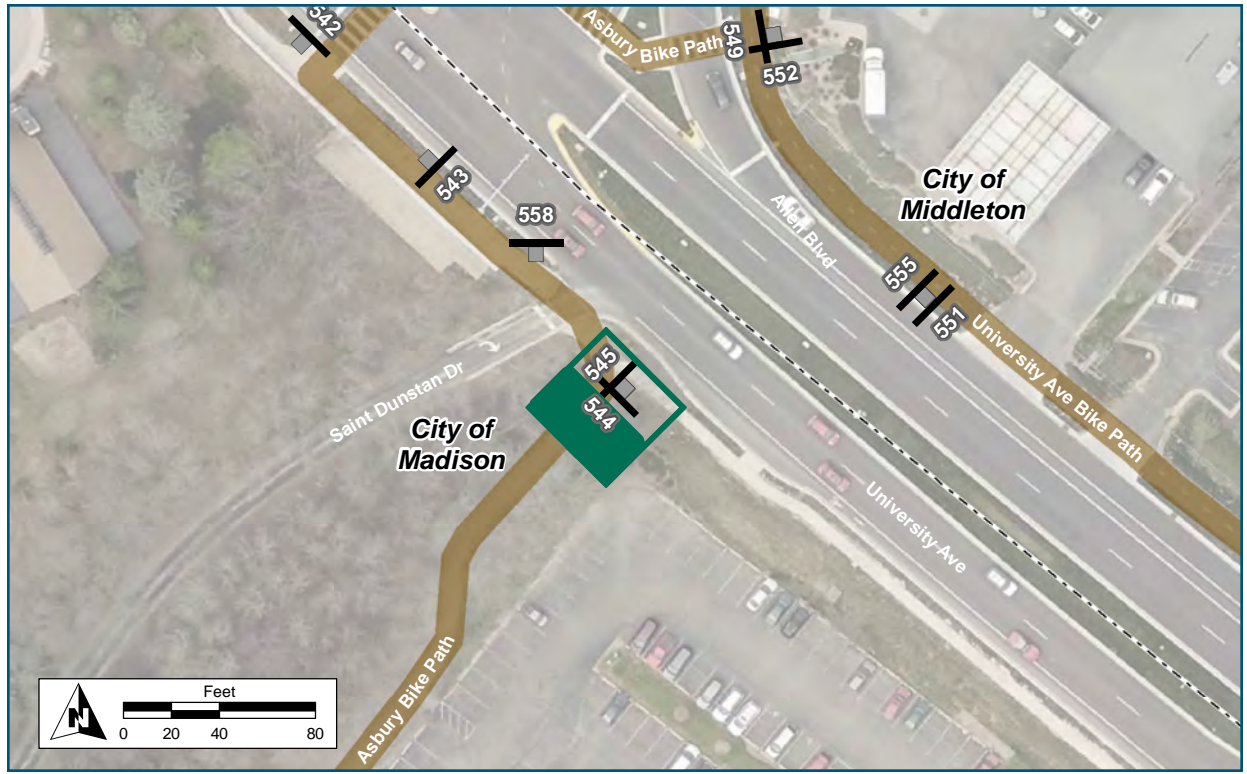
Placement Notes

Assembly ID: 544

Use Crosswalks
for University
Ave Sidepath

← Allen Blvd

← Lakeview
Community Pk



Location

On Asbury Bike Path
At South of University Avenue

Installation Details

Assembly Type Decision
Jurisdiction City of Madison
Post New
Other Assemblies Perpendicular to #545
Sign Facing Southwest
Post Distance off Pavement 4 ft from edge of path
Distance from Intersection 4 ft south of sidewalk

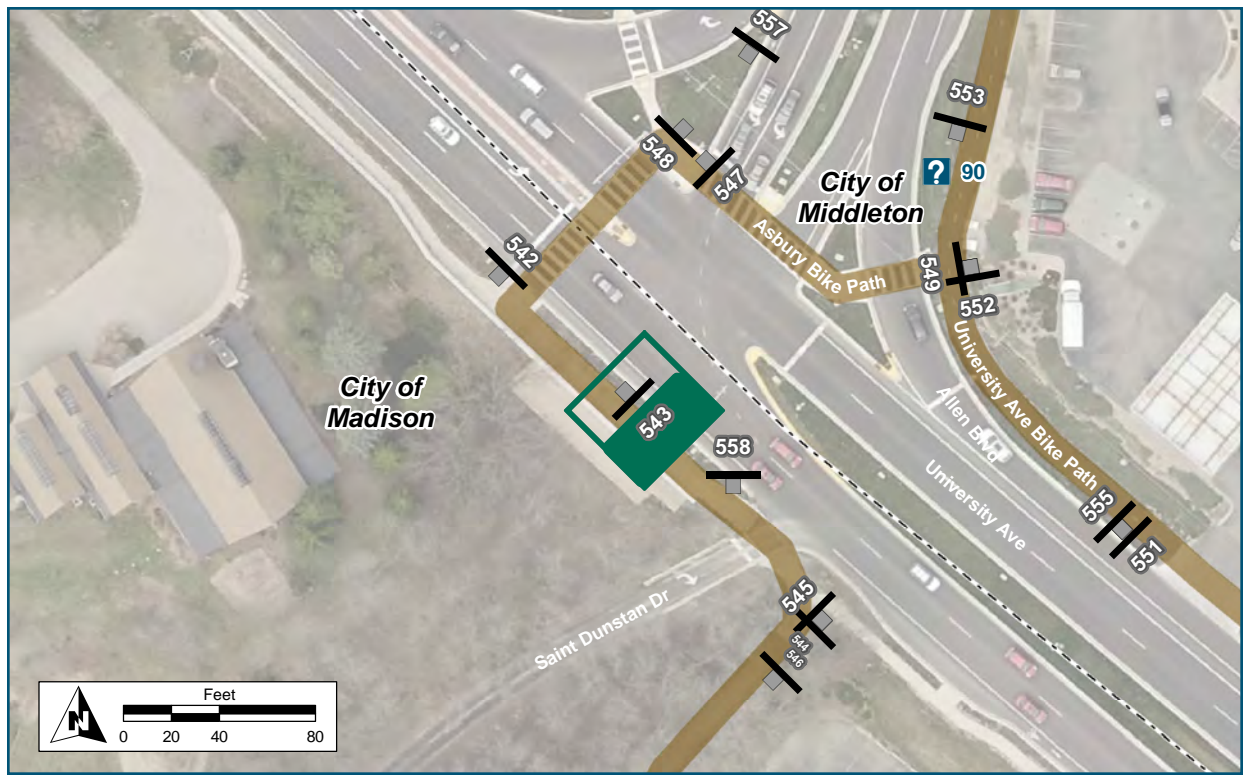
Placement Notes



Assembly ID: 543



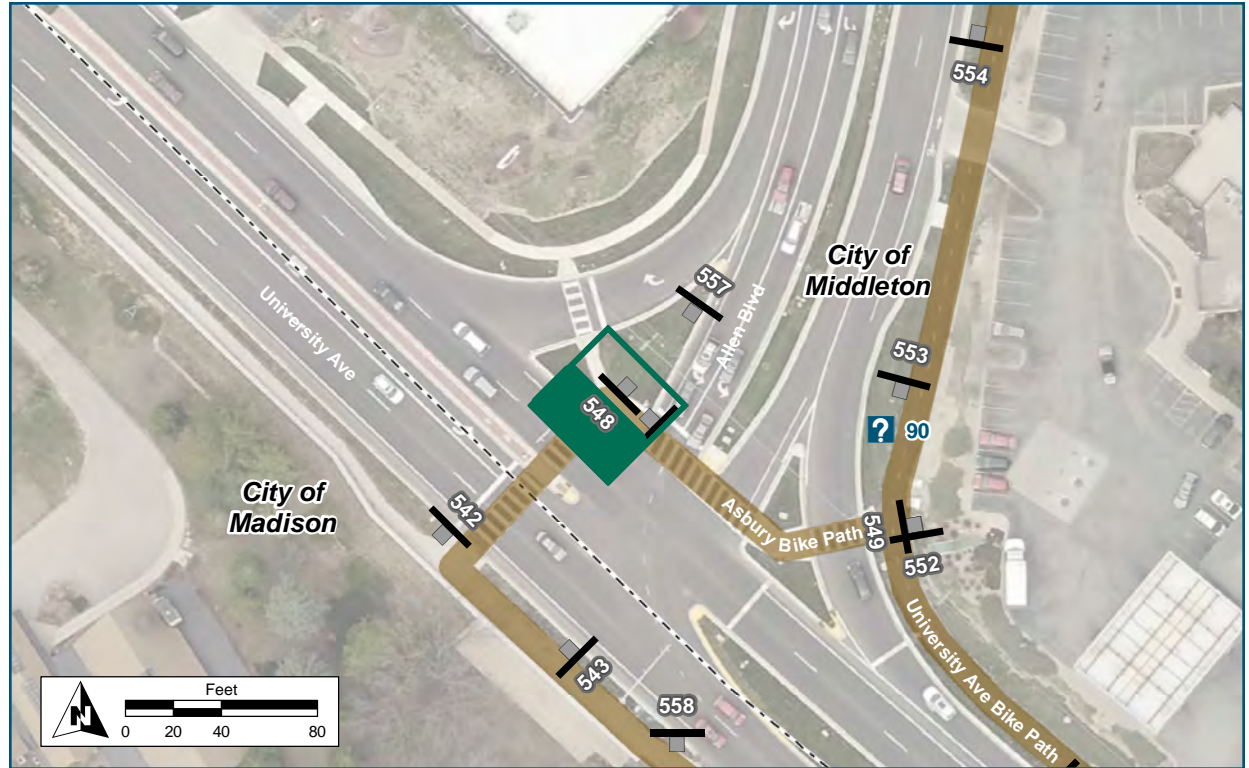
Use Crosswalks



Location	
On	University Avenue Eastbound
At	South of Allen Boulevard
Installation Details	
Assembly Type	Turn
Jurisdiction	Dane County Highway
Post	Existing
Other Assemblies	None
Sign Facing	Southeast
Post Distance off Pavement	3 ft from sidewalk
Distance from Intersection	0
Placement Notes	
Use traffic signal pole. Mount perpendicular to traffic signals.	



Assembly ID: 548



Location

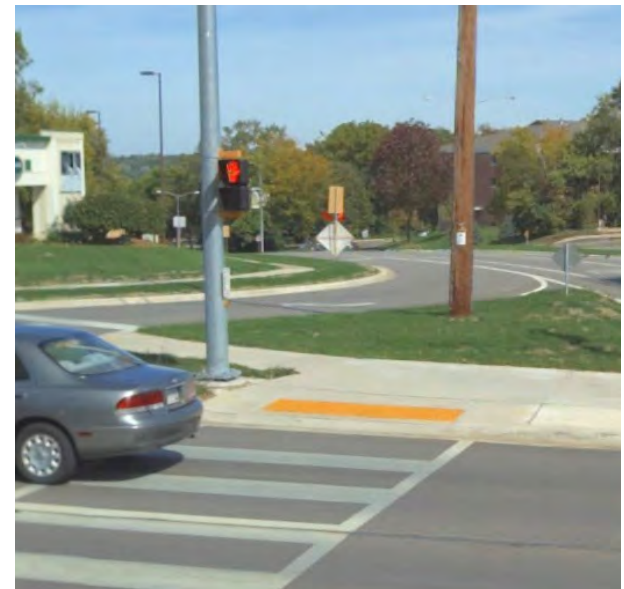
On Allen Boulevard SE-bound
At North of University Avenue

Installation Details

Assembly Type	Turn
Jurisdiction	Dane County Highway
Post	New
Other Assemblies	None
Sign Facing	Southwest
Post Distance off Pavement	4 feet off concrete pad
Distance from Intersection	0 ft

Placement Notes

Install on porkchop island.



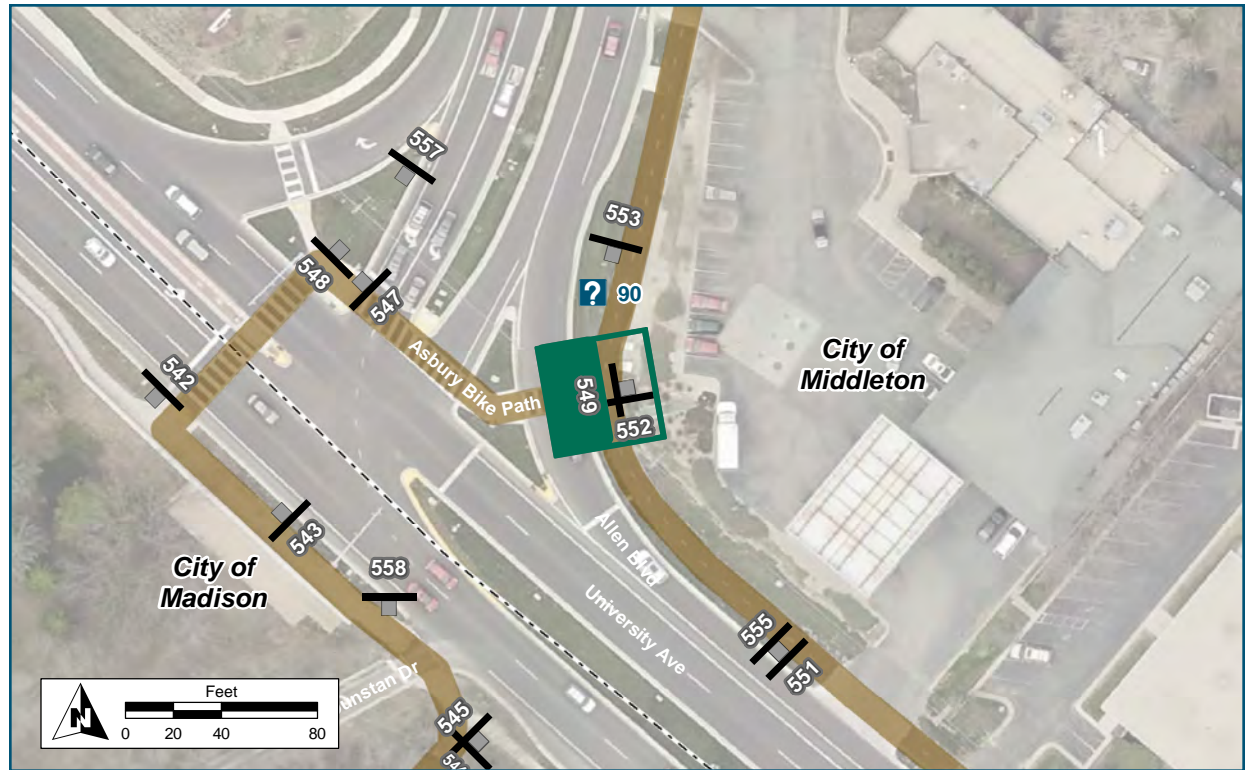
Assembly ID: 549



← Marshall Park

← Lakeview Community Pk

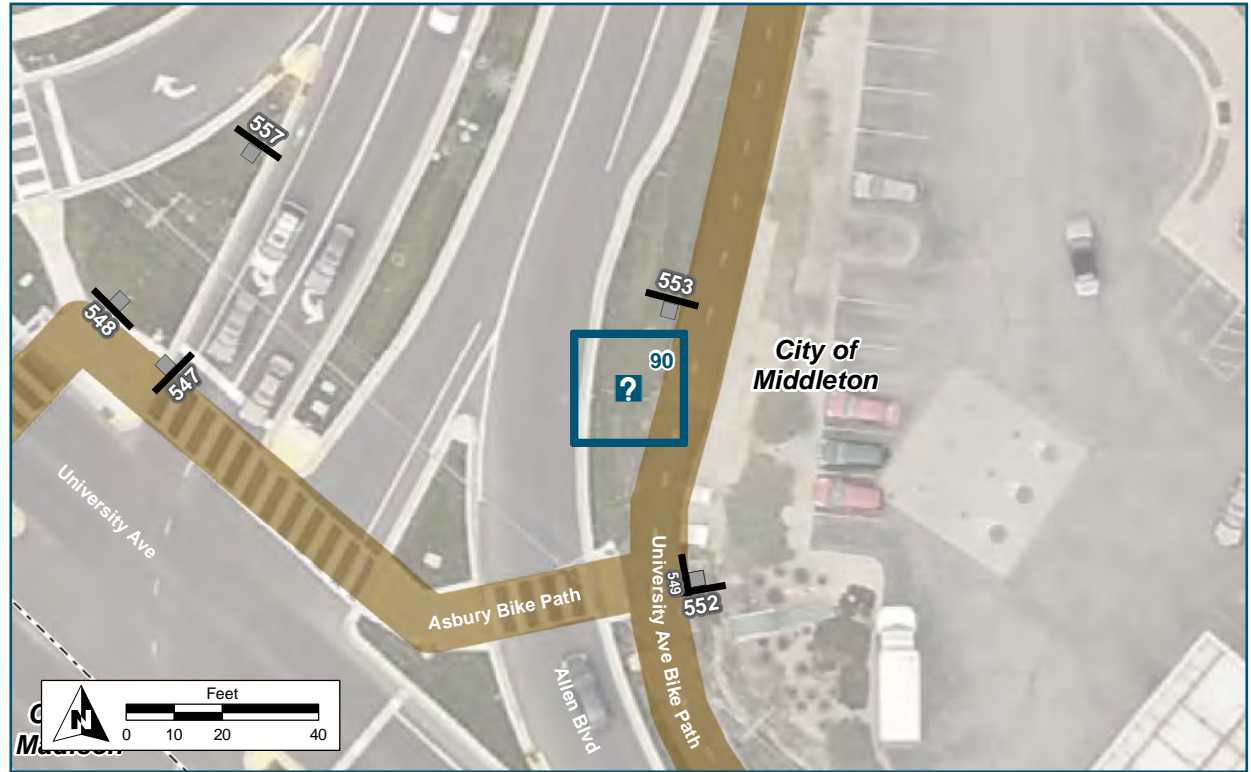
Dwtn Madison →



Location	
On	University Avenue Sidepath
At	Northeast of Allen Boulevard
Installation Details	
Assembly Type	Decision
Jurisdiction	Dane County Highway
Post	New
Other Assemblies	Perpendicular to #552
Sign Facing	West
Post Distance off Pavement	3 ft east of sidepath
Distance from Intersection	0 ft
Placement Notes	
Install facing sidewalk ramp so it is visible from porkchop refuge island.	



Kiosk Map ID: 90



Location

On Allen Blvd

At North of University Ave

Installation Details

Kiosk Type Map

Jurisdiction City of Middleton

Existing or Proposed Proposed

Sign Facing South/Southeast

Distance off Pavement 4-5 ft

Distance from Intersection 0 ft

Placement Notes

If there is not enough room to place this sign so it is north-facing, make sure the map will be oriented in "heads up" orientation in the direction the viewer is facing.

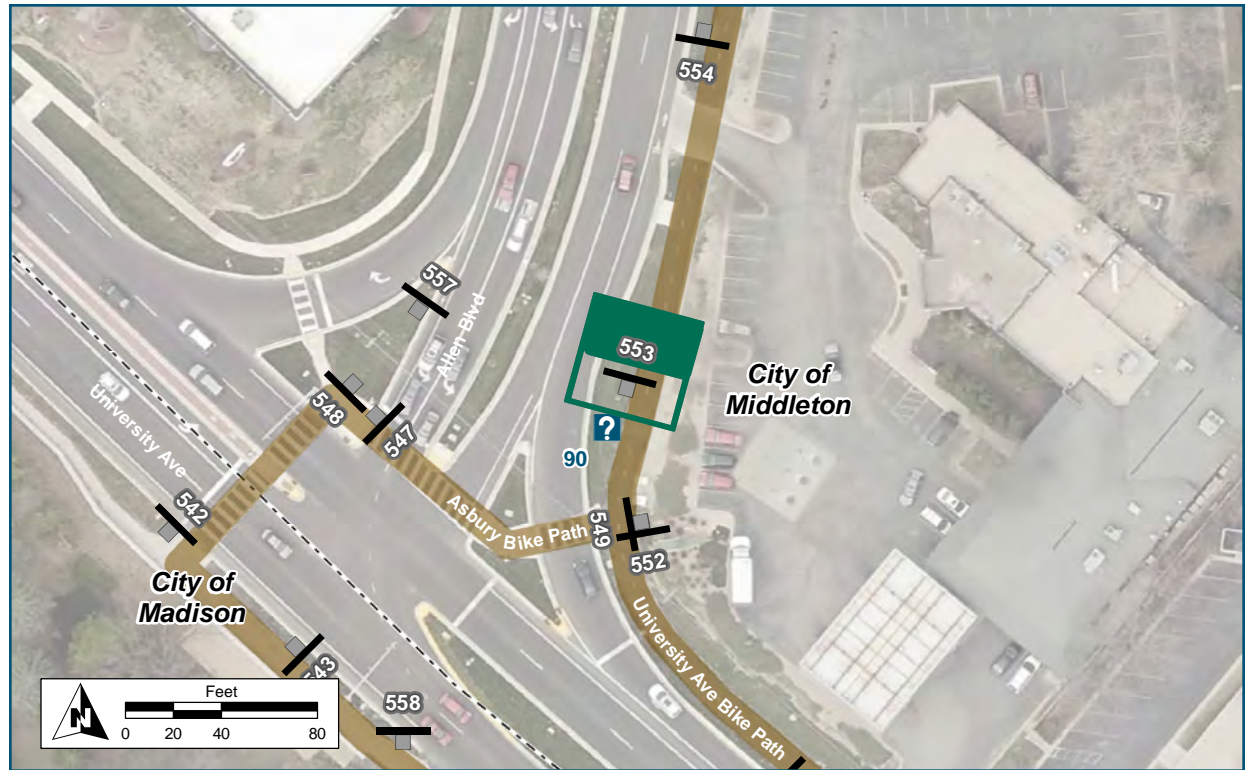


Assembly ID: 553



← Dwtm Madison




Dwtm Middleton/ →
Old Middleton Rd
Use Crosswalks

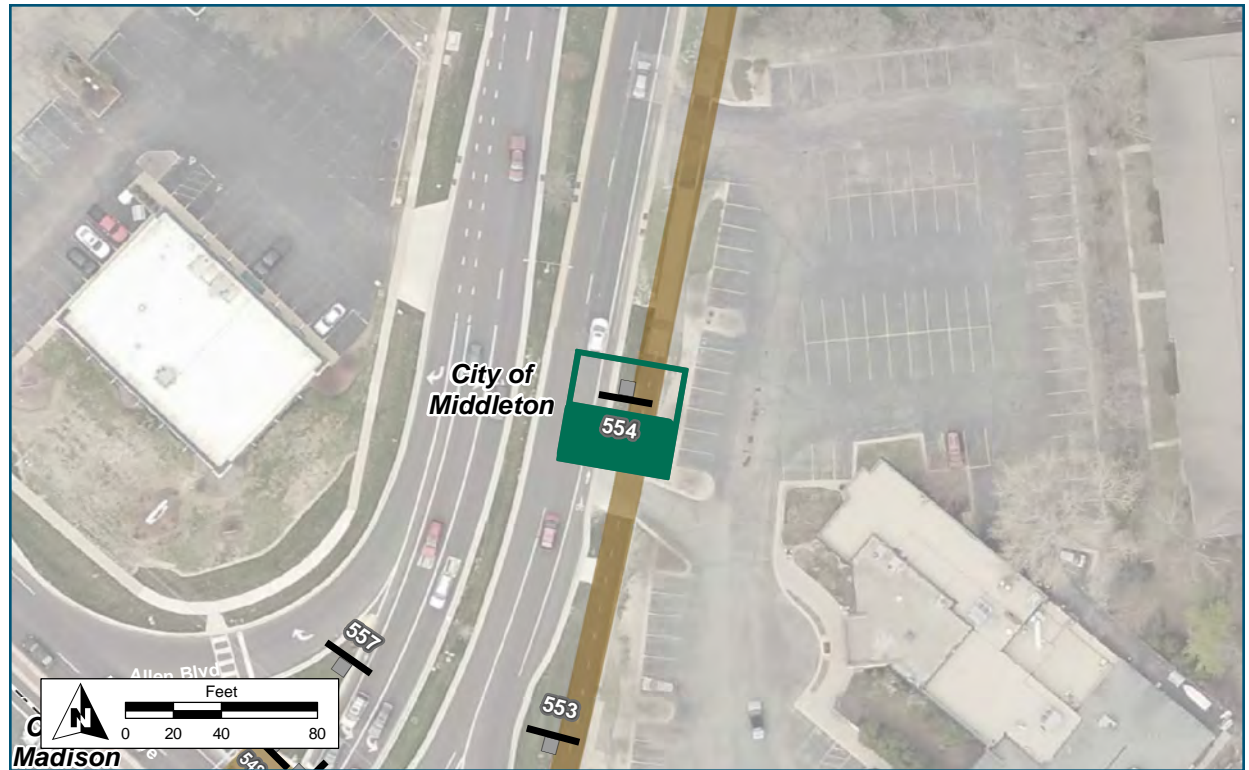


Location	
On	Allen Boulevard Sidepath
At	North of University Avenue
Installation Details	
Assembly Type	Decision
Jurisdiction	Dane County Highway
Post	New
Other Assemblies	None
Sign Facing	North
Post Distance off Pavement	3 ft from sidepath
Distance from Intersection	50 feet north of sidewalk ramp
Placement Notes	



Assembly ID: 554

 Marshall Pk	0.3 mi 2 min
 Lakeview Park	0.5 mi 3 min
 Century Ave	1.0 mi 6 min



Location	
On	Allen Boulevard Northbound
At	North of University Avenue
Installation Details	
Assembly Type	Confirmation
Jurisdiction	Dane County Highway
Post	New
Other Assemblies	None
Sign Facing	South
Post Distance off Pavement	4 ft from sidepath
Distance from Intersection	30 feet north of driveway, 200 feet north of crosswalk.
Placement Notes	



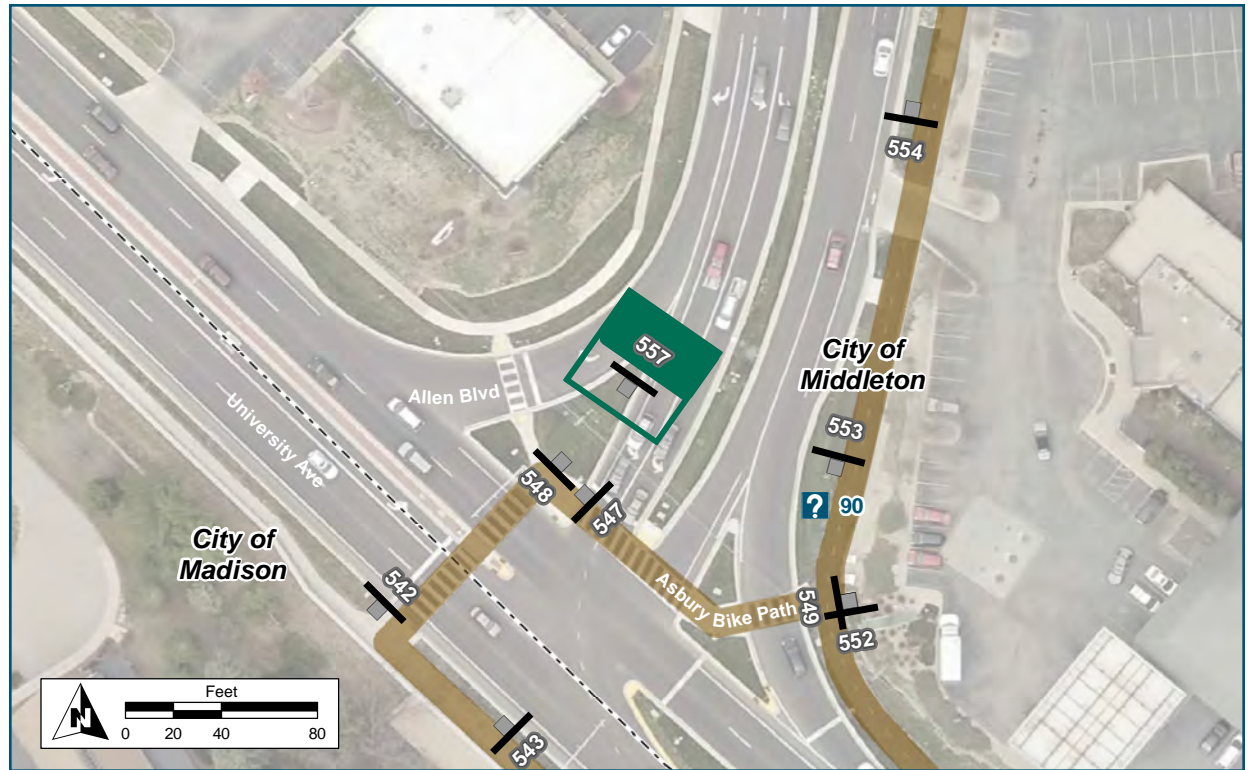
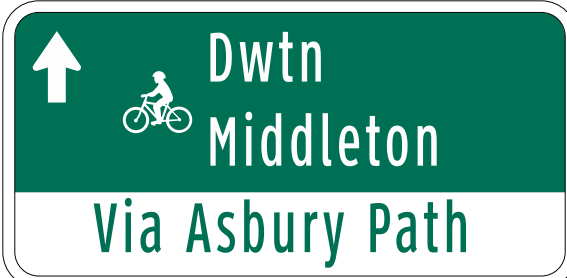
Assembly ID: 556



Location	
On	Allen Boulevard SE-bound
At	North of University Avenue
Installation Details	
Assembly Type	Decision
Jurisdiction	Dane County Highway
Post	New
Other Assemblies	None
Sign Facing	North
Post Distance off Pavement	4 ft from curb
Distance from Intersection	25 feet N of "Begin Right Turn Lane" sign and 350 feet N of intersection.
Placement Notes	



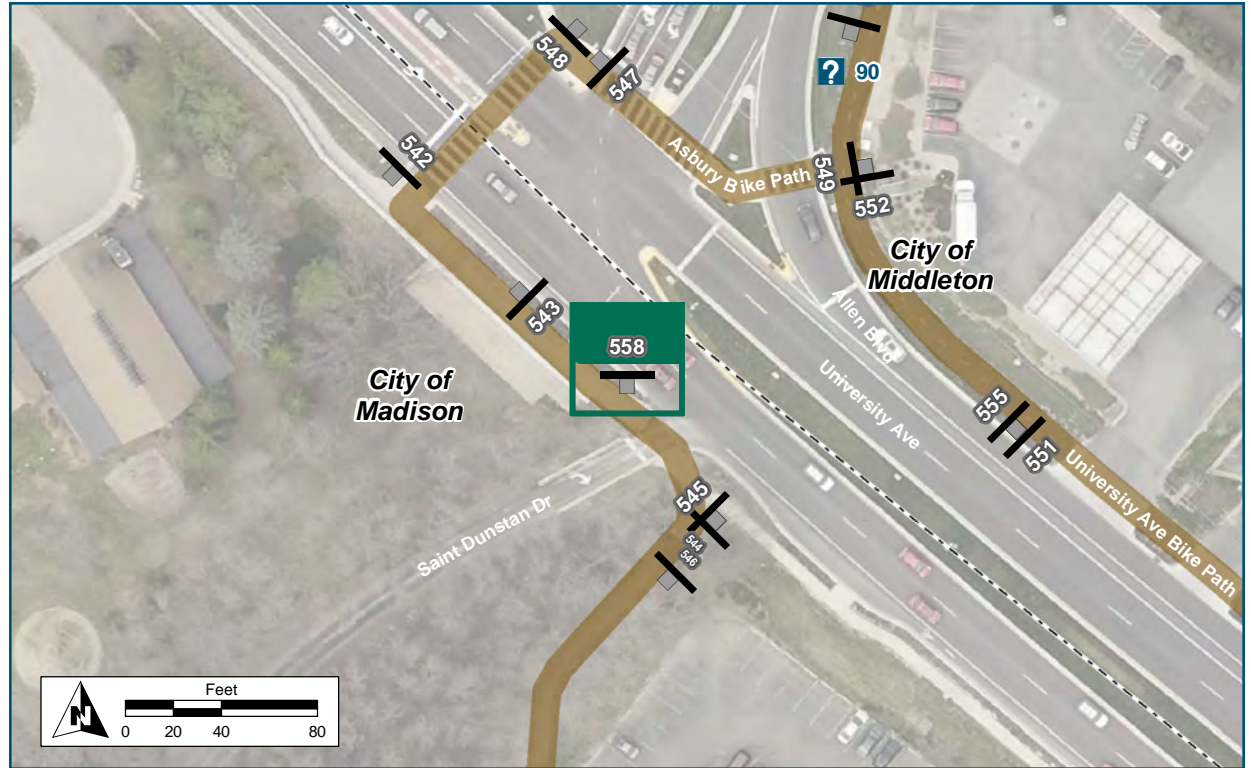
Assembly ID: 557



Location	
On	Allen Avenue SE-bound
At	North of University Avenue
Installation Details	
Assembly Type	Decision
Jurisdiction	Dane County Highway
Post	New
Other Assemblies	None
Sign Facing	North
Post Distance off Pavement	3 ft
Distance from Intersection	25 feet south of northern tip of porkchop island.
Placement Notes	



Assembly ID: 558



Location	
On	University Avenue
At	Northwest of Dunstan Drive
Installation Details	
Assembly Type	Decision
Jurisdiction	Dane County Highway
Post	Existing
Other Assemblies	Perpendicular to existing "No Left Turn" sign
Sign Facing	North
Post Distance off Pavement	2 ft from curb
Distance from Intersection	17 ft north of St Dunstan Dr
Placement Notes	
Mount on existing post facing due north, so it will be visible to bicyclists turning from the Allen Blvd bike lane.	





5: Sign Schedule

Sign Schedule

The following table below lists the planned sign assemblies in order of Assembly ID number.

Assembly ID	On	At	Assembly Type	Jurisdiction	Post	Panel 1 Type	Panel 1 Content
188	University Ave Wbound	E of Whitney Way	Confirmation	Dane Co Hwy	Exist	Existing Bike Lane sign	Bike Lane
189	University Ave Wbound	E of Whitney Way	Decision	Dane Co Hwy	Exist	FB-A	Dwtn Madison + bike symbol + straight arrow
191	University Ave Wbound	N of Whitney Way	Decision	Dane Co Hwy	Exist	FB-A	Middleton + bike symbol + left arrow
192	University Ave Ebound	Whitney Way	Turn	Dane Co Hwy	Exist	FB-D	Dwtn Madison + bike symbol + left arrow
193	Whitney Way Nbound	S of University Ave	Decision	Madison	New	FB-A	Middleton + bike symbol + left arrow
194	University Ave Ebound	W of Whitney Way	Decision	Dane Co Hwy	New	Bike Lane Ends	Bike Lane Ends
195	University Ave wbound	E of Whitney Way	Confirmation	Dane Co Hwy	New	FB-D	Shorewood Hills + bike symbol + 1.2 mi
196	University Ave Wbound	W of Whitney Way	Decision	Dane Co Hwy	New	FB-A	Middleton + bike symbol + straight arrow
516	Univ Ave Sidepath	Indian Hills Park	Decision	Madison	New	FB-A	Spring Harbor Middle School + left arrow
517	Univ Ave Sidepath	Indian Hills Park	Decision	Madison	New	FB-A	Merrill Springs Rd + left arrow
518	Univ Ave Sidepath	Indian Hills Park	Decision	Madison	New	FB-A	Shorewood Hills + left arrow
519	University Ave path	SW of Craig Ave	Decision	Dane Co Hwy	New	FB-A	Middleton + bike symbol + straight arrow
520	University Ave path	Spring Harbor Dr	Decision	Dane Co Hwy	Exist	FB-A	University Ave underpass + bike symbol + straight-right-straight arrow
521	Univ Ave sidepath	N of Spring Harb Dr	Decsion	Madison	New	FB-A	University Ave underpass + right arrow
522	Univ Ave Sidepath	NW of underpass	Decision	Dane Co Hwy	New	FB-A	Dwtn Madison +bike symbol + straight arrow
523	Univ Ave Sidepath	NW of underpass	Confirmation	Dane Co Hwy	New	FB-D	Capital Ave + bike symbol + 0.4 mi

Panel 2 Type	Panel 2 Content	Panel 3 Type	Panel 3 Content	Panel 4 Type	Panel 4 Content	Panel 5 Type	Panel 5 Content
FB-D	Spring Hrbr School + bike symbol + 0.4 mi	FB-D	Dwtm Middleton + bike symbol + 2.9 mi				
FB-A	Old Middleton Rd + bike symbol + right arrow	FB-NA	Via Whitney Way				
FB-A	Dwtm Madison + bike symbol + right arrow						
FB-NA	Use crosswalk for Path					FB-A	Cresent Rd + right arrow
FB-A	Dwtm Madison + bike symbol + right arrow	FB-NA	Use Crosswalk for Path			Exist FB-A	UW Arboretum West Entrance + right arrow
FB-A	Dwtm Madison + bike symbol+ left arrow	FB-NA	Use Crosswalk for Path	FB-A/FB-NA	Old Middleton Rd + bike symbol+ right / FB-NA Via Whitney Way	FB-A	Dawley Bike Hub + right arrow + icons
FB-A	Dwtm Madison + bike symbol + 3.7 mi					FB-D	Beltline Overpass 2.7
FB-A	Old Middleton Rd + bike symbol + left arrow	FB-NA	Via Whitney Way				
FB-A	Middleton + left arrow	FB-A	Merrill Springs Rd + diagonal right arrow				
FB-A	Shorewood Hills + right arrow	FB-A	Dwtm Madison + right arrow				
FB-A	Dwtm Madison + left arrow	FB-A	Middleton + right arrow				
FB-A	University Ave underpass +bike symbol + straight-right-straight arrow	FB-A	Spring Hrbr School + bike symbol + right arrow				
FB-A	Spring Hrbr School +bike symbol + right arrow	FB-A	Lake Mendota Dr + bike symbol + right arrow				
FB-A	Spring Hrbr School + bike symbol + left arrow	FB-A	Lake Mendota Dr + bike symbol + left arrow	FB-A	University Ave underpass + bike symbol + left u-turn arrow		
FB-D	Allen Blvd + bike symbol + 1.0 mi	FB-d	Dwtm Middleton + bike symbol + 2.6 mi				

Assembly ID	On	At	Assembly Type	Jurisdiction	Post	Panel 1 Type	Panel 1 Content
526	Whitney Way Nbound	University Ave	Decision	Madison	Exist	FB-A	Middleton + bike symbol + left arrow
527	University Ave Wbound	N of Whitney Way	Decision	Dane Co Hwy	Exist	FB-A	Middleton + bike symbol + left arrow
529	Spring Harbor Dr	NE of University Ave	Decision	Madison	Exist	FB-A	Dwtm Madison + bike symbol + left arrow
530	University Ave path	SW of Craig Ave	confirmation	Dane Co Hwy	New	FB-D	Old Middleton Rd + bike symbol + 0.5 mi
531	University Ave	NW of underpass	Decision	Dane Co Hwy	New	FB-A	Lake Mendota Dr + bike symbol + right arrow
532	University Ave	SW of Spring Harbor	Decision	Dane Co Hwy	Exist	FB-A	University Ave underpass + bike symbol + u-turn arrow
533	Underpass ramp	Spring Harbor Dr	Decision	Madison	Exist	FB-A	Spring Harbor Middle School + left arrow
534	Univ Ave Sidepath	SE of Capital Ave	Decision	Dane Co Hwy	New	FB-A	Allen Blvd +bike symbol + straight arrow
535	Univ Ave Sidepath	SE of Capital Ave	Confirmation	Dane Co Hwy	New	FB-D	Spring Hrbr School + bike symbol + 0.4 mi
536	Univ Ave Sidepath	NW of Capital Ave	Confirmation	Dane Co Hwy	Exist	Existing Bike Lane	BIKE LANE
537	Univ Ave Sidepath	NW of Capital Ave	Decision	Dane Co Hwy	Exist	FB-A	Dwtm Madison + bike symbol + straight arrow
538	Capital Ave	NE of Univ Ave	Decision	Madison	New	FB-A	Old Middleton Rd + bike symbol + straight arrow
539	Capital Ave	SW of Univ Ave	Decision	Madison	Replace	FB-A	Middleton + bike symbol + straight-left arrow
540	University Ave Eboun	NW of Capital Ave	Decision	Dane Co Hwy	New	FB-A	Dwtm Madison + bike symbol + straight arrow
541	University Ave Eboun	NW of Capital Ave	Decision	Dane Co Hwy	New	FB-A	Dwtm Madison + bike symbol + straight arrow
542	University Ave Eboun	S of Allen Blvd	Decision	Dane Co Hwy	Exist	I-UN	BIKE ROUTE
543	University Ave Eboun	S of Allen Blvd	Turn	Dane Co Hwy	Exist	I-UN	BIKE ROUTE
544	Asbury Bike Path	S of University Ave	Decision	Madison	New	FB-NA	Use Crosswalks for University Ave Sidepah
545	Asbury Bike path	S of University Ave	Decision	Madison	New	FB-A	Old Middleton Rd + bike symbol + right arrow

Panel 2 Type	Panel 2 Content	Panel 3 Type	Panel 3 Content	Panel 4 Type	Panel 4 Content	Panel 5 Type	Panel 5 Content
FB-A	Dwtn Msn + bike symbol + right arrow	FB-NA	Use Crosswalk for Path				
FB-A	Dwtn Msn + bike symbol + right arrow						
FB-A	Middleton + bike symbol + right arrow						
FB-D	Shorewood Hills + bike symbol + 1.5 mi	FB-D	Dwtn Madison + bike symbol + 4.1 mi				
FB-A	Spring Hrbr School + bike symbol + right arrow	FB-NA	Access Underpass at Crosswalk + right arrow				
FB-A	Lake Mendota Dr + left arrow	FB-A	Dwtn Madison + right-straight arrow				
FB-A	Middleton + bike symbol + straight arrow						
FB-D	Shorewood Hills + bike symbol + 2.0 mi	FB-D	Dwtn Madison + bike symbol + 4.5 mi				
FB-D	Allen Blvd + bike symbol + 0.5 mi	FB-D	Dwtn Middleton + bike symbol + 2.2 mi				
FB-A	Lake Mendota Dr + bike symbol + left arrow	FB-A	Old Middleton Rd + right arrow	FB-NA	Via Capital Ave		
FB-A	Dwtn Madison + bike symbol + left arrow	FB-A	Middleton + bike symbol + right arrow				
FB-A	Dwtn Madison + bike symbol + straight-right arrow	FB-NA	Access Sidepath by Crossing University Ave				
FB-A	Old Middleton Rd + bike symbol + right arrow	FB-NA	Via Capital Ave				
FB-A	Old Middleton Rd + bike symbol + right arrow	FB-NA	Via Capital Ave				
FB-A	Old Middleton Rd + left arrow	FB-A	Dwtn Middleton + left arrow				
AR	Right arrow	FB-NA	Use crosswalks			FB-D	Dunn's Marsh Bike Roundabout 2.0 mi
FB-A	Allen Blvd + left arrow	FB-NA	Lakeview Community Pk + left arrow			FB-A	Jenni & Kyle Preserve + shelter hiking+ left arrow
FB-A	Dwtn Middleton + bike symbol + right arrow					FB-D	Dwtn Madison 3.5 mi

Assembly ID	On	At	Assembly Type	Jurisdiction	Post	Panel 1 Type	Panel 1 Content
546	Asbury bike path	S of University Ave	Confirmation	Madison	New	FB-D	Old Middleton Rd 0.1 mi
547	Allen Blvd SEbound	N of University Ave	Turn	Dane Co Hwy	Exist	FB-A	Old Middleton Rd + bike symbol + left arrow
548	Allen Blvd SEbound	N of University Ave	Turn	Dane Co Hwy	New	FB-A	University Ave Sidepath + bike symbol + right arrow
549	University sidepath	NE of Allen Blvd	Decision	Dane Co Hwy	New	I-UN	BIKE ROUTE
550	University Ave Wbound	SE of Overlook Pass	Decision	Dane Co Hwy	New	FB-A	Dwtm Middleton + bike symbol + straight left arrow
551	University Ave Wbound	SE of Allen Blvd	Decision	Dane Co Hwy	New	FB-A	Dwtm Middleton +bike symbol+ straight-left arrow
552	University sidepath	NE of Allen Blvd	Decision	Dane Co Hwy	New	FB-A	Dwtm Middleton +bike symbol+ left arrow
553	Allen Blvd Sidepath	N of University Ave	Decision	Dane Co Hwy	New	I-UN	BIKE ROUTE
554	Allen Blvd Nbound	N of University Ave	Confirmation	Dane Co Hwy	New	FB-D	Marshall Park +bike symbol + 0.3 mi
555	University Ave	SE of Allen Blvd	Confirmation	Dane Co Hwy	New	FB-D	Capital Ave + bike symbol + 0.5 mi
556	Allen Blvd SEbound	N of University Ave	Decision	Dane Co Hwy	New	FB-A	Dwtm Middleton + bike symbol + straight arrow
557	Allen Blvd SEbound	N of University Ave	Decision	Dane Co Hwy	New	FB-A	Dwtm Middleton + bike symbol + straight arrow
558	University Ave	NW of St Dunstan Dr	Decision	Dane Co Hwy	Exist	FB-A	Asbury Path to Old Middleton Rd + bike symbol + diagonal left
560	University Ave	SW of Capital Ave	Decision	Dane Co Hwy	New	FB-A	Middleton + bike symbol + left arrow
651	Asbury Bike Path	N of Old Middleton Rd	Decision	Madison	New	FB-A	Old Sauk Rd + straight arrow

Panel 2 Type	Panel 2 Content	Panel 3 Type	Panel 3 Content	Panel 4 Type	Panel 4 Content	Panel 5 Type	Panel 5 Content
FB-D	Stonefield Rd 0.2 mi	FB-D	Dwtm Middleton 1.6 mi			FB-A	Jenni & Kyle Preserve + shelter hiking + right arrow
FB-A	Dwtm Middleton + bike symbol + left arrow						
FB-A	Lakeview Community Pk + right-straight arrow			FB-NA	Via Allen Blvd or sidepath		
FB-A	Marshall Park + left arrow	FB-A	Lakeview Community Pk + left arrow	FB-A	Dwtm Madison + right arrow		
FB-NA	Use Sidepath and Crosswalks	FB-A	Allen Blvd +bike symbol+ right arrow				
FB-NA	Use Crosswalks	FB-A	Lakeview Pk + bike symbol + right arrow				
FB-NA	Via Old Middleton Rd						
FB-A	Dwtm Madison + left arrow	FB-A	Dwtm Middleton/Old Middleton Rd + right arrow	FB-NA	Use Crosswalks		
FB-D	Lakeview Park +bike symbol + 0.5 mi	FB-D	Century Ave + bike symbol + 1.0 mi				
FB-D	Lake Mendota Dr + bike symbol + 0.8 mi	FB-D	Dwtm Madison + bike symbol + 5.0 mi				
FB-NA	Asbury Path to Old Middleton Rd	FB-A	Dwtm Madison +bike+ left arrow				
FB-NA	Via Asbury Path	FB-A	Dwtm Madison + bike symbol + left arrow	FB-NA	Use Crosswalk for Sidepath		
FB-A	Dwtm Middleton + bike symbol + diagonal left						
FB-A	Dwtm Madison + bike symbol + right arrow						
FB-NA	Via Stonefield Rd	FB-A	Hilldale Mall + left arrow	FB-A	Dwtm Middleton + right arrow		

Kiosk Schedule

The following table below lists the planned kiosk assemblies in order of Kiosk ID number.

Kiosk ID	On	At	Kiosk Type	Jurisdiction	Existing or Proposed	Other Amenities	Sign Facing	Placement Notes
90	Allen Blvd	North of University Ave	Map	City of Middleton	Proposed		South/ Southeast	If there is not enough room to place this sign so it is north-facing, make sure the map will be oriented in "heads up" orientation in the direction the viewer is facing.

THIS PAGE INTENTIONALLY LEFT BLANK

