

DANE COUNTY PARKS

INFORMATION & EVENTS NEWSLETTER

DEC. 3, 2021



ANDERSON FARM COUNTY DOG PARK

Dane County Parks is excited to announce the completion of a new dog park at Anderson Farm County Park, located in the Town of Oregon. The 35-acre dog park includes perimeter fencing with a separate small dog area, limestone hiking trails through restored prairie, two paved parking lots with electric vehicle charging stations, a stormwater basin, restrooms, and an edible orchard. A new paved trail also connects the new dog park with the existing Arthur Sholts Memorial Woods and the Village of Oregon at South Main Street. The dog park is located at 804 Union Rd, just north of Hwy A.



[Learn More](#)

RESTORATION WORKDAYS

Indian Lake County Park -- Tree and Brush Removal Volunteer Workday.

Tuesday and Friday, December 7 and 10 from 9:00 a.m. - 12:00 p.m.

Silverwood -- Tree and Brush Removal Volunteer Workday.

Friday, December 10 and 17 from 9:00 a.m. - 2:00 p.m.

Friends of Anderson Farm Workday.

Saturday, December 11 from 8:00 a.m. - 10:30 a.m.

Walking Iron County Park -- Restoration Workday.

Tuesday, December 14 from 9:00 a.m. - 12:00 p.m.

Halfway Prairie School House -- Tree and Brush Removal Volunteer Workday.

Friday, December 17 from 9:00 a.m. - 12:00 p.m.

Friends of Stewart Park Restoration Workday.

Sunday, December 19 from 1:00 a.m. - 3:00 p.m.

[Learn More](#)

*Restoration
Workday at Prairie
Moraine County
Park
Photographs taken
by Lorna Goshman*



NEW TRAVELING STORYWALK

Head to the Lewis Nine Springs E-Way for our new traveling StoryWalk book, Run Wild by David Covell. Enjoy this fun, beautifully illustrated children's book about exploring outside! Start at the parking lot and head west, taking the first left. The park is open from dawn till dusk.

Thank you to our partners, *Foundations for Dane County Parks*, *Dean Health Plan*, and *SSM Health* that work to support the traveling StoryWalk and our *Healthy Parks, Healthy You* initiatives.

The traveling StoryWalk moves to different Dane County Parks starting on the 1st of each month. Follow the [Learn More](#) button for details on future locations.

[Learn More](#)



VOLUNTEER TO GROW NATIVE PLANTS

Join us on **Sunday, December 12th from 1:00 a.m. - 3:00 p.m.** to learn how to grow native plants! Native plants have tremendous water quality benefits and increase habitat and food sources for pollinators. Because of this, the Dane County Land and Water Resources Department has started a native plant growing program to provide a source of free native plants for schools and community groups. This training will provide an overview of native plants and teach you everything you need to know to grow the plants - no prior experience is needed.

Everything but the potting soil is provided. Find our more and sign up through the Learn More button!



[Learn More](#)

BIRDS SCAVENGER HUNT

We have a scavenger hunt set up along the Capital Springs Recreation Area trails! Enjoy the trail and the late fall weather with a fun hike to find all of the signs.

Hidden along the trail are 10 birds you can find in Wisconsin in the winter. Find all 10 birds and email something you learned to HeritageCenter@countyofdane.com to receive a prize (while supplies last).

[Learn More](#)

*Trails are open daily.
Have fun!*



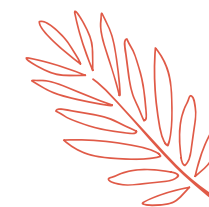
Nature Notes

from the Lussier Family Heritage Center
a Dane County Parks Facility

SCHOOL'S OUT! OUTDOOR ADVENTURE DAYS

Join Lussier Family Heritage Center Education Staff for Madison Metropolitan School District's out of school day at the Lussier Family Heritage Center on **Monday, December 6th from 1:00 p.m. - 3:00 p.m.** This is the perfect way to spend a no-school day exploring in your local county park! This event is \$5/ participant and a chaperone is required and free to attend. Come participate in hiking, nature exploration, and a craft at the Lussier Family Heritage Center.

[Learn More](#)



Nature Notes

from the Lussier Family Heritage Center
a Dane County Parks Facility

TRAINING SERIES

Our partners at Project Wingspan, with the Pollinator Partnership, are offering a virtual 5-part series on topics related to land management. The overarching goal of this workshop series is to increase the success of native habitat restoration and management efforts by offering land managers and stewards advanced educational support, recent findings from scientific field research, guidance on current best management practices, and practical solutions to 'real-world' habitat management obstacles.

Wednesday, December 8th from 12:30 p.m. - 2:30 p.m.

The suggested audience includes former, current, and potential future conservation practitioners and partners.

[Learn More](#)



2022 PARK PERMITS

Get ready for another year of adventures in Dane County Parks!

2022 Camping/Shelter Reservations and Annual Park Permits are now available to reserve and purchase.

Purchase your activity permits now and it is valid from your day of purchase till the end of 2022. Park permits also make great gifts that support our parks and natural areas!

Purchase online at www.reservedane.com

[Learn More](#)



Disc Golf · Dog Park · Lake Access
Ski Trail · Mountain Bike · State Trail Pass
Horse Trail · Camping · Tenney Lock

PLANT OF THE WEEK!

This Dane County parks Plant of the Week is, **Common Milkweed**! This plant's latin name is *Asclepias syriaca*. This milkweed can grow up to five feet tall and has flowers that grow in an umbel or spherical shape. The Common Milkweed plant is particularly important for our Monarch Butterfly populations. This plant also has a kind of cone fruit or pod that holds it's seeds. When this pod is mature it splits open and the seeds can come out. The seeds have a fluffy white "parachute" that help them get dispersed in the wind.

Want to support areas where these plants thrive? Click the "Learn More" button to find a range of volunteer opportunities that support our native prairies and other ecosystems!

[Learn More](#)



YOUTH PROGRAMS NEWSLETTER

Sign up to learn about the youth programming events happening at the Lussier family Heritage Center! Come explore the Dane County Parks with the Lussier Family Heritage Center Youth education staff. Opportunities for youth outdoor education and adventure are offered year round. Activities include, snowshoeing, biking, bird Identification and walks, STEM activities, restoration and stewardship and so much more! Join our staff in person through public programs, connect with us through a school or church group, or use our Adventure Booklet to interact with your surroundings on your own (found at the Lussier Family Heritage Center).

For more information you can contact heritagecenter@countyofdane.com.

[Learn More](#)

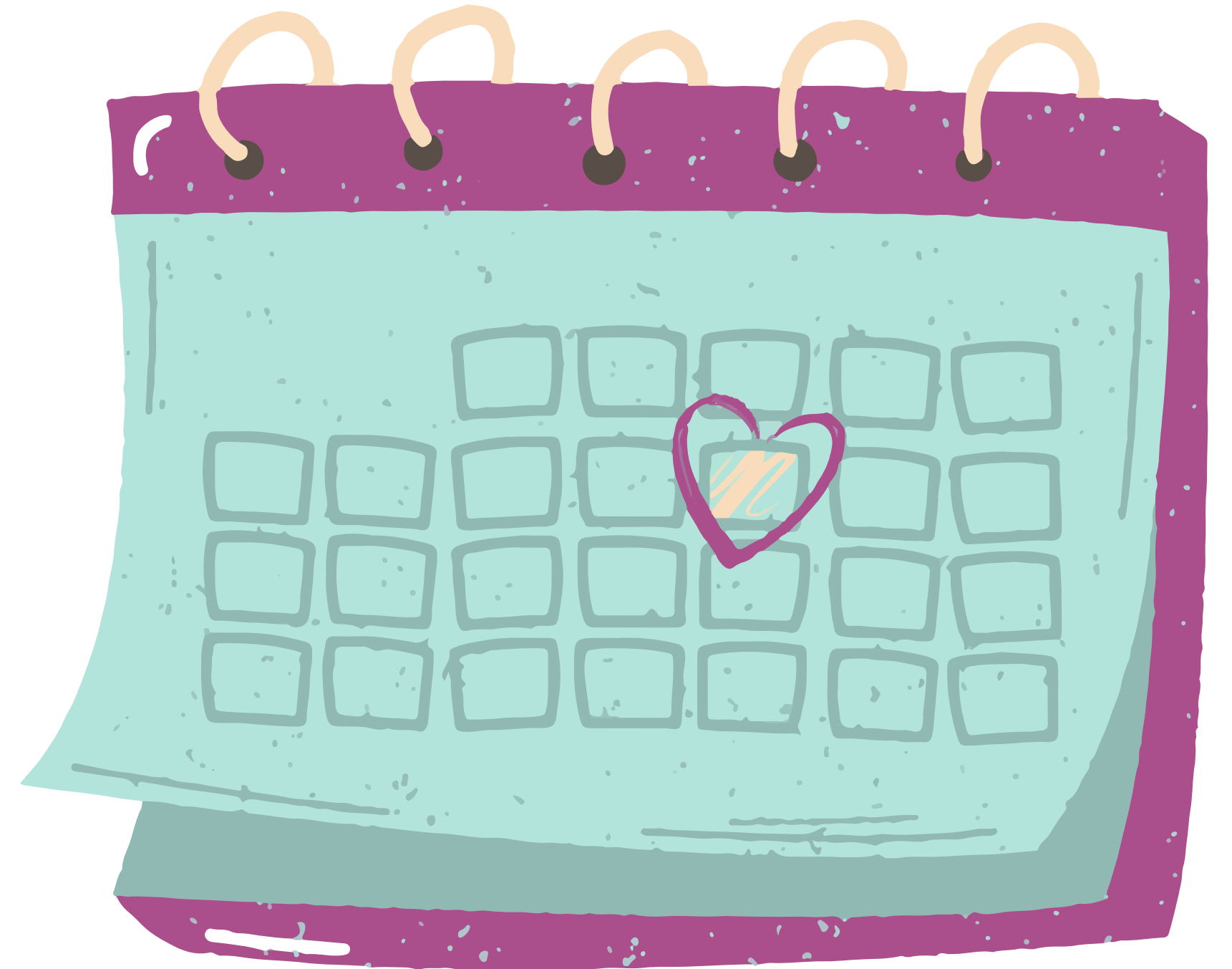


FULL CALENDAR OF EVENTS

For more event listings, check out the event calendar on our website. Events include:

- Volunteer Workdays
- Youth Programs
- Webinars
- and more!

[Learn More](#)



NEWSLETTER SIGN UP

If someone forwarded you this newsletter you can **sign up** to receive future editions on our website:

[Sign Up](#)

