

# Mendota County Park

## Master Plan Kick Off Meeting



Chris James  
Senior Landscape Architect  
November 3<sup>rd</sup>, 2015

# Meeting Overview

- Introductions
- Purpose of Meeting and Master Plan
- History Park Property
- Existing Park Use and Conditions
- Preliminary Inventory and Analysis
- Forestry Update
- Preliminary Planning Considerations
- Draft Park Recommendations & Opportunities
- Master Plan Timeline
- Next Steps
- Public Input Session

# Mendota County Park Public Information Meeting Notice

- Sent Meeting Notice to All Landowners Adjacent to Project Area Boundary, October 19<sup>th</sup>
- Posted Press Release in Park, October 19<sup>th</sup>
- Sent to Arbor Lakes/Overlook Apartments October 19<sup>th</sup>
- Sent to Artisan Senior Living Homes October 19<sup>th</sup>
- Press Release October 21<sup>st</sup>
- Posted on Dane County Web/Facebook Page October 21<sup>st</sup>
- Posted Legal Notice to Madison Newspapers, October 26<sup>th</sup>
- Sent Press Release to Stakeholders October 27<sup>th</sup>

# Purpose of the Meeting

- Begin the Public Master Plan Process for Mendota County Park
- Provide Information about the Park Master Planning Process
- Open Communication between Stakeholders and County Planning Staff
- Listen to Neighbor, Park User & Other Stakeholder Ideas, Hopes & Concerns Related to Future Park Development & Management

# Why do a Park Master Plan?

- To follow a process to determine the suitability of the land for future restoration of the park and recreation facilities (soils, vegetation, prevailing winds, shoreline currents, connectivity, views, etc.)
- To determine what types of recreation & park program areas could occur within the park.
- To provide a forum that allows public/stakeholders to give input throughout the planning process.
- To aid in the preparation of preliminary cost estimates & budgeting for capital improvements.
- To enable eligibility to participate in certain grant programs.

## *But most importantly.....*

- To provide **a common vision** for phased park facility development & park land management **that balances public use with resource protection.**

# Mendota County Park History

- Park was established in 1951.
- Was one of the original "Caretaker Parks".
- 1960's camping was extremely (too..) popular
- 1970's dredged channel and installed sheet piling, reduced campground to 30 sites, caretaker positions eliminated by County.
- 1980's boat camping and beach established
- 1990's beach relocated, channel dredged again.
- 2003 playground updated with neighborhood help
- 2014 tennis courts removed
- 2014 sea wall and boat camping restoration

# MENDOTA COUNTY PARK

## Existing Conditions



## Existing Recreation Use

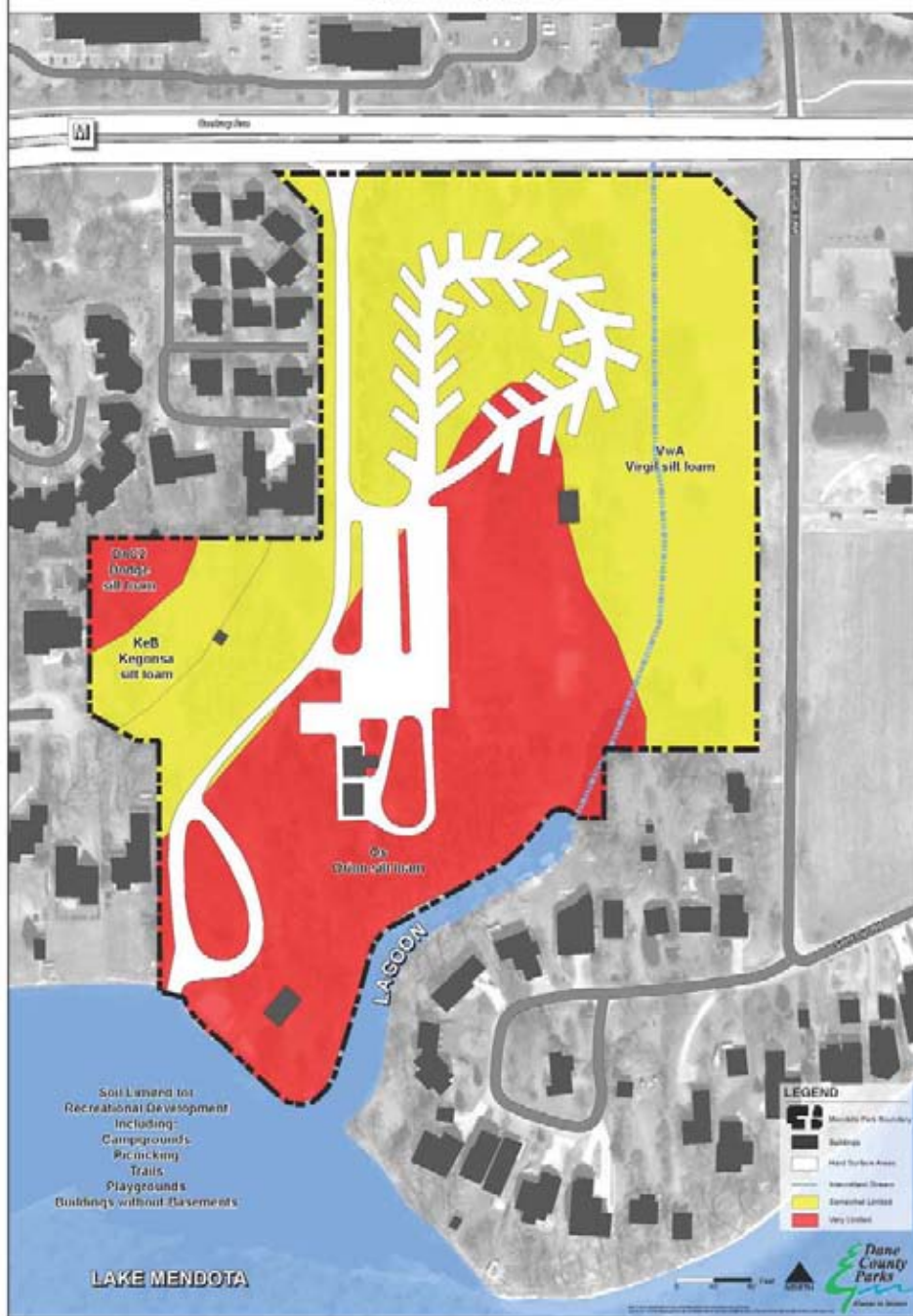
- Camping and Boat Camping
- Shore Fishing
- Picnicking
- Small Watercraft Access
- Ice Fishing Access
- Playground
- Walking
- Lake Viewing
- Minimal Basketball & Volleyball
- Beach??

# Mendota County Park Preliminary Inventory & Analysis





## MENDOTA COUNTY PARK Soil Limitations



## Soils Analysis

The majority of the park has relatively low depths to the water table and poorly drained soils.

### Opportunities:

- May be opportunities to expand the existing lagoon further into the park.
- Natural surface skating area?
- Creating wetland buffer zones for stormwater runoff.

### Constraints:

- Buildings and other park infrastructure projects must be designed to withstand hydric conditions.
- Natural surface paths/lawn maintenance issues.

## MENDOTA COUNTY PARK Existing Topography & Slope

# Slope Analysis

The majority of the park is very flat with slopes of 5% or less.

### Opportunities:

- Wide open views, self surveillance
- Ease of creating accessible facilities

### Constraints:

- Challenge to properly drain stormwater runoff



# Surrounding Land Use

Mendota County Park is surrounded by mixed residential areas.

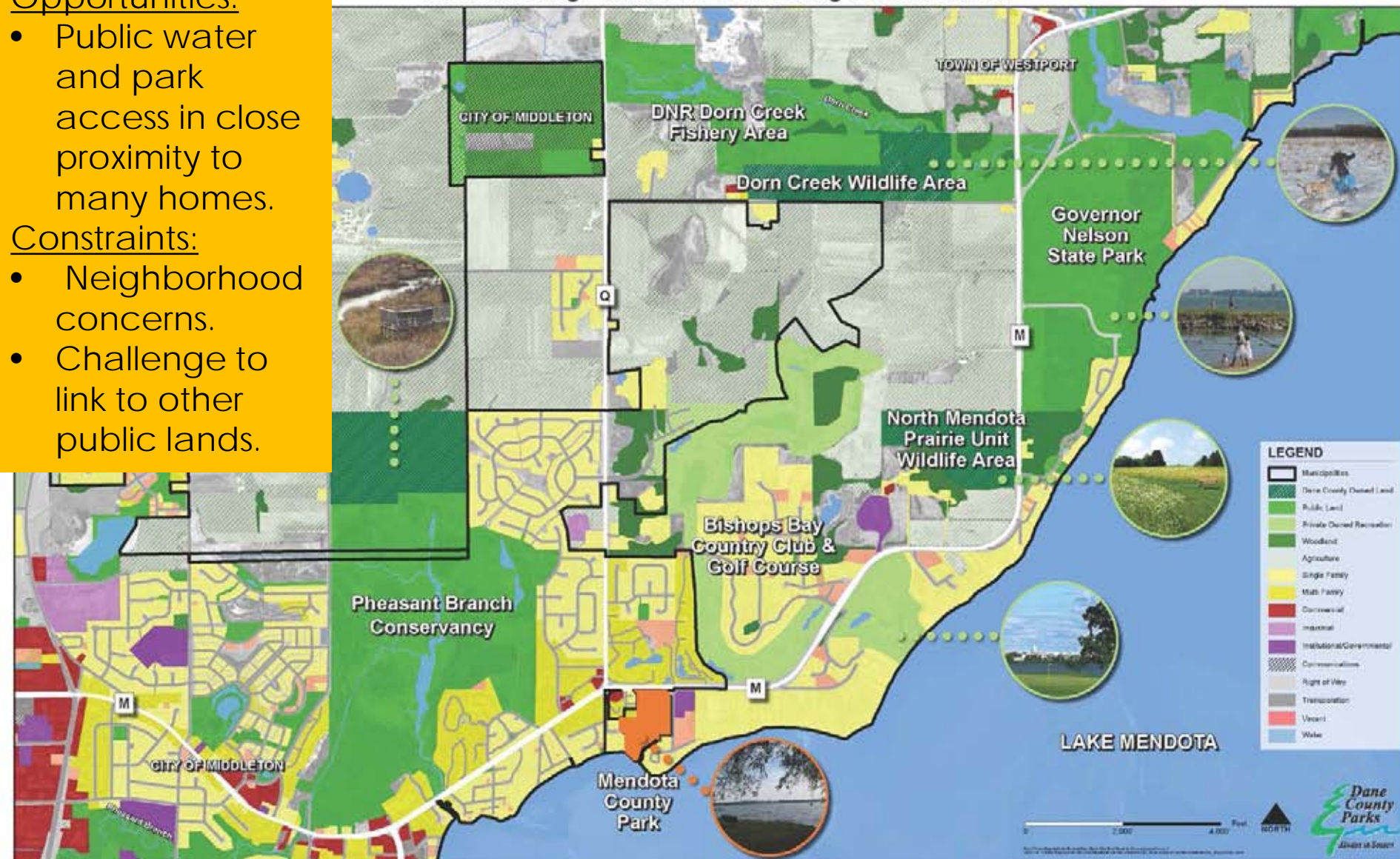
## Opportunities:

- Public water and park access in close proximity to many homes.

## Constraints:

- Neighborhood concerns.
- Challenge to link to other public lands.

## MENDOTA COUNTY PARK Surrounding Land Use & Existing Public Lands



# Bike/Ped Connections

Mendota County Park is located along several proposed north shore paths.

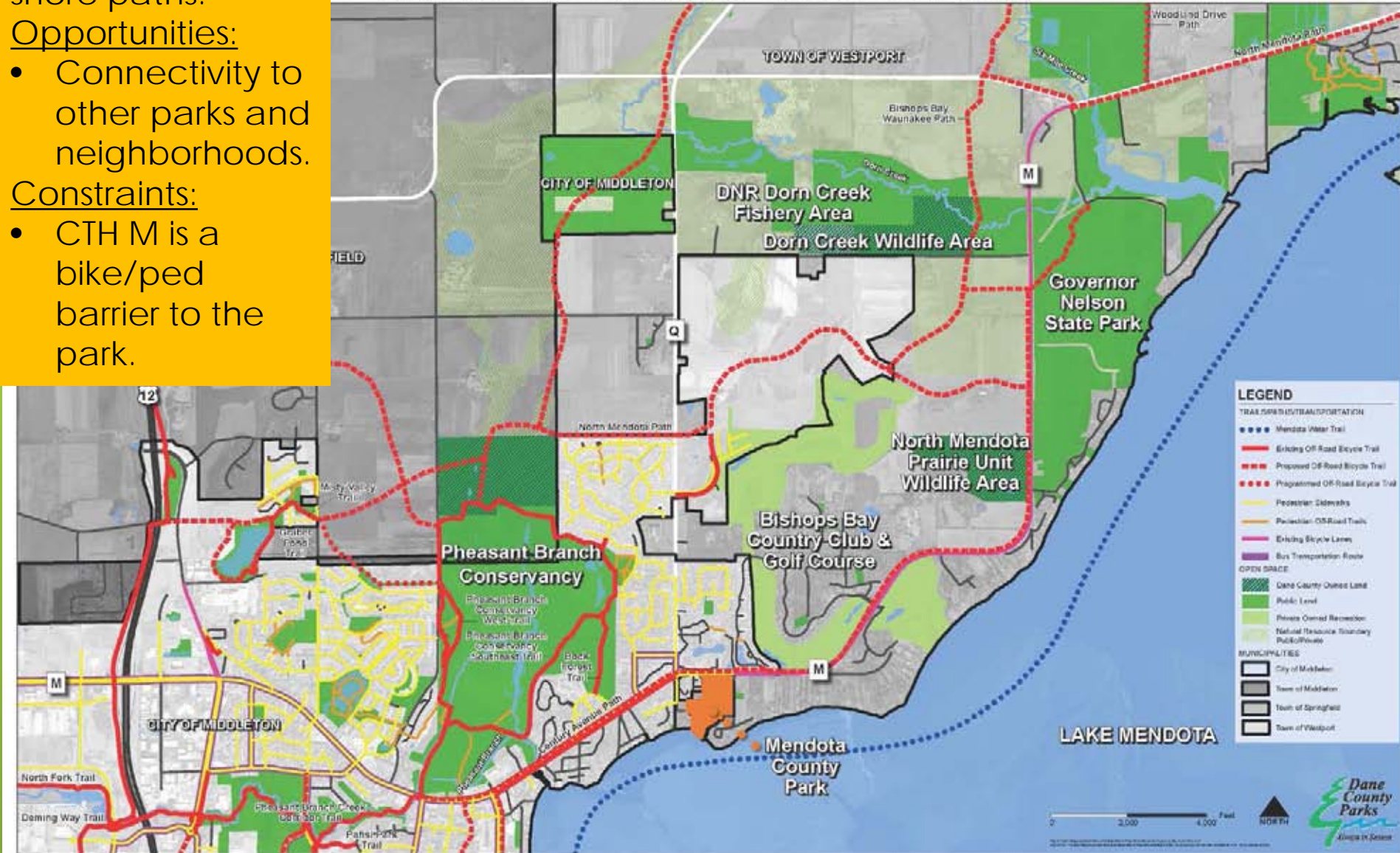
## Opportunities:

- Connectivity to other parks and neighborhoods.

## Constraints:

- CTH M is a bike/ped barrier to the park.

## MENDOTA COUNTY PARK Existing & Proposed Bicycle/Pedestrian Connectivity

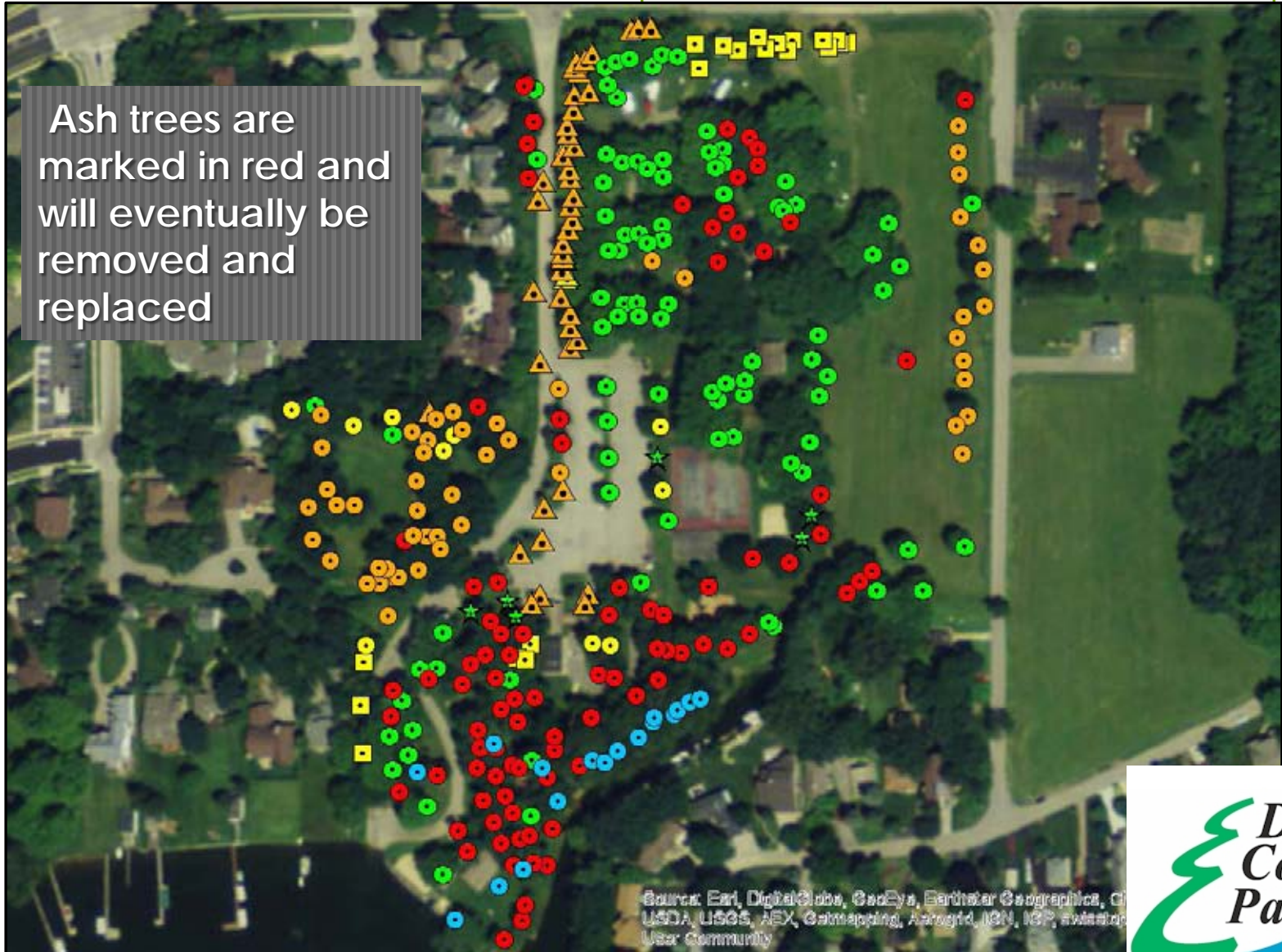


# Ash Management Mendota County Park

Adam Alves, Arborist,  
Dane County Parks



Ash trees are marked in red and will eventually be removed and replaced



# Mendota Ash

- In 2009 there were 343 total trees and 93 Ash
- Ash comprised 27% of the total number of Trees
- In 2010 25 trees were planted to offset for the eventual loss of Ash due to EAB



# Two problem pathogens now affecting Ash in SC Wisconsin

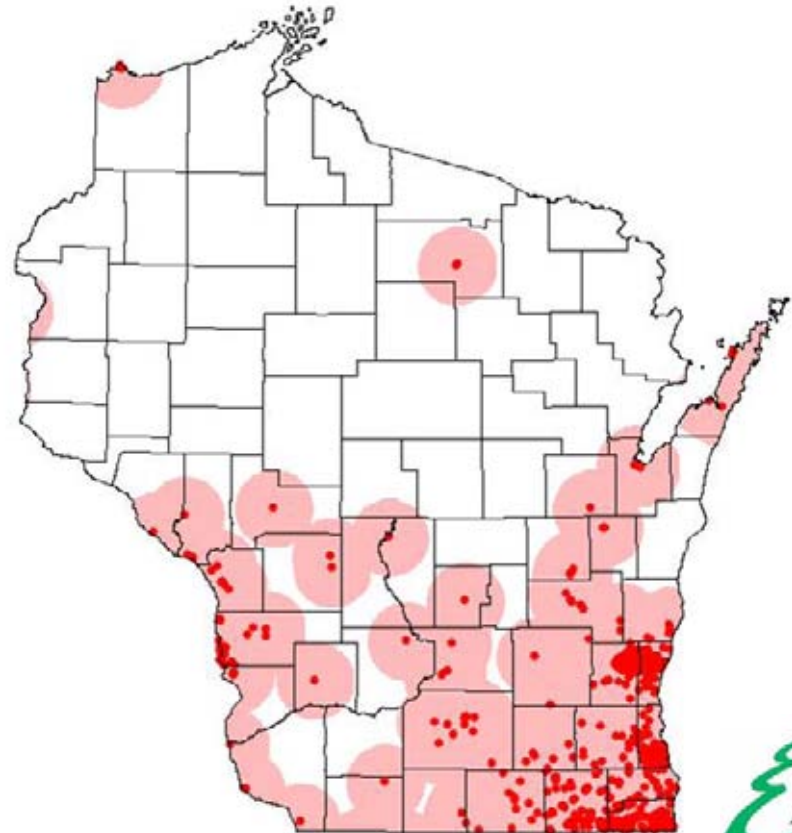
## County Distribution of Phytoplasma in WI (October 2014)

Note: Phytoplasma was confirmed in Outagamie and Polk counties in 2014



- Phytoplasma confirmed on ash and black walnut
- Phytoplasma confirmed/suspected based on visual observations on ash
- Phytoplasma confirmed on ash and butternut
- Phytoplasma confirmed on walnut

## EAB Initial Finds Plus infestation Zones





# Planned Removals At Mendota Winter 2015-16

- Remove all the Ash trees in the Campground 20 due to loss of vitality
- Remove Trees that are in decline over Playground structures 10 trees due to loss of vitality
- Future work will be done based on development of Master plan for park and health of the trees.
- Wood will be recycled when possible for park construction
- At least 20 Replacement trees will be installed once Masterplan is finalized and we know where to plant the trees



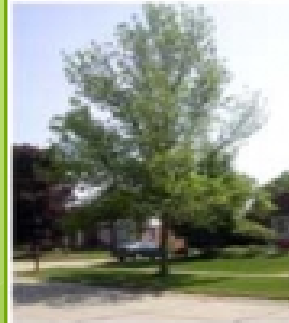
0%



10%



20%



30%



40%



50%



60%



70%



80%



90%



100%

Dane County  
Parks Forestry  
Recycling  
program turns  
infested and  
dying Ash into  
park shelters like  
this one at Stewart  
County Park



# Preliminary Planning Considerations

- ❑ Improving non-motorized accessibility to the park.
  - ❑ Nature based play.
  - ❑ Emerald Ash Borer.
  - ❑ Limnology & Storm Water Runoff
  - ❑ Potential barriers to use by diverse populations. (Twin Cities Park System Study)
  - ❑ Regional demographics. (age, race, etc.)
  - ❑ Existing park and recreation inventory.
  - ❑ Related Middleton, Westport, County plans.
  - ❑ Neighborhood, staff, stakeholder, public hopes/concerns.
- + Site Inventory & Analysis**  
**= Park Master Plan.**

# Draft Park Recommendations & Opportunities

- Improve parking and circulation of the park.
- Investigate beach restoration with breakwaters.
- Investigate youth outdoor learning opportunities.
- Health and wellness program areas.
- Relocate/replace shelter #2.
- Remove shelter #3.
- Replace shelter #1.
- Water, Restrooms, Dump Station at Campground
- Restore sea wall at lagoon.
- Incorporate art into the park.
- Improve neighborhood accessibility to the park.
- Improve picnicking opportunities.
- Improve awareness/volunteer opportunities.
- SUP/Kayak/Canoe Concessions

# Master Plan Timeline

Mendota County Park Master Planning Process

2015

2016

TASK	NOV	DEC	JAN	FEB	MAR	APR	MAY	JUN	JUL	AUG	SEP	OCT
Kick Off Meeting	█											
Project Area Inventory & Analysis	█	█										
Ongoing Public, Staff and Stakeholder Input	█	█	█	█	█	█	█	█	█			
Solicit Shoreline and Aquatic Engineering Input		█	█	█								
Solicit Health, Wellness, and Diversity Input		█	█	█								
Inventory Surrounding Park and Recreation Facilities		█	█	█								
Prepare Draft Alternative Master Plan				█	█	█						
PIM #2 to Review Draft Master Plan Alternative						█						
Consensus Building Review of Draft Master Plan by Stakeholders and Park Commission						█	█	█				
Draft Plan Revisions as Needed							█	█				
PIM #3 to Review Preferred Alternative Master Plan									█			
Stakeholder and Park Commission Review/Revisions of Preferred Alternative									█	█		
Park Commission Approval of Master Plan										█		
County Board/Committee Approval of Master Plan											█	█

# Next Steps

- Continue Inventory & Analysis
- Continue Gathering Public, Stakeholder Input/Ideas
  - Submit Comments by February 1<sup>st</sup> , 2016 to be Considered for Preliminary Draft Plan*
- April 2016 Public Information Meeting to Review Draft Master Plan

# Mendota County Park Public Input

## Please...

- Respect your Allotted Time Limit (3 Minutes)
- Do Not Interrupt or Interject Comments on Other Comments
- Do Not Laugh at Someone's Idea
- Refrain from Talking while Others are Speaking

We'll be here as long as we can afterward to answer additional questions.

# Mendota County Park Public Input

## For More Information Contact:

Chris James, Senior Landscape Architect

Dane County Parks

5201 Fen Oak Drive #221

Madison, WI 53719

608-224-3763

[james@countyofdane.com](mailto:james@countyofdane.com)

Web:

[https://www.countyofdane.com/lwrp/parks/planning.aspx#master\\_plans](https://www.countyofdane.com/lwrp/parks/planning.aspx#master_plans)