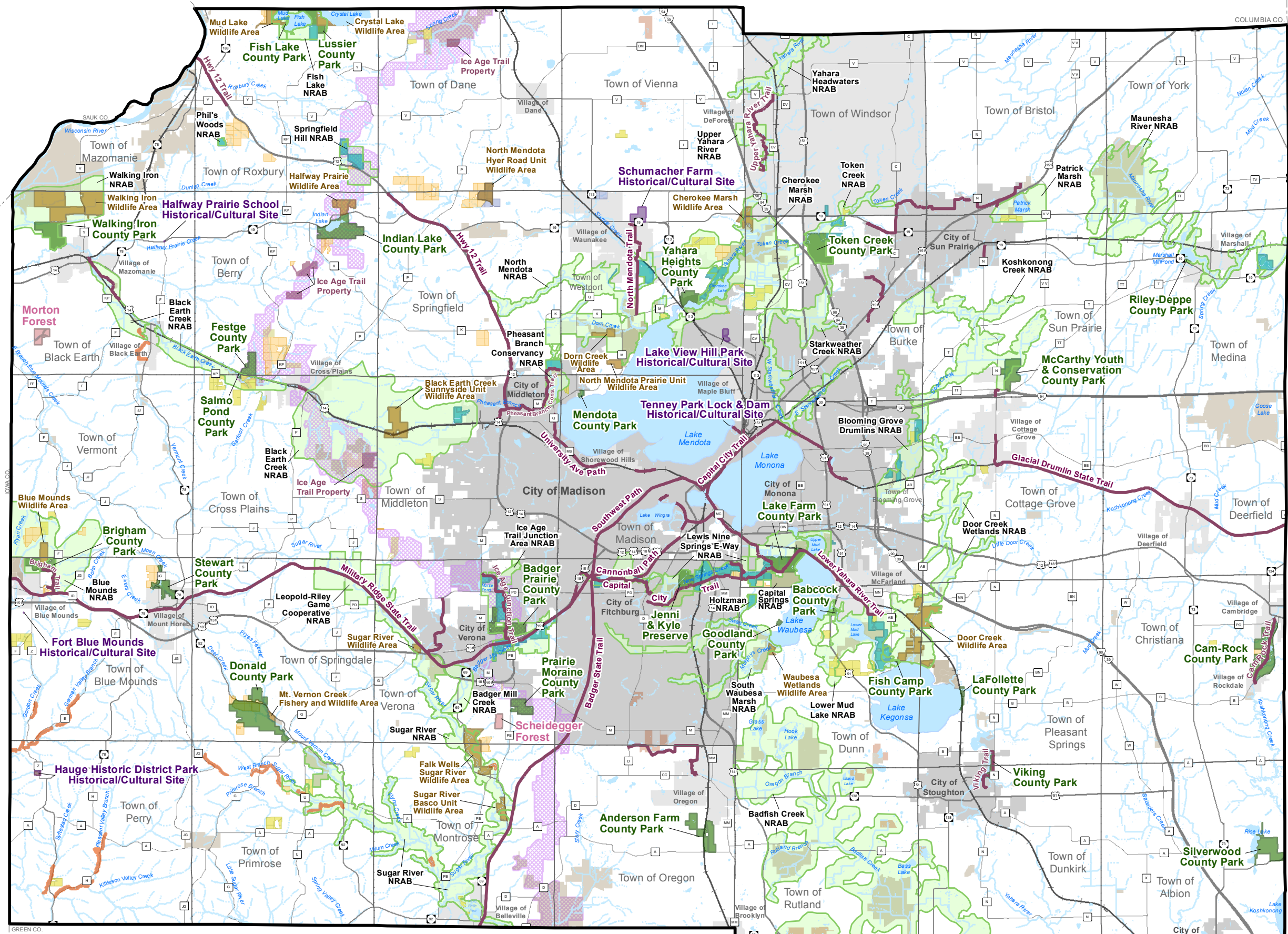


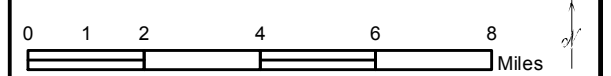
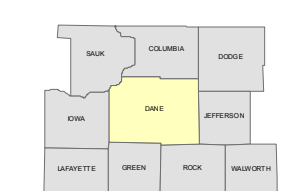
Dane County Parks & Open Space Plan 2018 - 2023



- ### Dane County Parks System
- Recreation Park
 - Natural Resource Area
 - Wildlife Area
 - Historical or Cultural Site
 - Forest
 - Trails
 - Land & Water Legacy Wetland Sites
 - Streambank Easements
 - Conservation Easements
 - Conservation Fund Grant Properties*
- ### Dane County Natural Resource Area Project Areas
- Natural Resource Area Boundary (NRAB)
 - Ice Age National Scenic Trail Corridor
- ### Reference Layers
- Existing Regional Shared-Use Trails
 - Railroad
 - Lake/Pond
 - River/Stream
 - US Fish and Wildlife Lands
 - National Park Service Lands
 - DNR Public Lands
 - Municipalities

*Conservation Fund Grant Properties are lands on easements acquired by local units of government or non-profits with assistance from the Dane County Conservation Fund Grant Program.

Map of Counties Surrounding Dane County



Data Sources:
 Recreation Parks, Forests, Historical/Cultural Sites, Wildlife Areas, Natural Resource Area Properties, Natural Resource Area Boundaries, Trails, Conservation Easements, Streambank Easements, Land & Water Legacy Wetlands, Conservation Fund Grant Properties: Dane County Parks (2017), Municipalities, Town Boundary: Dane County (2017), Hydrography: Dane County (2014), Railroads: Dane County (2014), Ice Age National Scenic Trail, Corridor and Properties: Ice Age Trail Alliance (2017), Existing Bicycle/Pedestrian Trails: Madison Area Metropolitan Planning Organization (2017), State/Federal Lands: Dane County (2017)