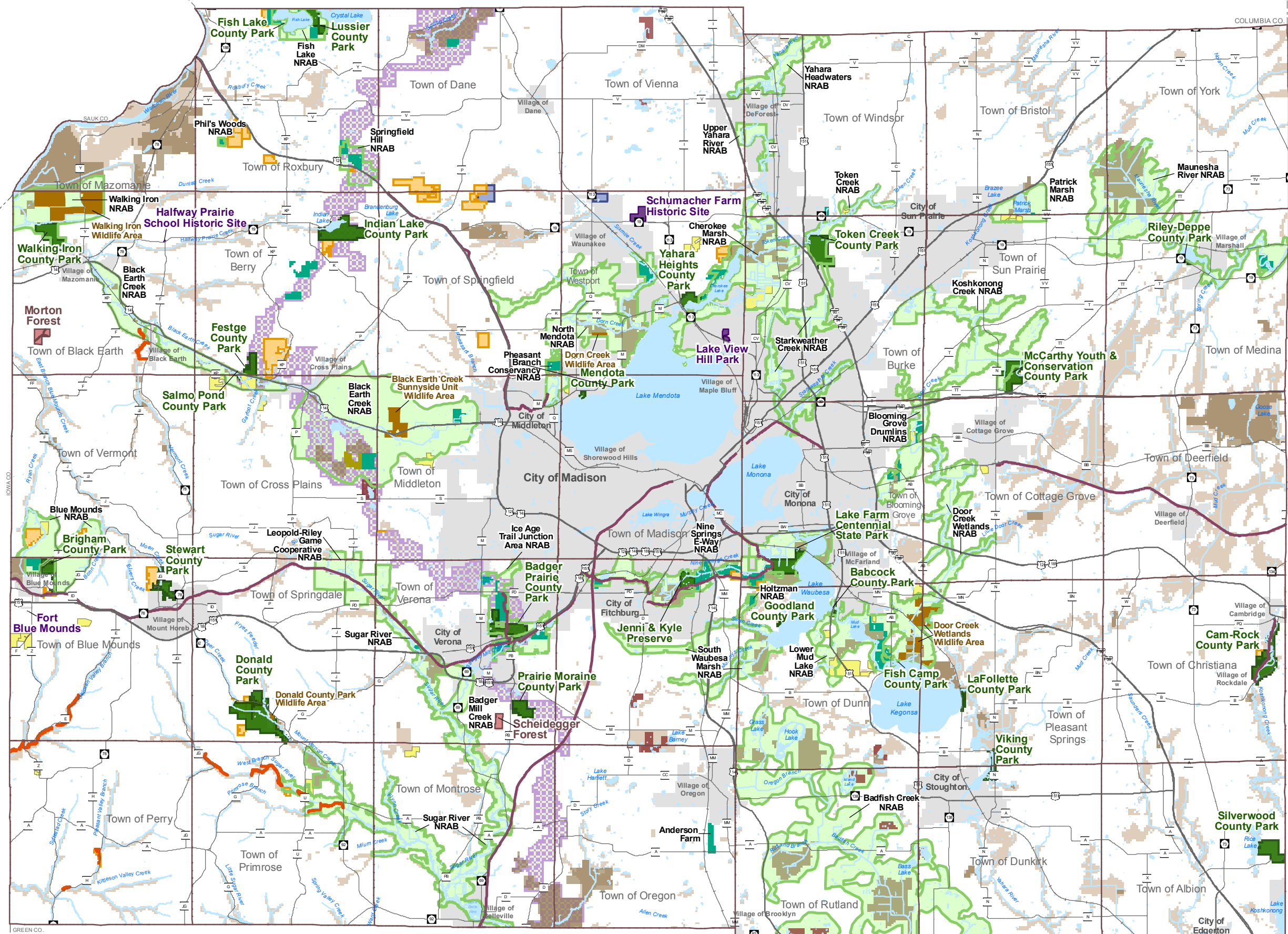


Dane County Parks & Open Space Plan 2012 - 2017

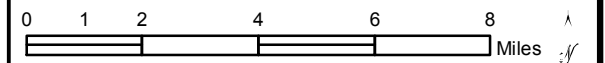
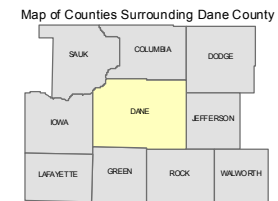


Dane County Park Commission Lands

- Recreation Park
- Forest
- Historical/Cultural Site
- Natural Resource Area Property
- Wildlife Area
- Land & Water Legacy Wetland Sites
- Conservation Easements
- Streambank Easements
- Conservation Fund Grant Properties*

Dane County Natural Resource Area Project Areas

- Natural Resource Area Boundary (NRAB)
- Ice Age National Scenic Trail Corridor



Reference Layers

- County & State Bike/Pedestrian Trails
- Railroad
- Lake/Pond
- Stream/River
- US Fish and Wildlife Lands
- National Park Service Lands
- DNR Public Lands
- Urban Service Area
- Resource Protection Corridor



*Conservation Fund Grant Properties are lands or easements acquired by local units of government or non-profits with assistance from the Dane County Conservation Fund Grant Program.

Data Sources:
 Recreation Parks, School & Community Forests, Historical/Cultural Sites, Wildlife Areas, Natural Resource Area Properties, and Natural Resource Area Boundaries: Dane County Parks Data (2011).
 Ice Age National Scenic Trail Corridor: Ice Age Park & Trail Foundation (2000).
 Existing Bicycle/Pedestrian Trails: Madison Area Metropolitan Planning Organization (2011).
 Existing Ice Age National Scenic Trail: Ice Age Park & Trail Foundation (2011).
 Proposed Off-road Bicycle/Pedestrian Trail and Ferry: Dane County Parks Data (2011).
 Water Trails: Dane County Parks Data (2006).
 State/Federal Lands: Dane County Parks (2011).
 Urban Service Area: Capital Area Regional Planning Commission (2011).
 Resource Protection Corridor: Capital Area Regional Planning Commission (2011).
 Railroad: Capital Area Regional Planning Commission (2011).
 Hydrography: Orthophoto-derived (2005).
 Town Boundary: Dane County (2011).

Map created by Dane County Parks on 9/1/2011, last updated 1/10/2012
 File Location: H:\Parks\Mapping\POSP2012-2017_POPI\Mxd\POSP2012_11x17.mxd

