








# Dane County Parks & Open Space Plan Regional Trail Map 2012 - 2017

## Existing and Proposed Trails

-  Existing Ice Age National Scenic Trail
-  Proposed Off-road Bicycle/Pedestrian Trails
-  Proposed Bicycle Pedestrian Ferry
-  Existing Off-road Bicycle/Pedestrian Trails
-  Water Trails
-  Ice Age National Scenic Trail Corridor

## Dane County Park Commission Lands

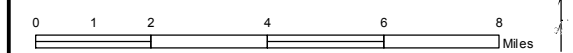
-  Recreation Park
-  Forest
-  Historical/Cultural Site
-  Natural Resource Area Property
-  Wildlife Area

## Proposed Off-Road Bicycle Pedestrian Trails

1. Token Creek Co. Park to Riley Deppe Co. Park
2. Georgia O'Keefe Trail
3. McCarthy Co. Park to Lake Kegonsa State Park
4. McCarthy Co. Park Connector Trail
5. Capital City Connector Trail
6. Blooming Grove Drumlin/Door Creek Park Trail
7. Lower Yahara River Trail
8. Kegonsa Loop (includes on-road segments)
9. Stoughton to Oregon Trail
10. Oregon to Capital Springs Trail
11. Fitchburg/Oregon Rail Trail
12. Oregon to Badger State Trail
13. Sugar River Trail
14. Sugar River to Mount Horeb Trail
15. Black Earth Creek to Pope Farm Park to Badger Prairie Co. Park
16. Good Neighbor Trail
17. Mazomanie to Sauk City Rail Trail
18. Highway 12 Connector Trail
19. Indian Lake Spur Trail
20. North Mendota Trail
21. Upper Yahara River Trail
22. DeForest to Sun Prairie Trail
23. Starkweather Creek Trail
24. Glacial Drumlin to Rockdale Trail
25. Blue Mounds Loop
26. Sherman Flyer Trail
27. CamRock Co. Park to Silverwood Co. Park to City of Edgerton

## Water Trails\*

- A. Koshkonong Creek
- B. Mauneha River
- C. Starkweather Creek
- D. Yahara Chain
- E. Badfish Creek
- F. Sugar River
- G. Black Earth Creek



\* More detailed water trail information can be found at [www.capitolwatertrails.org](http://www.capitolwatertrails.org)

Data Sources:  
 Recreation Parks, School & Community Forests,  
 Historical/Cultural Sites, Wildlife Areas, Natural Resource Area  
 Properties, and Natural Resource Area Boundaries:  
 Dane County Parks Data (2011).  
 Existing Bicycle/Pedestrian Trails: Madison Area Metropolitan  
 Planning Organization (2011).  
 Existing Ice Age National Scenic Trail: Ice Age Park & Trail Foundation (2000).  
 Dane County Parks Data (2011).  
 Proposed Off-road Bicycle/Pedestrian Trail and Ferry:  
 Dane County Parks Data (2011).  
 Water Trails: Dane County Parks Data (2006).  
 Urban Service Area: Capital Area Regional Planning  
 Commission (2011).  
 Railroad: Capital Area Regional Planning  
 Commission (2011).  
 Hydrography: Orthophoto-derived (2005).  
 Town Boundary: Dane County (2011).

Map created by Dane County Parks on 10/6/2011, last updated on 1/17/2012  
 File Location: H:\Parks\Mapping\POSP2012-2017\_POSS\Mxd\POSP2012\_11x17.mxd

