

# Silverwood County Park

## Inventory - Natural Resources

### Entire Park



**Land Statistics:**  
 Total Acreage - Approx. 300 ac  
 Woodland Acreage - Approx. 72 ac  
 Wetland Acreage - Approx. 3 ac  
 Grassland Acreage - Approx. 13.5 ac  
 Farming Acreage - Approx. 225 ac  
 Shoreline Total - Approx. 6,230 lin. ft

**Legend**

- Potential Trail Alignment
- Recently Seeded Perimeter Trail

**Steep Slopes %**

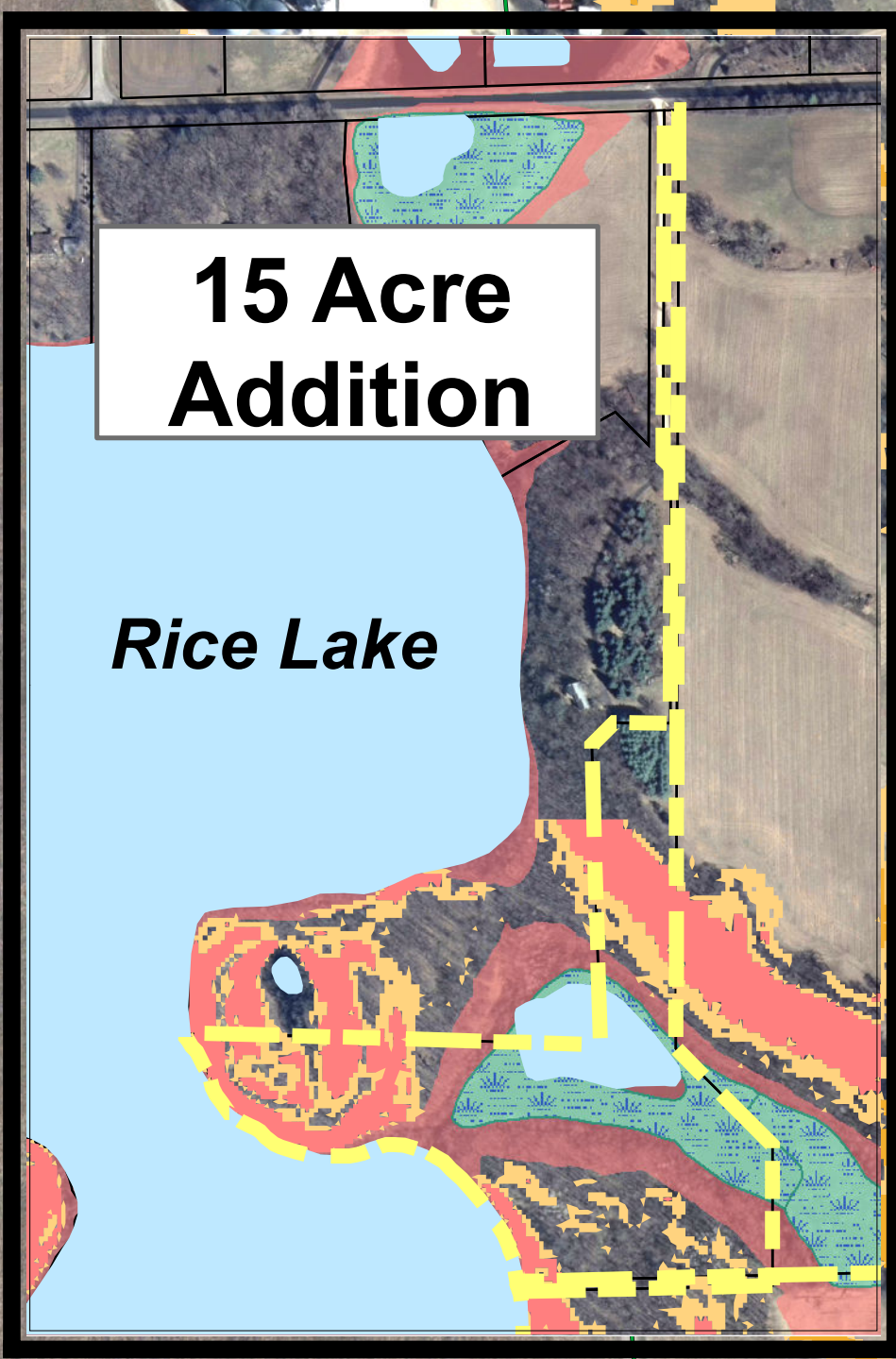
- 12 to less than 20
- 20 and greater

**Contour Lines**

- 10 foot Intervals
- 2 foot Intervals

**Legend**

- Potential View
- Depression
- Abandoned Farm Site
- 1% Annual Flood Chance
- Wetland



Rice Lake

**Silverwood County Park**  
 Approx. 300 Total Acres

Potential View

Steep 10%

Steep 10%

Steep 12%

Potential View

Potential View

Potential View

Potential View

Potential View

Potential Water Access

Depressions

Depressions

Steep 10%

Steep 10%

Steep 12%

Lowland North Woods

Large Red and Black Oak Wolf Trees

Upland Southern Wooded Area

Large Bur and White Oak Wolf Trees

Depressions

Large Bur and White Oak Wolf Trees

Abandoned Farm Site

Grassland

Abandoned Farm Site

Borrow Pit/  
Grassland

Biofuel Research Area

STH 106

