

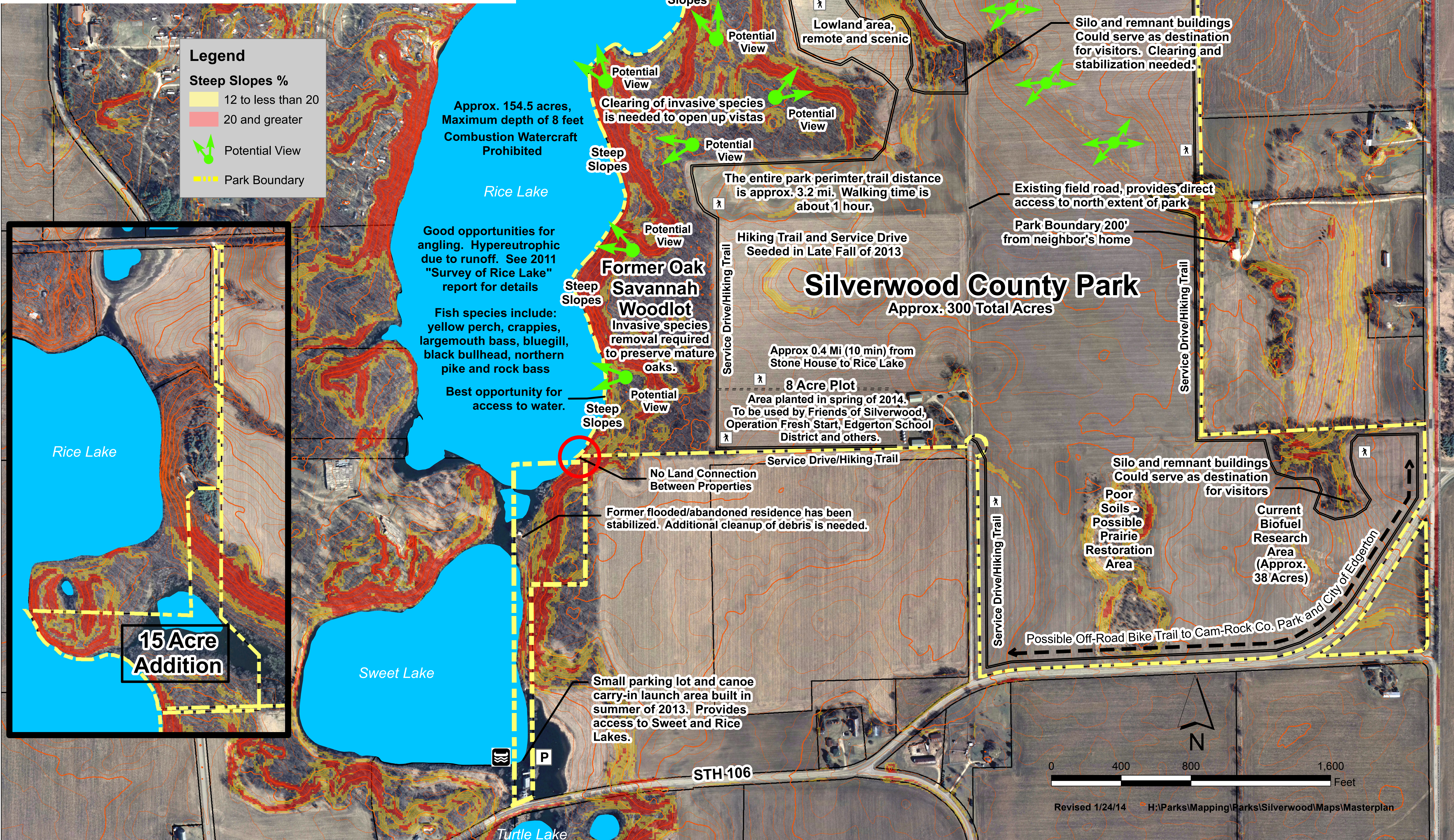
Silverwood County Park Inventory and Analysis Summary



Legend

Steep Slopes %

- 12 to less than 20
- 20 and greater
- Potential View
- Park Boundary



15 Acre Addition
(See Inset)

Steep Slopes

Lowland area,
remote and scenic

Service Drive/Hiking Trail

Silo and remnant buildings
Could serve as destination
for visitors. Clearing and
stabilization needed!

Potential View

Potential View

Approx. 154.5 acres,
Maximum depth of 8 feet
Combustion Watercraft
Prohibited

Clearing of invasive species
is needed to open up vistas

Potential View

Steep Slopes

Potential View

The entire park perimeter trail distance
is approx. 3.2 mi. Walking time is
about 1 hour.

Existing field road, provides direct
access to north extent of park

Rice Lake

Good opportunities for
angling. Hypereutrophic
due to runoff. See 2011
"Survey of Rice Lake"
report for details

Potential View

Hiking Trail and Service Drive
Seeded in Late Fall of 2013

Silverwood County Park

Approx. 300 Total Acres

Park Boundary 200'
from neighbor's home

Fish species include:
yellow perch, crappies,
largemouth bass, bluegill,
black bullhead, northern
pike and rock bass

Former Oak Savannah Woodlot
Invasive species
removal required
to preserve mature
oaks.

Approx 0.4 Mi (10 min) from
Stone House to Rice Lake

8 Acre Plot

Area planted in spring of 2014.
To be used by Friends of Silverwood,
Operation Fresh Start, Edgerton School
District and others.

Best opportunity for
access to water.

Potential View

Steep Slopes

No Land Connection
Between Properties

Former flooded/abandoned residence has been
stabilized. Additional cleanup of debris is needed.

Service Drive/Hiking Trail

Silo and remnant buildings
Could serve as destination
for visitors

Poor
Soils -
Possible
Prairie
Restoration
Area

Current
Biofuel
Research
Area
(Approx.
38 Acres)

Rice Lake

**15 Acre
Addition**

Sweet Lake

Small parking lot and canoe
carry-in launch area built in
summer of 2013. Provides
access to Sweet and Rice
Lakes.

STH-106

Possible Off-Road Bike Trail to Cam-Rock Co. Park and City of Edgerton

Turtle Lake

