



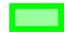


89°21'30"W 89°21'0"W 89°20'30"W 89°20'0"W 89°19'30"W 89°19'0"W 89°18'30"W 89°18'0"W



# Lake Waubesa Harvesting Priorities for Aquatic Plants

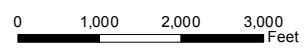
## No Cut Areas

-  Machinery Hazard
-  Undeveloped Shoreline

## Cut Areas

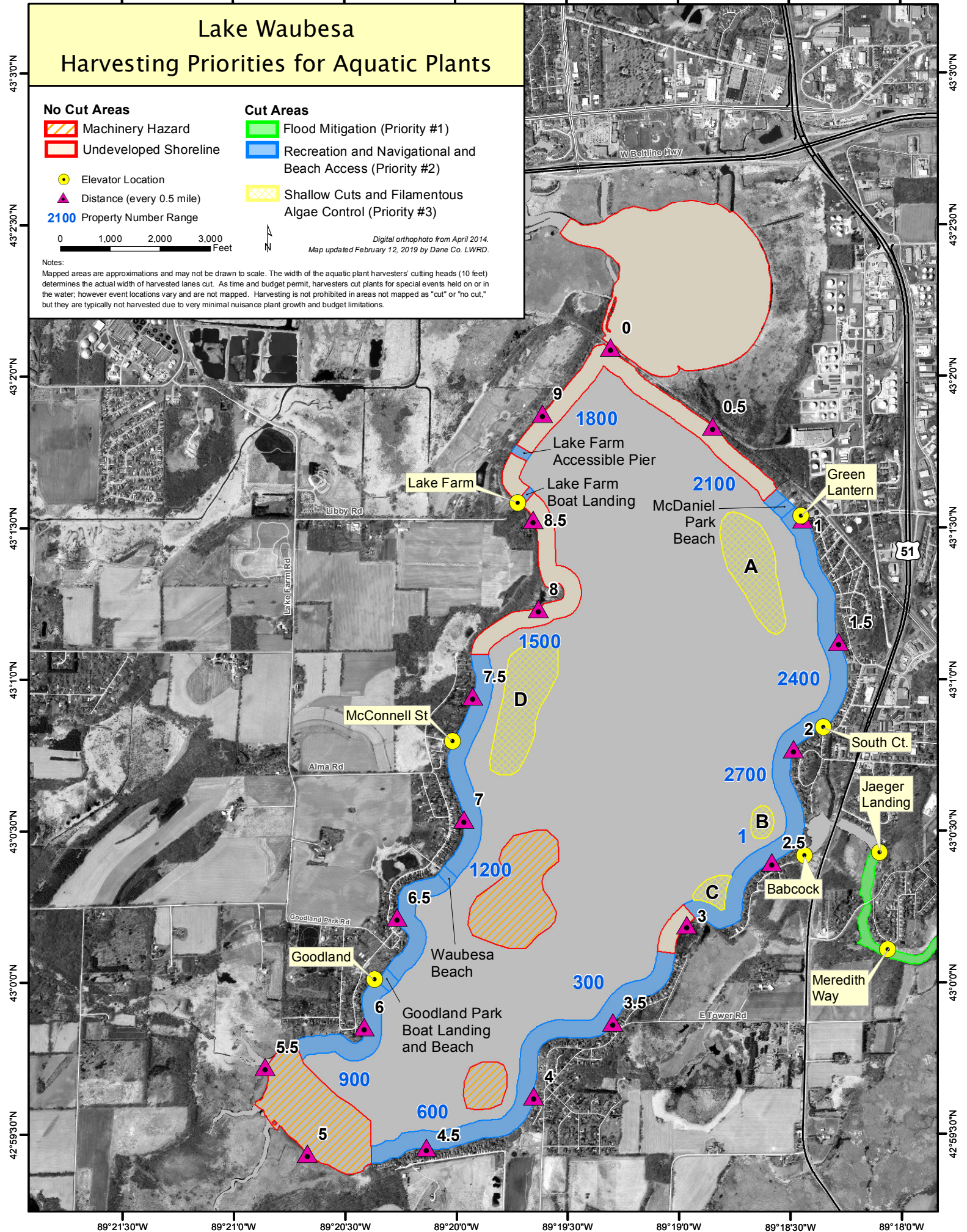
-  Flood Mitigation (Priority #1)
-  Recreation and Navigational and Beach Access (Priority #2)
-  Shallow Cuts and Filamentous Algae Control (Priority #3)

-  Elevator Location
-  Distance (every 0.5 mile)
- 2100** Property Number Range



Digital orthophoto from April 2014.  
Map updated February 12, 2019 by Dane Co. LWRD.

Notes:  
Mapped areas are approximations and may not be drawn to scale. The width of the aquatic plant harvesters' cutting heads (10 feet) determines the actual width of harvested lanes cut. As time and budget permit, harvesters cut plants for special events held on or in the water, however event locations vary and are not mapped. Harvesting is not prohibited in areas not mapped as "cut" or "no cut," but they are typically not harvested due to very minimal nuisance plant growth and budget limitations.



89°21'30"W 89°21'0"W 89°20'30"W 89°20'0"W 89°19'30"W 89°19'0"W 89°18'30"W 89°18'0"W

43°30'N  
43°23'0"N  
43°20'N  
43°13'0"N  
43°10'N  
43°0'0"N  
42°59'30"N

43°30'N  
43°23'0"N  
43°20'N  
43°13'0"N  
43°10'N  
43°0'0"N  
42°59'30"N