

Continuous Cover Program



Continuous Cover Program (CCP)

Dane County's Continuous Cover Program (CCP) provides an opportunity for landowners to convert traditional row-cropped agricultural land to perennial cool-season grass, native prairie, or grazing mixtures. In addition, land that are currently in perennial cover may be eligible in order to maintain existing cover. Landowners interested in this program work with Land & Water Resources Department staff to determine the best strategy for their unique goals and operations.

What are the benefits of this program?

- ✦ One-time, upfront rental rate payment of up to **\$150/acre/year** for a 15 year contract.
- ✦ Costs associated with establishment are cost-shared at a rate of **\$150/acre** for cool season seed mixes and **\$250/acre** for native seed mixes.
- ✦ Build soil health and promote infiltration.
- ✦ Reduce nutrient and soil runoff and sequester carbon.
- ✦ Program allows for harvesting and grazing of the cover, providing an added economic and usage benefit.

Eligibility Requirements:

Eligible cropland includes:

- History of land planted in row crops, self certified on the application and verified by staff.
- Previously restored cropland acres.

For more information, please contact:

Land Conservation Division
(608) 224-3730
landcon@countyofdane.com

Eligibility Requirements (continued):

- ✦ A minimum acreage of 0.5 acres and maximum acreage of 40 acres. This requirement may be waived by the department on a case-by-case basis. If the contracted area includes 2/3rds or more of the field, the recipient has an option to enroll the whole field.

Program Requirements

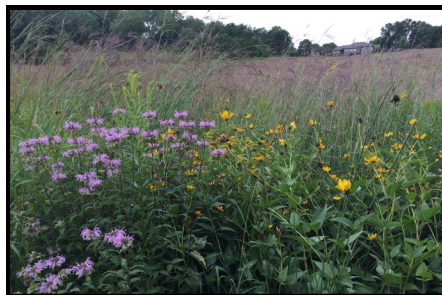
- ✦ Landowner completes and submits a department approved CCP application. Conservation cover options include perennial cool-season grass, native prairie, or grazing mixtures.
- ✦ Contracts are 15 years in length.
- ✦ Landowner shall maintain permanent cover through mowing, burning, and reseeding during the contract period in accordance with the Operation & Maintenance Plan.
- ✦ No mechanical spreading of manure or other forms of nutrients is allowed on the enrolled acres, unless written approval by department.

Application Process

- ✦ Landowner completes and submits the CCP application.
- ✦ Staff assist landowners to identify, GPS, and evaluate eligible acres. Staff will inventory acres including field checks, crop residue, and concentrated flow channels.
- ✦ Landowner and County enter into a cost-share contract.
- ✦ Landowner seeds identified acres to an approved seed mix.
- ✦ Staff field verifies seeding establishment (may include collecting invoices for seeding establishment, seed tags, etc.).
- ✦ Landowner receives a payment based upon rental rate, acres established, years of contract, and cost of vegetation establishment. The total contract payment will be made to the producer once the cover is planted and certified by staff.
- ✦ The maintenance agreement between Dane County and the landowner will be recorded on the deed for 15 years following receipt of cost share payment.



Cool-season



Native Prairie Grass Mix



Pasture Mix

Programming is contingent on available funds and county budget.