



## Erosion Control & Stormwater Management News

Greetings contractors, consultants, and municipal officials:

Our newsletter is a focused effort to inform you of regulatory and administrative changes to Dane County's erosion control and stormwater management programs.

Please take the time to familiarize yourself with this information and the permitting requirements of Chapters II and 14 of the Dane County Code of Ordinances.

Additional information and technical resources can be found on our website: [wred-lwr.d.countyofdane.com](http://wred-lwr.d.countyofdane.com)

Avoid paying double fees and receiving citations and stop work orders!

Please email or call us to verify whether a permit is required before beginning construction, grading, or other land disturbing activity. This includes putting new land in production, such as a fencerow, or cleaning out drainage ditches. We will respond in writing, for your records.

If a permit is required, it may take up to 15 working days to perform a review once submittal is made. Please take this into account when scheduling work or development.

Inquiries requiring a determination can be sent to: [wrediv@countyofdane.com](mailto:wrediv@countyofdane.com)

### What's New in 2020?

#### **COVID-19 Logistics and Plan Submittals**

During the COVID-19 public health emergency, Water Resource Engineering staff will continue to review permit submittals and revisions, and are available during normal business hours by phone or email. This is a rapidly changing situation, so monitor our [website](#) for updates.

Digital submittals can be submitted (permit fees via U.S. mail or card):

- Email to: [WREDiv@countyofdane.com](mailto:WREDiv@countyofdane.com) (< 10 MB file size)
- Upload documents to: [WRE File Transfer Site](#) (< 100 MB)

Hard copy submittals and checks:

- Through the U.S. mail: Please note, there may be a delay in processing due to the office being closed

#### **Temporary and Permanent Stabilization**

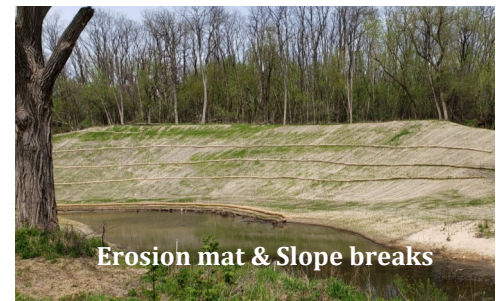
Throughout the County, we are requiring a common set of best management practices that you should be aware of.

When you design or implement a plan, please include these notes:

- Install perimeter control around stockpiles and stabilize stockpiles that will remain inactive for 7 days or longer
- Temporary stabilize disturbed areas that will remain inactive for 14 days or longer
- Stabilize areas within 7 days of reaching final grade

#### **Consultant Registry**

If you are a consultant who performs services such as plan design, site inspection, and/or licensed professional engineering services, please sign up or update your information [here](#) to be listed as an industry professional. We frequently distribute this list to the public- don't miss out on being included!



#### **Erosion Control and Stormwater Management Manual Online**

The Erosion Control and Stormwater Management Manual has been updated and is now [online](#) in an easily searchable format.

## Urban Water Quality Grants

In May 2019, two municipalities were approved to receive funding for three different projects that, once constructed, will result in the removal of an estimated: 13,000 pounds of sediment and 6 pounds of phosphorus annually.

The initial phase of the American Way Pond project, funded in 2018, was completed in May 2019. The goal of this innovative project is to demonstrate the effectiveness of treating an eight acre regional stormwater management pond with alum (aluminum sulfate) to bind excess phosphorus. The initial results have been promising with re-evaluation of water quality set for 2020.

Before:



During:



After:



## Guidance Documents

**Framed Inlet Protection** has a rigid frame construction with handles, and must extend to the back of the curb. A guidance document is available [here](#) for your reference.

**Infiltration practice** failures are all too common, but proper installation can help ensure these sensitive practices have longer lives. A guidance document is available [here](#) for your reference.

**Redevelopment** can be a confusing term, but the guidance document [here](#) has been developed to help determine how redevelopment may apply to your site.

## Chapter 49 of the Dane County Code of Ordinances

Chapter 49: Agricultural Performance Standards and Manure Management of the Dane County Code of Ordinances, addresses manure management and agricultural performance standards. Its goals are to protect human health and safety, as well as to protect surface water and groundwater resources. Chapter 49 replaces Subchapter 1 of Chapter 14 for manure management and is in effect as of July 1, 2019.

If building a new manure storage or modifying an existing storage, a permit is required prior to construction. Permits cover construction, operation and maintenance through the designed life expectancy of the storage, which is 20 years.

For existing facilities, a certificate of use is an authorization provided by the department, that allows a producer to use an unpermitted manure storage facility or a facility with an expired permit.

The certificate of use ensures the storage is being operated and maintained in accordance with the performance standards and prohibitions.

Learn more about Agricultural Performance Standards or Manure Management on the Land Conservation website:

[lcd-lwrd.countyofdane.com/Chapter-49](http://lcd-lwrd.countyofdane.com/Chapter-49)



## Water Resource Engineering Division

5201 Fen Oak Drive, Room 208

Madison, WI 53718

Phone: 608-224-3730

[WREDiv@countyofdane.com](mailto:WREDiv@countyofdane.com)

[wred-lwrd.countyofdane.com](http://wred-lwrd.countyofdane.com)