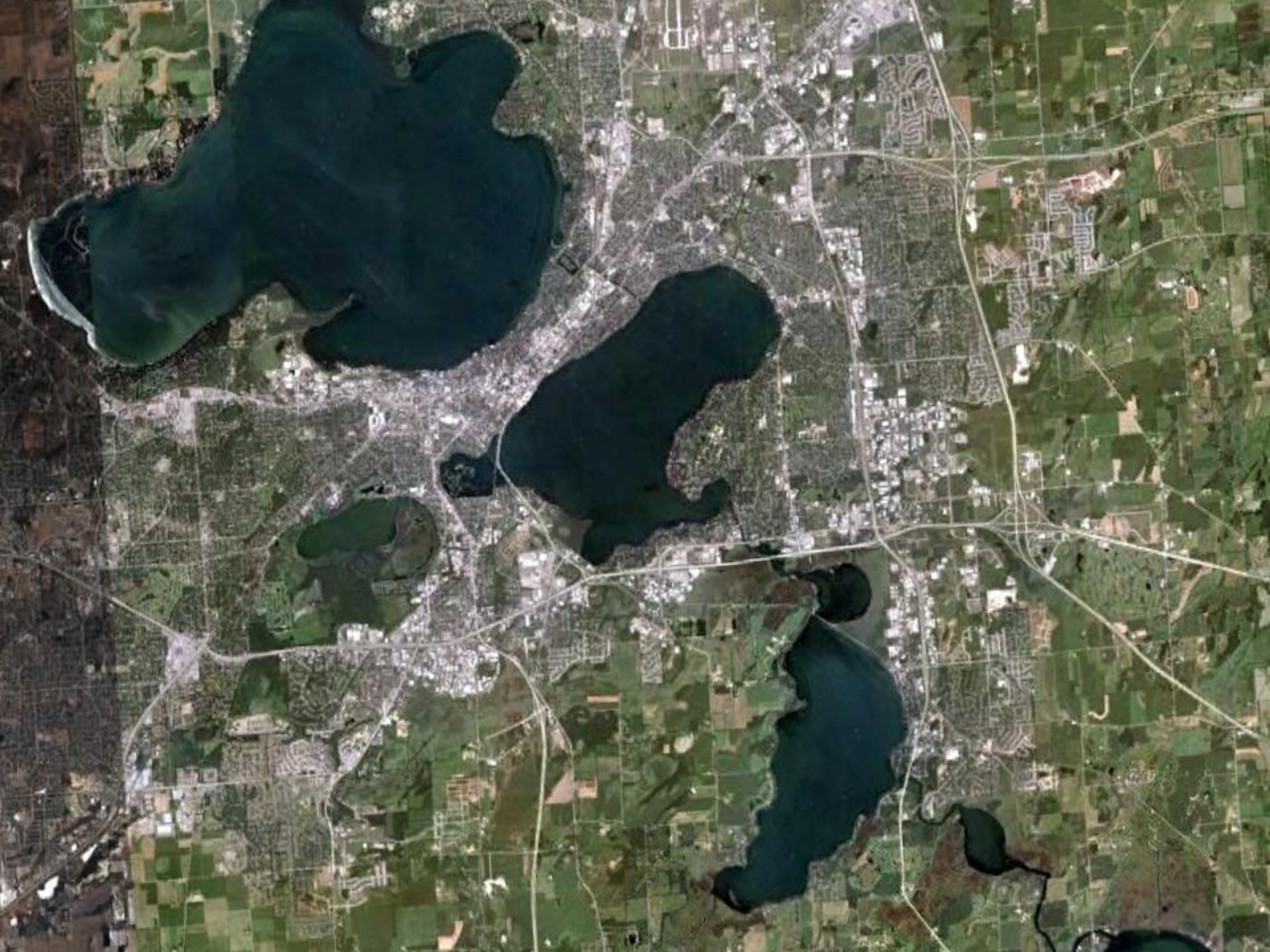


Wetlands and Wildlife in the Yahara System – Dane County

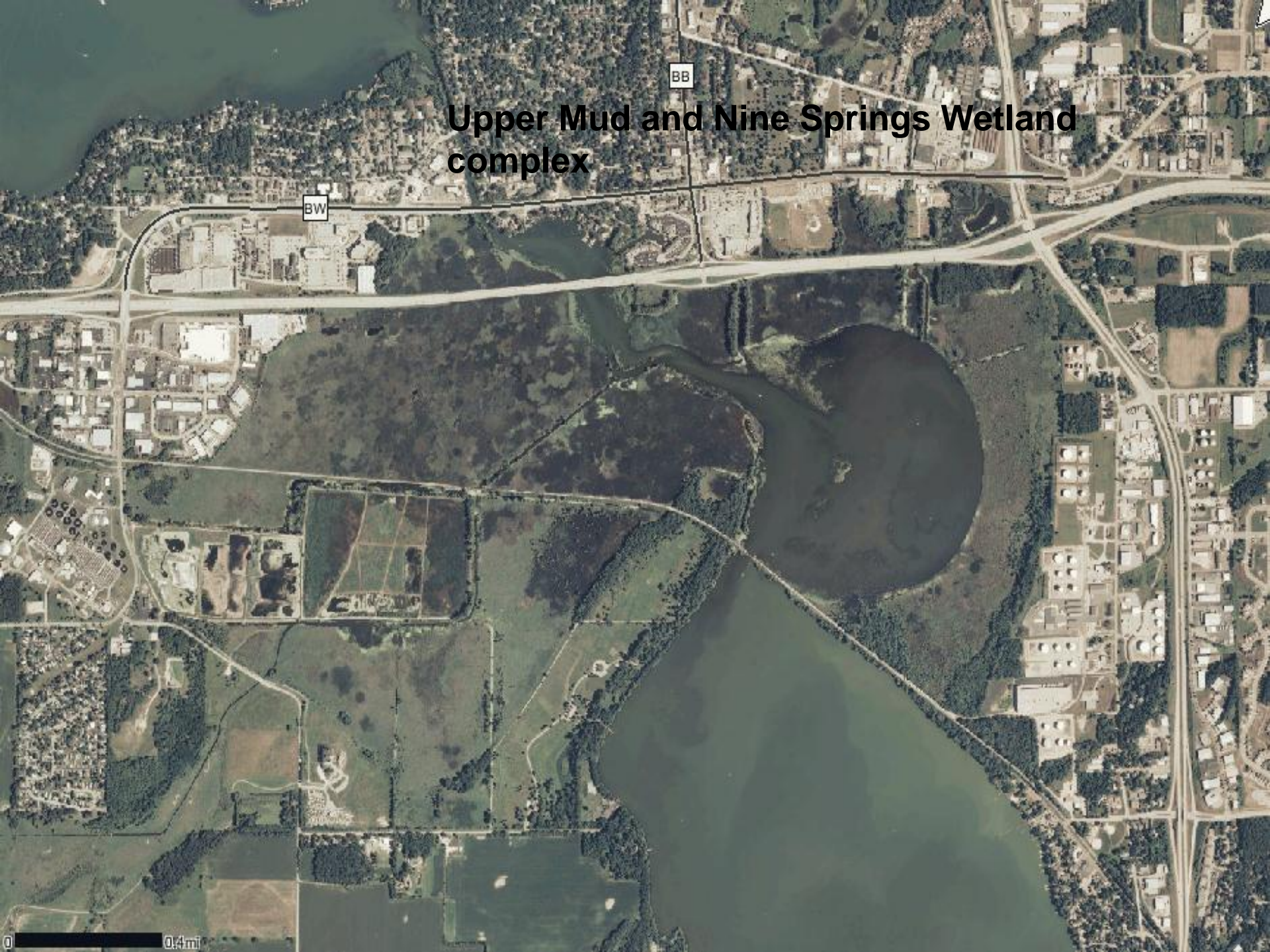




Upper Mud and Nine Springs Wetland complex

BB

BW

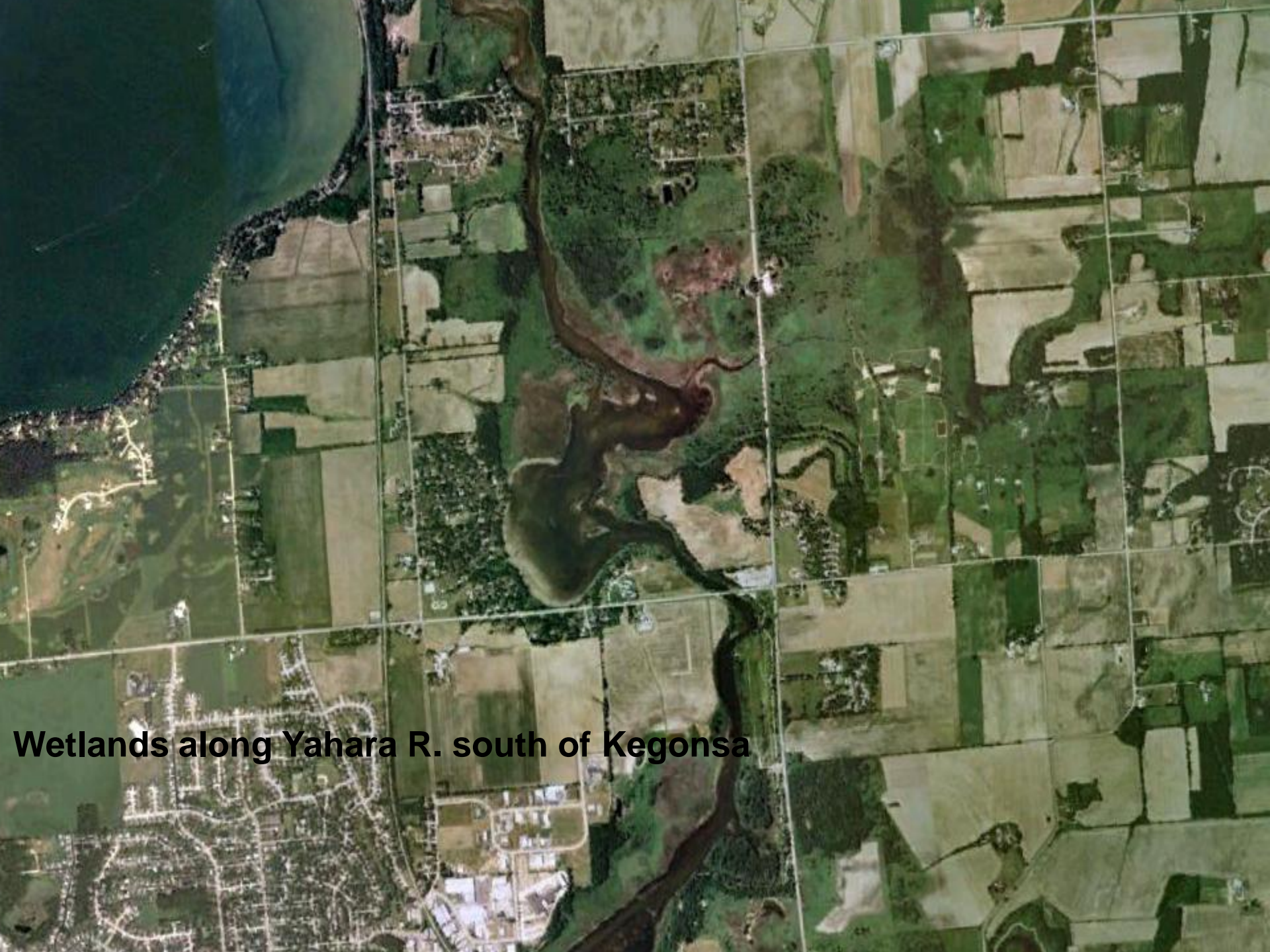


Lower Waubesa Fishery Area and State Natural Area



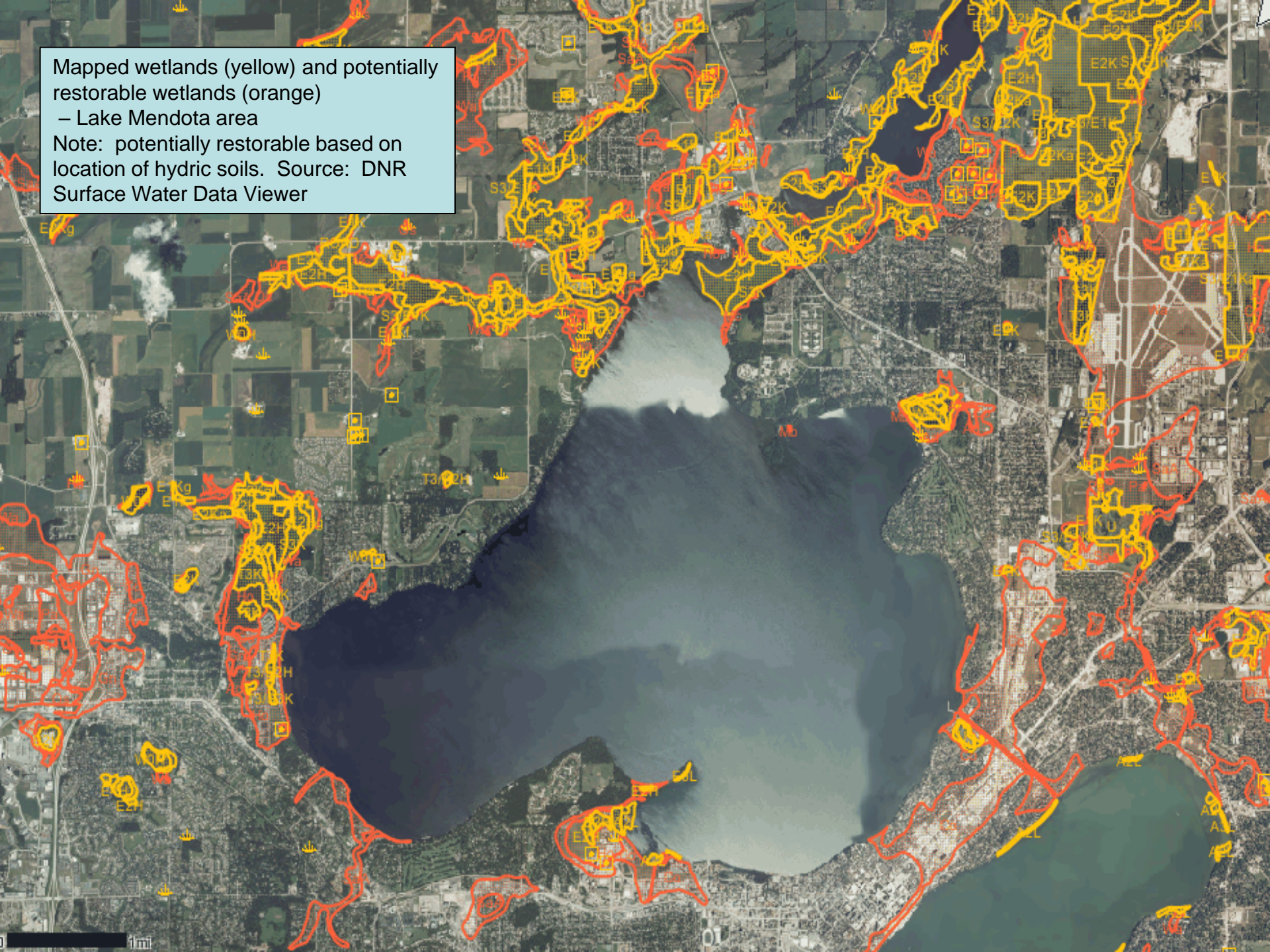
Lower Mud Lake and Yahara wetlands



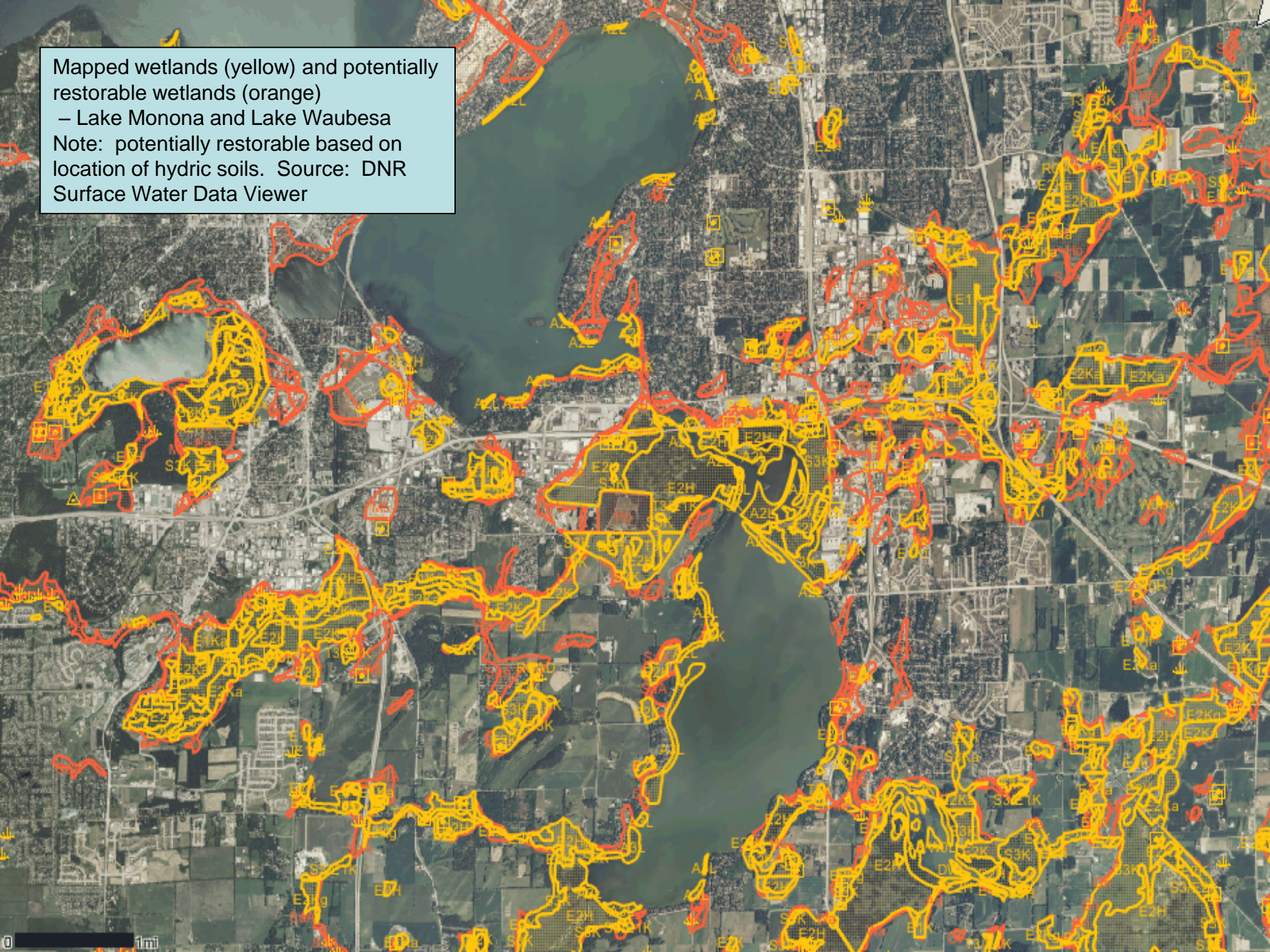


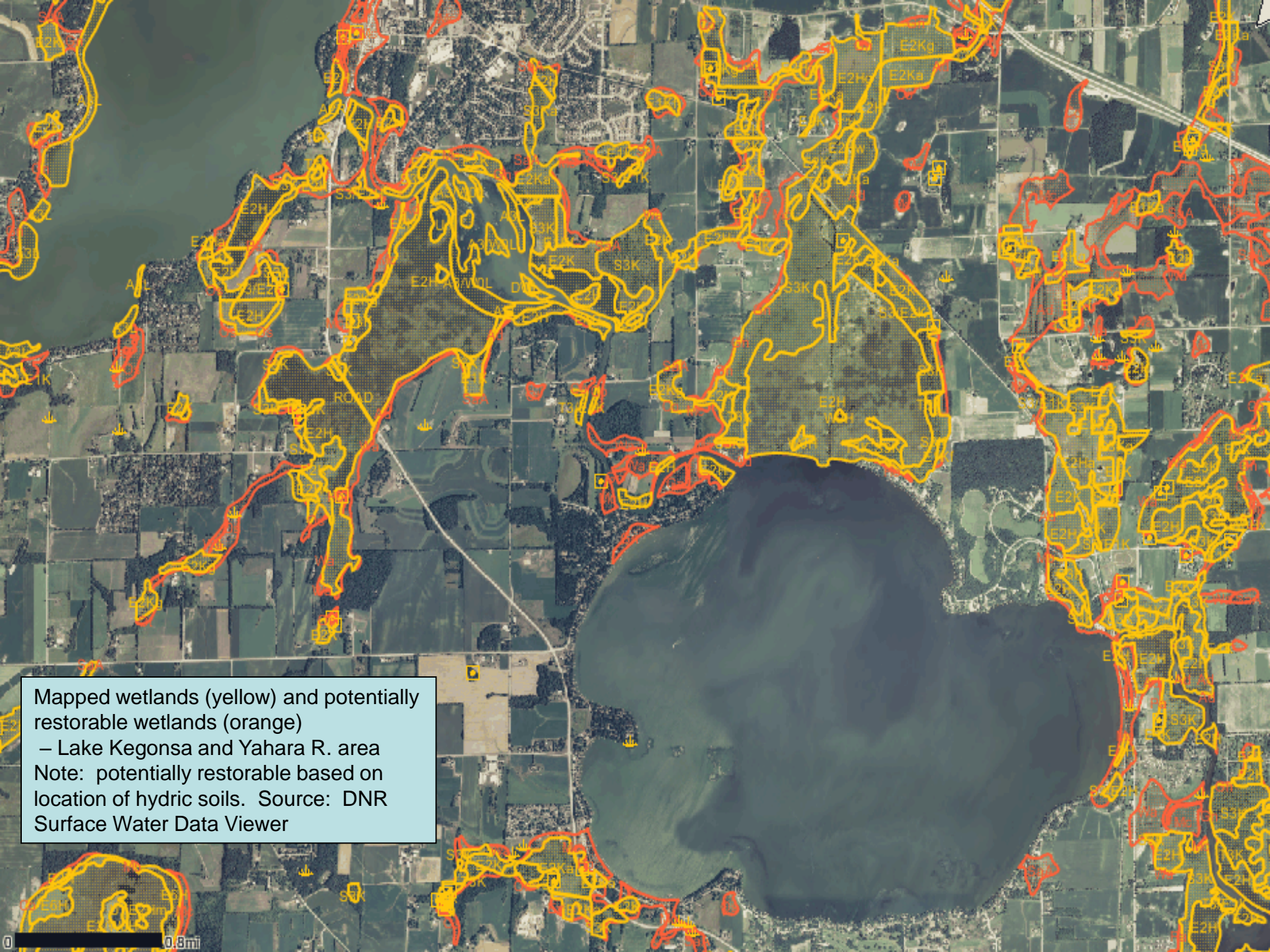
Wetlands along Yahara R. south of Kegonsa

Mapped wetlands (yellow) and potentially restorable wetlands (orange)
– Lake Mendota area
Note: potentially restorable based on location of hydric soils. Source: DNR Surface Water Data Viewer

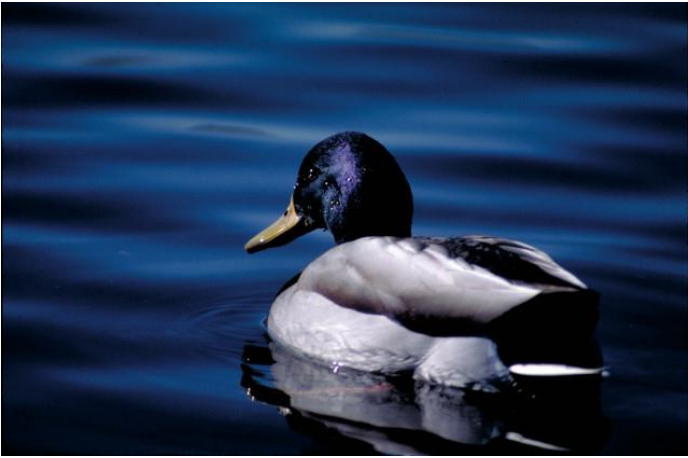


Mapped wetlands (yellow) and potentially restorable wetlands (orange)
– Lake Monona and Lake Waubesa
Note: potentially restorable based on location of hydric soils. Source: DNR Surface Water Data Viewer





Mapped wetlands (yellow) and potentially restorable wetlands (orange)
– Lake Kegonsa and Yahara R. area
Note: potentially restorable based on location of hydric soils. Source: DNR Surface Water Data Viewer



Typical Wildlife Species found in the Yahara River system

A scenic view of a pond surrounded by lush green trees and tall grasses. The water is calm and reflects the surrounding greenery. The text "Any questions?" is overlaid in the center of the image.

Any questions?