

Yahara Chain of Lakes Lake Level Task Force Updates

August 22, 2019

Current Water Levels

Lake	Date	Lake Level	Summer Min	Summer Max	100-year
Mendota	8/22/2019	850.65	849.60	850.10	852.8
Monona	8/22/2019	846.69	844.70	845.20	847.7
Waubesa	8/22/2019	846.32	844.50	845.00	847.0
Kegonsa	8/22/2019	843.66	843.00	843.50	845.2

<https://lwr.d.countyofdane.com/Lake-Levels>



Number of Days within Summer Minimum and Maximum Levels

March 1 – October 31 (244 Days)

March 1 – August 22 (174 days)

Lake	Average (2008-2018)	2019
Mendota	75	21
Monona	51	11
Waubesa	61	13
Kegonsa	87	13
Stoughton Dam		172

Slow No Wake Status

Slow-no-wake

Current Emergency Orders

7/19/2019 - Emergency Slow-no-wake orders have been issued for the following lake(s):
Squaw Bay (Entire Surface),

ⓘ Please note: Slow-no-wake will be effective sunrise July 20, 2019. Slow-no-wake will be rescinded when Lake Monona water level is at or below elevation 846.40' for 5 consecutive days.

Executive Order



Slow-no-wake Restriction Map

Green Lake = Normal Slow-no-wake Restrictions

Yellow Lake = Emergency Order: slow-no-wake within 500 feet of shore

Red Lake = Emergency Order: slow-no-wake entire surface area

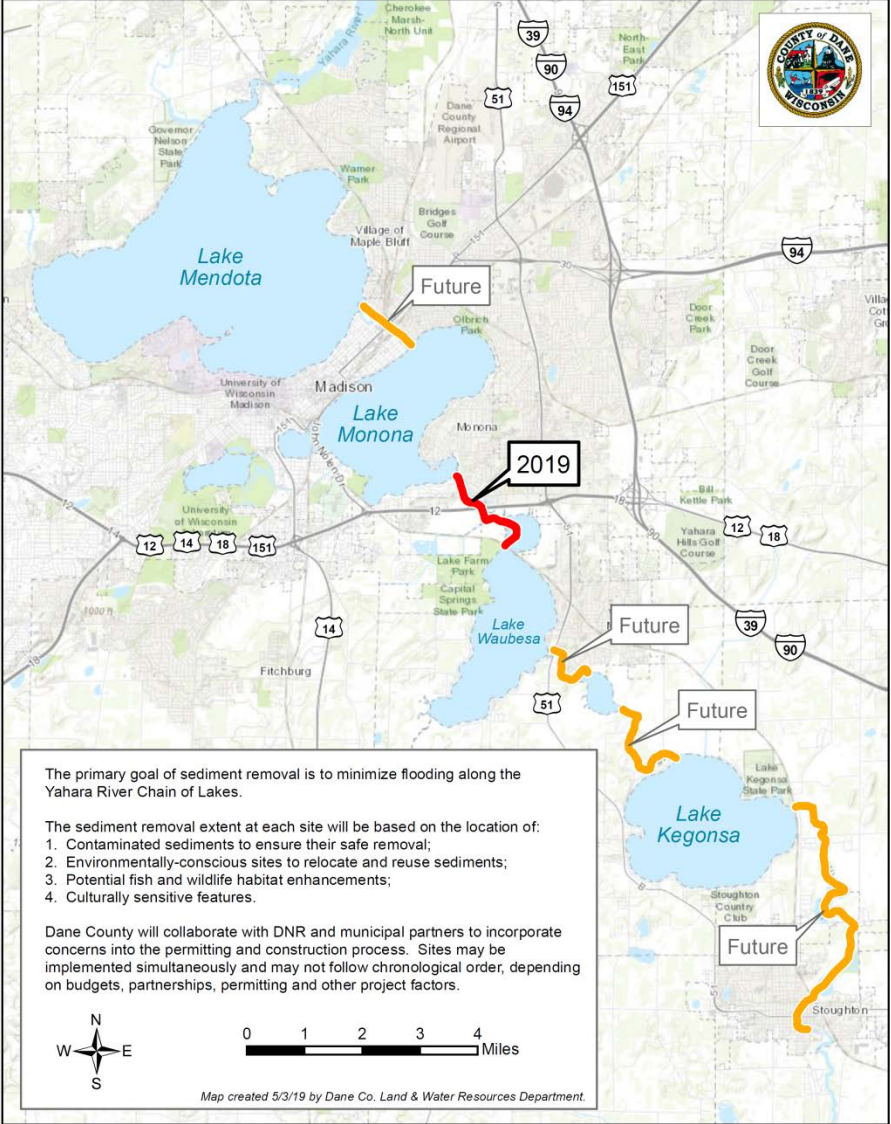
<https://lwr.d.countyofdane.com/slownowake#>

Aquatic Plant Harvesting

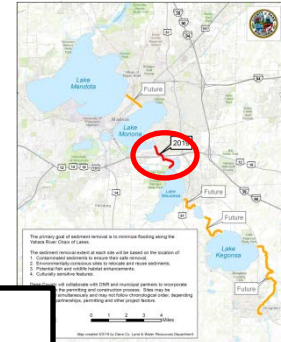
- Purchased two new aquatic plant harvesting machines



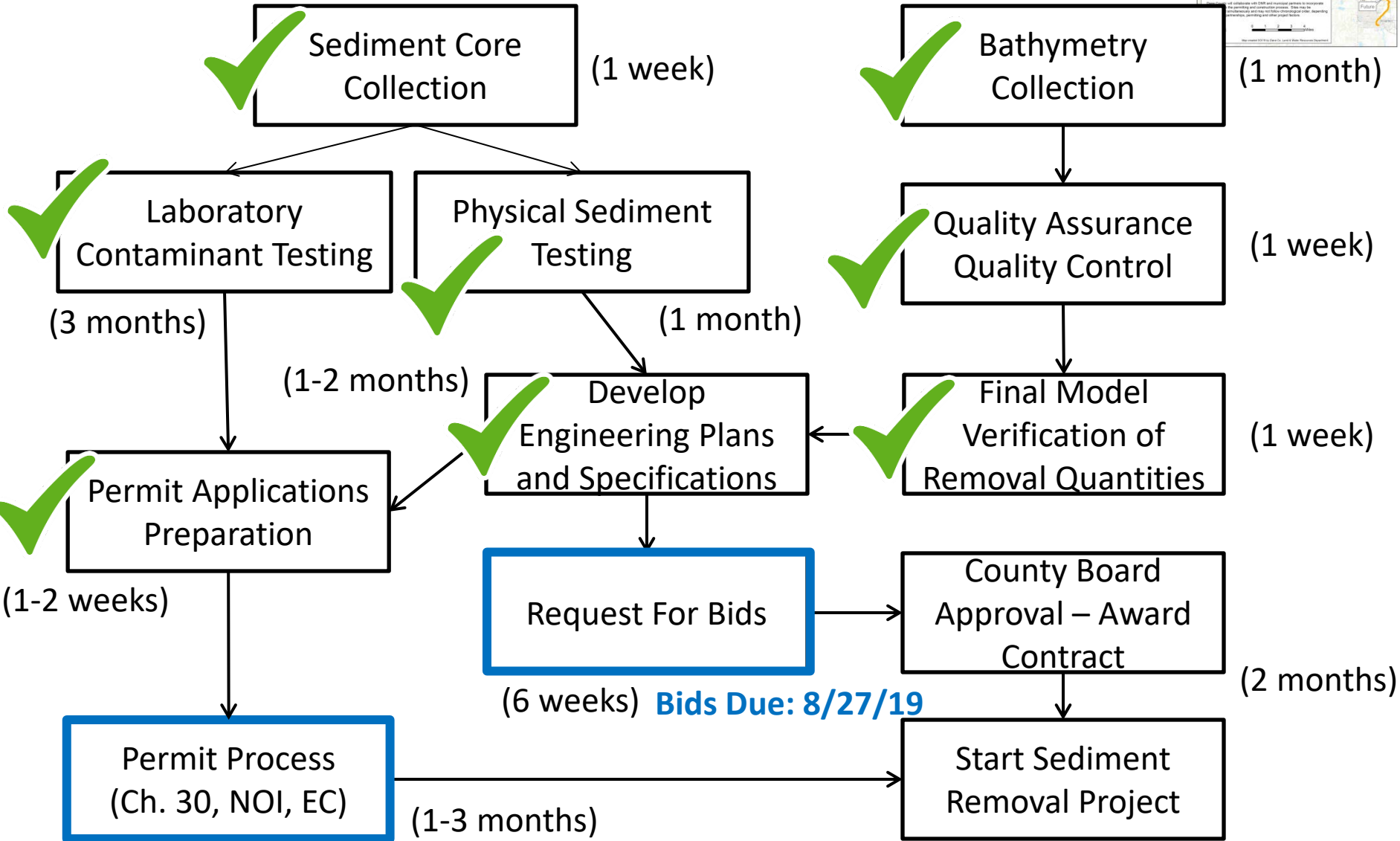
Task Force Recommendation Status: Sediment Removal



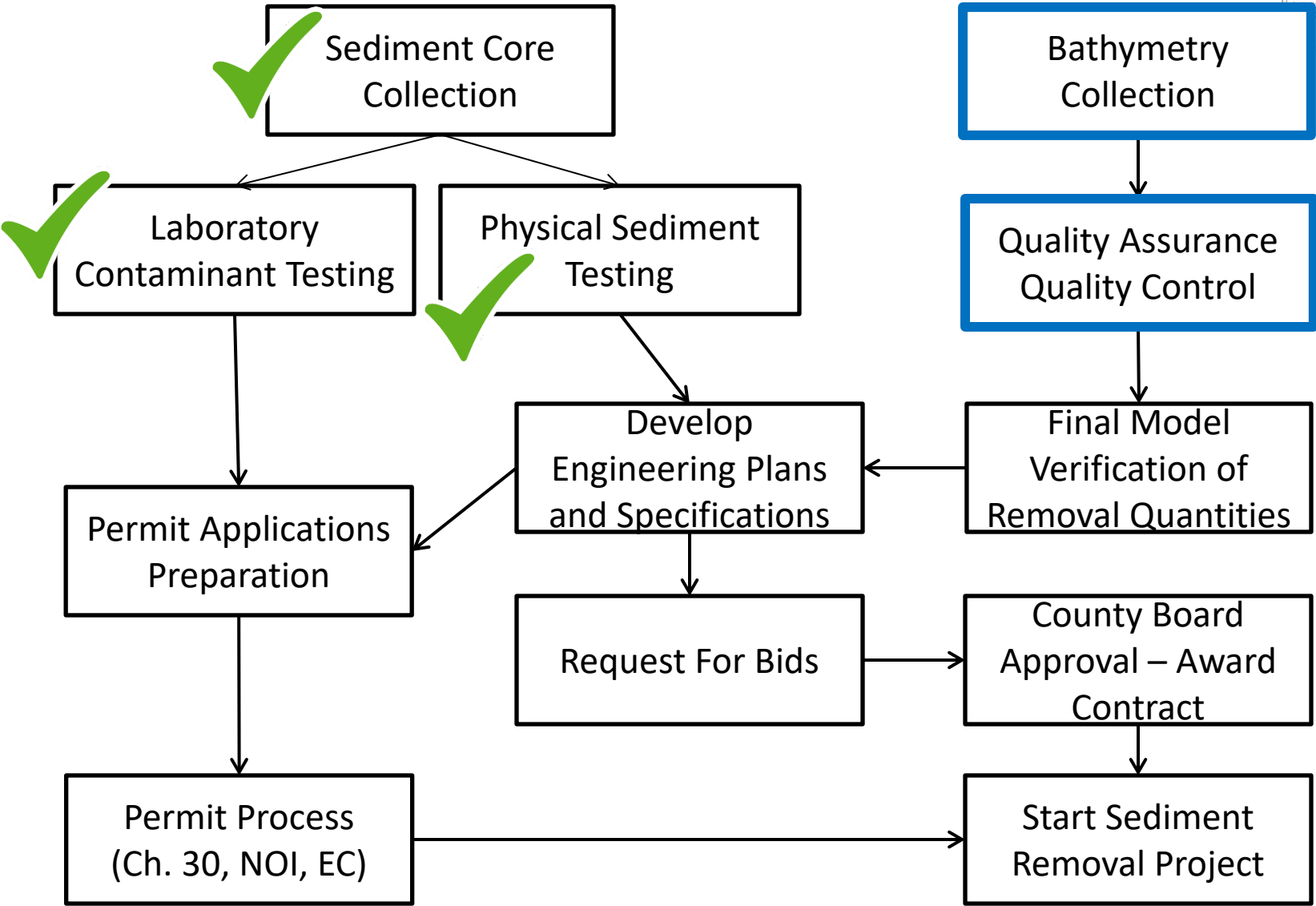
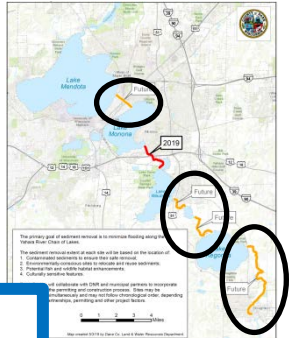
2019 Sediment Removal



(times approximate – Monona to Waubesa)



Future Sediment Removal



~220 miles